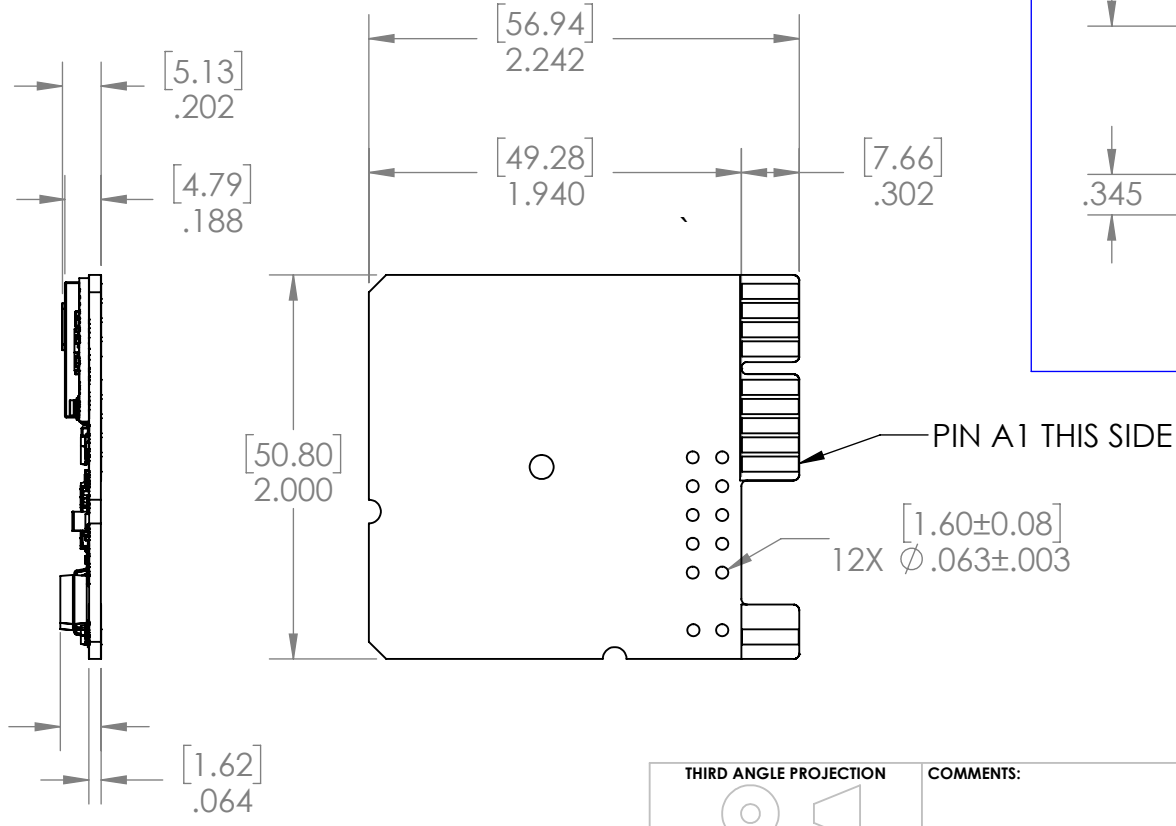
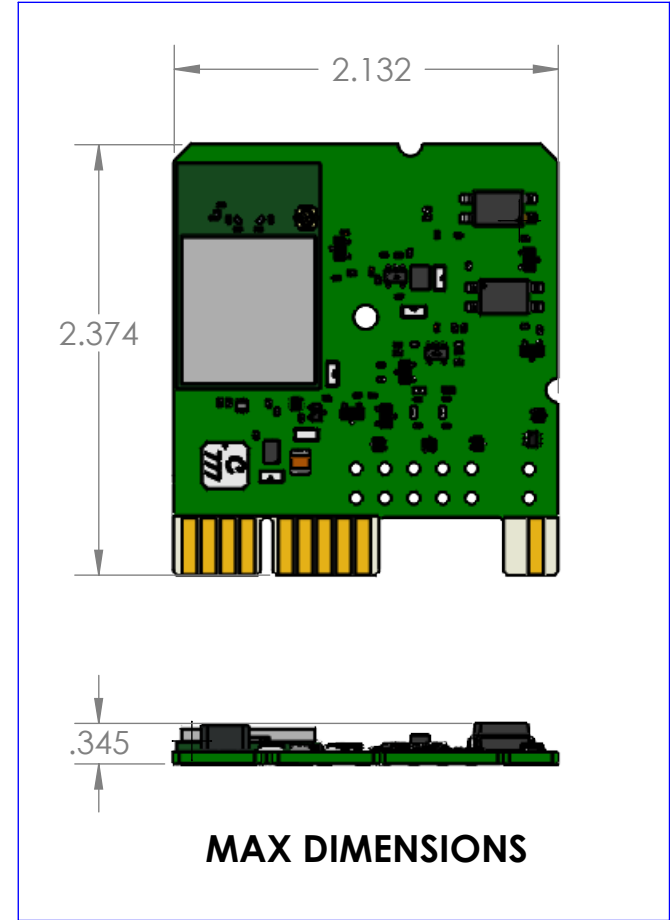
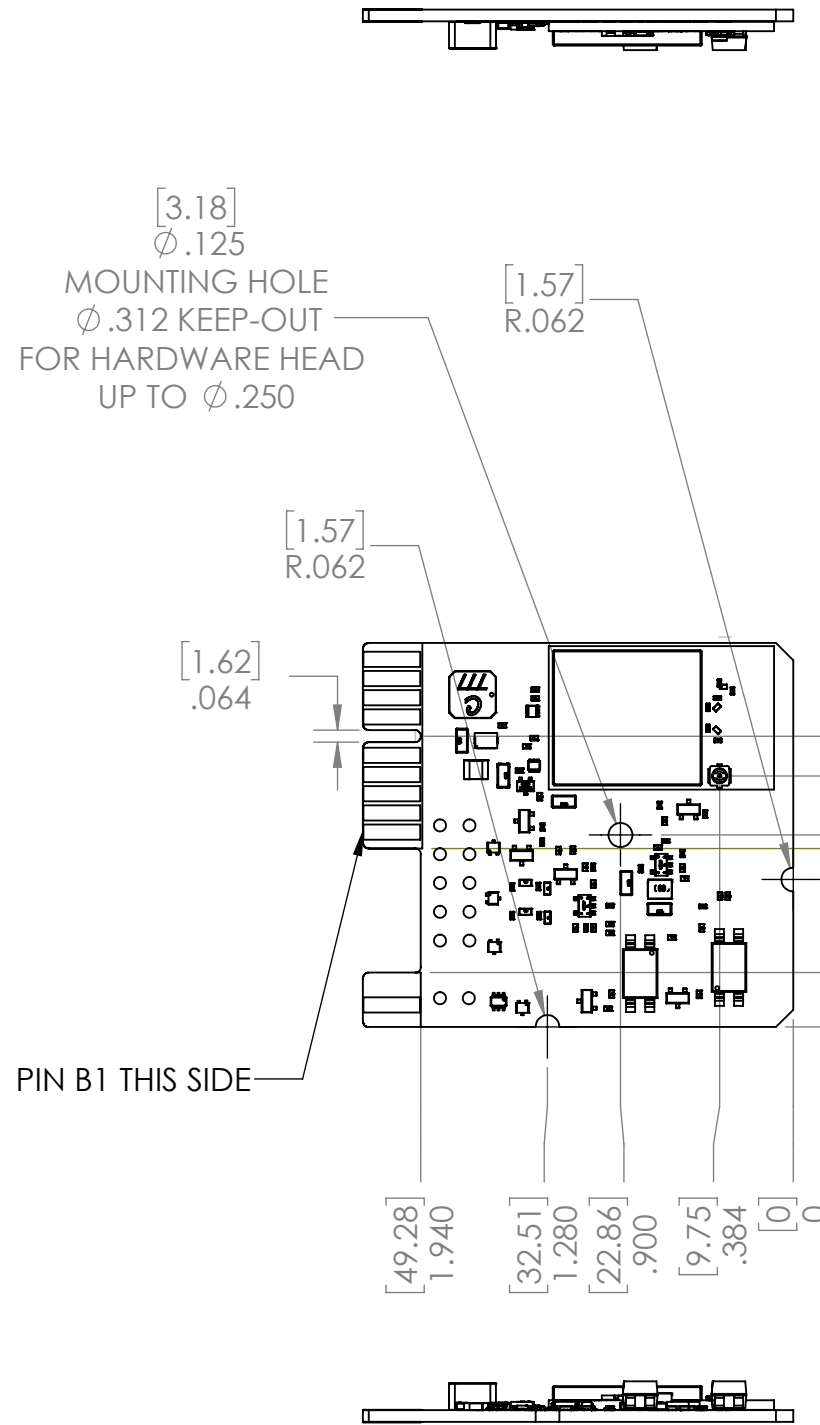


NOTES:
 1. ADD .010" TO ALL EDGES FOR CONFORMAL COATING TO DETERMINE MAX DIMENSIONS.
 2. LEAVE .050" AROUND ALL EDGES IF INSIDE AN ENCLOSURE.

REVISIONS			
REV.	CHANGE DESCRIPTION	APPROVED	DATE
A	INITIAL RELEASE	EMJ	7/12/17
B	ADD CONFORMAL COATING REQS	PF	5/11/21

D
C
B
A

D
C
B
A



THIRD ANGLE PROJECTION
 UNLESS OTHERWISE SPECIFIED:
 DIMENSIONS ARE IN INCHES [MM]
 TOLERANCES:
 ANGULAR: MACH±1° BEND ±3°
 TWO PLACE DECIMAL ±.01
 THREE PLACE DECIMAL ±.005
 PROPRIETARY AND CONFIDENTIAL
 THE INFORMATION CONTAINED
 IN THIS DRAWING IS THE SOLE
 PROPERTY OF SYNAPSE WIRELESS,
 INC. ANY REPRODUCTION IN PART
 OR AS A WHOLE WITHOUT THE
 WRITTEN PERMISSION OF SYNAPSE
 WIRELESS, INC IS PROHIBITED.

COMMENTS:
 INTERPRET GEOMETRIC
 TOLERANCING PER: ANSI
 MATERIAL
 FINISH
 DO NOT SCALE DRAWING

synapse SYNAPSE WIRELESS INC.
 6723 ODYSSEY DR HUNTSVILLE, AL 35806

TITLE: **MECHANICAL DATA SHEET, DIM10-087-06**

SIZE	DWG. NO.	REV
B	DOC-1000058	B

ENGR: EMJ SHEET 1 OF 1