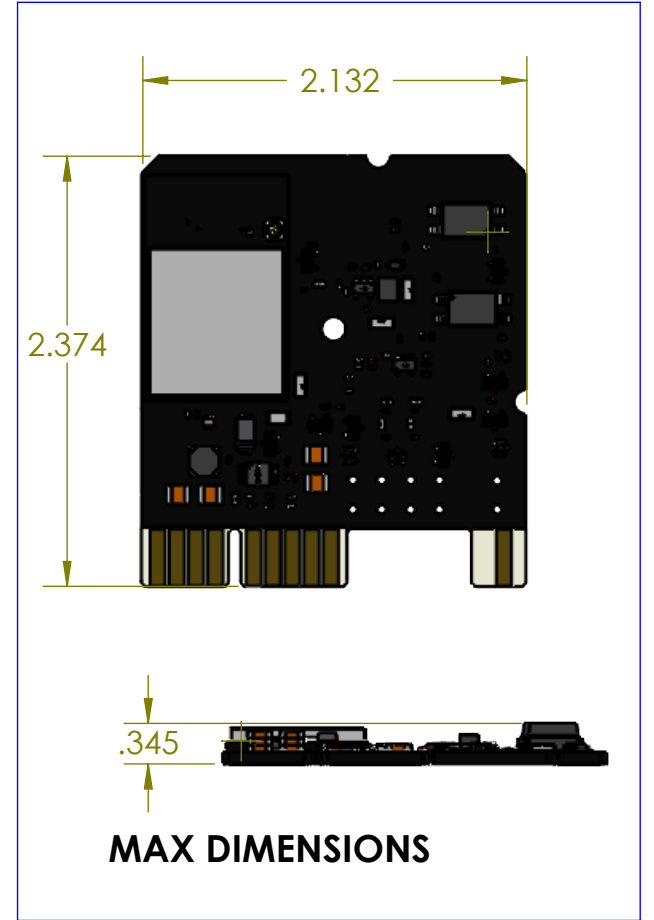
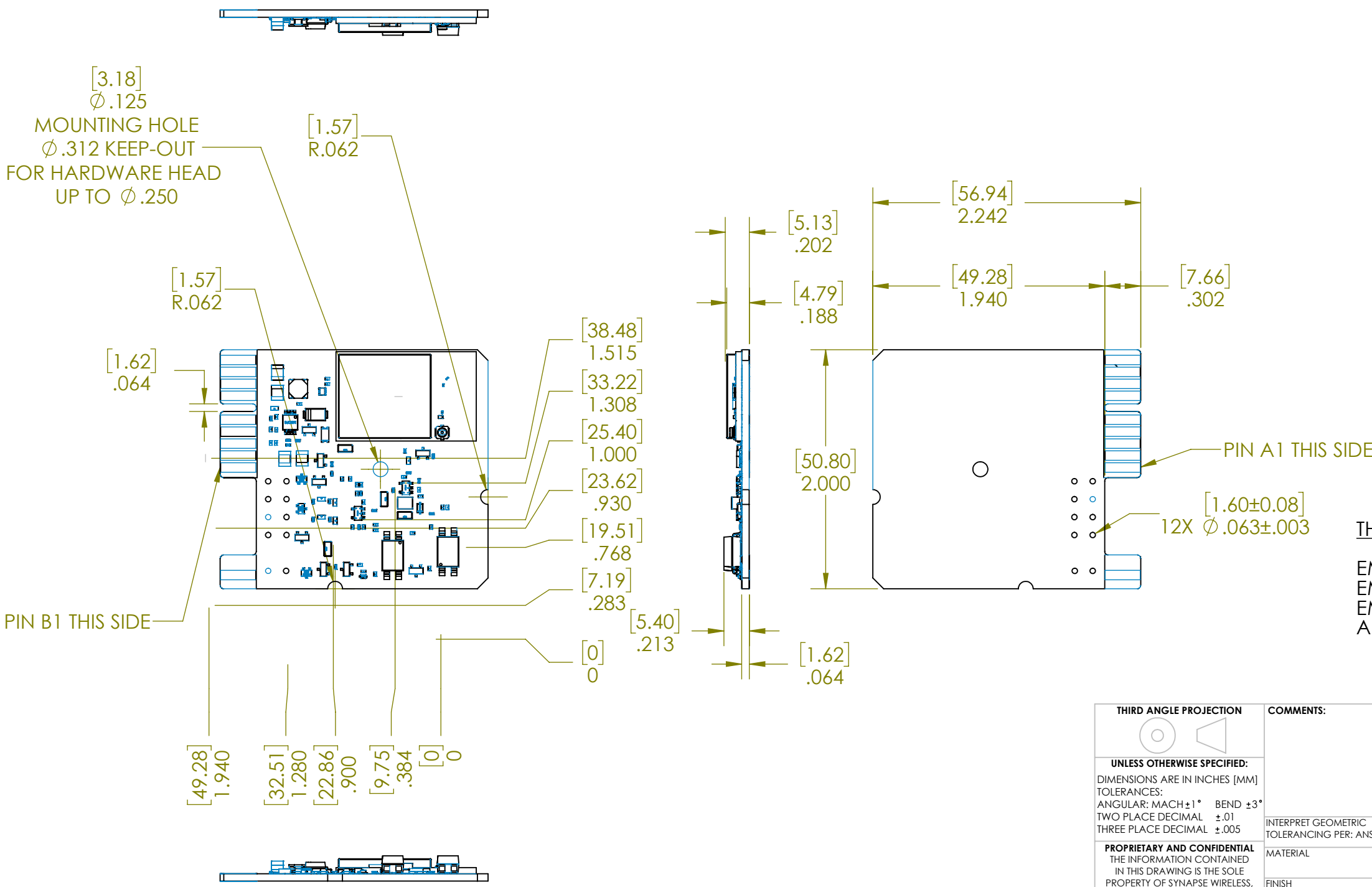


NOTES:  
 1. ADD .010" TO ALL EDGES FOR CONFORMAL COATING TO DETERMINE MAX DIMENSIONS.  
 2. LEAVE .050" AROUND ALL EDGES IF INSIDE AN ENCLOSURE.

REVISIONS			
REV.	CHANGE DESCRIPTION	APPROVED	DATE
A	INITIAL RELEASE	PF	2/16/22



THIS DRAWING IS FOR:  
 EMB-S2- BARE BOARD, EXTERNAL ANTENNA  
 EMB-S2-F - BARE BOARD, INTERNAL ANTENNA  
 EMB-S2-FW - BARE BOARD, INTERNAL ANTENNA, FLY WIRES INCLUDED

<p>THIRD ANGLE PROJECTION</p> <p>UNLESS OTHERWISE SPECIFIED:          DIMENSIONS ARE IN INCHES [MM]          TOLERANCES:          ANGULAR: MACH±1° BEND ±3°          TWO PLACE DECIMAL ±.01          THREE PLACE DECIMAL ±.005</p> <p>PROPRIETARY AND CONFIDENTIAL          THE INFORMATION CONTAINED          IN THIS DRAWING IS THE SOLE          PROPERTY OF SYNAPSE WIRELESS,          INC. ANY REPRODUCTION IN PART          OR AS A WHOLE WITHOUT THE          WRITTEN PERMISSION OF SYNAPSE          WIRELESS, INC IS PROHIBITED.</p>	<p>COMMENTS:</p>	<p>synapse SYNAPSE WIRELESS INC.          6723 ODYSSEY DR HUNTSVILLE, AL 35806</p>
	<p>DO NOT SCALE DRAWING</p>	<p>TITLE: MECHANICAL DATA SHEET, EMB-S2-XX</p>
		<p>ENGR: EMJ SHEET 1 OF 1</p>