

# FRFD

## FLOOR DOOR Fire Rated, Flush Diamond Plate

### Application

- Maintains the fire rating of a 2 hour floor ceiling assembly
- Designed for interior applications

### Product Features

- Flush aluminum diamond plate cover
- Warnock Hersey International 2 hour fire rating
- Tested to NFPA 288 ; ASTM E 119

### FRFD Floor Door Specifications:

**Material:** Aluminum door & top frame ; Stainless steel bottom frame, hinges & hardware

**Door:** 1/4" aluminum diamond plate reinforced for live load of 150 lb/per sq. ft.

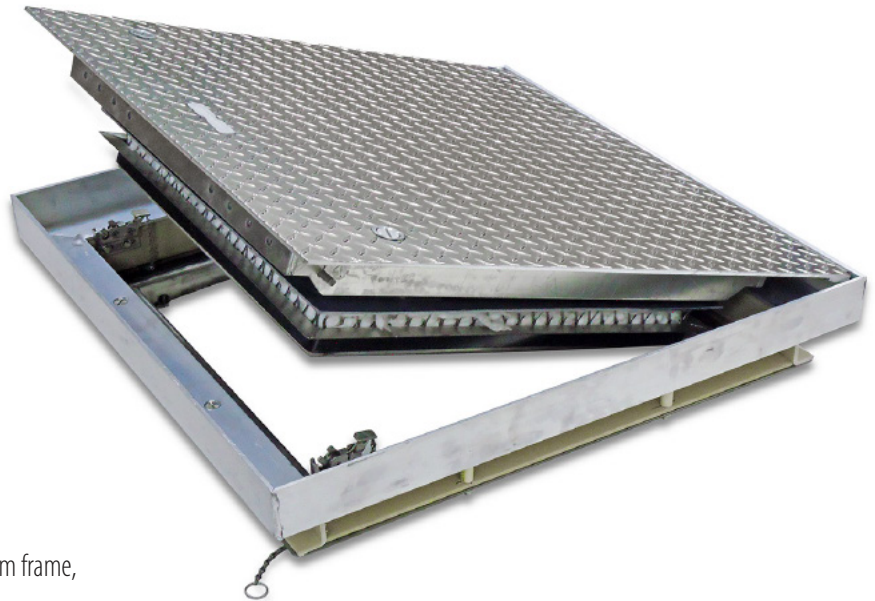
**Frame:** 3" x 3" x 1/4" aluminum top frame with thermal break 3 1/2" x 2" x 11 gauge stainless steel bottom frame

**Insulation:** Two - 1" thick layers of ceramic blanket insulation attached to bottom frame

**Hinge:** Type 316 stainless steel continuous piano hinge

**Opening Device:** Door panel opens to 90 degrees. Automatic hold open arm with red vinyl grip keeps door in open position to ensure safe egress. Stainless steel compression springs provide lift assistance. U.L. listed 165 degrees fusible link is provided for automatic closing and latching in the event of smoke or fire.

**Latch:** Stainless steel slam latch assembly with interior release



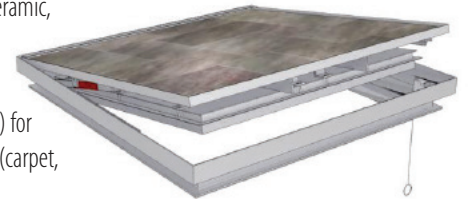
### Available options:

#### FRFD-R

Recessed 1" (25.4mm) for thicker architectural flooring (ceramic, stone, terrazzo, etc.)

#### FRFD-R18

Recessed 1/8" (3.16mm) for thin composite flooring (carpet, vinyl, rubber, etc.)



### FRFD STANDARD SIZES

(other sizes available upon request)

Nominal Door Size W&H		Weight per Door	
inches	mm	lbs.	kg.
24 x 24	610 x 610	115	52
24 x 36	610 x 914	142	64
24 x 48	610 x 1219	175	79
30 x 30	762 x 762	155	70
30 x 36	762 x 914	175	79
36 x 36	914 x 914	195	88
36 x 48	914 x 1219	250	113
42 x 42	1067 x 1067	255	116
48 x 48	1219 x 1219	280	127

For detailed specifications see submittal sheet

