



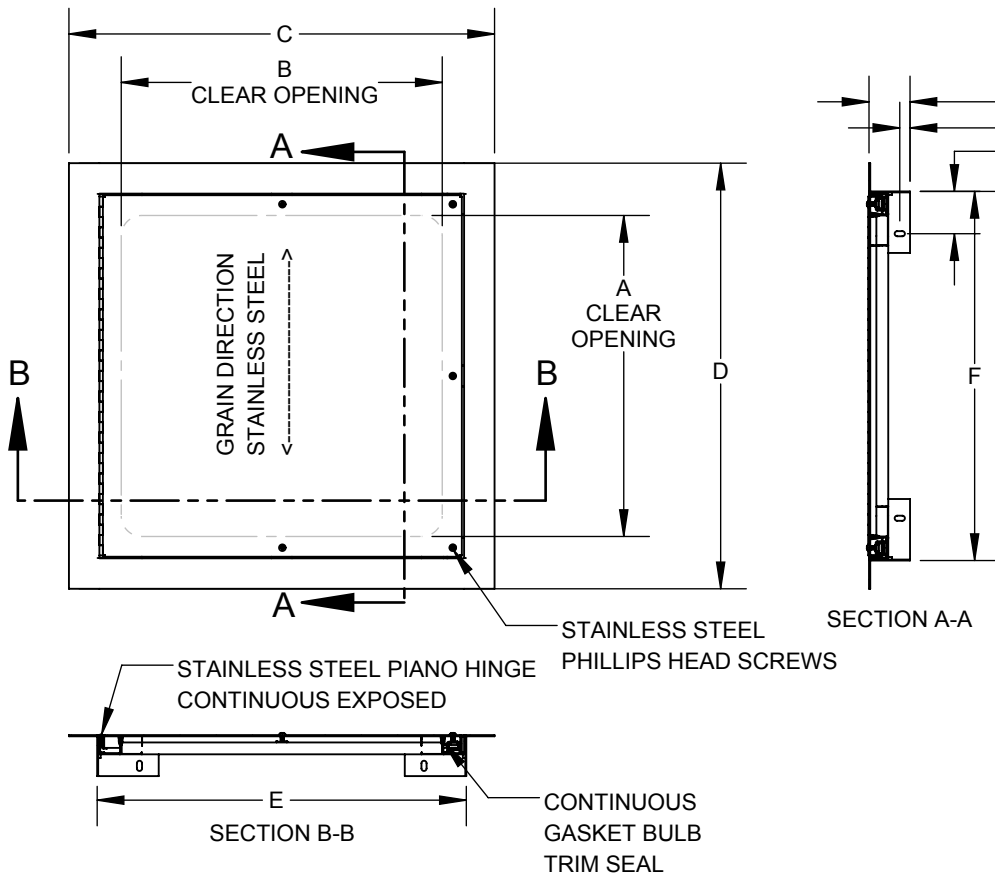
**ACUDOR**

www.acudor.com  
 U.S.A.: info@acudor.com / 800.722.0501  
 CANADA: info@acudor.ca / 844.228.3671  
 INTERNATIONAL: info@acudorintl.com  
 (905) 428.2240

**ADWT**

**AIRTIGHT / WATERTIGHT**

QTY	NOMINAL SIZE	A	B	C	D	E	F	SCREWS
	8 x 8 (203 x 203)	5.65 (144)	5.65 (144)	10.75 (273)	10.75 (273)	8.00 (203)	8.00 (203)	2
	12 x 12 (305 x 305)	9.65 (245)	9.65 (245)	14.75 (375)	14.75 (375)	12.00 (305)	12.00 (305)	2
	14 x 14 (355 x 355)	11.65 (296)	11.65 (296)	16.75 (425)	16.75 (425)	14.00 (355)	14.00 (355)	2
	16 x 16 (406 x 406)	13.65 (347)	13.65 (347)	18.75 (476)	18.75 (476)	16.00 (406)	16.00 (406)	2
	18 x 18 (457 x 457)	15.65 (397)	15.65 (397)	20.75 (527)	20.75 (527)	18.00 (457)	18.00 (457)	2
	24 x 24 (610 x 610)	21.65 (550)	21.65 (550)	26.75 (679)	26.75 (679)	24.00 (610)	24.00 (610)	2
	24 x 36 (610 x 914)	33.65 (855)	21.65 (550)	26.75 (679)	38.75 (984)	24.00 (610)	36.00 (914)	3
	30 x 30 (762 x 762)	27.65 (702)	27.65 (702)	32.75 (832)	32.75 (832)	30.00 (762)	30.00 (762)	5
	36 x 36 (914 x 914)	33.65 (855)	33.65 (855)	38.75 (984)	38.75 (984)	36.00 (914)	36.00 (914)	5
	30 x 48 (762 x 1219)	45.65 (1159)	27.65 (702)	32.75 (832)	50.75 (1289)	30.00 (762)	48.00 (1219)	5



**ASTM E283/E283M-19:** "Standard Test Method for Determining Rate of Air Leakage Through Exterior Windows, Curtain Walls, and Doors Under Specified Pressure Differences Across the Specimen", for Air Infiltration & Exfiltration at 300Pa (6.27 psf) with result of maximum leakage  $\leq 0.1$  L/s/m<sup>2</sup> (0.01 cfm/ft<sup>2</sup>)

**ASTM E331-00(2016):** "Standard Test Method for Water Penetration of Exterior Windows, Skylights, Doors, and Curtain Walls by Uniform Static Air Pressure Difference", for Water Penetration resistance at 720Pa (15.04 psf) with result of no leakage.

**STANDARD FEATURES:**

- FRAME FULLY WELDED TO PREVENT LEAKAGE
- CONTINUOUS GASKET BULB TRIM SEAL
- STAINLESS STEEL PHILLIPS HEAD SCREWS

**THIS DOOR HAS BEEN TESTED FOR:**

- AIR FILTRATION: LESS THAN 0.01 CFM/SQ FOOT: ASTM E 283**
- WATER RESISTANCE: NO LEAKAGE AT 15.05 PSF: ASTM E 331**

**OPTIONS:**

LOCK

- CYLINDER LOCK AND KEY

**SCREW TYPE**

- ALLEN HEAD SCREW
- SPANNER HEAD SCREW
- OTHER

**MATERIAL**

- STAINLESS STEEL
- OTHER

**FINISH**

- PRIME COAT WHITE
- #4 SATIN POLISH
- OTHER

JOB NAME:

APPROVED BY:

CUSTOMER:

DATE: