

### Composition

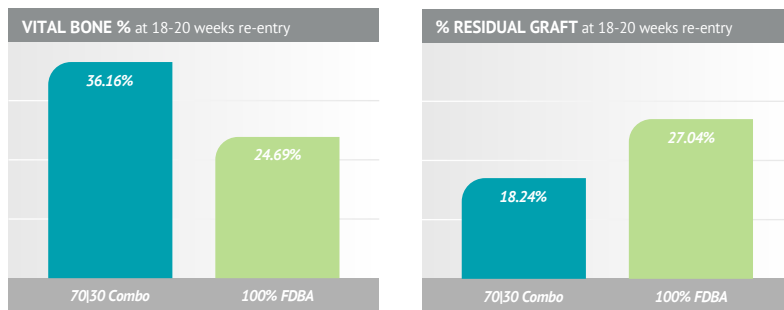
- 70% Mineralized Cortical Allograft particulate
- 30% Demineralized Allograft particulate

### BMP Testing for Every Lot

- Demineralized bone is tested in vitro to ensure it meets a BMP threshold statistically validated to be osteoinductive\*

### Published Research

Histologic healing following tooth extraction with ridge preservation using mineralized versus combined mineralized-demineralized freeze-dried bone allograft: a randomized controlled clinical trial. Borg TD, Mealey BL. J Periodontol. 2015 Mar;86(3):348-55.



- No statistical difference in dimensional changes

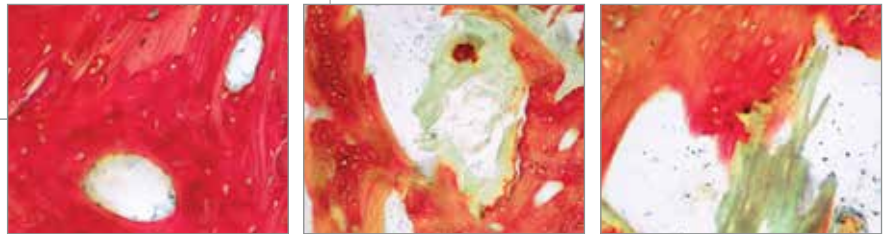
### Histology

Representative histology taken at 6 months from a case using 70/30 combination allograft

**86% vital bone, 14% residual graft**

**51% bone, 49% marrow**

Histology by Michael Rohrer, DDS, MS,  
University of Minnesota



### Safety

- Mineralized and Demineralized portion of each lot are sourced from a single donor
  - › Eliminates cross-contamination risk
- Sourced from FDA registered and AATB accredited tissue banks
- Terminally sterilized using E-beam irradiation

\*Data on file

### Available Sizes

|        |        |             |
|--------|--------|-------------|
| 0.5 cc | C73050 | (1 per box) |
| 1.0 cc | C73100 | (1 per box) |
| 1.5 cc | C73150 | (1 per box) |
| 2.5 cc | C73250 | (1 per box) |

