

Composition

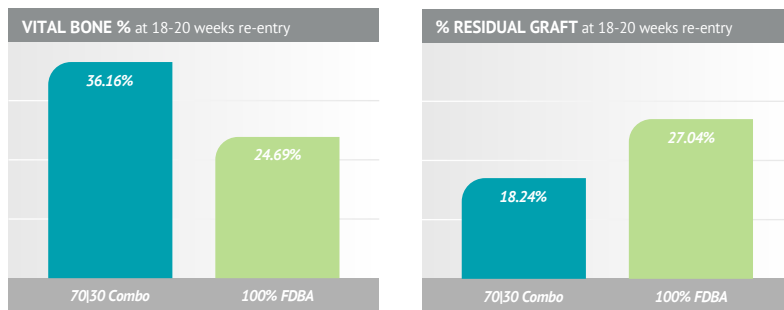
- 70% Mineralized Cortical Allograft particulate
- 30% Demineralized Allograft particulate

BMP Testing for Every Lot

- Demineralized bone is tested in vitro to ensure it meets a BMP-2 threshold statistically validated to be osteoinductive*

Published Research

Histologic healing following tooth extraction with ridge preservation using mineralized versus combined mineralized-demineralized freeze-dried bone allograft: a randomized controlled clinical trial. Borg TD, Mealey BL. J Periodontol. 2015 Mar;86(3):348-55.



- No statistical difference in dimensional changes

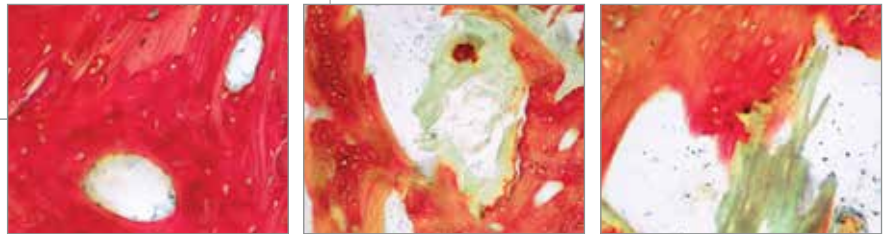
Histology

Representative histology taken at 6 months from a case using 70/30 combination allograft

86% vital bone, 14% residual graft

51% bone, 49% marrow

Histology by Michael Rohrer, DDS, MS,
University of Minnesota



Safety

- Mineralized and Demineralized portion of each lot are sourced from a single donor
 - › Eliminates cross-contamination risk
- Sourced from FDA registered and AATB accredited tissue banks
- Terminally sterilized using E-beam irradiation

*Data on file

Available Sizes

0.5 cc	C73050	(1 per box)
1.0 cc	C73100	(1 per box)
1.5 cc	C73150	(1 per box)
2.5 cc	C73250	(1 per box)

