

Trends in Paid Child Care Use Over Time in the U.S.

What predicts Paid Child Care use?



Labor force attachment
particularly for mothers

Household income
paid care rises as income rises



Educational attainment
paid care rises with more education

What affects Paid Child Care use in States?

Child care costs
as a share of income

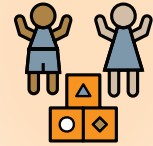


Federal and state subsidies and offsets
(such as tax credits) as a share of income

Availability of publicly provided care
(primarily public preschool)



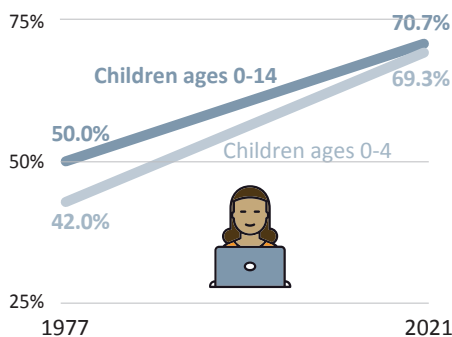
More than 75%
of children in
Paid Child Care are
age 8 and under.



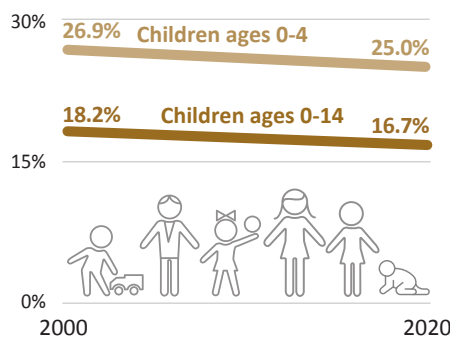
That's
9.4 million
children

Factors in Paid Child Care Use

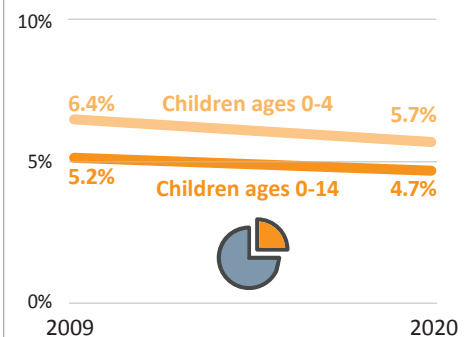
Labor Force Participation by Moms
(1977 - 2021)



Children in Paid Child Care
(2000 - 2020)

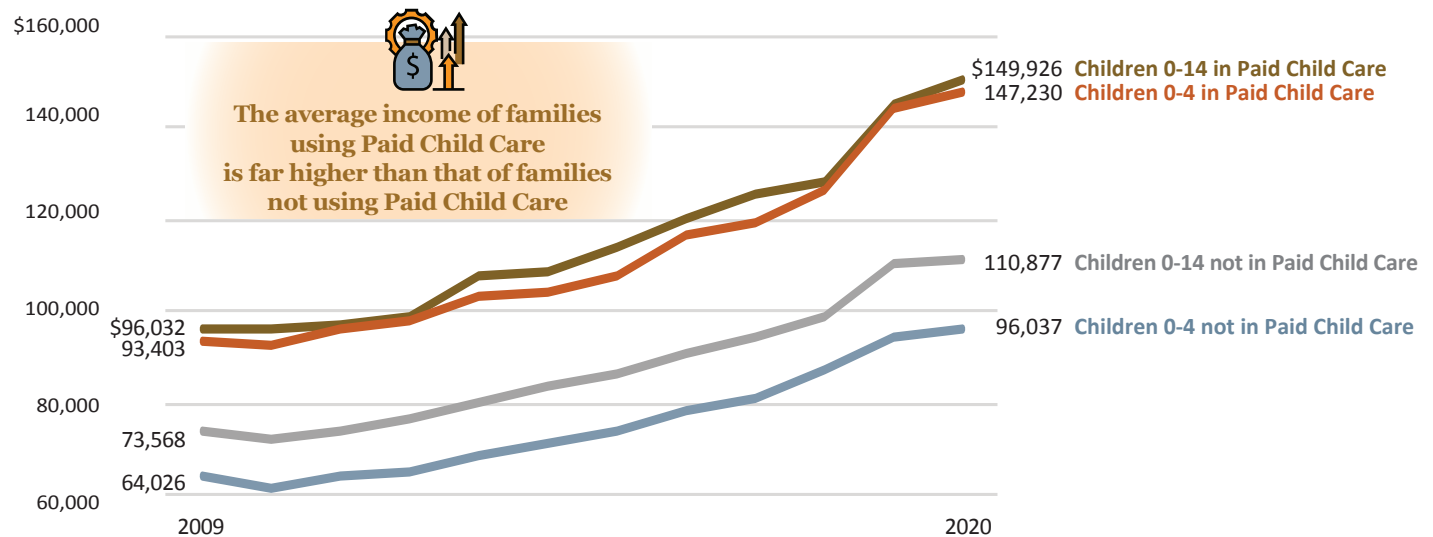


Income Share Used for Paid Child Care
(2009 - 2020)



Source: IPUMS USA - University of Minnesota, U.S. Census Bureau, and RegionTrack calculations. Child care use data was first collected in 2001. Child care expenditure data was first collected in 2010.

Household Income for Children Ages 0-14 (2009 - 2020)



Source: IPUMS USA - University of Minnesota, U.S. Census Bureau, and RegionTrack calculations.