

COUNTRY LIFE

EVERY WEEK

OCTOBER 12, 2022

Interiors special A pocket Palladian paradise



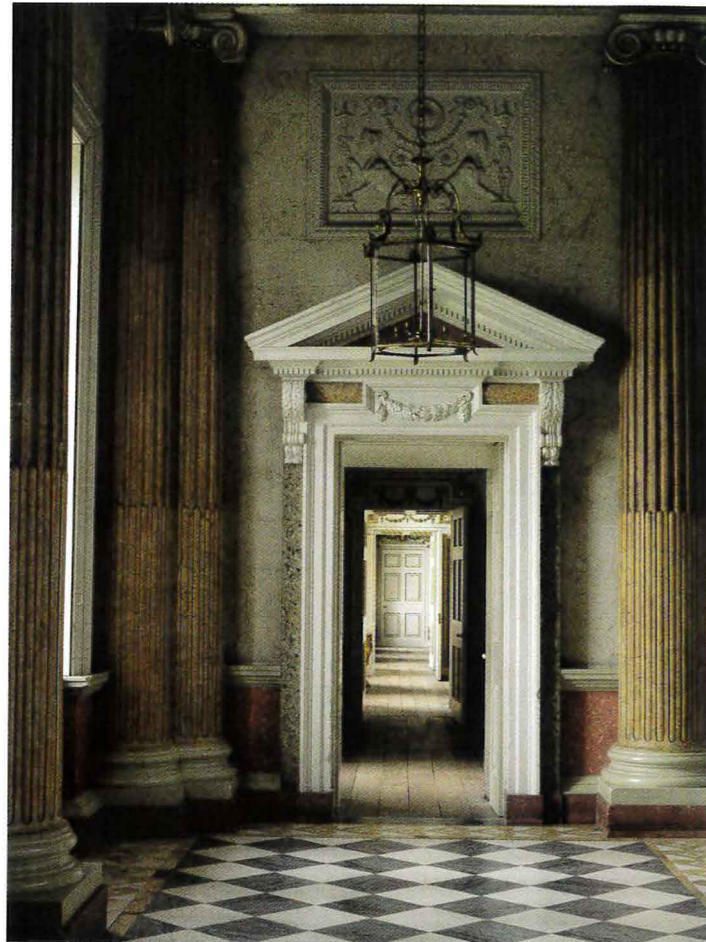
UTURE
41
9 770045 885672

Simple kindness: the art of decency

The country lore of Roald Dahl and Ronald Blythe

Design update

Eye-catching furniture, lighting and accessories, selected by Amelia Thorpe

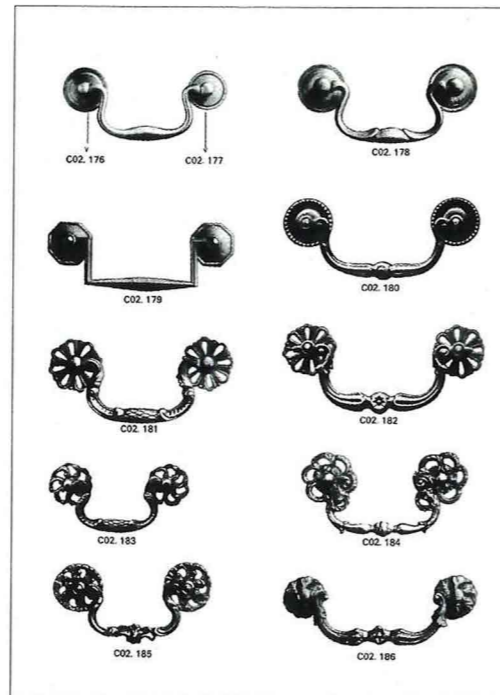


◀ **Grand piece**

The Grand Dolphin lantern, £15,360, joins the lighting collection at Jamb, long known for its finely crafted designs. The classical hexagonal brass design, drawn from the late-Georgian period, features double scrolling supports terminating in acroteria, the centre fitted with five candleholders (020-7730 2122; www.jamb.co.uk)

▶ **Making history**

J. D. Beardmore & Co has been hand-making door, window and cabinet iron-mongery since 1860. Now, it is offering customers the opportunity to select a period design from its extensive archive and have it custom made, either from an original mould or a new, hand-carved pattern. Prices from £250 (020-7351 5444; www.beardmore.co.uk)



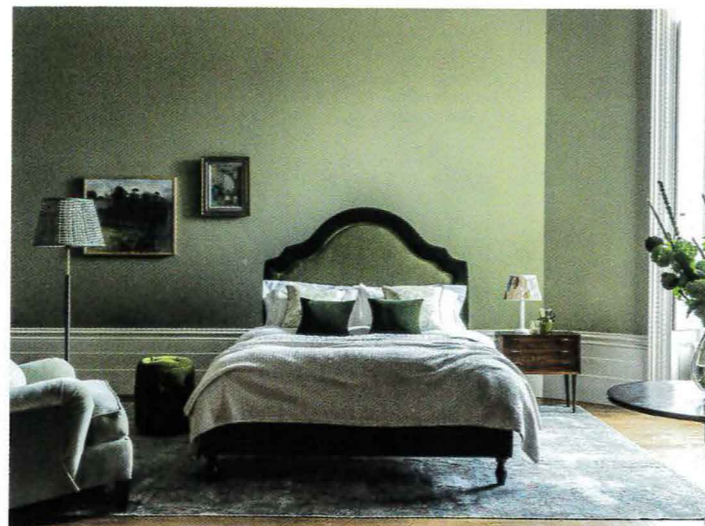
▼ **Statement pieces**

From a selection of indoor planters and vases designed to add decorative impact to any room, Ornamenti's Grand Cosimo terracotta vase, £1,495, is handcrafted in Galestro clay in Tuscany (01423 400100; www.ornamenti.co.uk)



◀ **Light touch**

A classic favourite for above a kitchen table, the Lucia rise-and-fall pendant, £780, has had a chic update and is now available in the Rosa pink (020-7731 8886; www.hectorfinch.com)



▲ **Sweet dreams**

Upholstered-furniture specialist George Smith introduces its first bed collection this month, featuring four timeless and fully customisable designs with smart detailing, from nail heads to contrast piping. Ellis, from £6,700 for a king size, is shown here (020-7384 1004; www.georgesmith.co.uk)



Glass Ball table lamp with Cream Pinprick shade, £1,776, Charles Edwards (020-7736 8490; www.charlesedwards.com)



Jalousie lamp in Old Gold, £210.09, with 35cm (14in) **Sloped Oval Royal Oyster silk shade**, £67.73, Jim Lawrence (01473 826685; www.jim-lawrence.co.uk)



Charles Turquoise lamp, smaller, £97, with 26cm (10in) **Short Drum Saffron shade**, £55, Pooky (020-7351 3003; www.pooky.com)



Rutherford Urn table lamp, £413, with 18in **Warwick Lily linen shade**, £138, Vaughan (020-7349 4600; www.vaughandesigns.com)

Lady lamp base, large, £650, with **Empire Green Pink shade**, £225, Wicklewood (020-7460 6493; www.wiklewood.com)



Bright lights

Table lamps to add a decorative note to your room, selected by Amelia Thorpe



Cabana table lamp, £150, with Tapered 20cm (8in) **Drum Airforce Blue shade**, £63, David Hunt Lighting (01295 672628; www.davidhuntlighting.com)



Rain Drop Incalmo table lamp, £1,164, with 38cm (15in) **Thyme Slate silk shade**, £384, Hector Finch (020-7731 8886; www.hectorfinch.com)



Cube lamp, small, £733, Julian Chichester (020-7622 2928; www.julianchichester.com)



Tall Carved Weathered lamp base, £245, with Embroidered Linen 14in **Empire shade**, £108, Susie Watson Designs (0344 980 8185; www.susiewatsondesigns.co.uk)



Duke polished brass lamp, with 18in **Bongo Chalk linen shade**, £3,084, Porta Romana (01420 23005; www.portaromana.com)