

HOUSE & GARDEN

November
2023

Creatives' spaces

DESIGNERS AT HOME + LANDSCAPERS IN THEIR GARDENS + ARTISTS IN THEIR STUDIOS



ART FOCUS: *What to DO, SEE and BUY*



INSIDER news

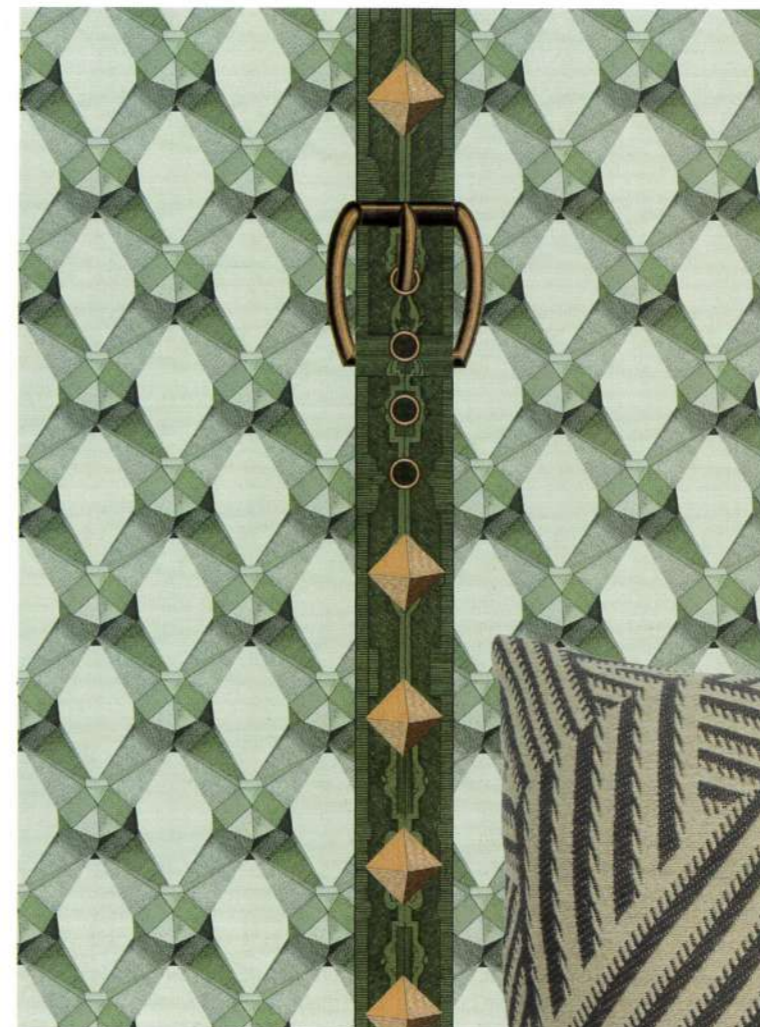


Top brass

Ideal above a kitchen island or table, **Hector Finch's** 'Leila' brass triple pendant (here in antique brass) is available with shades in three sizes in a satin or bespoke painted finish and has a custom-made horizontal bar that can be adjusted in length. From £2,214 for the small-shade version. hectorfinch.com

EXPRESS YOURSELF

Part of the Orient Express wallpaper collection, inspired by the iconic train's glamorous journeys through Venice, Paris and Vienna, this new 'Luxury Detail' wallpaper from **MindTheGap** is available in three colourways – original (shown) bordeaux and vineyard. It costs £149 a 10-metre roll. 07340 284169; mindthegap.com



Best bud

The 'Budleigh' is a new design from sustainable bed and mattress maker **Naturalmat**. Its solid beech frame can be paired with a choice of mattresses, including the 'Splendid', which is cushioned with layers of recycled denim topped with breathable organic wool. Shown with the sprung 'Sumptuous' mattress, the 'Budleigh' bed is upholstered in bouclé from Naturalmat's range of fabrics. From £1,100 for a single. naturalmat.co.uk



INTO PRINT

Designed in collaboration with interior designer Federico Forquet, **Liberty's** FuturLiberty collection includes 16 eye-catching designs in a variety of woven, embroidered and printed fabrics, as well as a range of cushions and throws, all featuring geometric abstract patterns. This 'Shadow Stripe Weave' cushion in piccadilly is £135. The design is also available as a linen mix fabric for £170 a metre. libertylondon.com ▷