



HECTOR FINCH

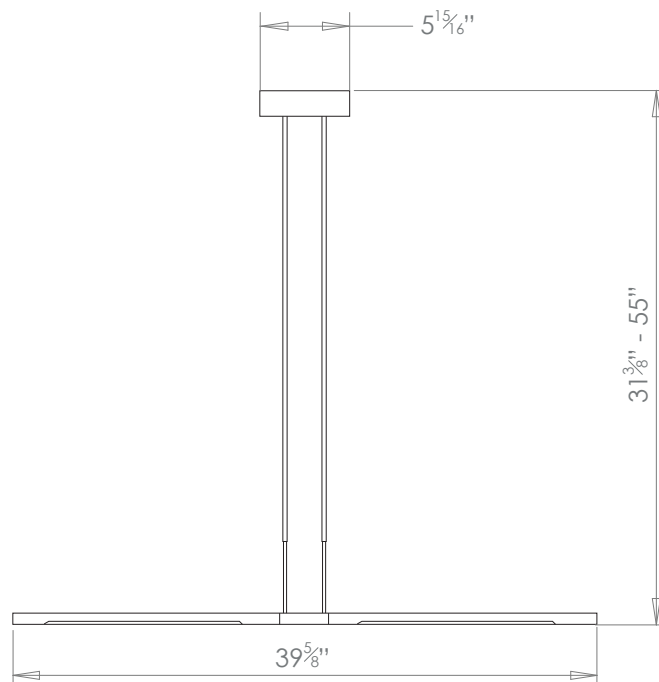
## PEN ADJUSTABLE PENDANT LAMP SMALL



PRODUCT CODE PL423S

CATEGORY: CHANDELIERS & PENDANTS

### DIMENSIONS





HECTOR FINCH

PRODUCT CODE PL423S

CATEGORY: CHANDELIERS & PENDANTS

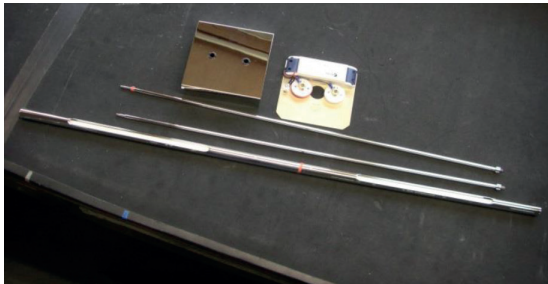
---

## PEN ADJUSTABLE PENDANT LAMP SMALL

<b>LAMP TYPE</b>	<b>USA</b> 2 x LED-Line 150 (Incl.)
<b>FINISH OPTIONS</b>	Brass Polished Lacquered, Brass Brushed Lacquered, Chrome, Nickel Polished (shown) and Nickel Matte.
<b>SIZE &amp; SIMILAR OPTIONS</b>	Pen Adjustable Pendant Lamp Medium (PL423M) and Pen Adjustable Pendant Lamp Large (PL423L).
<b>WEIGHT</b>	7lb 1oz
<b>ADDITIONAL INFORMATION</b>	120 V bulbs not included.
<b>CLEANING AND MAINTENANCE INSTRUCTIONS</b>	Metalwork: We recommend a light polish with a non-abrasive lint free cloth. Do not use any metal cleaning products on the fixture as it can remove the finish entirely. Unlacquered brass finish will patinate slowly over time and can be brightened to brass by the use of a brass cleaning agent.

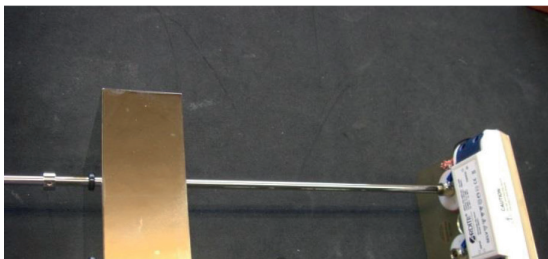


## INSTALLATION INSTRUCTIONS



PEN 100 consists of:  
1 x ceiling - mounting rail  
(incl. Arditì LED control gear)  
1 x Canopy  
2 x sway bars  
1 x lamp body (contains 2 x LED Line 150)

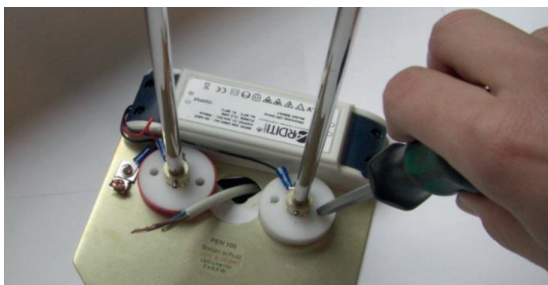
1. Lay out the lamp parts on the floor.



2. Pendulum poles through the canopy into the  
Screw in the ceiling mounting rail.  
Counter with Allen screw.  
ATTENTION: Red marked side of the canopy  
must be connected to the hole in the screen,  
where the black ring is.



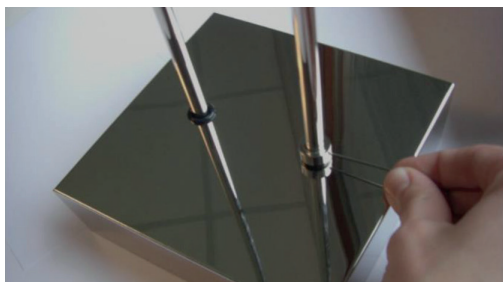
3. Screw the pendant rods into the lamp body.  
ATTENTION: Red marked side of the canopy  
must be connected to the hole in the screen,  
where the black ring is.



4. Attach the light to the ceiling.  
(Easier with an assistant.)



5. Make the electrical connection.  
(Only by electricians.)



6. Push up canopy with adjusting rings and  
counter.