



HECTOR FINCH

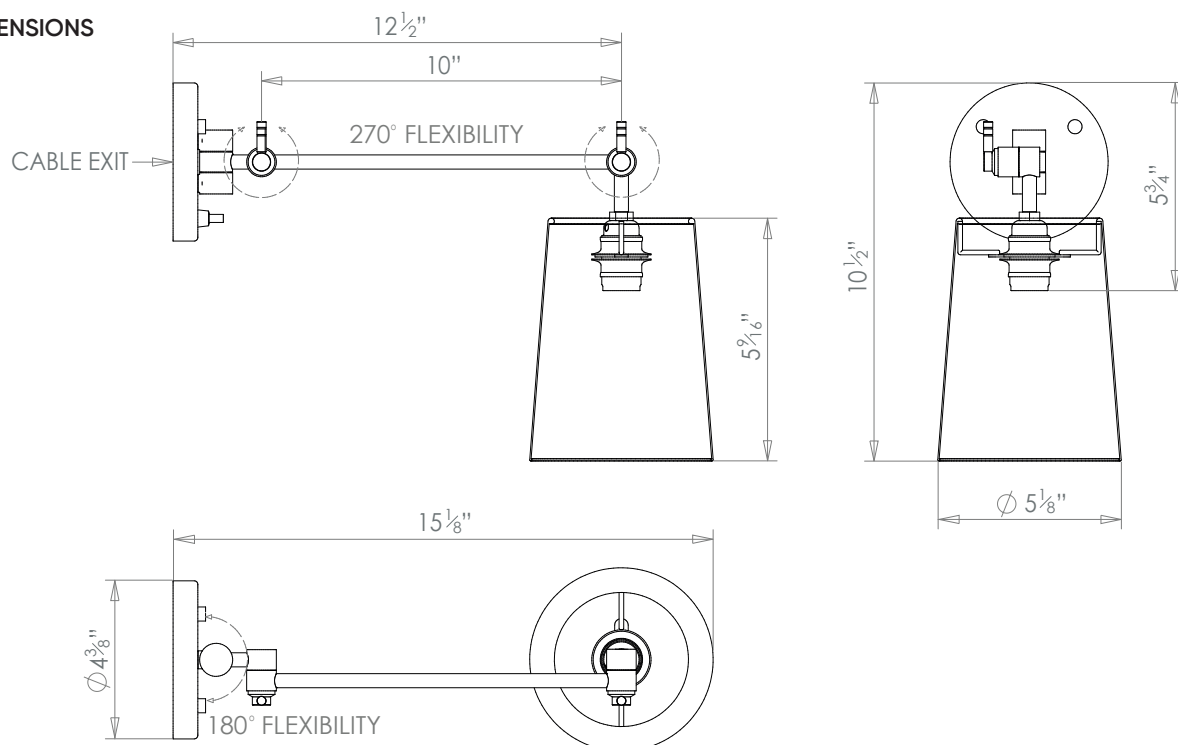
KATIE WALL LIGHT



PRODUCT CODE WL31

CATEGORY: WALL LIGHTS

DIMENSIONS





HECTOR FINCH

PRODUCT CODE WL31

CATEGORY: WALL LIGHTS

KATIE WALL LIGHT

LAMP TYPE	USA 1 x 40w (Max) E12 Golfball
FINISH OPTIONS	Antique Brass, Brass Polished Lacquered, Brass Polished Unlacquered, Bronze (shown), Chrome, Nicke Matte, Nickel Polished
MOUNTING	Our wall lights are designed to fit a standard US j-box with mounting holes 3 5/16" apart.
ADDITIONAL INFORMATION	Supplied with shades in all Hector Finch fabrics or customer's own material as required.
CLEANING AND MAINTENANCE INSTRUCTIONS	<p>Metalwork: We recommend a light polish with a non-abrasive lint free cloth. Do not use any metal cleaning products on the fixture as it can remove the finish entirely. Unlacquered brass finish will patinate slowly over time and can be brightened to brass by the use of a brass cleaning agent.</p> <p>Fabric Shades: Wipe gently with a dry cloth or dust lightly with a feather duster. Repeat regularly to prevent the build up of dust. Regular cleaning will prevent the possibility of dust becoming ingrained. Do not let water or moisture come into contact with the shade.</p>