



This zone flourishes with life, powered by the sunlight and resulting algae and other marine plants. 90% of all known ocean life lives here, although it makes up only about 10% of the ocean.

Although there is some sunlight that penetrates through to this layer, there is not enough to power photosynthesis and for most plants to grow.

Most of the world's seafloor lies in this zone. Within the midnight zone, there are sea mounts, ocean ridges, hydrothermal vents. Some animals dive down to these depths to feed or breed. Others live in this zone relying on food to fall from above, or using lures to attract their prey. Only about 1% of all known ocean species live in the Midnight Zone.

The abyssal plain is the single largest environment on the planet. The pressures are immense and there is little oxygen in these deep waters. It covers over 85% of all ocean basins. Covered in layer of thick sediment, it is home to a strange variety of creatures.



Sunlight zone

Twilight zone

Midnight zone

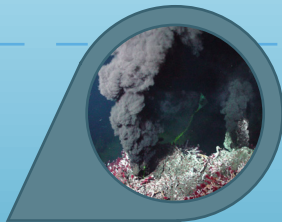
zone



305m
Triton Submersible



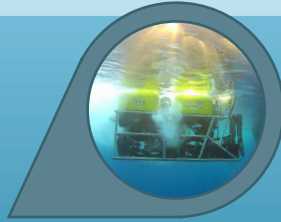
318m
Nuno Gomes 2005
(deepest scuba dive)



1700m
Hydrothermal vent field



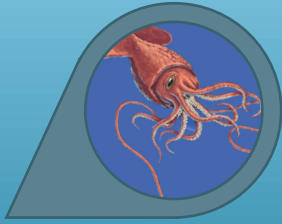
1850m
Sixgill shark
(deepest shark)



2000m
ROV



2992m
Cuvier's beaked whale
(deepest whale)



2197m
Colossal squid



3962m
Dumbo Octopus



4500m
Anglerfish

3790m : Average depth of the ocean

Abyssal

6000m

This is the realm of the ocean trenches, taking their name from Hades, the ancient Greek name for hell. These depths descend from the abyssal plain, with only 37 such valleys or trenches found across the oceans. We know little about the life in these trenches, although it seems you might find a sea cucumber or two!



6800m
Cusk Eel



8145m
Hadal snailfish
(deepest fish)

8605m : Deepest point in the Atlantic Ocean

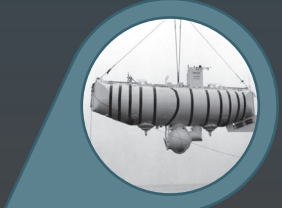


9316m
Deep sea shrimp

The volume of the ocean is an estimated 1.3 billion cubic kilometres of water

Hadal Zone

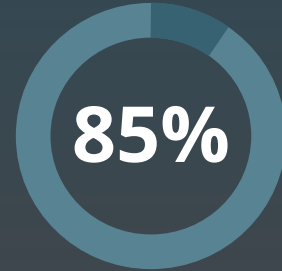
10994m
Bathyscape Trieste 1960
(first human voyage to deepest point)



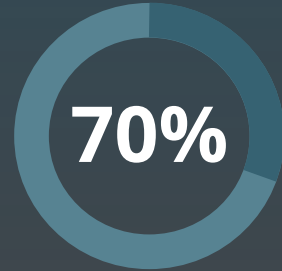
10150m
Sea cucumber



98%
of the planet's living space is in the ocean



85%
of the ocean is unmapped



70%
of the Earth's surface is water

10994m