



BESPOKE DESIGN

Contract furniture specialists for the hotel, leisure & restaurant industry

bespoke // hello

about our company...



lisa cluer
managing director

Hello and welcome to Inside Out Contracts; and a quick overview of our company. As one of the UK's leading manufacturers and suppliers of contract furniture, Inside Out has become a well-respected name within the industry. One of the secrets to our success is our like-minded team of design enthusiasts who have an eye for detail and focus on outstanding service.

From independent cafés to global hotel brands, we measure each project big or small as an additional chapter to our successful story. Working alongside designers, architects and end users our passionate and dedicated team are here to bring your design ideas to life. So come on a journey with us and see for yourself what Inside Out can do for you.

a snapshot
of our diverse clients...



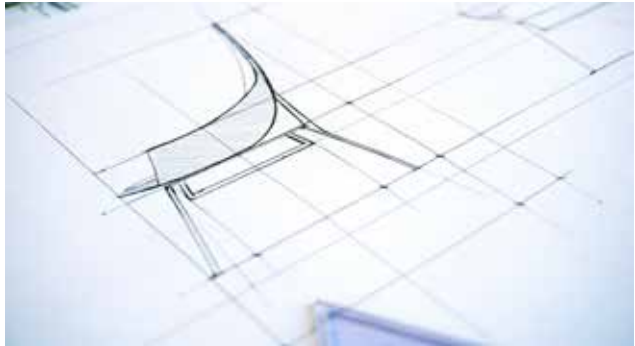


bespoke // what we do

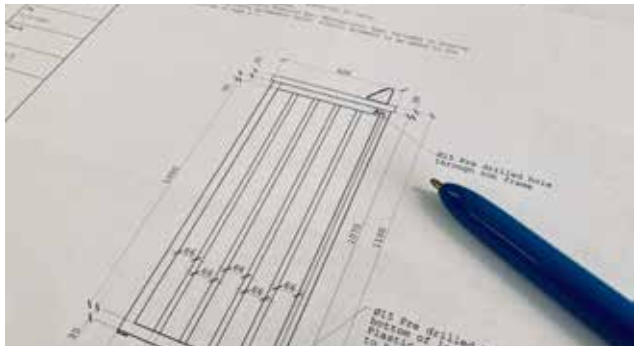
our everyday...

Our hands-on approach means each project gets the individual attention it deserves and we work closely with clients to agree a brief to supply products that reflect the individual style and use of their space. From making your existing drawings ready for manufacture to designing a brand new product we are here to assist to any level necessary.

furniture
development



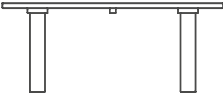
bespoke
manufacturing
drawings



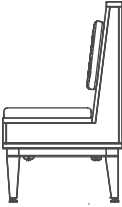
space planning



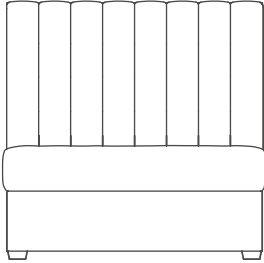
types of furniture development...



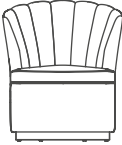
bench



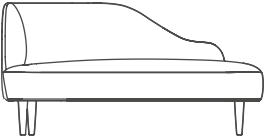
banquette



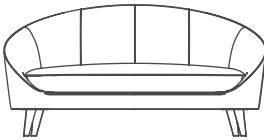
headboard + bed



chair



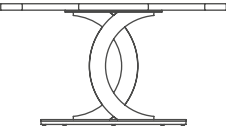
chaise



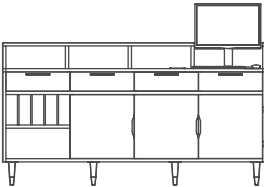
sofa



stools



tables



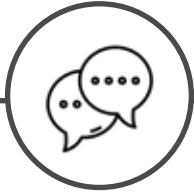
units

Can't see what you are after? Let us know and we can make it happen.



your idea

No matter how big or small your concept, we will meet each new idea with enthusiasm and offer you options, helping you to discover a fully-fledged idea that fits in with your needs and desires.

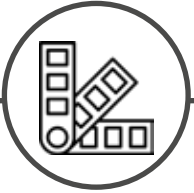


discussion

Here, a member of our sales team will be able to guide you through different options to make your concept into a reality. We aim to meet all the criteria of your brief from budget to delivery date.

what to discuss...

- brief**
- budget**
- materials**
- style**
- user type**

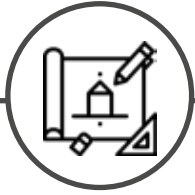


design

With your options finalised and budget confirmed, we get to the good part; the design. Our team of designers will draft your concept ready for manufacture; they will produce a range of deliverables such as manufacturing drawings that include realistic visuals.

what we do...

- manufacturing drawings**
- visuals/renders**
- space plans**
- 3D space plans**
- concept comparisons**
- presentation boards**



develop

With the design deliverables received, we are ready to discuss any amendments or queries that you have, no matter what they might be. Here, we can discuss potential issues with site, budget, sizing, comfort etc.

what to discuss...

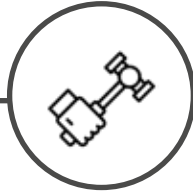
site issues

finishes

comfort

access

budget



manufacture

We have carefully selected and partnered with a group of high-quality and responsible workshops; together, we will ensure that your furniture or product is sustainably produced to the highest standards. Once completed, we will carry out quality checks to ensure everything is up to scratch.



deliver

With all your bespoke pieces completed, they are wrapped and packaged ready to be distributed by our dedicated delivery team. We can offer anything from curb-side drop off to full project installation, no matter the size or destination.

what we offer...

reliable delivery drivers

economical deliveries

premium deliveries

packaging removal

project installation

installation management

our workshop partnerships...

From inspiration to installation, each phase is carefully considered to ensure quality. The conscious choice to keep our workshop in the UK allows us to work closely with the team and track each stage of the production process. From a simple stool to the intricacy of custom banquette seating; each piece benefits from expert and experienced craftsmanship.

We pride ourselves on our craftsmanship, continuously striving to provide our customers with products and services that meet and exceed expectations. We are committed to on-going improvement and have established a Quality Management System which provides the framework for measuring and improving our performance.

In addition, we align ourselves with responsible workshops and factories who manufacture 100% recyclable plastic chairs or use FSC and PEFC certified woods. This means if you buy a timber chair from Inside Out you can be sure you are actively endorsing the planting of trees and the correct management of the world's natural resources as per the FSC/PEFC criteria.

Being passionate about good design and quality construction are just a few reasons we are part of reputable memberships such as 'The Guild of Master Craftsmen' and the BCFA. We spend a lot of time sourcing and testing new products from design hotspots around the globe. We pride ourselves on our attention to detail and have total confidence in every seam, stitch, joint and groove of our furniture – you could say that we know our products Inside Out!

a snap shot

the types of experience craftsmen we work with...

metal fabricators

frame makers

upholsterers

CNC specialists

joiners

stone masons



+ A -

portfolio

A selection of our favourite projects that show how our bespoke furniture can enhance the space and the area.



project | MPC Sky Bar, Soho
Bespoke long sofa.



project | Cora Pearl, Covent Garden

Bespoke fluted banquette with a double tier seat pad. Seating was designed to incorporate seat storage as well as ventilation in different sections. The downstairs banquette were also customised to flow around an existing steel pole. Also supplied were bespoke fabric wall panels.



project | Get Connected Lounge, Two Fifty One

Bespoke high work table designed with lights, power and cable management. Other items included bespoke marble coffee tables with metal rod bases.





project | The Stafford Hotel, London

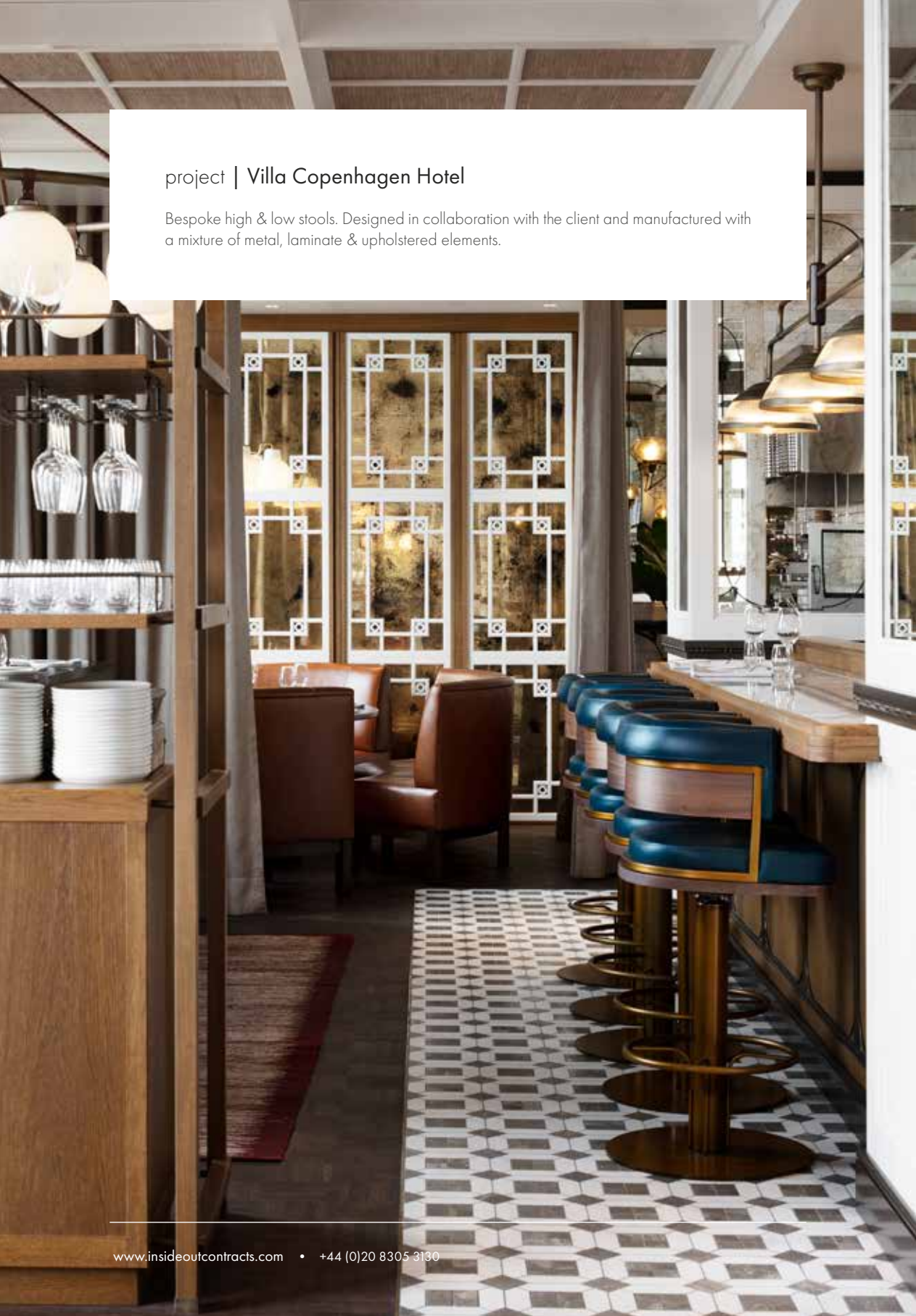
Bespoke fluted headboards with a detailed profile wooden frame. Made to be knock-down to all for access to the rooms. The headboards also incorporated reading lights with cable management and fixings.





project | Villa Copenhagen Hotel

Bespoke high & low stools. Designed in collaboration with the client and manufactured with a mixture of metal, laminate & upholstered elements.





project | Caractère, Notting Hill

Bespoke banquette seating designed with loose overfilled back cushions and rounded, curvaceous seat pads. The seating came in two styles; one with front slipper-cup legs and a gold metal laminate back plinth, and the other with four slipper-cup legs.





project | Colony Club, Mint Casino Mayfair

A collection of bespoke armchairs designed to incorporate fringe, upholstered column tables, bespoke stools with fringe trim, tiered coffee table, sofa and dining tables.



space planning

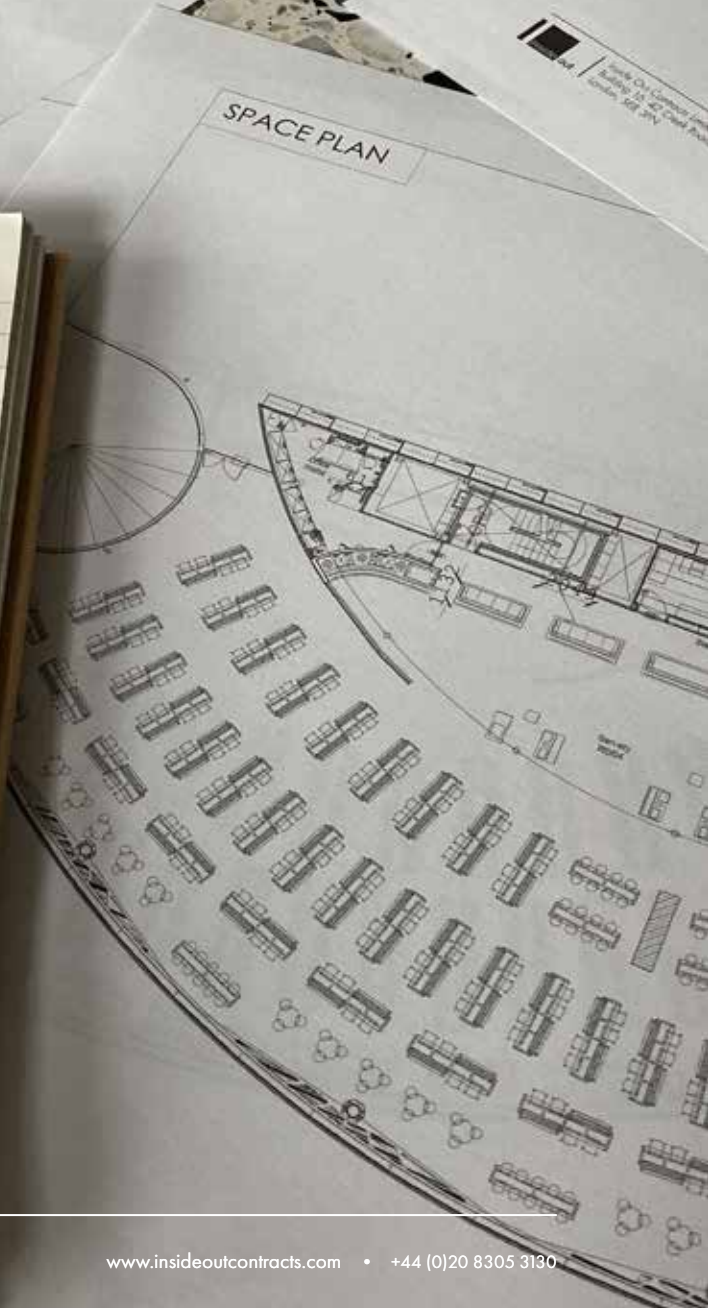
A selection of our favourite projects that show how our space planning can help fulfil the maximum potential of the space as well as giving you an insight into what your project will look like.



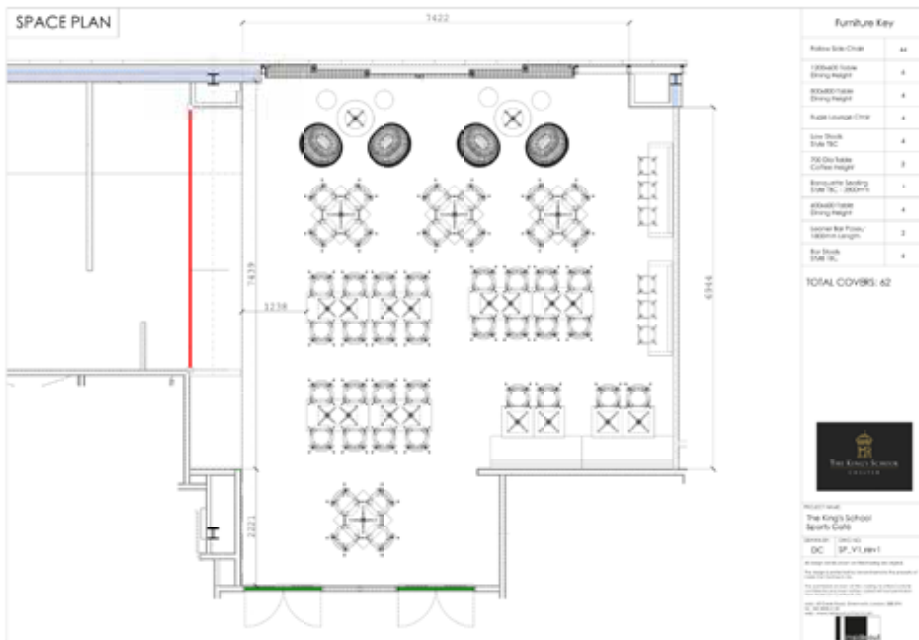
DINING BENCH

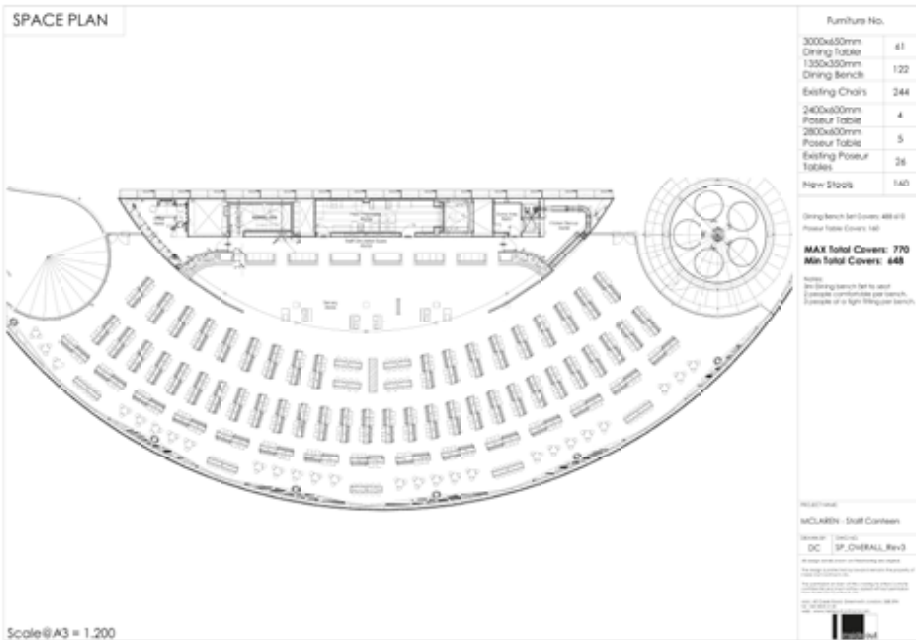
SPACE PLAN

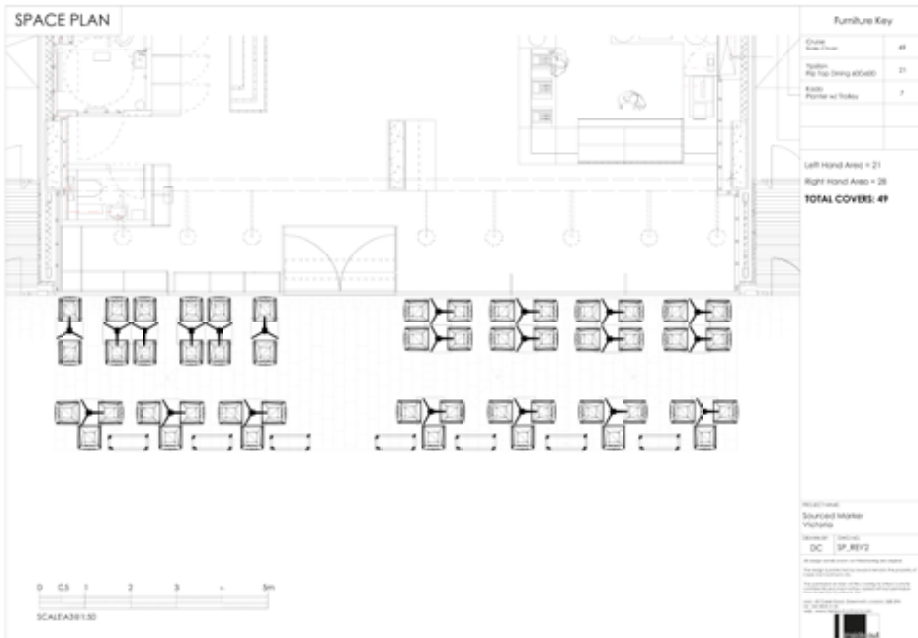
Dining Benches
2 users per bench = confort
3 " " " " " tight















manufacturing drawings

A selection of our manufacturing drawings and the end results delivered to the client.



project | **Stephen's Green Hotel, Dublin**

Bespoke banquette (deep button dining sofa, surface button styles & deep button bench), dining tables, coffee tables, and sideboards with real and faux drawers.

project | The Royal Foresters, Ascot

Bespoke Maître D' station. Designed to be the greeting point, it needed to house a computer, printer, and menus as well as other items. Made with 45° staggered plank-style panels, soft-close drawers, custom-made inset door-handle profiles, slipper-cup legs and cable management. Other items included bespoke sofas (deep button & curved), marshmallow stools with buttoning detail, bar stools and chairs.

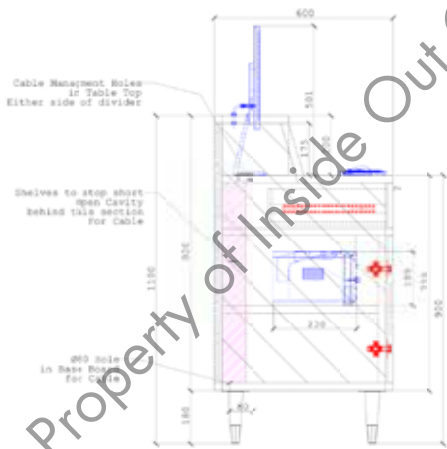






Cable Management:

Please Note:
 Felt floor savers to be added to Legs if required.
 Legs to have a tapered leg to fit Brass Slipper Cup - Ref Hilton Brass Slipper Cup).
 2x Cable Management Holes with Grommets - REF. 429.88.303 Cable Outlet Rect 55x105mm P1 Black
 1x 80mm Dia Hole in Base of Maitre D Station to Allow for Cabling.
 Cable Cavity as shown in Drawings to allow for cable from computer and Printer.
 4x Handles to be supplied by Client.
 Soft Close Drawer Runners.



Cable management Grommets:



REF. 429.88.303 Cable Outlet Rect 55x105mm P1 Black
 Cut Out 105x55mm

IMPORTANT NOTE:
 Actual product finishes may vary from those shown on your monitor. Always refer to a physical sample.
 Finishes can be verified by ordering a sample however this may affect lead times.



project | Select Ten, Showroom Apartments

Bespoke headboards, bed bases and bedside tables for the master suite and guest room. Each set made to fit the individual room's distinct style. Headboards included power socket management as well as custom fittings.



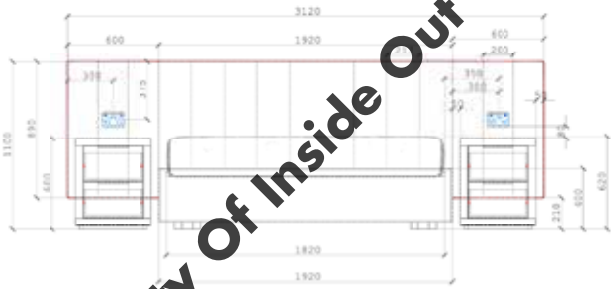




Overall Front View

Please Note:
 Supplied with floor savers suitable for carpet.
 Mattress Size: W: 1800mm D:1980mm H: 270mm
 Feet to be inset as shown, to give the illusion of the bedbase to be floating.
 Bedbase to be made in 2 sections, due to access. Supplied with fixings to secured together on site.
 Headboard to be made in 3 Sections, due to access. To be secured together and then mounted to wall via split batter
 Piping shown in RED.
 Plug Holes to be cut into Headboard as per drawing. Plug to wired and installed by Client's electrician.

Client
Job Title
Drawing Title Master Bedroom Headboard & Bedbase
Date 25/04/2017
Drawn By DC
Doc No 16581_BS_11_rev1 page 5 of 12
Notes FINISHES: As per invoice <div style="display: flex; align-items: center;"> <div style="width: 15px; height: 15px; background-color: #808080; margin-right: 5px;"></div> Upholstery & Piping: Warwick Plush Velvet Silver </div> <div style="display: flex; align-items: center;"> <div style="width: 15px; height: 15px; background-color: #000000; margin-right: 5px;"></div> Feet: Stained Black </div>
<small> All design details shown on this drawing are copyright and drawings are produced by the client under the protection of Inside Out Contracts Ltd. No reproduction or part or full drawing is allowed, all copyright must remain with Inside Out Contracts Ltd. All rights reserved. </small>



Property Of Inside Out Contracts

IMPORTANT NOTES:
 Actual product finishes may vary from those shown on your monitor. Always refer to a physical sample.
 Finishes can be verified by ordering a sample however this may affect lead times.




project | The Collective, Canary Wharf

Bespoke coffee table, designed with 200x60mm spruce slats stained in 3 distinct tones, cladding a plywood body. Other items included bespoke modular sofas, dining sofas with pullover cover-effect upholstery, cushions for a slatted circular bench and marshmallow stools with plinth.



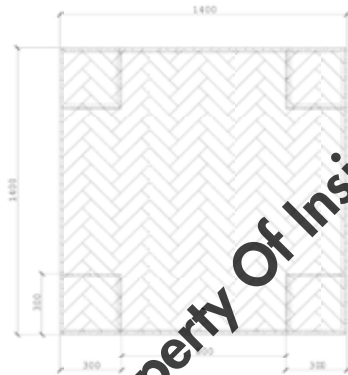




Client
Job Title
Drawing Title Bespoke Coffee Table
Date 12/06/2019
Drawn By DC
Draw No 19183_BS_04_rev2 page 2 of 3
Notes FINISHES: As per invoice
<small>All copyright material shown on this drawing are uncopyrighted. This drawing is produced by, for and remains the property of Inside Out Contracts Ltd. This information can only be used to refer to a product and does not constitute an offer or a contract. Please refer to the contract documents for further information. Unit: All Dimensions, Imperial, Metric, UK, US, SI, etc. © 2019 Inside Out Contracts Ltd. www.insideoutcontracts.com</small>


Plan View

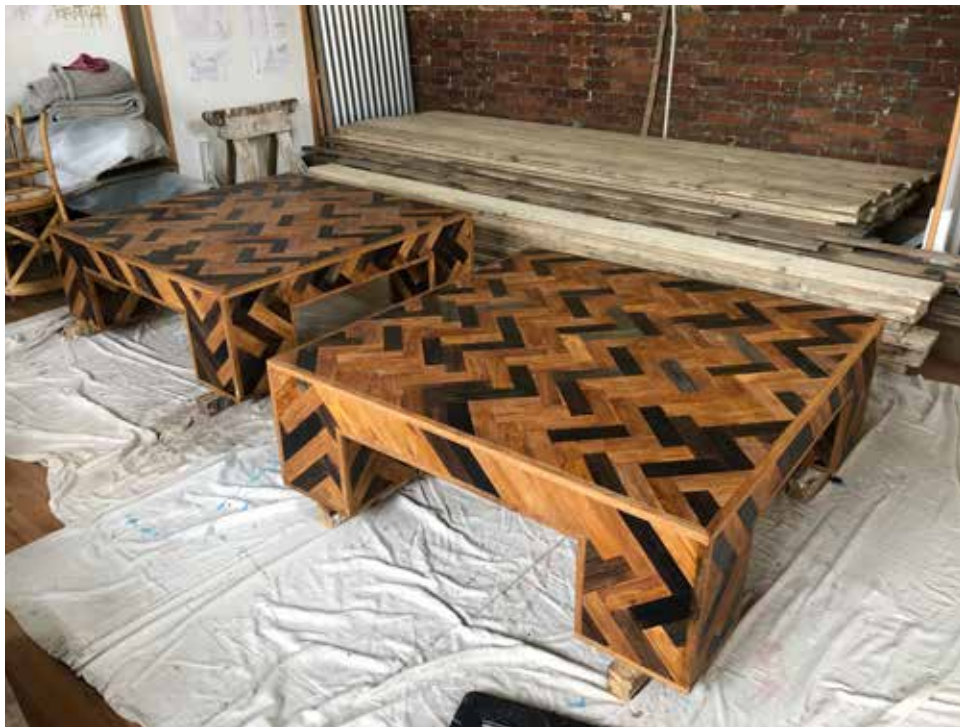
Please Note:
Supplied with floor savers.
Location and orientation of slats may differ from that shown in renders & drawing.
Please refer to reference images for Spruce slats look.
Edge Frame to blend in with the slats as much as possible.
Spruce Slats: W10mm D30mm
12mm Spruce Frame around border of herringbone slats.
Slats to be placed in a herringbone style.



Ref Image of Spruce.

Property Of Inside Out Contracts

IMPORTANT NOTE:
Actual product finishes may vary from those shown on your monitor; Always refer to a physical sample.
Finishes can be verified by ordering a sample however this may affect lead times.



project | IT London, Mayfair

A large selection of bespoke furniture including fluted chairs on a metal laminate plinth, fluted-backed chairs with slipper-cup legs, matching bar stools, deep-button dining sofas with metal frames and two styles of banquette seating (curved deep button and fluted).









Side View

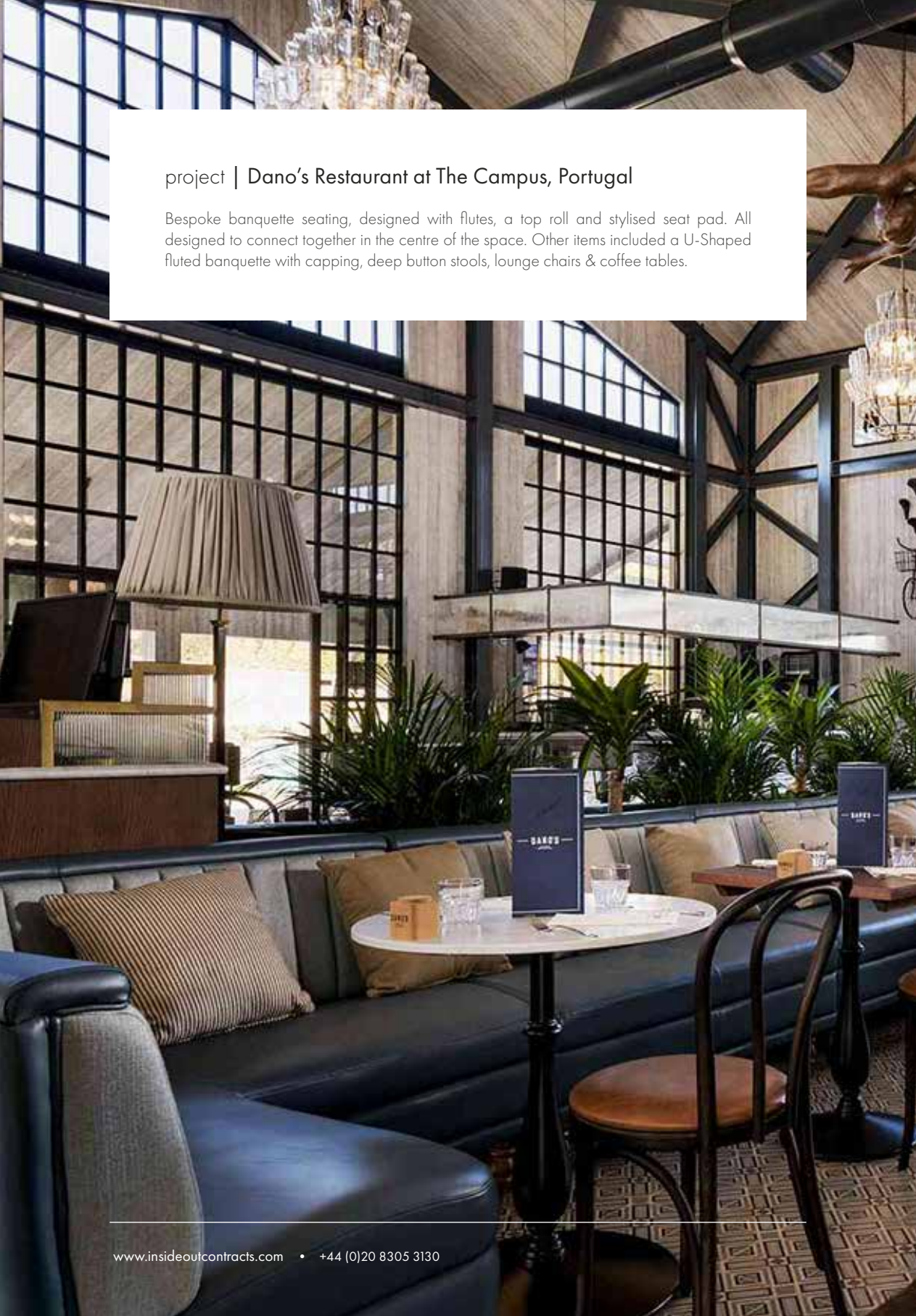
Please Note:
 Supplied with floor savers.
 Piping shown in red.
 Reflex foam with fibre wrap to be used.
 Seam in Laminate on plinth to match seam of upholstery.

Client
Job Title
Drawing Title Bespoke Lounge Chair
Date 29/07/2019
Drawn By DC
Draw No 19414_BS_03_rev1 page 4 of 5
Notes FINISHES: As per invoice <div style="display: flex; align-items: center;"> <div style="border: 1px solid red; width: 15px; height: 15px; margin-right: 5px;"></div> <div style="font-size: 0.8em;"> Upholstery & Piping: Refer to page 5 </div> </div> <div style="display: flex; align-items: center;"> <div style="background-color: #c0c0c0; width: 15px; height: 15px; margin-right: 5px;"></div> <div style="font-size: 0.8em;"> Plinth: A251 Brushed Gold Laminate </div> </div>
<small> © IT design services shown on this drawing are copyright. This drawing is confidential. You will receive the property of this drawing and you will not be allowed to copy it. All rights reserved. IT design services is a registered trademark of IT design services. All other rights reserved. IT design services, London, UK Tel: +44 (0)20 8305 3130 www.insideoutcontracts.com </small>



Property Of Inside Out Contracts

IMPORTANT NOTE:
 Actual product finishes may vary from those shown on your monitor. Always refer to a physical sample.
 Finishes can be verified by ordering a sample however this may affect lead times.



project | Dano's Restaurant at The Campus, Portugal

Bespoke banquette seating, designed with flutes, a top roll and stylised seat pad. All designed to connect together in the centre of the space. Other items included a U-Shaped fluted banquette with capping, deep button stools, lounge chairs & coffee tables.

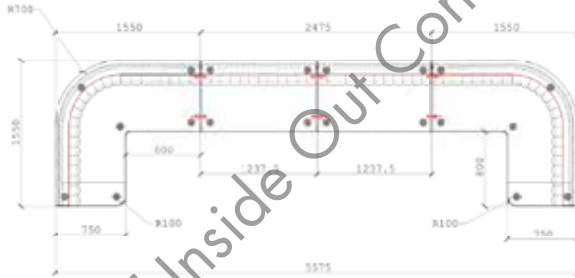




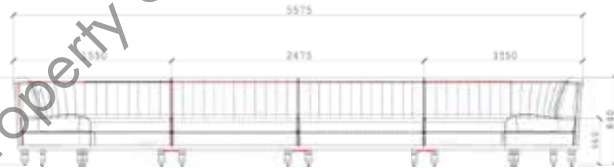
Client
Job Title
Drawing Title Banquette - Small U Shaped Group
Date 25/05/2018
Drawn By DC
Dep No 17779_BS_05_rev1 page 2 of 7
Notes FINISHES: As per Invoice <div style="display: flex; align-items: center;"> <div style="width: 15px; height: 15px; background-color: #333; margin-right: 5px;"></div> Outside Back, Seat Pad, Top Roll & Piping Upholstery: Crest Leather - Vele Cambridge </div> <div style="display: flex; align-items: center;"> <div style="width: 15px; height: 15px; background-color: #888; margin-right: 5px;"></div> Flutes Upholstery: Warwick Home Spun Dew </div> <div style="display: flex; align-items: center;"> <div style="width: 15px; height: 15px; background-color: #663300; margin-right: 5px;"></div> Legs: Stained to Match Client's Sample </div> <small> All design details shown on this drawing are original. The design is protected by law and remains the property of Inside Out Contracts Ltd. No reproduction or part of this drawing is allowed in any form without the written permission of Inside Out Contracts Ltd. 011 - 01 2266 2266 Warwick, London, UK 016 www.insideoutcontracts.com </small>
insideout design services

Overall Plan View

Please Note:
Piping Shown in Red. Upholstered in Crest Leather - Vele Cambridge.
Added Foam to Seat Pad to be curved, as per drawing.
Leg Model - WF0811 (5mm to be cut from bottom). Stained as per Client's Sample.
Sofa Connectors as per Image shown, shown in Red in Drawings. To be fitted at workshop prior to delivery.
Floor Saver to be supplied.
Faux Stitch detail to split Seat Pad. To go around Front and Sides.
All Sides to be finished. All Sides visible.



Overall Front View

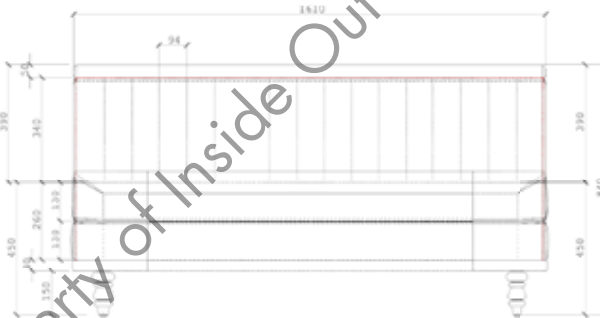


IMPORTANT NOTE:
Actual product finishes may vary from those shown on your monitor. Always refer to a physical sample. Finishes can be verified by ordering a sample however this may affect lead times.

Client
Job Title
Drawing Title Banquette - Straight Run Single
Date 25/05/2018
Drawn By DC
Dep No 17779_BS_07_rev1 page 3 of 4
Notes FINISHES: As per Invoice <div style="display: flex; align-items: center;"> <div style="width: 15px; height: 15px; background-color: #333; margin-right: 5px;"></div> Outside Back, Seat Pad, Top Roll & Piping Upholstery: Crest Leather - Vele Cambridge </div> <div style="display: flex; align-items: center;"> <div style="width: 15px; height: 15px; background-color: #888; margin-right: 5px;"></div> Flutes Upholstery: Warwick Home Spun Dew </div> <div style="display: flex; align-items: center;"> <div style="width: 15px; height: 15px; background-color: #663300; margin-right: 5px;"></div> Legs: Stained to Match Client's Sample </div> <small> All design details shown on this drawing are original. The design is protected by law and remains the property of Inside Out Contracts Ltd. No reproduction or part of this drawing is allowed in any form without the written permission of Inside Out Contracts Ltd. 011 - 01 2266 2266 Warwick, London, UK 016 www.insideoutcontracts.com </small>
insideout design services

Front View

Please Note:
Piping Shown in Red. Upholstered in Crest Leather - Vele Cambridge.
Added Foam to Seat Pad to be curved, as per drawing.
Leg Model - WF0811 (5mm to be cut from bottom). Stained as per Client's Sample.
NO Sofa Connectors REQUIRED.
Floor Saver to be supplied.
Faux Stitch detail to split Seat Pad. To go around Front and Sides.
All Sides to be finished. All Sides visible.



IMPORTANT NOTE:
Actual product finishes may vary from those shown on your monitor. Always refer to a physical sample. Finishes can be verified by ordering a sample however this may affect lead times.

work examples

A selection of work examples that indicate what we can do to help show off your ideas, visualise your concepts, win a client, get designs for your project etc.





Client's product reference images



Concept 1



Concept 2



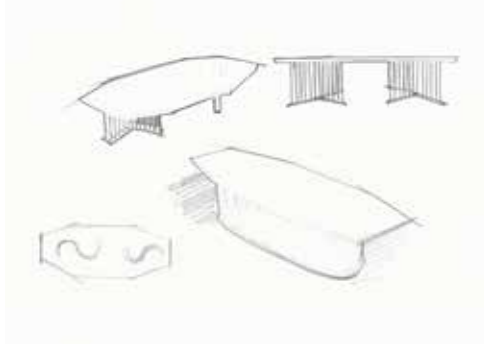
Concept 3



Adapted Concept



Chosen Concept



Client's product reference image



Concept 1



Concept 2



Client's New Direction



Revised Concept



Brass Detailing



Proving Concept



Chosen Concept









Original Concept



Developed Lounge Chair Concept

bespoke // **contact**

thank you for viewing...

Hopefully after seeing what we can offer and what we have done, your mind is racing with different ideas for your present or up and coming projects. We would love to hear from you for anything from little queries to a full brief of your next project. See below who best to contact regarding our bespoke process and possibilities:



how to contact us...

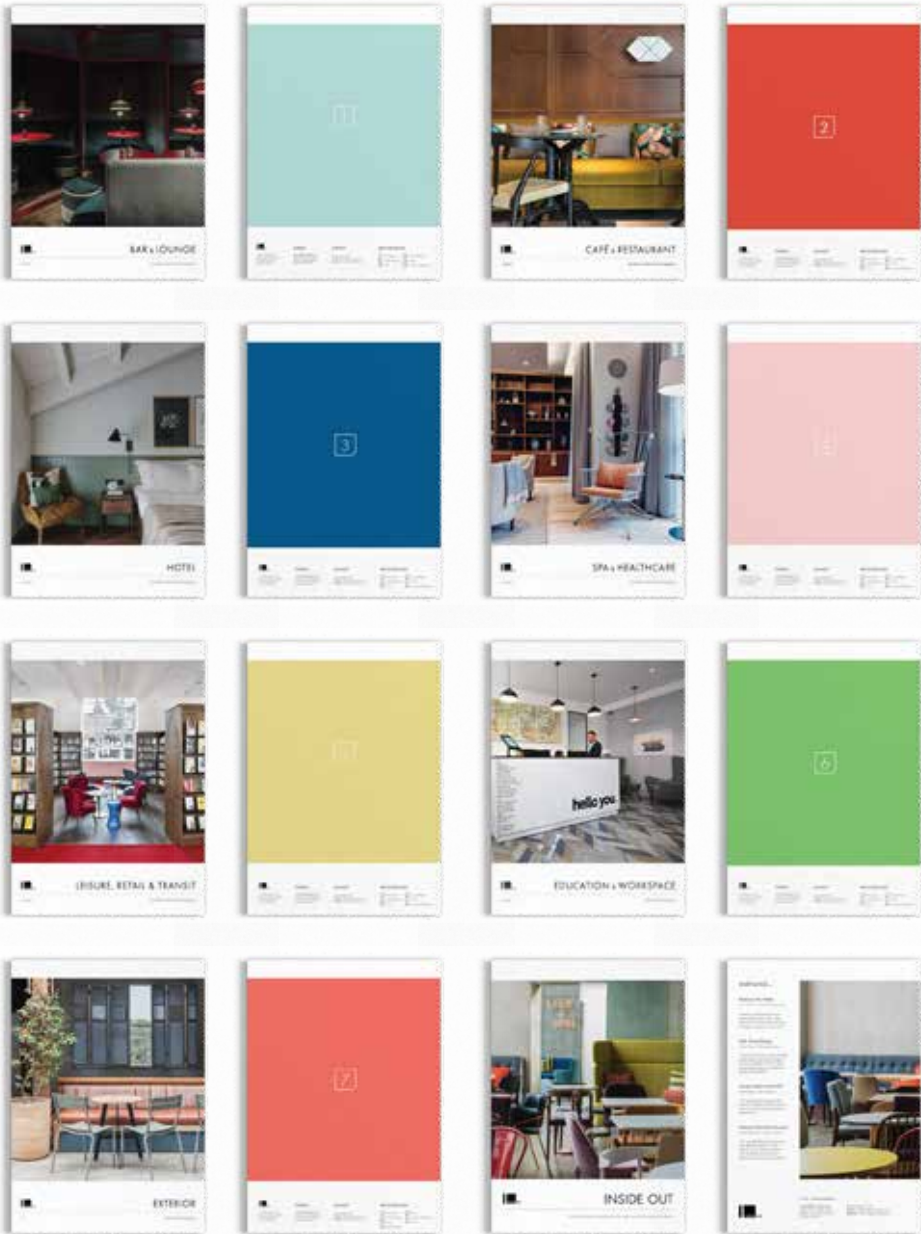
email: mail@insideoutcontracts.com

sales: +44 (0)208 305 3130

production: +44 (0)208 305 3136

design: +44 (0)208 305 3139

bespoke // our brochure collection



To see our full range of products and projects please enquire about our brochure collection ready for download via our website www.insideoutcontracts.com.

testimonials...

Radisson Blu Hotels

Alan Marshall – Director of Operations

“Working with Inside Out has delivered fantastic results. They have proven to be a creative and intelligent company to work with.”

Park Grove Design

Carly Gordon - Managing Director

“A joy to work with and consistently good quality. The broad range of furniture available works for both our budget projects as well as the higher end schemes.”

National Maritime Museum

Sonia Davin-Smith - Events Executive

“We are delighted by the services provided by Inside Out. Their friendly and professional advice and assistance was crucial in delivering the project successfully.”



contact | how to reach us

Head Office & Showroom:
Inside Out Contracts Limited,
Building 16, 42 Creek Road,
London, SE8 3FN

Tel: 020 8305 3130
E-mail: mail@insideoutcontracts.com
Website: www.insideoutcontracts.com

