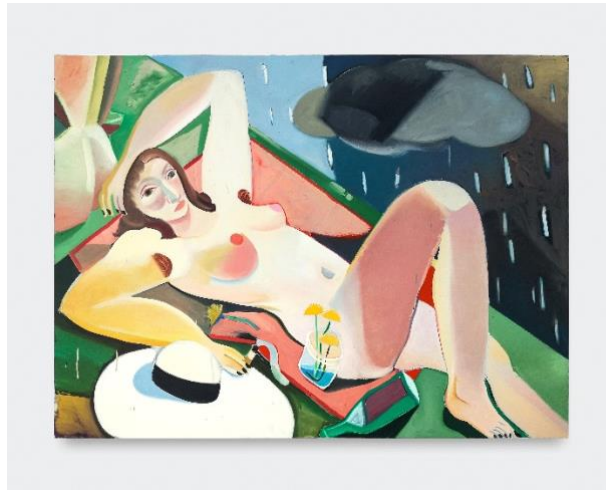


CHART

CHART Announces the Full Programme for its 2021 Edition



Images (L-R): Andreas Eriksson, *Promenad III*, 2021; Danielle Orchard, *Hillside Picnic*, 2020; Franz West, *Paßstück (Adaptive)*, 2007 © Franz West, courtesy Peder Lund. All images courtesy CHART & the artists.

Press Release
11 August 2021

CHART 2021
Kunsthall Charlottenborg, Nyhavn, 2 1051, Copenhagen, Denmark
26 – 29 August 2021

Press Preview: Thursday 26 August, 11am - 6pm
For press accreditation contact: press@chartartfair.com

CHART, the leading Nordic event for contemporary art, unveils the full programme for its 2021 edition which will take place at Kunsthall Charlottenborg from 26 - 29 August 2021. This year's fair will include 26 galleries, 11 artist-run and alternative exhibition spaces, one Book Fair, and a host of talks, installations, performances, and concerts.

“Following a year like no other, we look forward to bringing together exhibitors, professionals, and art enthusiasts in Copenhagen once again for a celebration of the Nordic art scene. Our programme this year makes a special effort to bring together the arts community – a need that is more urgent than ever in the industry. This is the moment to forge new alliances and find new sustainable ways to strengthen and develop the art scene,” says *director of CHART, Nanna Hjortenber*g.

Find more information on the 2021 programme and exhibitors at this year's fair on [CHART's website](https://www.chartartfair.com).

Highlights from CHART Art Fair 2021

The 2021 fair will include presentations by 26 leading Nordic contemporary art galleries, as well as 11 artist-run and alternative gallery spaces as part of this year's new *Experimental* section. Showcasing work by both emerging and internationally established artists, and spanning the realms of photography,

painting, video, sculpture, performance and more, the fair will present works by more than 100 artists in the historic halls of Kunsthal Charlottenborg.

Highlights of this year's fair include: a presentation of painting and sculptural works by artists **Ida Ekblad**, **Paul McCarthy**, **Franz West**, and **Roni Horn** inspired by Constantin Brâncuși's iconic *Vue d'Atelier* (1927) presented by **Peder Lund** (NO) and an exhibition of new watercolours by **Olafur Eliasson** for **i8 Gallery** (IS). **Andersen's** (DK) will dedicate their presentation to works by performance artists **Esben Weile Kjær**, **Lilibeth Cuenca Rasmussen**, **Christian Falsnaes** and **Nicholas Grafia**, exploring the crossover between performance, sculpture, and interaction.

An immersive installation of curtains and chairs by **Lap-See Lam** will be on view at **Galerie Nordenhake** (SE), whilst **Cecilia Hillström Gallery** (SE) will showcase an immersive video installation by **Anna-Karin Rasmusson**. Further artwork highlights include a 6-metre-high hanging sculpture by **Bella Rune** and a series of large-scale sculptures by **Sandra Mujinga**.

Discover CHART's New Book Fair

CHART will introduce its inaugural Book Fair, showcasing the work of 27 leading independent specialist art publishers presenting the best of the art book scene and printed matter community in the Nordic region. *The Aftermath of a Garden Party*, a special project by artist **Loji Höskuldsson** in collaboration with the Danish design brand HAY for CHART, will create the setting for an extensive programme of talks, book signings and debates during the run of the Book Fair.

A Curated Series of Talks Exploring the Future of the Art World

CHART will present a series of talks which will dissect and discuss the future of a reconnected art world post-pandemic. Talk participants from the international art scene include **Tessa Praun** (Magasin III), **Janne Sirén** (Buffalo AKG Art Museum), and curator **Fatoş Üstek**. World-renowned architects **Shohei Shigematsu** (OMA) and **Bjarke Ingels** (BIG) will discuss building museums for the future, in a talk moderated by editor-in-chief **Robert Thiemann** (Frame Magazine).

In addition, a series of live, in-person artist talks will introduce a deeper understanding of the artistic practice of some of the leading artists working across the Nordic art scene. Highlights include: a discussion on painting between **Mamma Andersson** and **Tal R**, and talks by artists **Janaina Tschäpe**, **Vibeke Tandberg**, **Bella Rune**, **Lap-See Lam**, and **Andreas Eriksson**.

A Series of Performances, Music & Installations

Artworks by artists **Mille Kalsmose** and **Hannah Toticki** will be installed in the courtyards at Kunsthal Charlottenborg. The courtyard will also feature a social stage designed by Swedish designer **Fredrik Paulsen** which will host a series of talks, performances and music over the weekend, including *Two Fools and a Pole*, a new performance developed for CHART 2021 by artist duo **Hesselholdt & Mejlvang**. The stage will also play host to *Midnight Confessions with Friends: The CHART Sessions*, a series of intimate acoustic concerts by some of Copenhagen's leading musicians led by **Josephine Philip & Hannah Schneider**, and the first concert in Denmark by Jockum Nördstrøm Band.

Pavilions Designed by Young Architecture Talents

Under the theme Social Architecture five finalist teams of young architects, designers and artists will present temporary pavilions in the courtyards of Charlottenborg. After a year of limited social interaction, the designs explore new and innovative ways of sharing social experiences. The finalists were chosen by an international jury consisting of **Bjarke Ingels**, founder and partner at BIG; **Shohei Shigematsu**, partner at OMA; artist, **Nina Beier**; designer, **Sabine Marcelis**; **Simon Lamunière**, Director of OPEN HOUSE in Geneva; and **David Zahle**, partner at BIG.

The pavilions will host a selection of Copenhagen's gastronomic entrepreneurs such as the innovative craft distillery, *Copenhagen Distillery*; the Danish social-oriented brewing company, *People Like Us*; the urban farm, *Øens Have*; the organic winery, *Vinhanen*; Head Chef at the Michelin-starred restaurant *Geranium* Will King-Smith; and Copenhagen's first oyster bar, *Rouge Oysters*.

Strong Museum Partnerships

To further strengthen relations to art institutions and museums following CHART's curated online programme in June, which connected international curators directly to Nordic galleries and artists, CHART has developed a series of collaborations with local museums such as SMK - National Gallery of Denmark, Louisiana Museum of Modern Art, and Den Frie Centre of Contemporary Art. For this year's edition of the fair, CHART's international museum partner is the Buffalo AKG Art Museum in New York. The partnership aims to build and strengthen relations between the Nordics and North America. On the opening day of the fair, a separate talk and press conference will further unveil the ambitious new curatorial initiative envisioned by the Buffalo AKG.

Artsy

Again this year, CHART continues their close partnership with Artsy, the largest global online marketplace for buying, selling and discovering art by leading artists. As CHART's online Marketplace Partner, Artsy will provide a unique opportunity for exhibiting galleries to promote their virtual booths showcasing their artists' artworks to Artsy's global audience. Collectors can experience CHART on Artsy to discover artists, save favorite works, view works on their home walls using Artsy's AR mobile tool and directly purchase work from galleries at the click of a button.

Stay up to date with news about CHART and its new editorial platform via CHART's website and social media channels: www.chartartfair.com / [@chartartfair](https://twitter.com/chartartfair)

CHART 2021 Exhibitors

Andersen's (DK), Galleri Andersson/Sandström (SE), Galerie Anhava (FI), BERG Contemporary (IS), Galleri Bo Bjerggaard (DK), BORCH Editions (DK/DE), Cecilia Hillström Gallery (SE), Croy Nielsen (AT), Etage Projects (DK), Galerie Forsblom (FI), Gether Contemporary (DK), Golsa (NO), Galleria Heino (FI), Helsinki Contemporary (FI), Hverfisgallerí (IS), i8 Gallery (IS), Galleri Magnus Karlsson (SE), Martin Asbæk Gallery (DK), Galerie Nordenhake (SE), OSL contemporary (NO), Peder Lund (NO), Persons Projects (DE/FI), Gallery Steinsland Berliner (SE), SPECTA (DK), Galleri Susanne Ottesen (DK), V1 Gallery (DK).

Experimental

Bonamatic (DK), C.C.C. (DK), Galleri Cora Hillebrand (SE), henProjects (SE), JIR SANDEL (DK), Kunstplass Contemporary Art [Oslo] (NO), Lagune Ouest (DK), MELK galleri (NO), Monitoimitila O. (FI), NEVVEN (SE), Pula (IS).

CHART Book Fair Publishers

Arvinus + Orfeus (SE), At Last Books (DK), B-B-B Books (SE), Bladr (DK), Charlottenborg Art Books (DK), CHART Exhibitors, Codex Polaris (NO), Ekely (DK), Emancipa(t/ss)ionsfrugten (DK), CULT PUMP (DK), Disko Bay (DK), Heavy Books (NO), Hour Projects (DK), hurricane Publishing (DK), Kunsthall Oslo (NO), Lodret Vandret (DK), Multinational Enterprises (NO/DE), Museum Jorn (DK), Northing/Kinakaal (NO/CH), Plethora Magazine (DK), Really Simple Syndication Press (DK), Rooftop Press (FI), Space Poetry (DK), Strandberg Publishing (DK), Thoughts Of Me Press (DK), Timglaset (SE), Woodpecker Projects (SE).

Notes to Editors

About CHART

CHART is the leading Nordic art event and a new editorial platform. We bring together dedicated individuals and inspiring professionals to impact the future of the arts community in the Nordics and beyond.

We present an art fair with the leading galleries in the region, young talent programmes, an art book fair and a vast live programme of talks, performances, films, music, as well as ongoing editorial content. Building on Copenhagen's strongholds of art, design, and architecture, we explore artistic crossovers and bring the arts community together in all its diversity.

CHART is located at Charlottenborg, home of The Royal Danish Academy of Fine Arts and Kunsthal Charlottenborg, in the heart of Copenhagen, and was founded in 2013 by five Copenhagen-based galleries: Galleri Susanne Ottesen, Galleri Bo Bjerggaard, V1 Gallery, Andersen's, and David Risley Gallery. In August 2021 six business and cultural profiles joined the board: business leader, Annette Sadoli; Director of Trackman, Klaus Eldrup-Jørgensen; CEO of Henning Larsen Architects, Mette Kynne; entrepreneur and former Minister, Tommy Ahlers; Museum Director, Kirse Junge-Stevnsborg; and lawyer, Knud Foldschack. Going forward CHART transforms into a business-driven, social-economic foundation.

Contact

Denmark & the Nordics:
Beate Bernhoft, CHART
beate@chartartfair.com
+45 40 81 65 65

International Media:
Elise Hammond, Sutton
elise@suttoncomms.com
+44 (0) 78 8973 3757