

# Doro Sara

## Manual

English



---

<b>Parts and descriptions</b> .....	<b>4</b>
<b>Description of functions</b> .....	<b>6</b>
Activate the alarm .....	6
Alarm transmitter .....	6
Alarm receivers .....	6
Other functions .....	6
<b>Installation</b> .....	<b>6</b>
Connection .....	6
Telephone connection, with ADSL modem .....	7
<b>Programming</b> .....	<b>8</b>
Program the radio triggers .....	8
Check the radio coverage .....	8
Check the functionality .....	8
<b>Radio trigger</b> .....	<b>8</b>
<b>General information</b> .....	<b>9</b>
<b>Maintenance</b> .....	<b>9</b>
Cleaning .....	9
Replace the carephone batteries .....	9
Replace the radio trigger batteries .....	9
Technical data .....	9
Correct disposal of batteries in this product .....	11

**Note!** All illustrations are for illustrative purposes only and may not accurately depict the actual device. The items supplied with your unit might vary depending on the software and accessories available in your region or offered by your service provider. You can obtain additional accessories from your local Doro dealer. The supplied accessories provide the best performance for your unit.

## READ FIRST: SAFETY INFORMATION



Always read and follow the safety information accompanied by this symbol.

- Protect the unit from moisture. Rain/snowfall, moisture and all types of liquid can contain substances that corrode the electronic circuits.
- The carephone should be placed on a hard surface to avoid blocking the microphone (positioned underneath of the carephone).
- Battery replacement may be performed only by authorized persons in accordance with the instructions in service manual. Only use recommended battery type as stated in the service manual.
- Only use recommended power supply as stated in the service manual.
- The power supply can be used as a disconnecting device. The wall socket shall be installed near the equipment and shall be easily accessible.
- AUX-port: Wired installation must be performed only by authorized persons in accordance with the instructions in the service manual.

---

### CAUTION

Risk of explosion if battery is replaced by an incorrect type. Dispose of used batteries according to the instructions.

---

### Important Information

All systems using radio and network communication are subject to interference beyond the user's control.

Products from Doro are designed to minimise the impact of such interference.

Nevertheless, the user must be aware that system components can be subjected to interference or other influences that may cause malfunction.

It is therefore important to regularly check that every part of the system works in all areas, especially radio communications. Contact your supplier immediately in case of any suspected malfunction.

Users should pay particular attention to the risk of disruption from products which communicate using the same or adjacent frequencies.

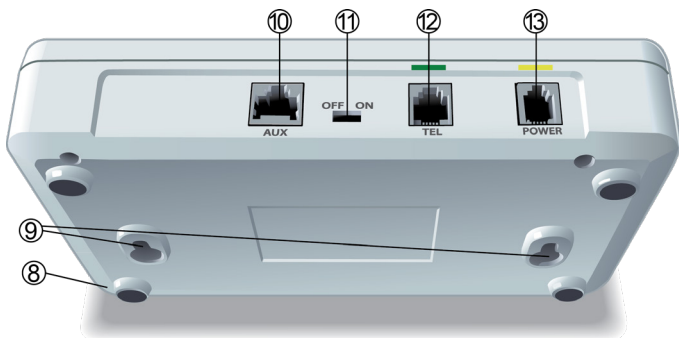
For further information, please contact your supplier or refer to the service manual or the documentation at [www.doro.com/care](http://www.doro.com/care).

## PARTS AND DESCRIPTIONS



1	<b>On</b>	Steady Green	Mains power ok
		Flashing Green	Radio programming mode
		Off	Mains failure
2	<b>Alarm</b>	Slow Flashing Red	Calling Alarm Centre
		Fast Flashing Red	Connected to Alarm Centre
3	<b>Error</b>	Flashing Red	Telephone Line Fault (flashing begins 1hr after line fault starts)
		Off	Normal operation
4	<b>Loudspeaker</b>		
5	<b>Red button</b>	Alarm button	Activates the alarm
		Steady Red	Mains Power OK
		Off	Mains Failure
6	<b>Yellow button</b>	Function button	
7	<b>Green button</b>	Cancel button	Stops the alarm
8	<b>Microphone</b>		

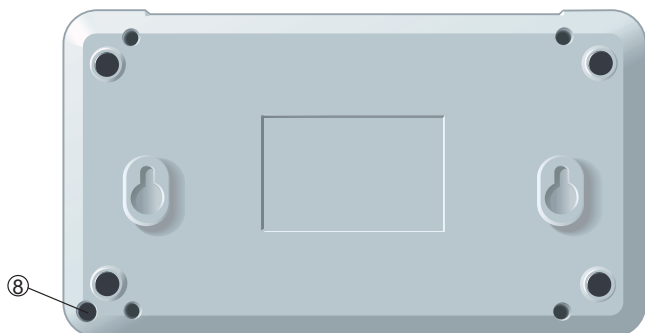
**Note!** The yellow button has no function upon delivery but is programmable for special functions.



The following can be found on the back of the unit.

- 8 Microphone
- 9 Holes for wall mounting
- 10 AUX input and output
- 11 OFF and ON switch
- 12 TEL connection to telephone network
- 13 POWER supply/programming cable

**Note!** The carephone should be placed on a hard surface to avoid blocking the microphone (item number 8).



## DESCRIPTION OF FUNCTIONS

Sara is a practical, well-designed, mains-operated carephone that is ideal for use in the individual's own home. The radio trigger is adapted for use with Doro Sara.

### Activate the alarm

**The assistance alarm can be activated:**

1. by pressing the button on a radio trigger.
2. by pressing the red button on Doro Sara.

On activation, the Doro Sara carephone calls an alarm receiver to summon help.

Other alarm types can be activated using accessories. There is a possibility to attach up to two different wired and nine different wireless triggers.

**Tip:** If an alarm is activated accidentally, it can be reset by pressing the green button on Doro Sara.

### Alarm transmitter

Nine radio transmitters can be programmed with the carephone, e.g. a radio trigger, smoke detector, motion detector, etc.

In the event of an alarm from a radio transmitter, the battery status of the radio transmitter is tested. The radio trigger has automatic battery monitoring.

### Alarm receivers

Up to six alarm receivers can be programmed. The alarm is identified using an alarm code which is programmed into the carephone. An alarm placed to a private receiver is identified by a recorded voice ID. The person receiving the alarm can then speak directly with the person raising the alarm and take appropriate action.

### Other functions

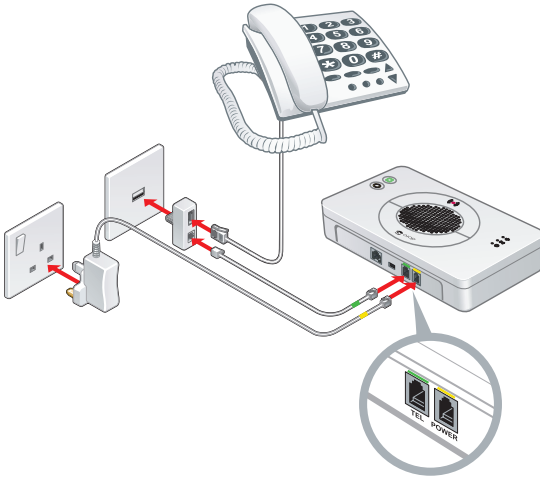
Additional functions can be activated or changed by programming – refer to the service manual or contact your supplier for further information.

## INSTALLATION

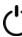
### Connection

The carephone is very easy to install, connection to the telephone network is via the telephone lead/adapter.

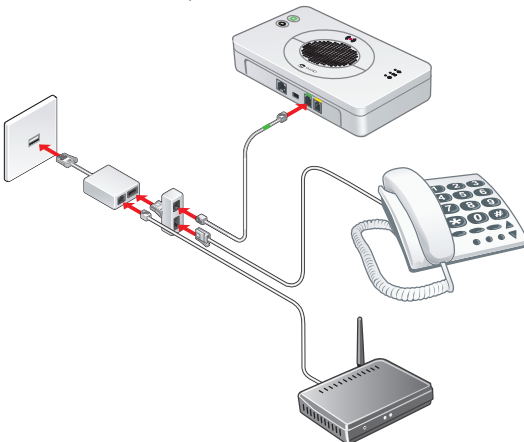
The carephone should be connected to the master telephone socket in the home in order for it to continue to work even if a telephone receiver is left off the hook or is faulty. The master socket is normally the one closest to the entrance door – for further advice, contact your supplier.



Power is supplied via the power supply from a wall socket.

1. Disconnect the existing telephone from the telephone jack and connect the telephone lead/adaptor to the jack. Connect the telephone lead to the **TEL** socket on the carephone.
2. Connect the power supply to the wall socket and the power supply lead to the **POWER** socket on the carephone.
3. Turn the power switch to the **ON** position. Check that the  indicator lamp has a steady green light.
4. Connect the existing telephone to the intermediate plug. Lift the receiver and check that you can hear the tone.
5. Carry out a test alarm from the carephone.

## Telephone connection, with ADSL modem



## PROGRAMMING



The carephone's telephone numbers, alarm codes and settings are programmed via a computer, using the programming cable and the Doro software or via telephone.

For help with programming and information about other programming tools, please refer to the carephone's service manual or contact your supplier.

In some cases, the carephone can be delivered ready-programmed by the supplier.

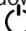
### Program the radio triggers

Up to nine radio triggers or other radio-alarm transmitters, e.g. smoke detectors, can be programmed to the carephone.

1. Hold down the green button for more than four seconds until  light starts to flash green.
2. Press the radio trigger. Once the carephone has received the radio signal, you will hear a distinct tone signal.
3. Confirm by pressing the red button  on the carephone.

### Check the radio coverage

Always check the function after installation and programming.

- Hold down the green button for more than four seconds until the green  light starts to flash.
- Press the radio trigger. The built-in speaker will produce a tone signal on successful reception. Repeat this in all areas where the alarm needs to operate.

### Check the functionality

Always check the function after installation and programming. Test alarms should be done regularly and in a way that secures the whole alarm chain from radio transmitter to alarm receiver.

## RADIO TRIGGER

The radio trigger uses two-way radio communication, this means that when Doro Sara receives an alarm from the radio trigger, it will send an acknowledgement of the receipt. This is shown on the radio trigger by the indicator light that changes from green to red to green. If the radio trigger doesn't get any acknowledgement the alarm will be repeated.

Accessories included: wristband, neckband and "easy-press" accessory. The accessories are attached to the alarm button with a simple click-in action.



## GENERAL INFORMATION

- If the telephone line is not working, no alarm can be sent.
- The carephone should be connected to the master telephone socket in the home.
- In order for an alarm to be sent, at least one alarm receiver/response centre needs to be programmed.
- The carephone must not come into contact with water or any other liquid.
- Used batteries should be disposed of in an environmentally-responsible manner.

## MAINTENANCE

### Cleaning

The carephone and portable alarm trigger should be cleaned using a slightly damp cloth. Solvents should not be used when cleaning.

### Replace the carephone batteries

Battery should be replaced a.s.a.p after battery alarm or within three years, please refer to the service manual or contact your supplier.

### Replace the radio trigger batteries

To replace the radio trigger batteries, please refer to the service manual or contact your supplier.

## Technical data

### Carephone Doro Sara

<b>Dimensions:</b>	114 x 200 x 36 mm (LxWxH)
<b>Power supply:</b>	Enclosed power adapter
<b>Backup batteries:</b>	4.8V NiMH battery pack
<b>Backup time:</b>	Up to two days
<b>Inputs:</b>	Two opto isolated
<b>Output:</b>	Relay output, potential-free , max 2A
<b>Communication:</b>	Analogue telephone line
<b>Radio frequency:</b>	869.2125 MHz
<b>Radio receiver class:</b>	1*
<b>Number of radio transmitters:</b>	Up to 9

\*Refers to radio module "C1", type 9340.

## Environment

This product is intended for indoor use in a normal residential environment.

<b>Temperature:</b>	Operating temperature +5°C to +35°C
<b>Humidity:</b>	0% to 75% relative humidity (non-condensed)
<b>Environmental class:</b>	1 (EG-I)
<b>Equipment class:</b>	Class 1 radio equipment

### Radio receiver parameters:

<b>Max. usable sensitivity:</b>	-113dBm;
<b>Average usable sensitivity:</b>	ver. 28,7dBuV/m, hor.27,0dBuV/m;
<b>Adjacent channel selectivity:</b>	-26,2dBm/-28,2dBm;
<b>Intermodulation rejection:</b>	-36dBm/-37dBm;
<b>Spurious response rejection:</b>	-30dBm;
<b>Blocking or desensitisation:</b>	>-16dBm

Doro Sara can also be equipped with radio module type 9320, which allows maximum security and includes receipt of transmission, automatic transmission repeat, power control and frequency control. See order information for indicating which radio module the unit is equipped with.

## DECLARATION OF CONFORMITY

Hereby Doro declares that the radio equipment type, social alarm, is in compliance with Directive 2014/53/EU (RED) and 2011/65/EC (RoHS). The full text of the EU declaration of conformity is available at the following internet address: [www.doro.com/dofc](http://www.doro.com/dofc)

## **CORRECT DISPOSAL OF THIS PRODUCT**

(Waste Electrical & Electronic Equipment)

(Applicable in countries with separate collection systems)

This marking on the product, accessories or manual indicates that the product and its electronic accessories (e.g. charger, headset, USB cable) should not be disposed of with other household waste. To prevent possible harm to the environment or human health from uncontrolled waste disposal, please separate these items from other types of waste and recycle them responsibly to promote the sustainable reuse of material resources.

Household users should contact either the retailer where they purchased this product, or their local government office, for details of where and how they can take these items for environmentally safe recycling. Business users should contact their supplier and check the terms and conditions of the purchase contract. This product and its electronic accessories should not be mixed with other commercial wastes for disposal. This product is RoHS compliant.

### **Correct disposal of batteries in this product**

(Applicable in countries with separate collection systems)

The marking on the battery, manual or packaging indicates that the battery in this product should not be disposed of with other household waste. Where marked, the chemical symbols Hg, Cd or Pb indicate that the battery contains mercury, cadmium or lead above the reference levels in EC Directive 2006/66.



© 2017 Copyright Doro AB  
Manual Doro Sara  
English

Version 2.1  
[www.doro.com](http://www.doro.com)

