





**Bear Canyon Trail Re-Route Project**

**Inset Map Section 1**

---

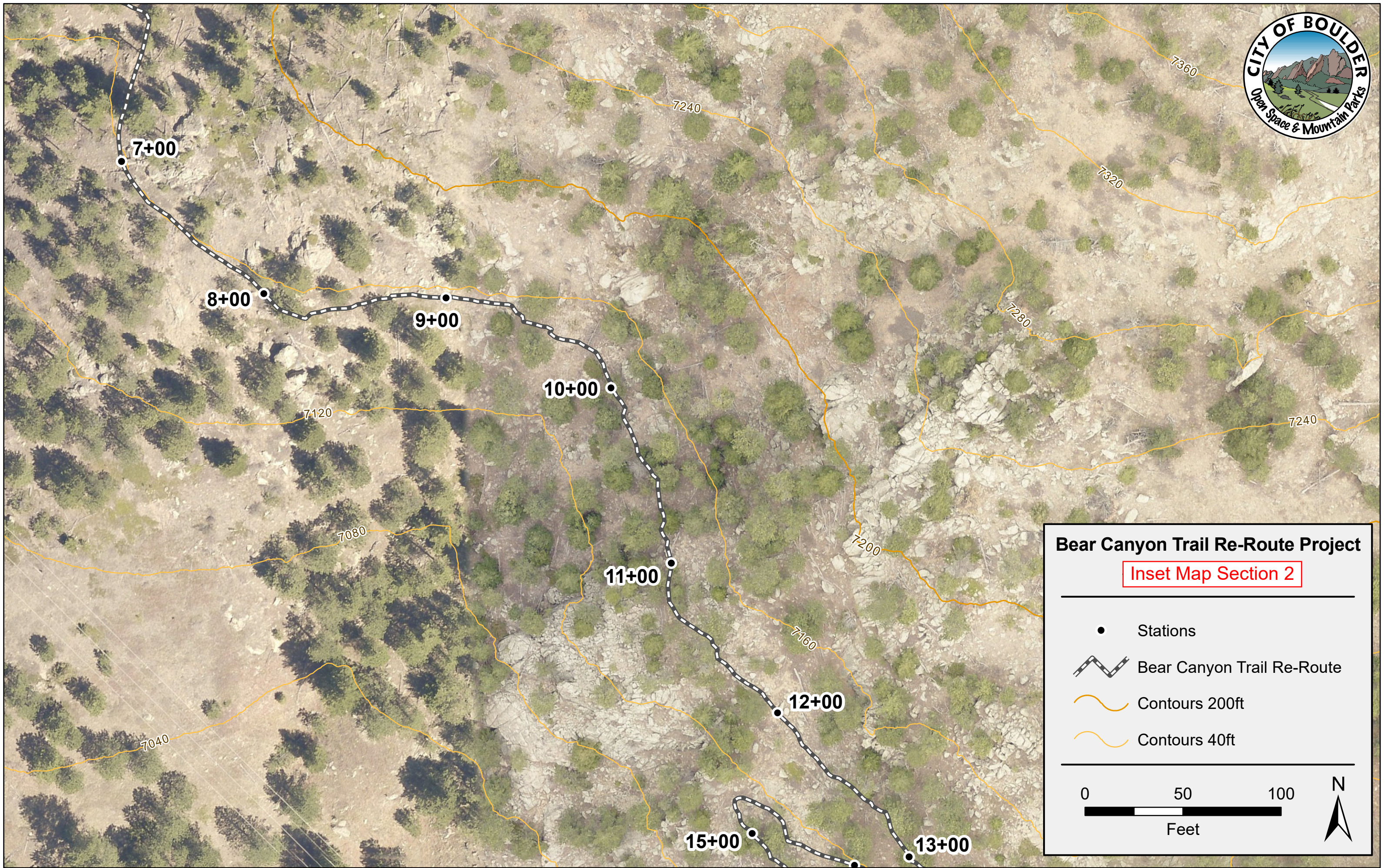
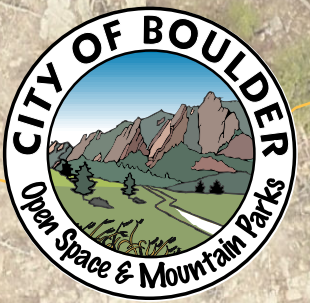
- Stations
- Bear Canyon Trail Re-Route
- Close and Restore
- Hiking Trail
- Contours 200ft
- Contours 40ft

---

0 50 100  
Feet

N







**Bear Canyon Trail Re-Route Project**


**Inset Map Section 2**

---

● Stations

 Bear Canyon Trail Re-Route

 Contours 200ft

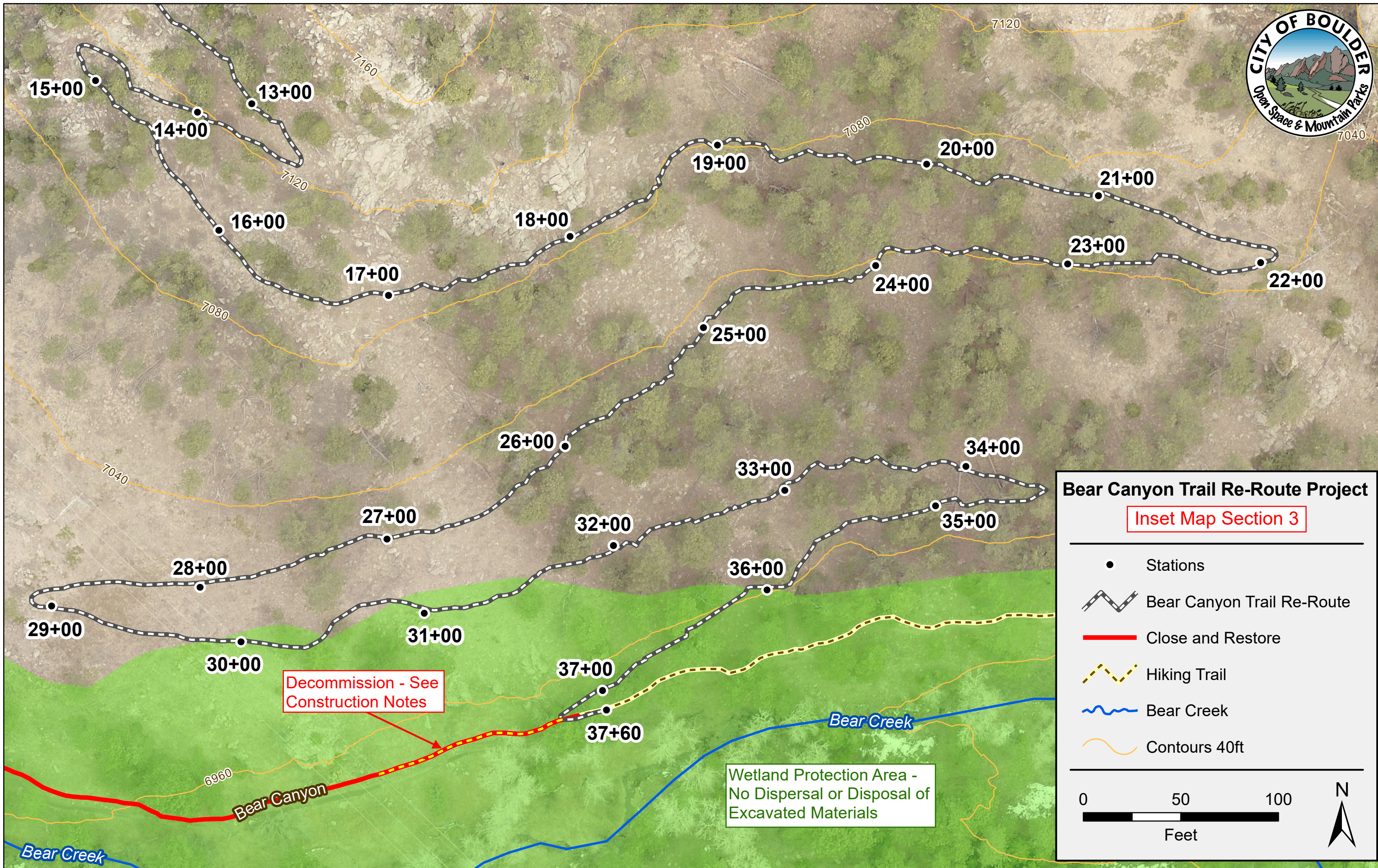
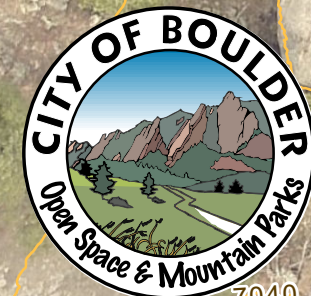
 Contours 40ft

---

0 50 100  
Feet

N







CITY OF BOULDER, OSMP

TRAIL CONSTRUCTION NOTES

PRINT DATE: Aug 11, 2020

PROJECT: Upper Bear Canyon Trail Re-Route

STA. START		STA. END		Whisker Color	WIDTH (FT)		HEIGHT (FT)		LENGTH (FT)		QTY		Abrv	Item	# Units Designed	UOM	Notes	Progress Notes	Item Compl?
Design	As-Built	Design	As-Built		Design	As-Built	Design	As-Built	Design	As-Built	Design	As-Built							
														#N/A	#N/A	#N/A			
+0		37+60			2.5								fbt	Construct New Trail, 3-ft Full Bench	3760	LF	Allowances for occasional 2-ft width due to barriers (boulders, bedrock, trees, etc) - see project specifications for more information.		
+0													spc	Special Instructions - See Notes	SEE NOTES	N/A	Decommission old trail: --FIRST 100 ft, est. 4 ft width: See detail 911.60 A "Contour Restoration". 1) Pull/remove any berm; 2) then use excavated soil and rock to fully re-contour trail to match natural slope; 3) then seed; 4) then cover with duff; 5) then cover with logs, sticks/slash. --SECOND 100 ft, est. 4 ft width: See detail 911.60 C "Scarification", plus addition of soil fill. 1) Pull/remove any berm; 2) then use excavated soil and rock to partially re-contour trail (about half of what is used for full-recontour in first 100 ft); 3) then seed; 4) then cover with duff; 5) then cover with logs, sticks/slash.		
+0		1+00											spc	Special Instructions - See Notes	SEE NOTES	N/A	Note - no 0+00 stake. First whisker is at 1+00. (One blue whisker at top of rock outcrop at 0+40.) Notify OSMP Project Manager who will set 10-ft spacing whiskers prior to construction.		
+0		+8									3		sst	Stone Step		3EA			
+0		+8					2						srw	Stone Retaining Wall	16	SF	Taper wall with steps - lowest height of wall is est. 1 ft at 1st/lowest step; highest part of wall is est. 2 ft at 3rd/highest step.		
+8		+23					5						rr	Rip-Rap	75	SF	Rip-rap POSSIBLY needed: Depends on restoration of old trail - if fill soil can fully re-contour/fill the old trail's cut-slope (including backslope), then rip-rap is likely not needed; otherwise stabilize downhill side of trail with rip-rap.		
+50											1		rt	Remove Tree	1	EA	5-inch diameter.		
+70											1		rt	Remove Tree	1	EA	4-inch diameter.		
+70											1		grhp	Grade Reversal High Point	1	EA			
+70											1		gar	Stone Gargoyle	1	EA	2-3CF. Place on downhill edge of grade rev. high point.		



CITY OF BOULDER, OSMP

TRAIL CONSTRUCTION NOTES

PRINT DATE: Aug 11, 2020

PROJECT: Upper Bear Canyon Trail Re-Route

STA. START		STA. END		Whisker Color	WIDTH (FT)		HEIGHT (FT)		LENGTH (FT)		QTY		Abrv	Item	# Units Designed	UOM	Notes	Progress Notes	Item Compl?
Design	As-Built	Design	As-Built		Design	As-Built	Design	As-Built	Design	As-Built	Design	As-Built							
1+00		1+20					1.5						srw	Stone Retaining Wall	30	SF			
1+08											1		rt	Remove Tree	1	EA	POSSIBLE remove tree. 10-inch diameter.		
1+10											1		grlp	Grade Reversal Low Point	1	EA			
1+57											1		rt	Remove Tree	1	EA	8-inch diameter, dead snag.		
1+70											1		grhp	Grade Reversal High Point	1	EA	1+90 is corresponding low point.		
1+70											1		gar	Stone Gargoyle	1	EA	2-3CF. Place on downhill edge of grade rev. high point.		
1+90											1		grlp	Grade Reversal Low Point	1	EA	1+70 is corresponding high point.		
2+04		2+17					1						srw	Stone Retaining Wall	13	SF			
2+24											1		sst	Stone Step	1	EA			
2+25		2+45					1.5						srw	Stone Retaining Wall	30	SF	2-ft high at center, tapering to 1-ft high at both ends.		
2+65		2+77					1						srw	Stone Retaining Wall	12	SF			
2+80		2+84									3		sst	Stone Step	3	EA			
2+82											2		gar	Stone Gargoyle	2	EA	Place 1 gargoyle (2-3CF each) on each side of the staircase.		
2+84		2+86					1						srw	Stone Retaining Wall	2	SF	Crib downhill side of trail at top step - tie wall into top step.		
3+26											1		rt	Remove Tree	1	EA	4-inch diameter, on uphill side of trail.		



CITY OF BOULDER, OSMP

TRAIL CONSTRUCTION NOTES

PRINT DATE: Aug 11, 2020

PROJECT: Upper Bear Canyon Trail Re-Route

STA. START		STA. END		Whisker Color	WIDTH (FT)		HEIGHT (FT)		LENGTH (FT)		QTY		Abrv	Item	# Units Designed	UOM	Notes	Progress Notes	Item Compl?
Design	As-Built	Design	As-Built		Design	As-Built	Design	As-Built	Design	As-Built	Design	As-Built							
3+26											1		grhp	Grade Reversal High Point	1	EA			
3+45											1		grlp	Grade Reversal Low Point	1	EA			
3+45		3+55									2		rt	Remove Tree	2	EA	Remove 3-inch and 4-inch diameter trees (2).		
4+15													spc	Special Instructions - See Notes	SEE NOTES	N/A	Do not disturb stone cairn approx. 12' uphill. Do not disturb log remains of cabin approx. 150 ft up the ridgeline.		
4+25											1		rt	Remove Tree	1	EA	8" diameter, on uphill side.		
4+25		4+60									15		brx	Bedrock Excavation	15	CF			
4+25		4+60											spc	Special Instructions - See Notes	SEE NOTES	N/A	Determine if stone retaining walls at 4+33 and 4+45 are needed, or if tread can be cut through here.		
4+33		4+43					1						srw	Stone Retaining Wall	10	SF			
4+45		4+60					1						srw	Stone Retaining Wall	15	SF			
4+45											1		rt	Remove Tree	1	EA	10" diameter, uphill side.		
4+63											1		sst	Stone Step	1	EA			
4+69											3		brx	Bedrock Excavation	3	CF			
5+50		5+54									3		brx	Bedrock Excavation	3	CF			
5+58		5+62									3		brx	Bedrock Excavation	3	CF			
5+63											1		grlp	Grade Reversal Low Point	1	EA			



CITY OF BOULDER, OSMP

TRAIL CONSTRUCTION NOTES

PRINT DATE: Aug 11, 2020

PROJECT: Upper Bear Canyon Trail Re-Route

STA. START		STA. END		Whisker Color	WIDTH (FT)		HEIGHT (FT)		LENGTH (FT)		QTY		Abrv	Item	# Units		UOM	Notes	Progress Notes	Item Compl?
Design	As-Built	Design	As-Built		Design	As-Built	Design	As-Built	Design	As-Built	Design	As-Built			Designed					
5+75											1		grhp	Grade Reversal High Point	1	EA				
6+22											1		gar	Stone Gargoyle	1	EA	3CF. Place on downhill side of trail.			
6+22													spc	Special Instructions - See Notes	SEE NOTES	N/A	Note - swale crossing low point.			
6+25													spc	Special Instructions - See Notes	SEE NOTES	N/A	Remove stump 12" deep and fill/compact with mineral soil. (typ.)			
6+40											1		grhp	Grade Reversal High Point	1	EA	Ensure that trail grade rises 2-3% over 6+22 swale crossing low point.			
6+60		6+65									6		brx	Bedrock Excavation	6	CF				
6+68		6+75									5		sst	Stone Step	5	EA				
6+68											1		rt	Remove Tree	1	EA	4" diameter. (Leave the 8" diameter tree.)			
6+75											1		gar	Stone Gargoyle	1	EA	2CF, uphill side.			
6+84		6+86				1							srw	Stone Retaining Wall	2	SF	Tie into bedrock at 6+86.			
6+86		6+89											spc	Special Instructions - See Notes	SEE NOTES	N/A	Use bedrock as tread surface.			
6+88											1		gar	Stone Gargoyle	1	EA	4CF. Place on downhill side to guide trail users over bedrock.			
7+88											1		rt	Remove Tree	1	EA	8" diameter, on downhill side.			
7+90		8+00									5		brx	Bedrock Excavation	5	CF				
9+05		9+15									6		brx	Bedrock Excavation	6	CF				



CITY OF BOULDER, OSMP

TRAIL CONSTRUCTION NOTES

PRINT DATE: Aug 11, 2020

PROJECT: Upper Bear Canyon Trail Re-Route

STA. START		STA. END		Whisker Color	WIDTH (FT)		HEIGHT (FT)		LENGTH (FT)		QTY		Abrv	Item	# Units Designed	UOM	Notes	Progress Notes	Item Compl?
Design	As-Built	Design	As-Built		Design	As-Built	Design	As-Built	Design	As-Built	Design	As-Built							
9+25		9+40									10		sst	Stone Step	10	EA	Build as staircase.		
9+48		9+60									7		sst	Stone Step	7	EA	Build as staircase.		
9+80													spc	Special Instructions - See Notes	SEE NOTES	N/A	Note - swale crossing low point.		
10+00		10+12					1						srw	Stone Retaining Wall	12	SF	Possible 1-tier stone retaining wall and/or 1-2 steps. Evaluate with OSMP Project Manager when woody debris is removed.		
10+12		10+17											spc	Special Instructions - See Notes	SEE NOTES	N/A	Remove soil/debris from bedrock - use bedrock as tread surface.		
10+15		10+20									15		brx	Bedrock Excavation	15	CF	Break/remove boulder in backslope.		
10+17		10+28					1.5						srw	Stone Retaining Wall	16.5	SF			
10+30											1		rt	Remove Tree	1	EA	8" diameter, downhill side.		
10+38													spc	Special Instructions - See Notes	SEE NOTES	N/A	Remove 12-inch log.		
10+60		10+68					1						srw	Stone Retaining Wall	8	SF	Tie in with rock at 10+68.		
10+64											1		rt	Remove Tree	1	EA	4" diameter, uphill side.		
10+69		10+86					2						srw	Stone Retaining Wall	17	SF	Incorporate existing stable boulders into the wall. (Qty. reduced 50% to account for existing boulders.) Tie in with existing boulders on both ends.		
10+90		11+00					2						srw	Stone Retaining Wall	20	SF	3' height at 10+90, tapering to 1' height at 11+00.		
11+20													spc	Special Instructions - See Notes	SEE NOTES	N/A	FYI - cliff overlook site.		
11+49		11+54					1						srw	Stone Retaining Wall	5	SF	Taper from 6-inch height at 11+49 up to 1.5-ft height at 11+54.		



STA. START		STA. END		Whisker Color	WIDTH (FT)		HEIGHT (FT)		LENGTH (FT)		QTY		Abrv	Item	# Units		UOM	Notes	Progress Notes	Item Compl?
Design	As-Built	Design	As-Built		Design	As-Built	Design	As-Built	Design	As-Built	Design	As-Built			Designed					
11+54		11+57											spc	Special Instructions - See Notes	SEE NOTES	N/A		Use bedrock as tread surface.		
11+57		11+61									3		sst	Stone Step	3	EA		Build as staircase.		
11+68		11+83					1.5						srw	Stone Retaining Wall	22.5	SF				
11+84		11+91											spc	Special Instructions - See Notes	SEE NOTES	N/A		Thru-cut small knoll, est. 10" grade reduction.		
12+00		12+50									10		brx	Bedrock Excavation	10	CF				
12+00		12+80											spc	Special Instructions - See Notes	SEE NOTES	N/A		Remove several sapling trees.		
12+35		12+39									10		brx	Bedrock Excavation	10	CF		Remove large boulder on uphill side.		
12+51		12+53											spc	Special Instructions - See Notes	SEE NOTES	N/A		Use bedrock as tread surface.		
12+57		12+60					1						srw	Stone Retaining Wall	3	SF				
12+60		12+63											spc	Special Instructions - See Notes	SEE NOTES	N/A		Use existing flat rock as tread and step.		
13+00											1		grlp	Grade Reversal Low Point	1	EA				
13+18											1		grhp	Grade Reversal High Point	1	EA				
13+18											1		gar	Stone Gargoyle	1	EA		2-3CF. Place on downhill edge of grade rev. high point.		
13+19		13+24									3		sst	Stone Step	3	EA				
13+29		13+35					1						srw	Stone Retaining Wall	6	SF				
13+39		13+47									6		sst	Stone Step	6	EA		Build as staircase.		



CITY OF BOULDER, OSMP

TRAIL CONSTRUCTION NOTES

PRINT DATE: Aug 11, 2020

PROJECT: Upper Bear Canyon Trail Re-Route

STA. START		STA. END		Whisker Color	WIDTH (FT)		HEIGHT (FT)		LENGTH (FT)		QTY		Abrv	Item	# Units Designed	UOM	Notes	Progress Notes	Item Compl?
Design	As-Built	Design	As-Built		Design	As-Built	Design	As-Built	Design	As-Built	Design	As-Built							
13+39		13+45					1.5						srb	Stacked Rock Barrier	9	SF	Build rock rubble wall around outer edge of steps to steer trail users around switchback.		
13+46		13+54					1						srw	Stone Retaining Wall	8	SF			
13+71											1		grlp	Grade Reversal Low Point	1	EA			
13+80											1		grhp	Grade Reversal High Point	1	EA			
13+80											1		gar	Stone Gargoyle	1	EA	2-3CF. Place on downhill edge of grade rev. high point.		
14+30											1		grlp	Grade Reversal Low Point	1	EA			
14+35		14+45											spc	Special Instructions - See Notes	SEE NOTES	N/A	Remove 3 boulders.		
14+40											1		grhp	Grade Reversal High Point	1	EA			
14+50		14+56					1						srw	Stone Retaining Wall	6	SF	Tie in with existing boulder at 14+56.		
14+65		14+87									10		sst	Stone Step	10	EA	Build as staircase where feasible. Crib edges as-needed.		
14+65		14+87					1						srw	Stone Retaining Wall	22	SF	Stone retaining wall for cribbing on edges of steps if needed (see item above).		
14+90		14+94									3		brx	Bedrock Excavation	3	CF	Remove embedded bedrock on uphill side.		
15+06		15+21					2.5						srw	Stone Retaining Wall	37.5	SF	Tie in with existing boulder at 15+21.		
15+21		15+24											spc	Special Instructions - See Notes	SEE NOTES	N/A	Use existing 2 steps in rock as steps up.		
15+29		15+32									2		sst	Stone Step	2	EA			



CITY OF BOULDER, OSMP

TRAIL CONSTRUCTION NOTES

PRINT DATE: Aug 11, 2020

PROJECT: Upper Bear Canyon Trail Re-Route

STA. START		STA. END		Whisker Color	WIDTH (FT)		HEIGHT (FT)		LENGTH (FT)		QTY		Abrv	Item	# Units Designed	UOM	Notes	Progress Notes	Item Compl?
Design	As-Built	Design	As-Built		Design	As-Built	Design	As-Built	Design	As-Built	Design	As-Built							
15+35		15+45					1						srw	Stone Retaining Wall	10	SF	Tie in with existing boulders on both ends.		
15+46		15+49									2		sst	Stone Step	2	EA			
15+59		15+62									3		brx	Bedrock Excavation	3	CF	Remove boulder in backslope.		
16+00		16+70									30		brx	Bedrock Excavation	30	CF			
16+05													spc	Special Instructions - See Notes	SEE NOTES	N/A	Remove stump 12" deep and fill/compact with mineral soil. (typ.)		
16+17		16+21					1						srw	Stone Retaining Wall	4	SF	Tie in with existing boulders on both ends.		
16+27		16+45					1.5						srw	Stone Retaining Wall	27	SF	Incorporate existing stable boulders into the wall. Tie in with existing boulders on both ends.		
16+71		16+74									2		sst	Stone Step	2	EA			
17+00		19+00									40		brx	Bedrock Excavation	40	CF			
17+16		17+40					2.5						srw	Stone Retaining Wall	60	SF	Possible retaining wall - build if and where needed to achieve relatively uniform trail grade and width, and/or to raise tread above bedrock.		
17+40		17+50					2						srw	Stone Retaining Wall	20	SF	Tie in with existing rock at 17+50.		
17+50		17+58											spc	Special Instructions - See Notes	SEE NOTES	N/A	Thru-cut small knoll, est. 1-ft grade reduction.		
17+60		17+70					1.5						srw	Stone Retaining Wall	15	SF	Tie in with existing rock at 17+60.		
17+76		17+80					2.5						srw	Stone Retaining Wall	10	SF	Tie in with existing rock on both ends.		
17+83		17+87					1.5						srw	Stone Retaining Wall	6	SF	Tie in with existing rock on both ends.		



CITY OF BOULDER, OSMP

TRAIL CONSTRUCTION NOTES

PRINT DATE: Aug 11, 2020

PROJECT: Upper Bear Canyon Trail Re-Route

STA. START		STA. END		Whisker Color	WIDTH (FT)		HEIGHT (FT)		LENGTH (FT)		QTY		Abrv	Item	# Units Designed	UOM	Notes	Progress Notes	Item Compl?
Design	As-Built	Design	As-Built		Design	As-Built	Design	As-Built	Design	As-Built	Design	As-Built							
17+88													spc	Special Instructions - See Notes	SEE NOTES	N/A	Use existing bedrock/boulder as step.		
17+90		17+94									3		sst	Stone Step	3	EA	Build as staircase.		
18+05		18+19					1						srw	Stone Retaining Wall	14	SF			
18+20		18+23									2		sst	Stone Step	2	EA	Stack steps.		
18+24		18+28					1						srw	Stone Retaining Wall	4	SF	Tie in with step at 18+23 and boulder at 18+28.		
18+31		18+40					2.5						srw	Stone Retaining Wall	22.5	SF			
18+47		18+55									14		brx	Bedrock Excavation	14	CF	Remove 2 boulders.		
18+56		18+65					2						srw	Stone Retaining Wall	18	SF			
18+70		18+80					1						srw	Stone Retaining Wall	10	SF			
18+85													spc	Special Instructions - See Notes	SEE NOTES	N/A	Note - low point of swale crossing.		
19+10											2		rt	Remove Tree	2	EA	2 trees on uphill side: 8" and 5".		
19+58		19+62					1						srw	Stone Retaining Wall	4	SF	Connect to step.		
19+62		19+66									3		sst	Stone Step	3	EA			
19+71		19+74									2		sst	Stone Step	2	EA			
20+00											1		grlp	Grade Reversal Low Point	1	EA			



CITY OF BOULDER, OSMP

TRAIL CONSTRUCTION NOTES

PRINT DATE: Aug 11, 2020

PROJECT: Upper Bear Canyon Trail Re-Route

STA. START		STA. END		Whisker Color	WIDTH (FT)		HEIGHT (FT)		LENGTH (FT)		QTY		Abrv	Item	# Units Designed	UOM	Notes	Progress Notes	Item Compl?
Design	As-Built	Design	As-Built		Design	As-Built	Design	As-Built	Design	As-Built	Design	As-Built							
20+25											1		grhp	Grade Reversal High Point	1	EA			
20+52		20+60									3		brx	Bedrock Excavation	3	CF			
20+78		20+86									5		brx	Bedrock Excavation	5	CF			
20+89		20+91									2		sst	Stone Step	2	EA			
20+91		21+00											spc	Special Instructions - See Notes	SEE NOTES	N/A	Reduce grade 8-10".		
21+60											1		grlp	Grade Reversal Low Point	1	EA			
21+60		21+90									30		lb	Log Barrier	30	LF	Place between switchback legs to prevent shortcutting.		
21+61													spc	Special Instructions - See Notes	SEE NOTES	N/A	Remove stump 12" deep and fill/compact with mineral soil. (typ.)		
21+70											1		grhp	Grade Reversal High Point	1	EA			
21+70											1		gar	Stone Gargoyle	1	EA	Place on downhill side of grade rev. high point.		
21+78		21+82									2		sst	Stone Step	2	EA			
21+84		21+88					1						srw	Stone Retaining Wall	4	SF			
21+88		21+96									8		sst	Stone Step	8	EA	Build as staircase.		
22+09		22+15					1						srw	Stone Retaining Wall	6	SF			
22+10		22+15									2		brx	Bedrock Excavation	2	CF			



CITY OF BOULDER, OSMP

TRAIL CONSTRUCTION NOTES

PRINT DATE: Aug 11, 2020

PROJECT: Upper Bear Canyon Trail Re-Route

STA. START		STA. END		Whisker Color	WIDTH (FT)		HEIGHT (FT)		LENGTH (FT)		QTY		Abrv	Item	# Units Designed	UOM	Notes	Progress Notes	Item Compl?
Design	As-Built	Design	As-Built		Design	As-Built	Design	As-Built	Design	As-Built	Design	As-Built							
22+25		22+40					2						srw	Stone Retaining Wall	30	SF	2-ft average height, but actual height ranges between 1-3' to fit topography.		
23+00											1		grlp	Grade Reversal Low Point	1	EA			
23+20											1		grhp	Grade Reversal High Point	1	EA			
23+20											1		gar	Stone Gargoyle	1	EA	3CF. Place on downhill edge of grade rev. high point.		
23+33											1		rt	Remove Tree	1	EA	8" dia, on uphill side.		
23+38											1		rt	Remove Tree	1	EA	8" dia, on uphill side.		
23+60													spc	Special Instructions - See Notes	SEE NOTES	N/A	Remove log - 16" diameter.		
23+85													spc	Special Instructions - See Notes	SEE NOTES	N/A	Note - swale crossing low point.		
24+00											1		gar	Stone Gargoyle	1	EA	3CF. Place on downhill side of trail.		
24+25		24+40					1.5						srw	Stone Retaining Wall	22.5	SF	Below tree - build if needed.		
24+45		24+55					1.5						srw	Stone Retaining Wall	15	SF	Below tree.		
24+65													spc	Special Instructions - See Notes	SEE NOTES	N/A	Note - swale crossing low point.		
24+90		24+96					1.5						srw	Stone Retaining Wall	9	SF	Tie in with existing rock at 24+96.		
24+96		25+00											spc	Special Instructions - See Notes	SEE NOTES	N/A	Use existing boulder/bedrock as tread/critical edge.		
24+99		25+05					1.5						srw	Stone Retaining Wall	9	SF	Tie in with existing rock at 24+99.		



CITY OF BOULDER, OSMP

TRAIL CONSTRUCTION NOTES

PRINT DATE: Aug 11, 2020

PROJECT: Upper Bear Canyon Trail Re-Route

STA. START		STA. END		Whisker Color	WIDTH (FT)		HEIGHT (FT)		LENGTH (FT)		QTY		Abrv	Item	# Units Designed	UOM	Notes	Progress Notes	Item Compl?
Design	As-Built	Design	As-Built		Design	As-Built	Design	As-Built	Design	As-Built	Design	As-Built							
25+40											1		grlp	Grade Reversal Low Point	1	EA			
25+41		25+50					1						srw	Stone Retaining Wall	9	SF			
25+46											3		brx	Bedrock Excavation	3	CF			
25+52											1		grhp	Grade Reversal High Point	1	EA			
25+65											5		brx	Bedrock Excavation	5	CF			
25+96		25+97					1.5						srw	Stone Retaining Wall	1.5	SF	Between 2 boulders.		
26+35		26+50									5		brx	Bedrock Excavation	5	CF	Possible.		
26+60		26+70									2		brx	Bedrock Excavation	2	CF	Possible.		
27+05		27+10									2		brx	Bedrock Excavation	2	CF	Possible.		
28+30											1		grlp	Grade Reversal Low Point	1	EA			
28+40											1		grhp	Grade Reversal High Point	1	EA			
28+40											1		gar	Stone Gargoyle	1	EA	2-3CF. Place on downhill edge of grade rev. high point.		
28+84		28+90									4		sst	Stone Step	4	EA	Build as staircase.		
28+84		28+92					1.5						srb	Stacked Rock Barrier	12	SF	Rubble wall around outside edge of stairs, to steer trail users around the switchback.		
28+95		28+99					1						srw	Stone Retaining Wall	4	SF	Anchor to existing bedrock on both ends.		



CITY OF BOULDER, OSMP

TRAIL CONSTRUCTION NOTES

PRINT DATE: Aug 11, 2020

PROJECT: Upper Bear Canyon Trail Re-Route

STA. START		STA. END		Whisker Color	WIDTH (FT)		HEIGHT (FT)		LENGTH (FT)		QTY		Abrv	Item	# Units Designed	UOM	Notes	Progress Notes	Item Compl?
Design	As-Built	Design	As-Built		Design	As-Built	Design	As-Built	Design	As-Built	Design	As-Built							
28+98		29+15					1.5						srb	Stacked Rock Barrier	25.5	SF	Rubble wall on uphill side - connect to existing bedrock at 28+98. Give it a natural look so it looks like a natural extension of the existing bedrock: use large stone, lichen side facing up/out.		
29+60											1		grlp	Grade Reversal Low Point	1	EA			
29+78											1		grhp	Grade Reversal High Point	1	EA			
29+78											1		gar	Stone Gargoyle	1	EA	3CF. Place on downhill side of trail.		
30+35		30+50					2						srw	Stone Retaining Wall	30	SF			
30+35		30+50									5		brx	Bedrock Excavation	5	CF			
31+25		31+40					2						srw	Stone Retaining Wall	30	SF			
31+72		31+78					1.5						srw	Stone Retaining Wall	9	SF	Tie into bedrock on both ends.		
32+00											1		grlp	Grade Reversal Low Point	1	EA			
32+10											1		grhp	Grade Reversal High Point	1	EA			
32+10											1		gar	Stone Gargoyle	1	EA	2-3CF. Place on downhill edge of grade rev. high point.		
32+15		32+19					1						srw	Stone Retaining Wall	4	SF	Tie into rock at 32+19.		
32+30		32+50									5		brx	Bedrock Excavation	5	CF			
33+25													spc	Special Instructions - See Notes	SEE NOTES	N/A	Note - swale crossing low point.		
33+85													spc	Special Instructions - See Notes	SEE NOTES	N/A	Note - swale crossing low point.		



CITY OF BOULDER, OSMP

TRAIL CONSTRUCTION NOTES

PRINT DATE: Aug 11, 2020

PROJECT: Upper Bear Canyon Trail Re-Route

STA. START		STA. END		Whisker Color	WIDTH (FT)		HEIGHT (FT)		LENGTH (FT)		QTY		Abrv	Item	# Units Designed	UOM	Notes	Progress Notes	Item Compl?
Design	As-Built	Design	As-Built		Design	As-Built	Design	As-Built	Design	As-Built	Design	As-Built							
33+95											1		gar	Stone Gargoyle	1	EA	3CF. Place on downhill side of trail. Ensure that trail grade rises 2-3% higher than 33+85 swale crossing low point.		
34+22											1		rt	Remove Tree	1	EA	Remove 12-inch diameter snag (dead tree) on uphill side. Grub/remove trunk/roots to 18 inches deep and fill/compact with mineral soil. Snag is rotting - hopefully stump/roots will grub out easily.		
34+25		34+29									3		sst	Stone Step	3	EA	Build as staircase.		
34+27											1		gar	Stone Gargoyle	1	EA	4CF. Place on dowhill side of steps.		
34+28		34+37					1						srw	Stone Retaining Wall	9	SF			
34+37		34+45									5		sst	Stone Step	5	EA	Build as staircase.		
34+40											10		lb	Log Barrier	10	LF	Set log parallel to slope (running up/down slope) on outside edge of stairs to help guide people around switchback turn.		
34+41											1		gar	Stone Gargoyle	1	EA	Set 4CF gargoyle stone as anchor at apex (inside corner of steps) of switchback.		
34+45		34+65									20		lb	Log Barrier	20	LF	Set log between switchback legs to prevent shortcutting.		
34+92													spc	Special Instructions - See Notes	SEE NOTES	N/A	Note - swale crossing low point.		
35+44													spc	Special Instructions - See Notes	SEE NOTES	N/A	Note - swale crossing low point. Move boulder to downhill edge of trail - set stable (excavate foundation for it to set in).		
36+10											1		grlp	Grade Reversal Low Point	1	EA			
36+20		37+00											spc	Special Instructions - See Notes	SEE NOTES	N/A	Whiskers are only set at 20-ft intervals. Notify OSMP Project Manager who will set 10-ft spacing whiskers prior to construction.		
36+22											1		grhp	Grade Reversal High Point	1	EA			
37+24		37+27									2		sst	Stone Step	2	EA			



STA. START		STA. END		Whisker Color	WIDTH (FT)		HEIGHT (FT)		LENGTH (FT)		QTY		Abrv	Item	# Units Designed	UOM	Notes	Progress Notes	Item Compl?
Design	As-Built	Design	As-Built		Design	As-Built	Design	As-Built	Design	As-Built	Design	As-Built							
37+26		37+45					3						srw	Stone Retaining Wall	57	SF	Backwall against existing trail backslope: Est. 1-2 ft height at 37+26, tapering up to 4-ft height at 37+45.		
37+27		37+45											spc	Special Instructions - See Notes	SEE NOTES	N/A	Notify OSMP Project Manager prior to construction to flag out details of this retaining walls, steps, and switchback location.		
37+27		37+45					1.5						srw	Stone Retaining Wall	27	SF	1.5' height at 37+27, tapering down to <1-ft height at 37+45. Wall wraps around/across existing trail between 37+27 to approx. 37+32, connecting to the existing bedrock at 37+27.		
37+30													spc	Special Instructions - See Notes	SEE NOTES	N/A	Decommission old trail, 100-ft: See detail 911.60 A "Contour Restoration". Rip/de-compact existing tread to 3-inch depth. Place soil fill (from adjacent excavations) at approx. 1.5 ft depth (tapering up from existing critical edge towards backslope, or to natural contours). Install seed and erosion control blanket (both provided by OSMP). Cover with duff (1-2 inch layer) and occasional branches (est. 8-10).		
37+45		37+60					1.5						srw	Stone Retaining Wall	22.5	SF	Backwall against existing trail backslope - see rip-rap below for upper section.		
37+45		37+60					2.5						rr	Rip-Rap	37.5	SF	Place rip-rap on backwall (noted above) up to specified height.		
37+45											1		sst	Stone Step	1	EA			
														#N/A	#N/A	#N/A			
TRAIL REPAIR SECTION														#N/A	#N/A	#N/A			
													spc	Special Instructions - See Notes	SEE NOTES	N/A	Notify OSMP Project Manager prior to construction for staking/marketing of the site per the construction items listed below.		
											5		sst	Stone Step	5	EA	Bottom 3 steps with cribbing wall on downhill edge. Upper 2 steps stacked, and leading to bedrock trail section. (OSMP Project Manager will mark specific locations.)		
		+10					1						srw	Stone Retaining Wall	10	SF	Cribbing wall for downhill edge of steps. (OSMP Project Manager will mark specific location.)		
		+8					1.5						srw	Stone Retaining Wall	12	SF	Wall supporting lower portion of eroding slope. (OSMP Project Manager will mark specific location.)		



CITY OF BOULDER, OSMP

## TRAIL CONSTRUCTION NOTES

PRINT DATE: Aug 11, 2020

PROJECT: Upper Bear Canyon Trail Re-Route

[illegible]