



JEFFERSON
COUNTY COLORADO
Open Space

Jeffco Trails Plan

A background graphic of a topographic map with white contour lines on a light gray background, covering the left half of the page.

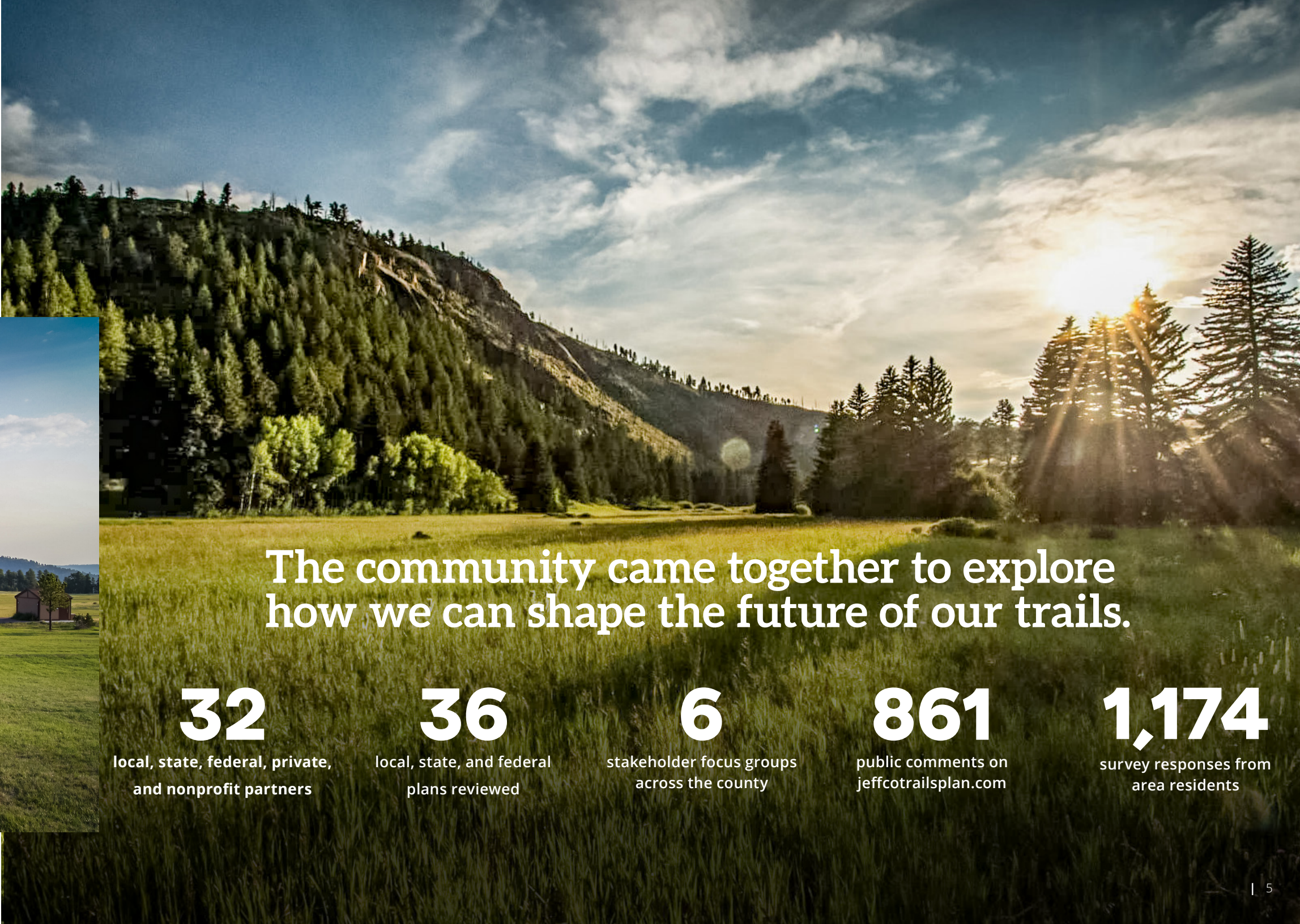
TABLE OF CONTENTS

- 
- A photograph of a mountain landscape. In the foreground, there is a paved path leading through tall grass. To the left of the path, there are trees with bright yellow autumn foliage. In the background, a large mountain rises with a mix of green and brown vegetation. At the peak of the mountain, there are several communication towers. The sky is blue with some light clouds.
1. Community Engagement
 2. The Vision
 3. Community Benefits
 4. Measuring Success
 5. Next Steps

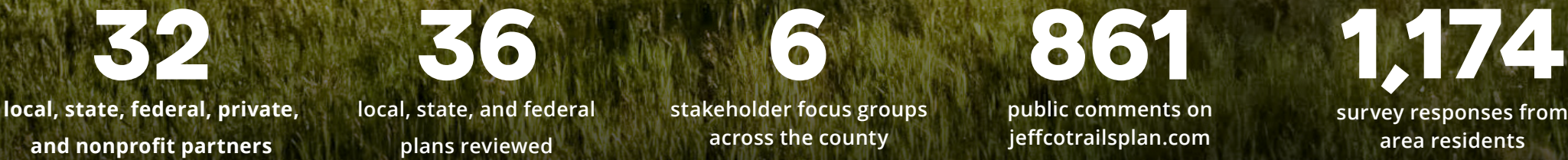
COMMUNITY ENGAGEMENT

The Jeffco Trails Plan explores the path ahead for the future of all trails in Jefferson County. We asked:

How can we improve connections and provide convenient and equitable access to the outdoors and community destinations for every resident and visitor?

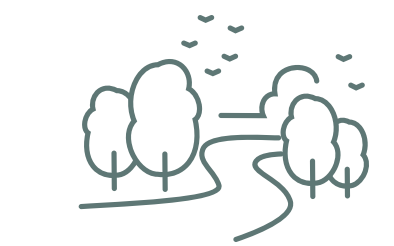


The community came together to explore how we can shape the future of our trails.



Top Public Priorities

WE LEARNED ABOUT THE THREE KEY PRIORITIES OF THE COMMUNITY:



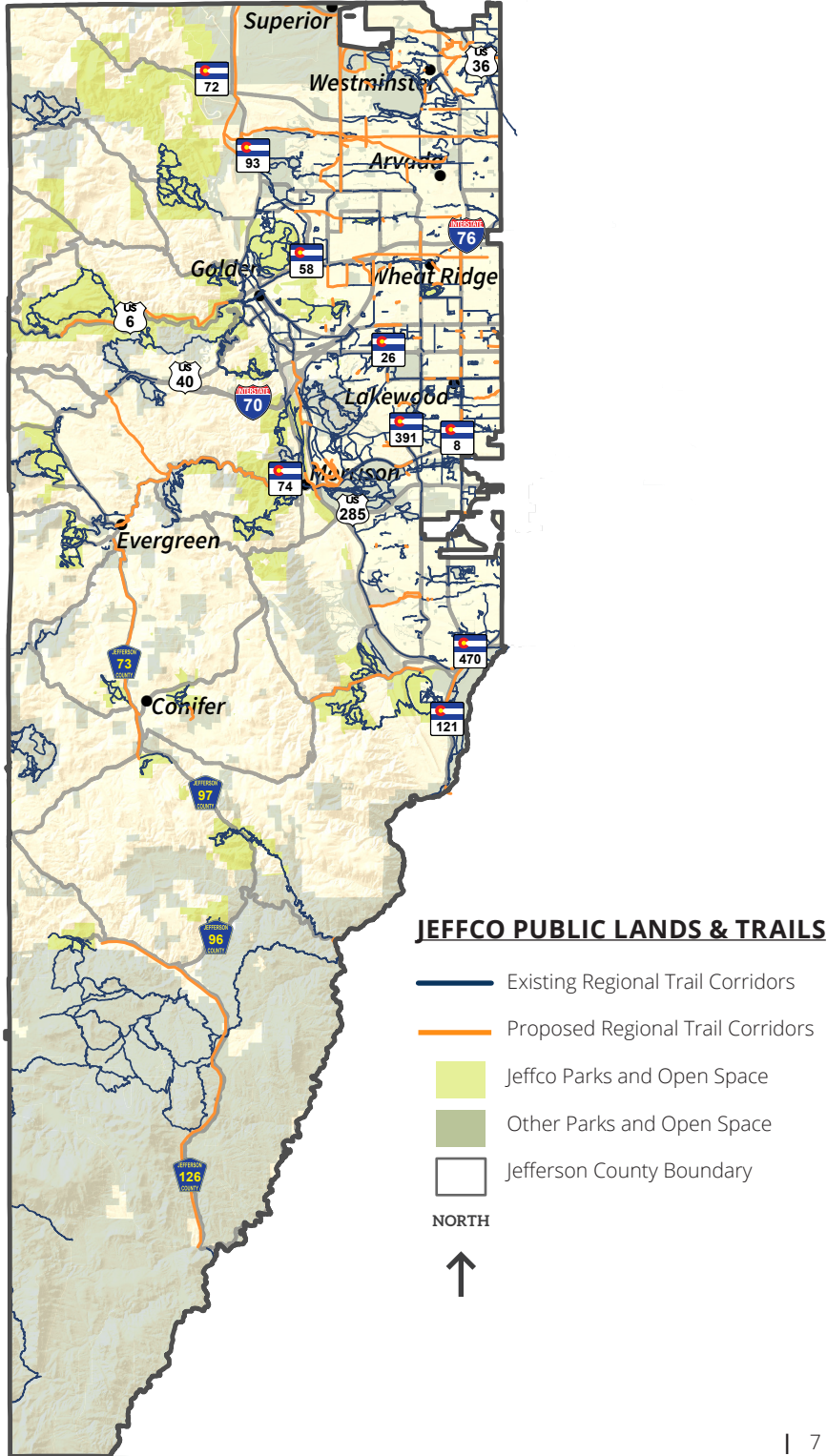
Develop more local trails & paths to area destinations



Create more opportunities to enjoy the outdoors close to home



Increase safety on trails and at trail crossings



THE VISION

These collaborations resulted in an inspiring vision that unites the people, places, and possibilities as an attractive Jefferson County experience with much to discover.

A healthier, engaged community connected by trails

THERE ARE THREE KEY GOALS TO ACCOMPLISH THIS VISION:

- Improve connections across the entire region
- Increase equitable access
- Create safer experiences for everyone



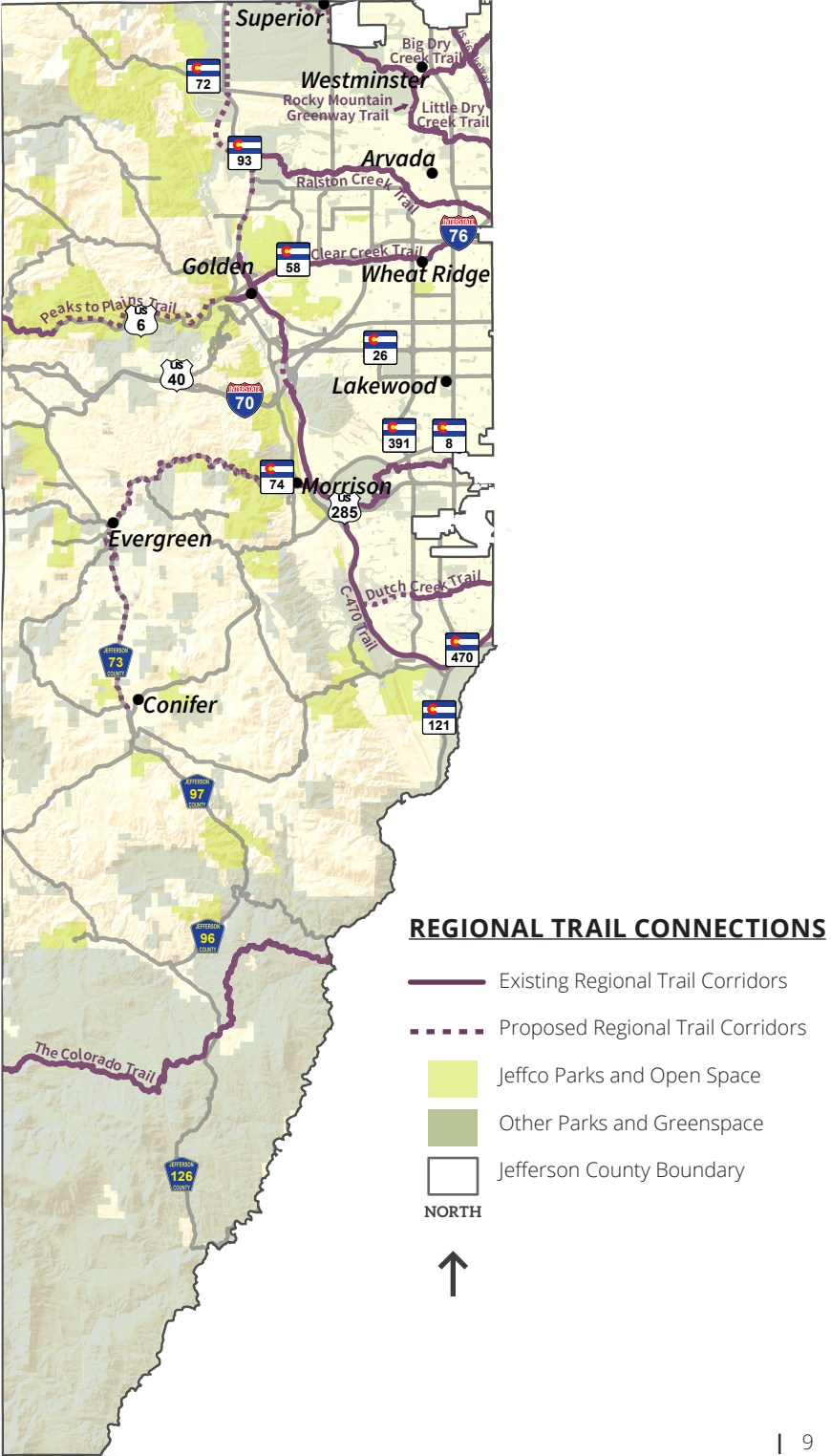
Improve connections across the entire region

A multimodal trail network will connect communities to each other, nearby parks, trails, greenspace, local businesses, and to neighboring trail systems outside of the county.



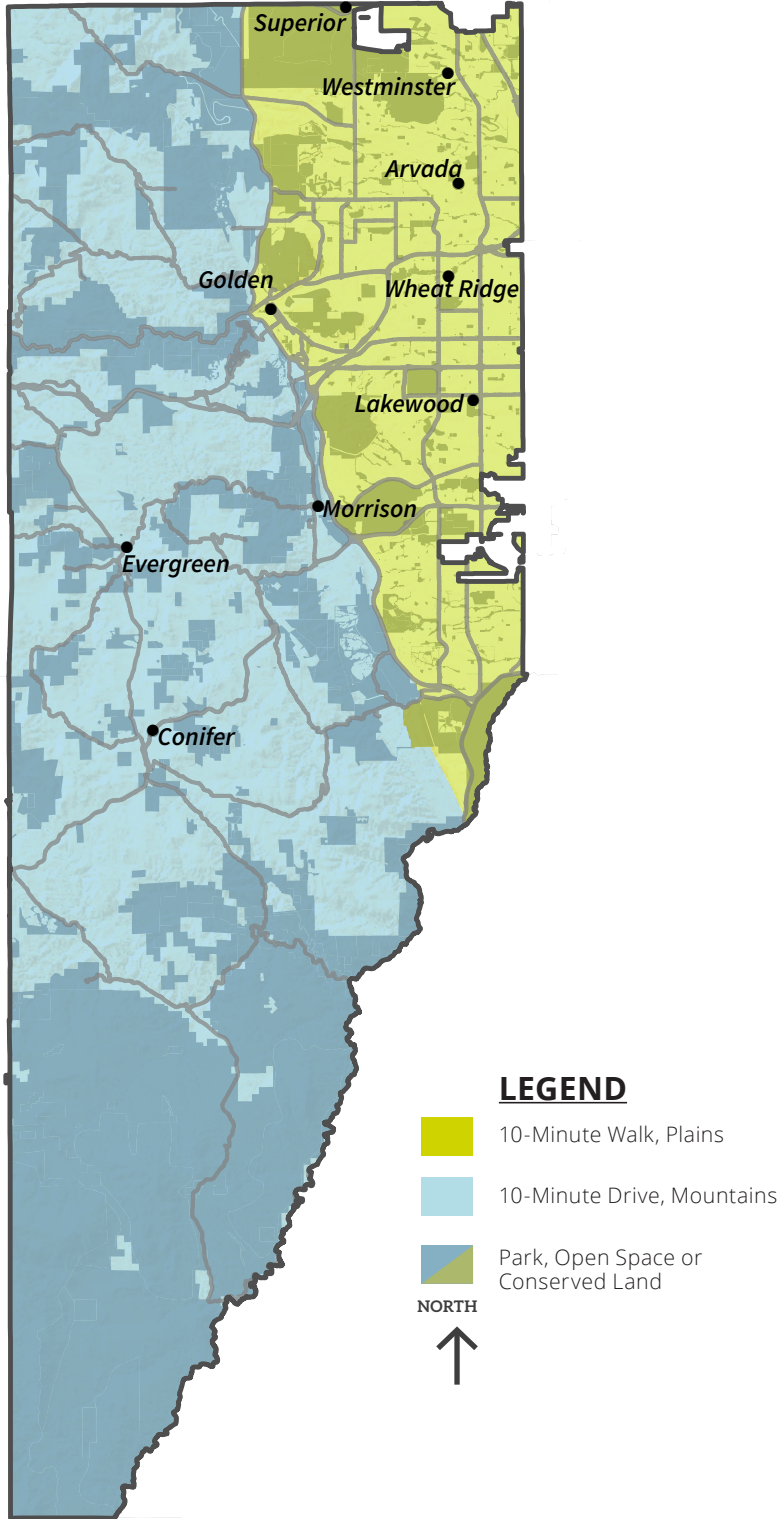
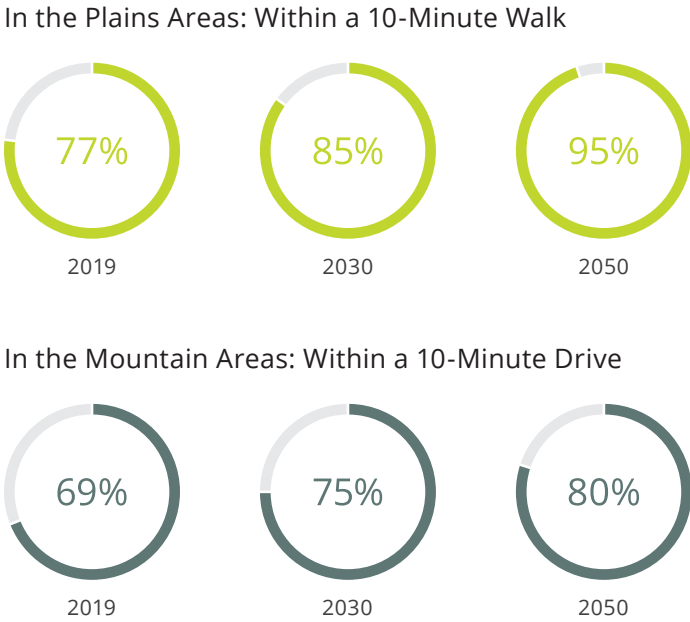
1,100 MILES
of trails by 2030

Bicycling and walking are increasingly desirable means of travel and an integral part of the county transportation system. The Jeffco Trails Plan is an important initiative to improve trail connections to existing and proposed on-street bicycle and pedestrian facilities across the region. Together, the Jeffco Trails Plan and localized planning efforts provide a blueprint to improve bicycle and pedestrian networks through safe, convenient on- and off-street facilities.



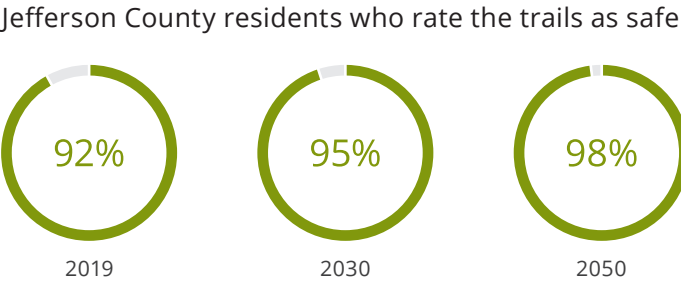
Increase Equitable Access

This goal dovetails with the Jefferson County Conservation Greenprint goal to achieve ‘Easy and Equitable Access’. Specifically, this Plan focuses outside of Jefferson County Open Space Parks to ensure that every resident in Jefferson County has access to a trail or greenspace 10 minutes from their doorstep.



Create safer experiences for everyone

Comfortably accommodating the needs of all visitors so they can enjoy outdoor experiences inclusive of all ages and abilities.



COMMUNITY BENEFITS

A highly connected trail system brings much-needed benefits to the entire community.



Improved Health

Well-connected green spaces are more environmentally resilient and improve the collective mental and physical health of our entire community.



Enhanced Mobility

Improved access to trails and greenspace supports regional goals to increase multimodal transportation options.



Greater Value

Connections to parks, trails, and greenspace provide more opportunities for people to explore local destinations and enjoy the outdoors.

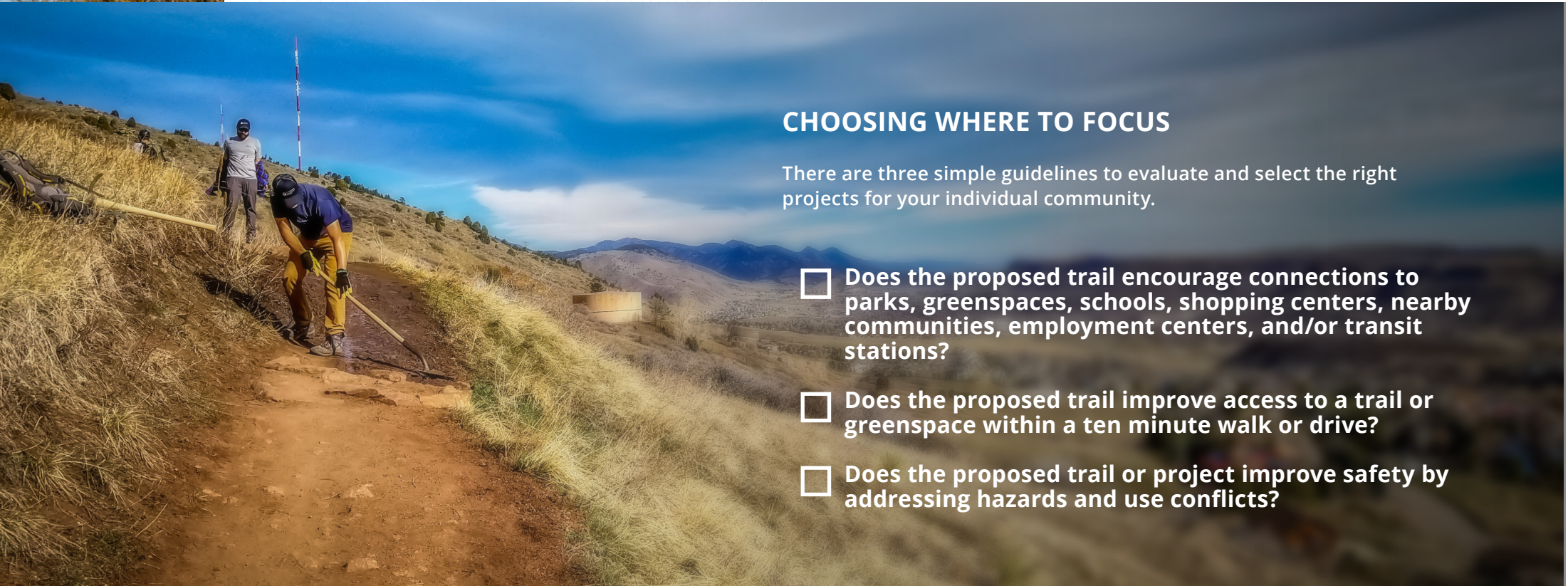


MEASURING SUCCESS

Success requires individual initiative and open collaboration.

The Jeffco Trails Plan provides a comprehensive system for every individual jurisdiction in Jefferson County to assess, plan, and implement their own approach to three different types of trail improvements:

- 1. Enhance existing trails with necessary improvements
- 2. Expand existing trails with new sections and connections
- 3. Create new trails to reach areas of opportunity



CHOOSING WHERE TO FOCUS

There are three simple guidelines to evaluate and select the right projects for your individual community.

- ☐ Does the proposed trail encourage connections to parks, greenspaces, schools, shopping centers, nearby communities, employment centers, and/or transit stations?
- ☐ Does the proposed trail improve access to a trail or greenspace within a ten minute walk or drive?
- ☐ Does the proposed trail or project improve safety by addressing hazards and use conflicts?



NEXT STEPS

**It's an ambitious vision.
Let's work together to connect the County.**

WHAT NOW?

1. Review the proposed trails and planning overview in the Implementation Resources document
2. Use the guidelines to prioritize and execute proposed trails and projects for your community
3. Engage with your neighbors and local leaders to make the Jeffco Trails Plan a reality.

IMPLEMENTATION RESOURCES

The following document provides a look at proposed trail network, detailed metrics, and robust public process that will result in a more connected Jefferson County.



Proposed Trails & Action Guidelines

Explore the delineated trail corridors and recommended guidelines for evaluation, selection, and implementation. The proposed trails and projects listed in this document will be reviewed and updated annually to ensure the highest level of compatibility with the Plan goals.



Conditions & Trends Analysis

Learn more about Jefferson County's trails and greenspaces, including access, safety patterns, and community engagement.





JEFFERSON

COUNTY COLORADO

Open Space