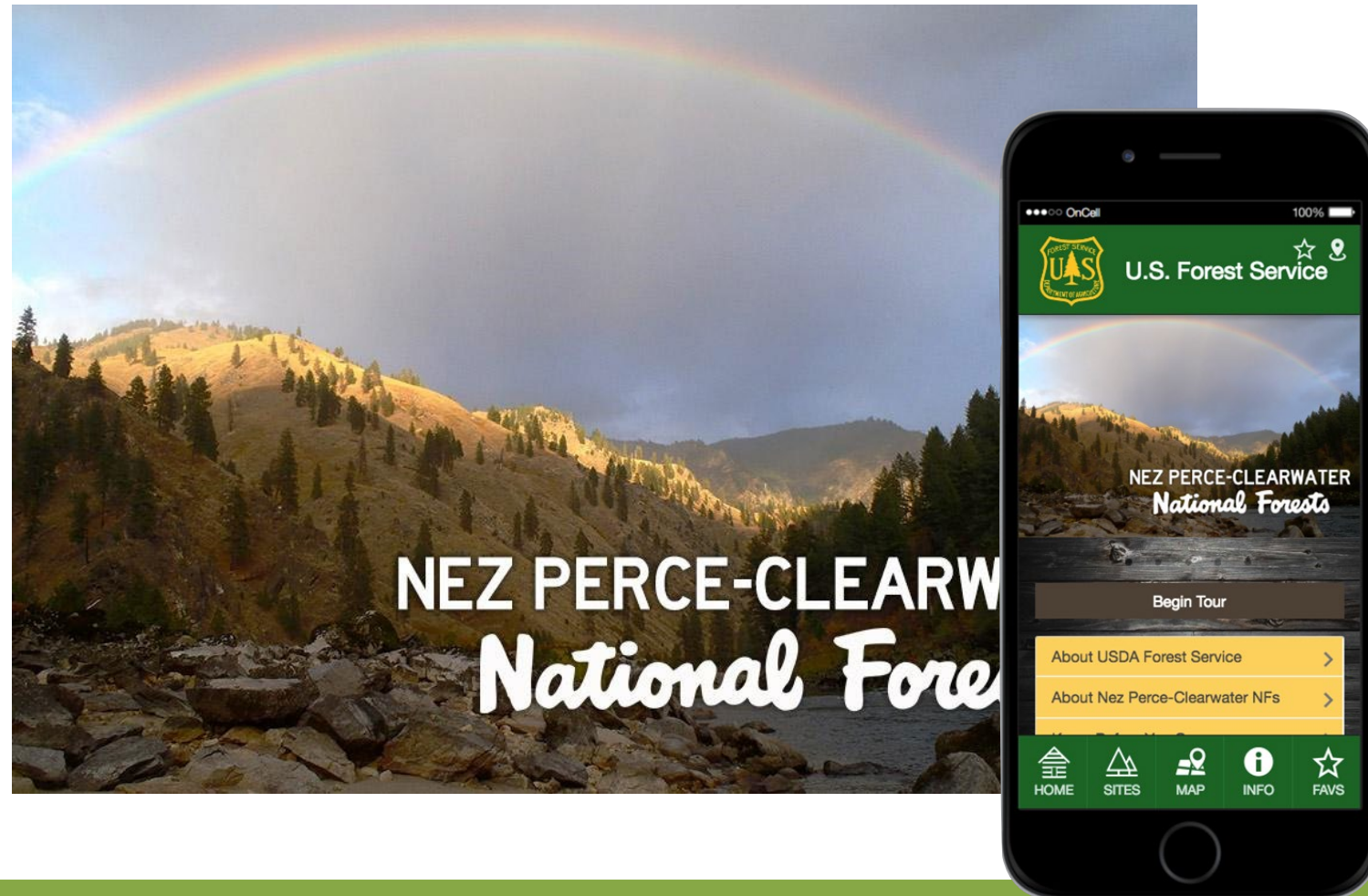


Utilizing Apps: Introducing Apps to the Great Outdoors

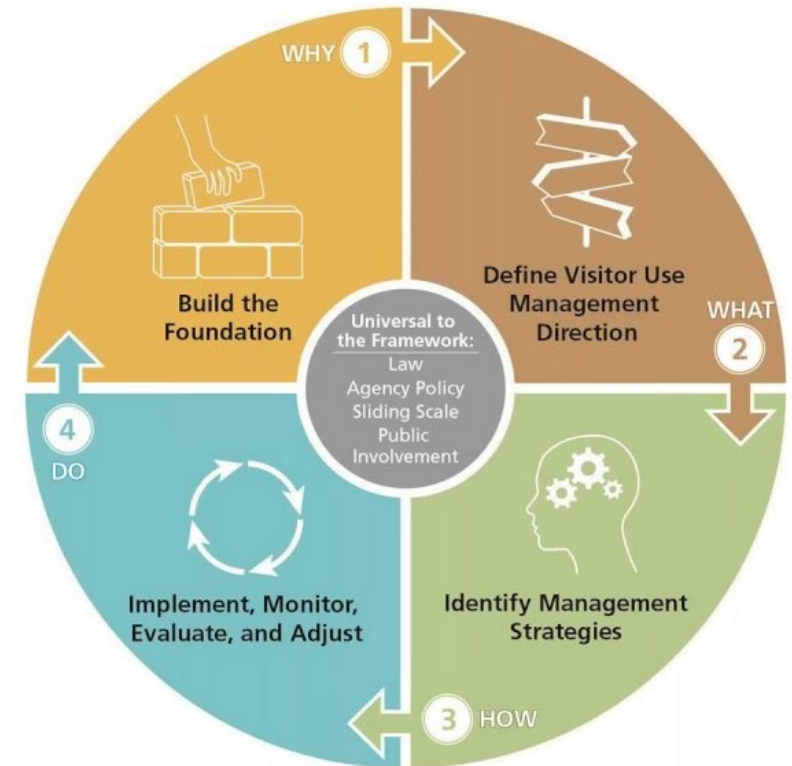


Leveraging Apps for Trail Sustainability

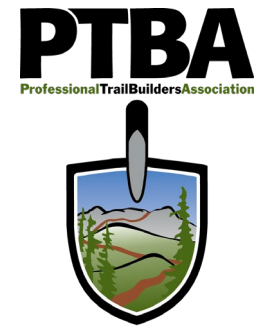


- Enhance communications
- Dynamic and engaging
- Volunteered GIS
- Public Participation GIS

Visitor Use Management Framework



Jeremy Wimpey



National Scenic Trails Partners



Leveraging Apps for Trail Sustainability

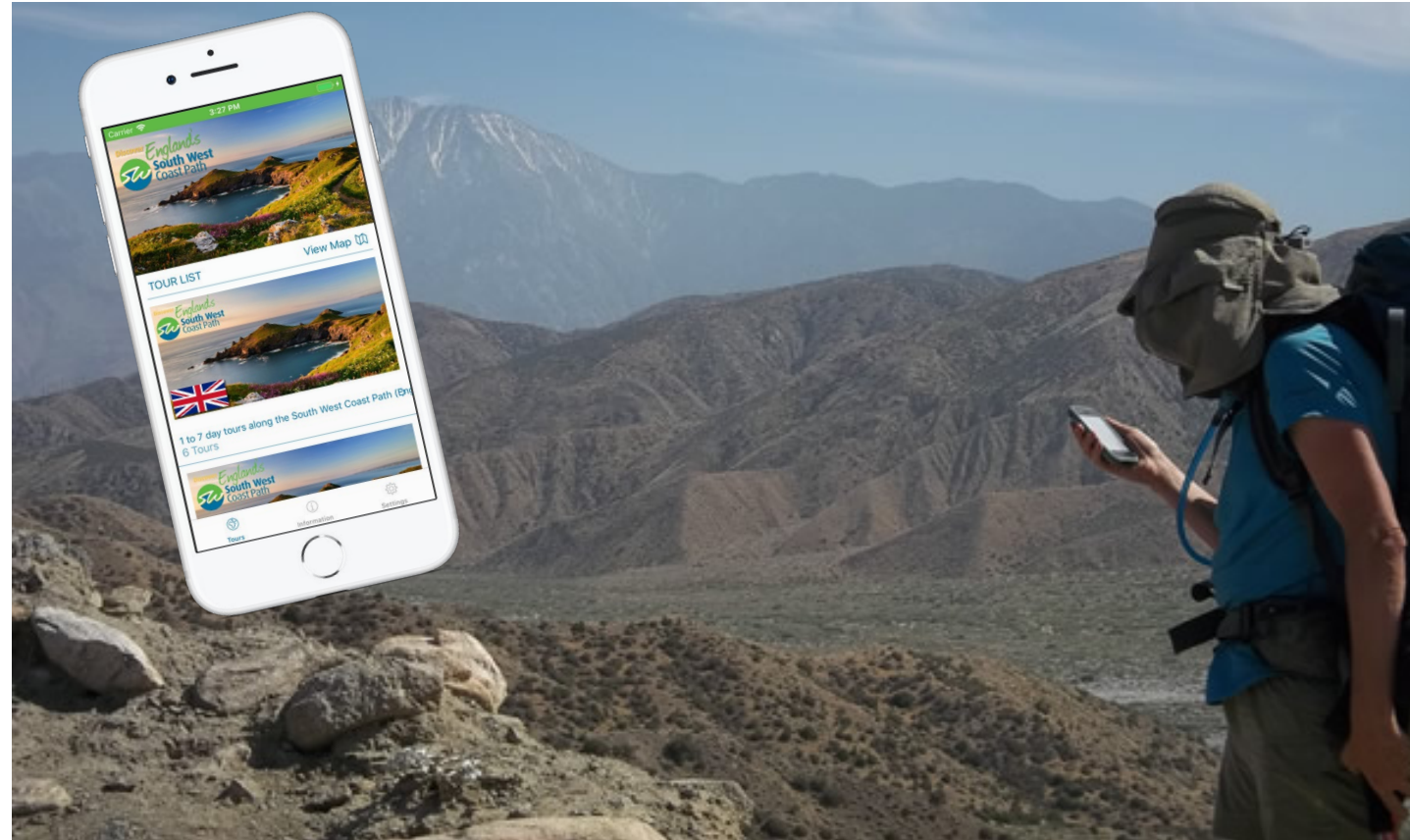


<https://itunes.apple.com/us/app/vidometer/>

- Capture information
 - Location
 - Speed
 - Behavior
- Share information
 - Guide visitors
 - Regulatory
 - Emergency

Apps: Foundation of Data Sharing

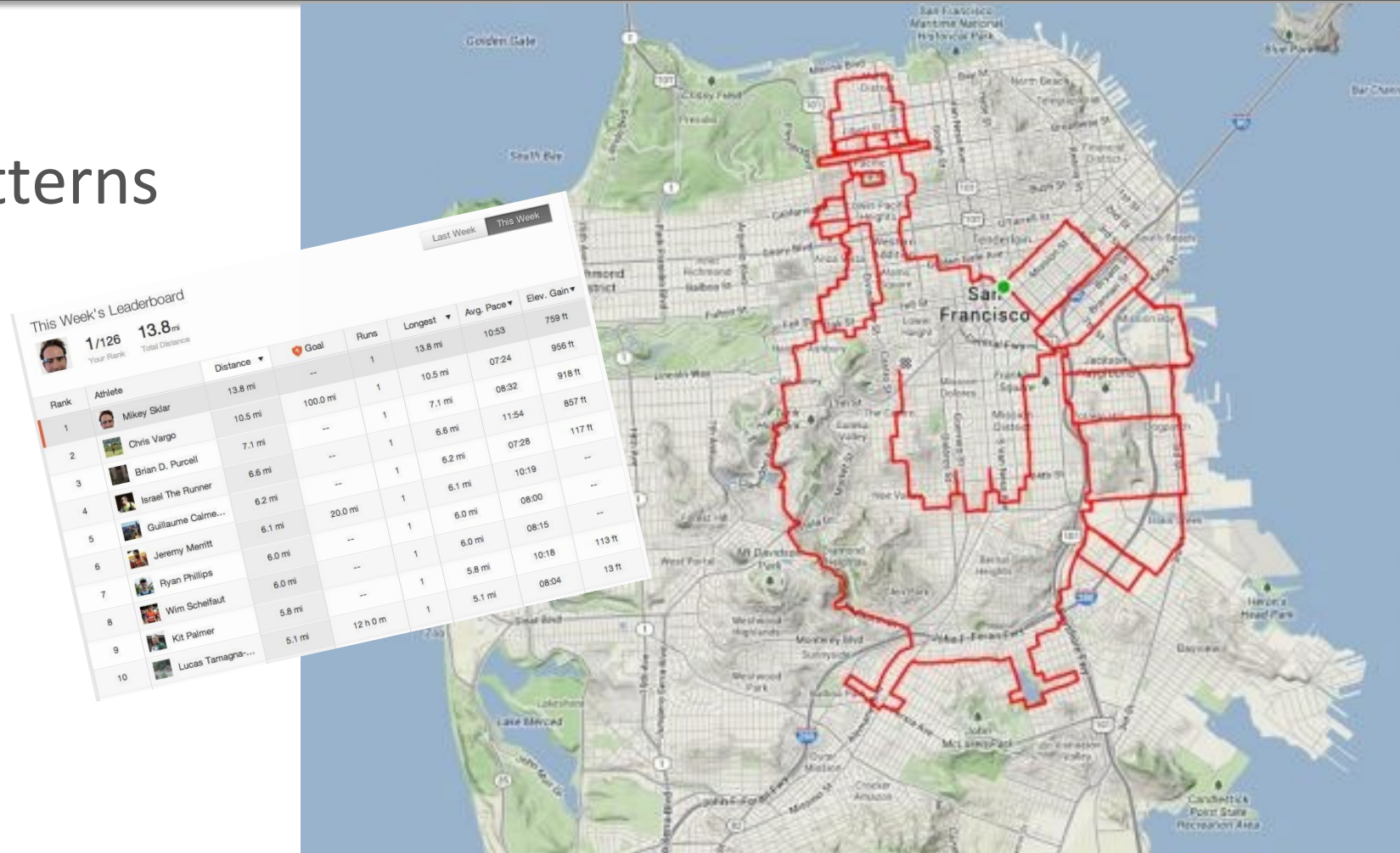
- Modern communication platform
 - Push & Pull data
- Dynamic and timely
- Volunteered GIS
- Public Participation GIS



<https://atlasguides.com/getting-the-most-from-your-phones-battery/>

Tracking Use

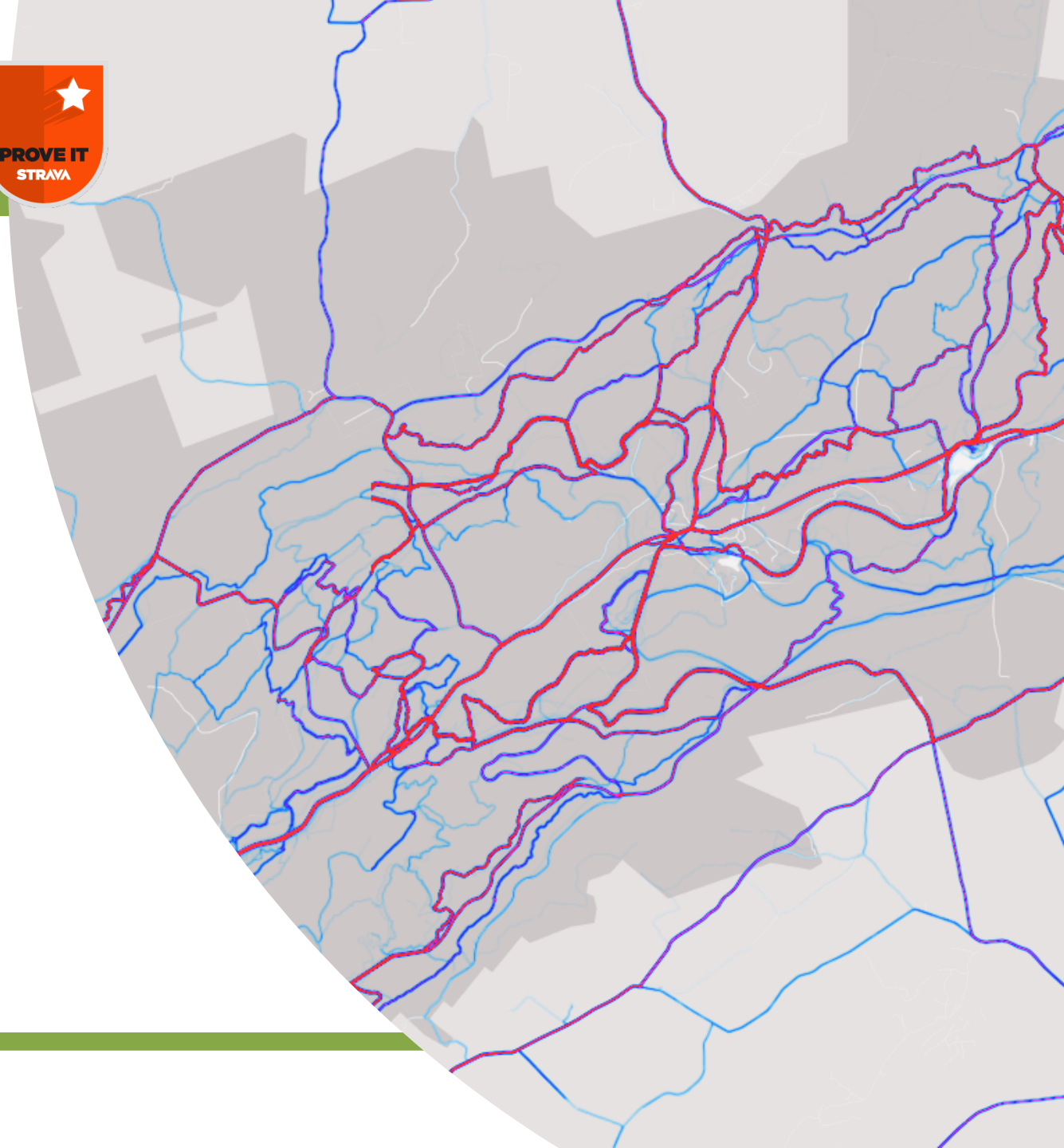
- Understand travel patterns
 - Time, speed
- Estimate use levels
 - Types & amounts
- Locate infrastructure



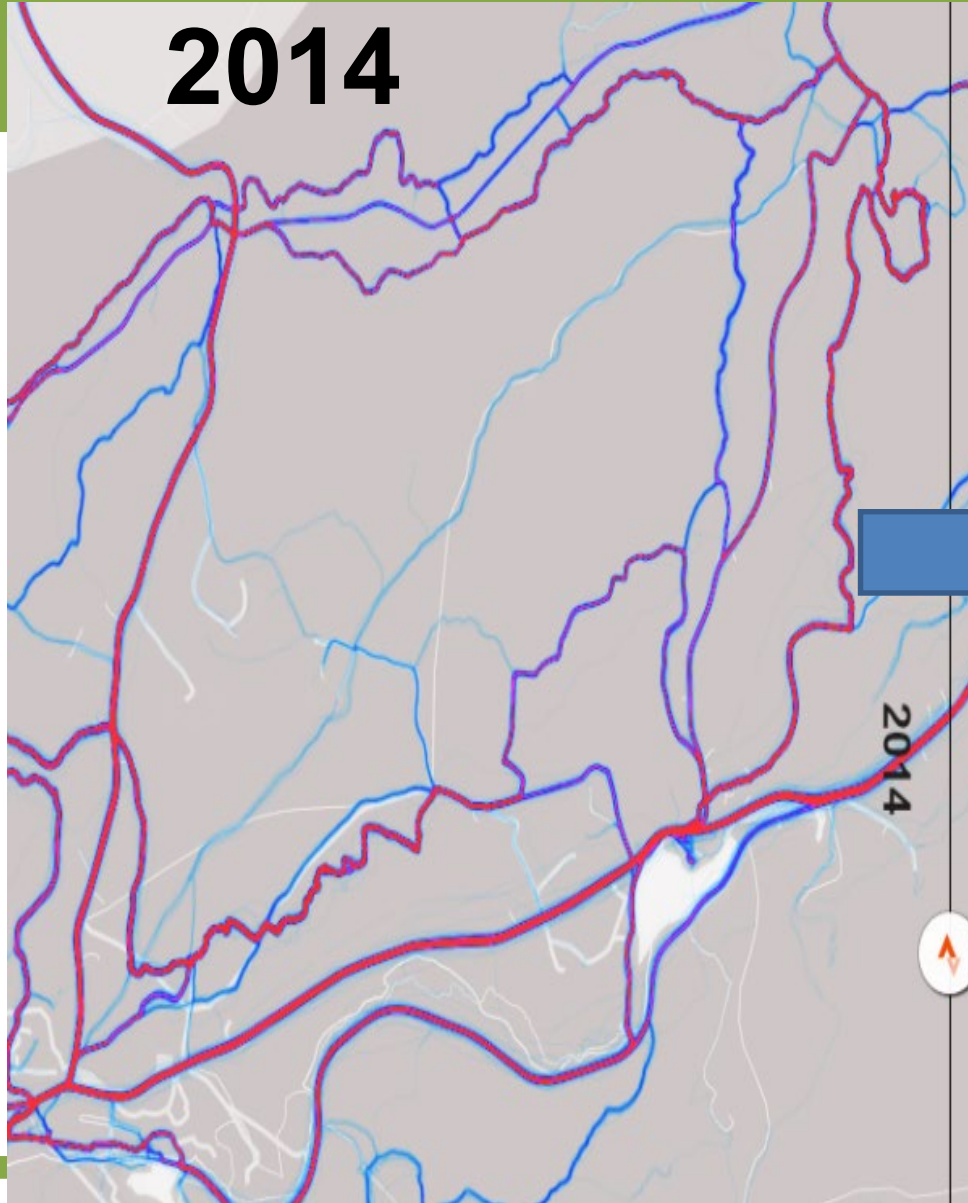
Michaux State Forest (PA)



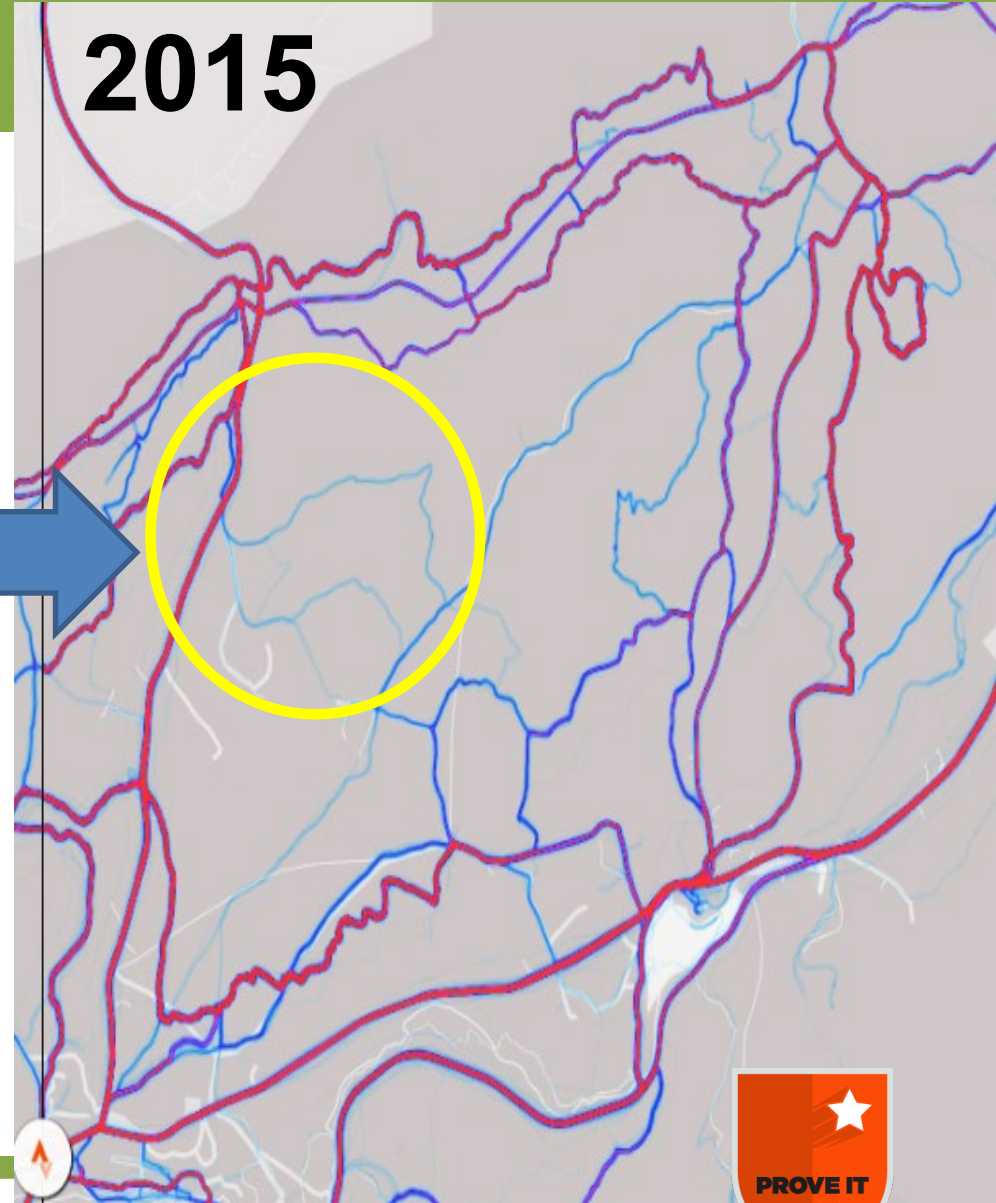
-
- Dynamic and rapidly growing trail system
 - “Rogue” trail network
 - Official trail network



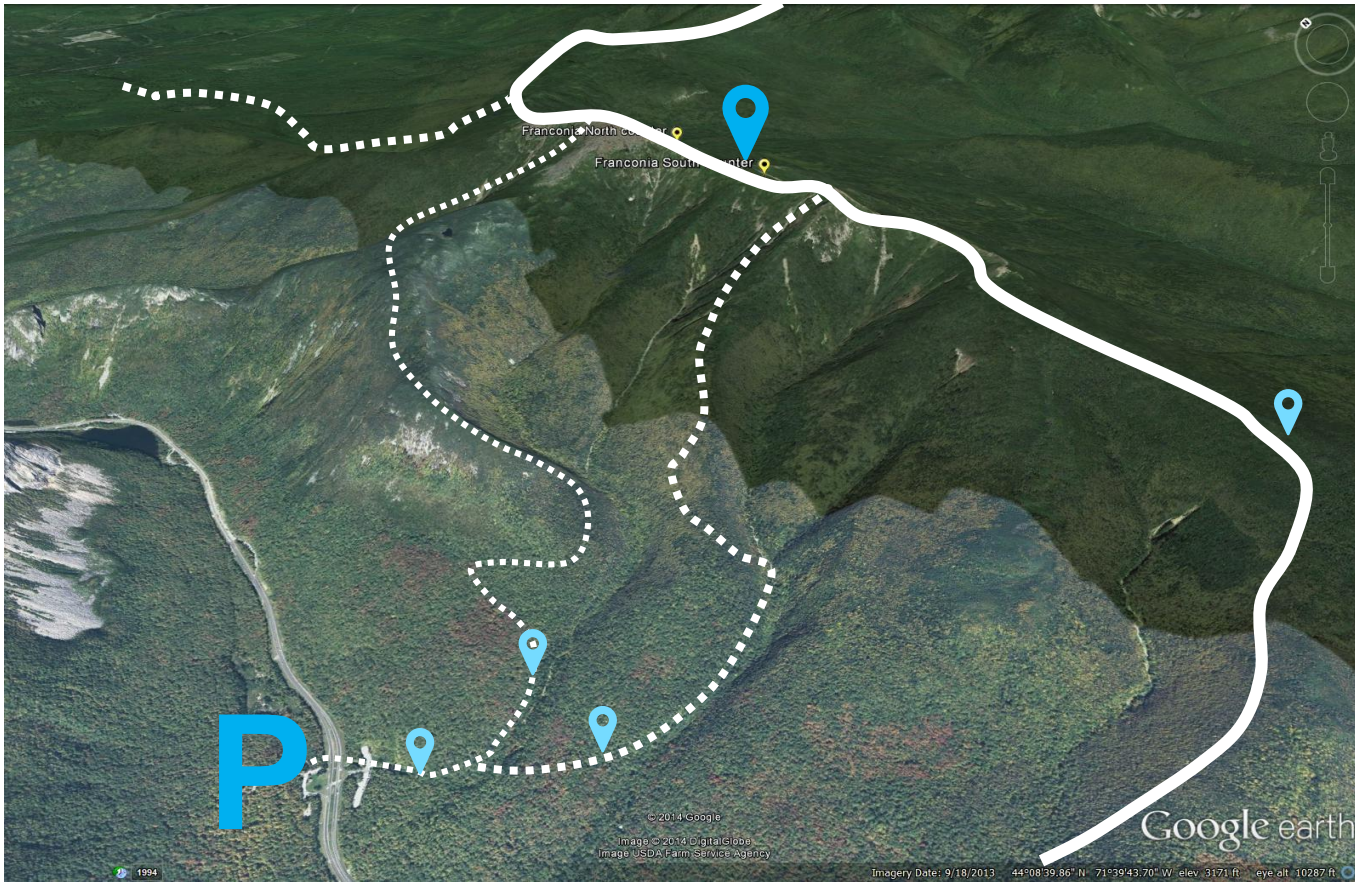
2014



2015



Managing Visitor Use



- Crowding
- Capacity
- Safety
- Wilderness management
- Resource protection

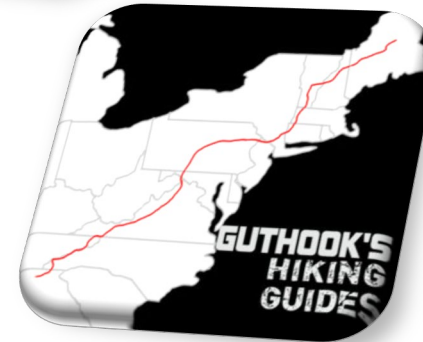
Managing Visitor Use

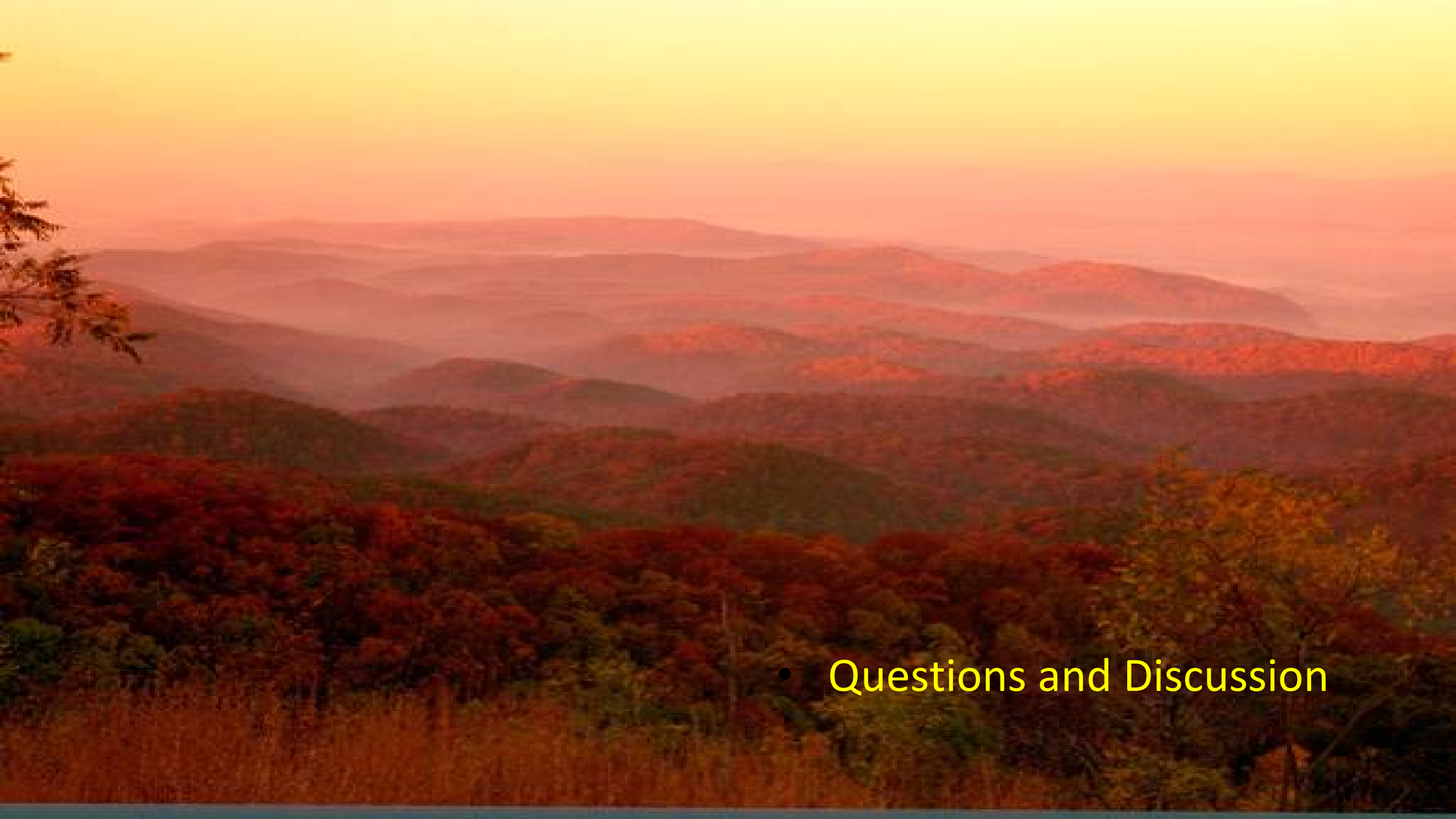
- Where? When? How many?
- Delay
- Speed
- Direction of travel
- Set visitor expectations
- Integrate with management systems



Applications of Technology

- Estimate use levels
 - Numbers, \$, types, health
- Inform management of permits & quotas
- Locate and monitor trail system development
- LEO support
- Resource protection
- Experience enhancement
- Stewardship engagement





- Questions and Discussion