

Developing a network of greenways in metro Boston



Iconic Multi-use Trails



Charles River Esplanade - 1910

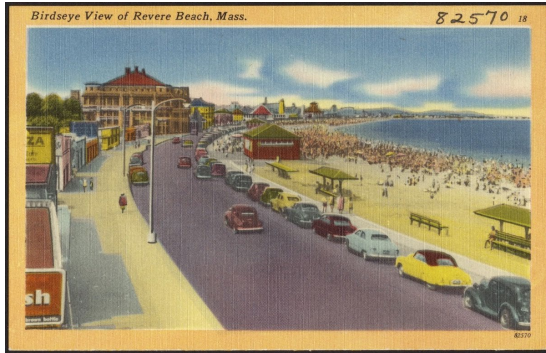


Minuteman Commuter Bikeway - 1993



Emerald Necklace (Olmsted) - 1878

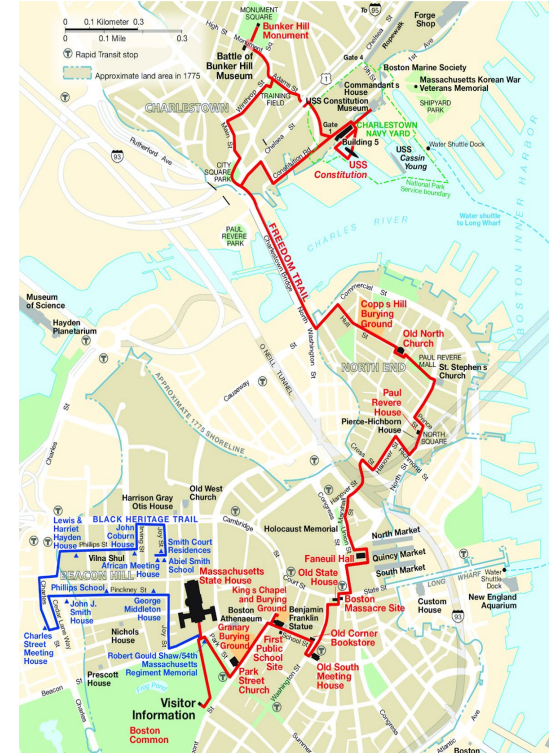
Iconic **Foot Trails** in the Boston Region



Revere Beach Boardwalk, 1896

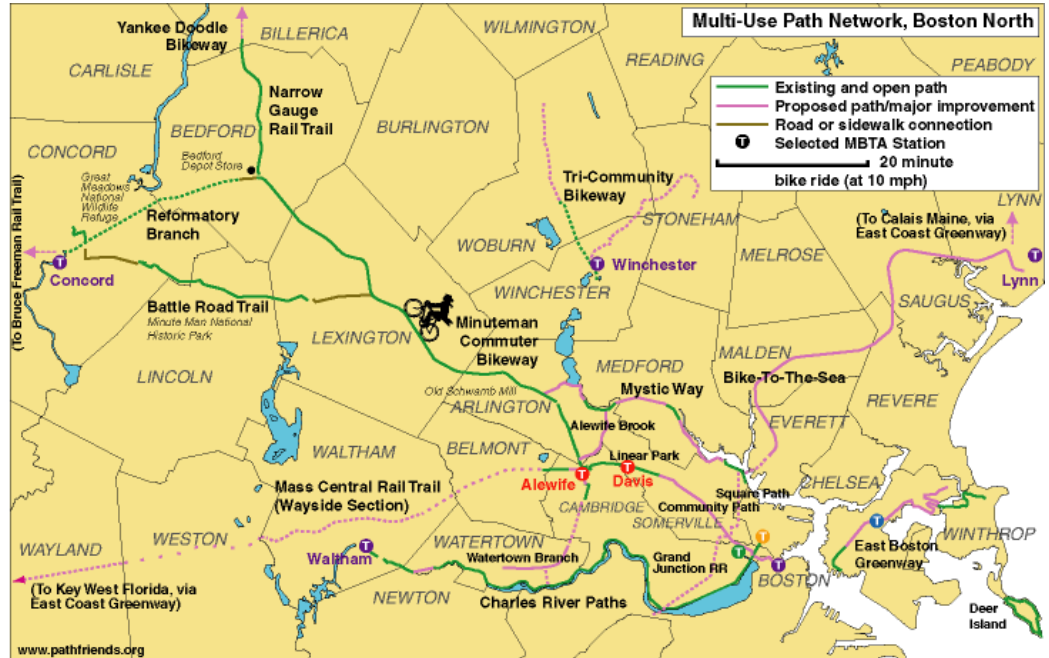


Bay Circuit Trail, 1928



Black Heritage & Freedom Trail 1951

Snapshot 2008



- Scattered and limited bike trail network
- No comprehensive mapping of bike facilities or trails
- Bike lanes in less than 5 communities
- No protected bike lanes

Creating and Implementing The Network

Snapshot *Inventory/Mapping (2011 to present)*

Collaborate *Develop a coalition (2015)*

Brand *Develop system branding and mark (2016)*

Vision *Develop a vision plan (2018)*

Involve *Series of place based charrettes and community meetings*





Immerse *Summer ride and walk series (2014 to present)*

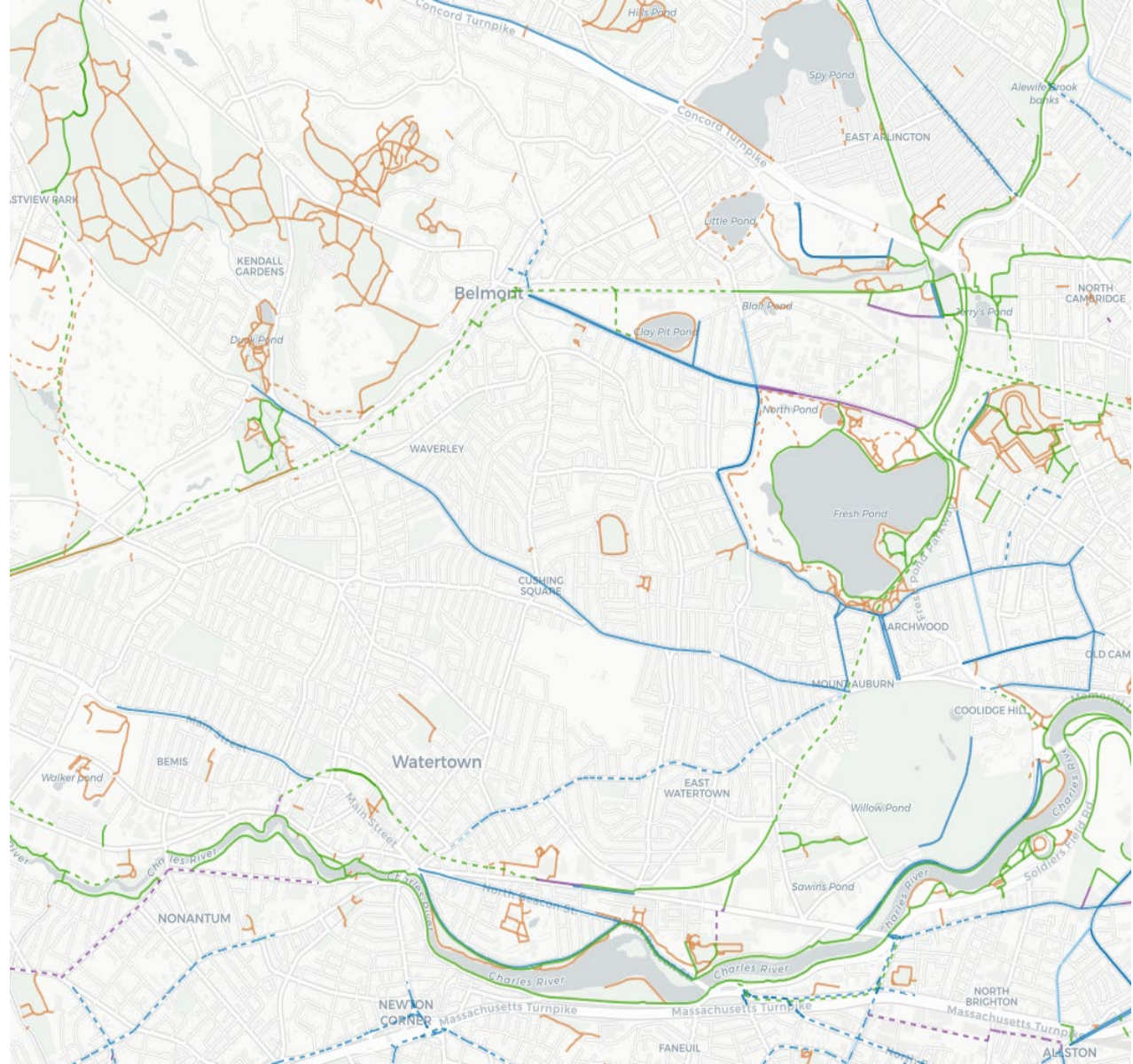
Invest *Kickstart greenway projects in municipalities*

Install *Develop wayfinding*

Snapshot

trailmap.mapc.org

-  Shared-use paths
-  Protected bike lanes
-  Bike Lanes
-  Foot Trails



Collaborate

- Commonwealth of Massachusetts - MassDOT, DCR, MWRA
- 101 MAPC cities and towns
- Numerous advocacy organizations, local and regional



rails-to-trails
conservancy



**Friends of the
Middlesex Fells
Reservation**

Dedicated to the protection and harmonious use of the Fells



dcr
Massachusetts



Brand

High Line



New York

Underline



Miami

BeltLine



Atlanta

LandLine



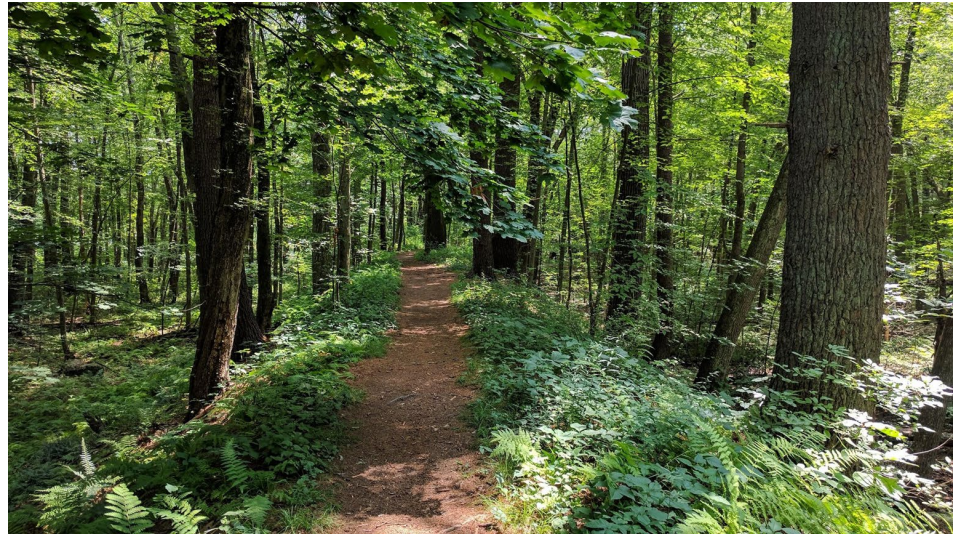
Boston

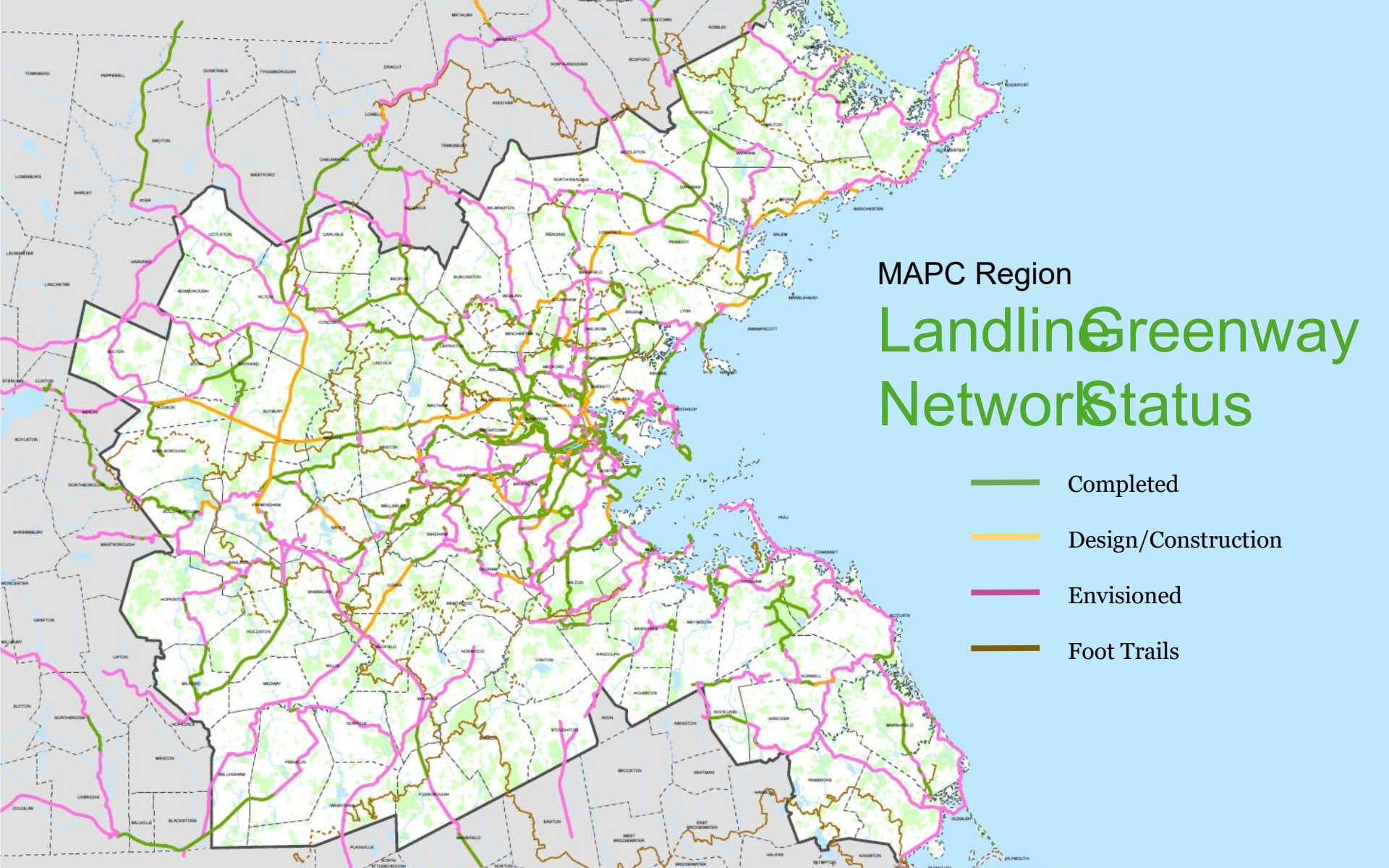


LandLine Vision Plan

- **900 miles** of regional greenways
(firm surface accessible)
 - 46% completed
- **500 miles** of regional foot trails
 - 60% completed

92% of region's 3.1 million
population within 1 mile of a
LandLine corridor when completed





MAPC Region

Landline Greenway Network Status

- Completed
- Design/Construction
- Envisioned
- Foot Trails

Foot TrailVision

- **Bay Circuit Trail**

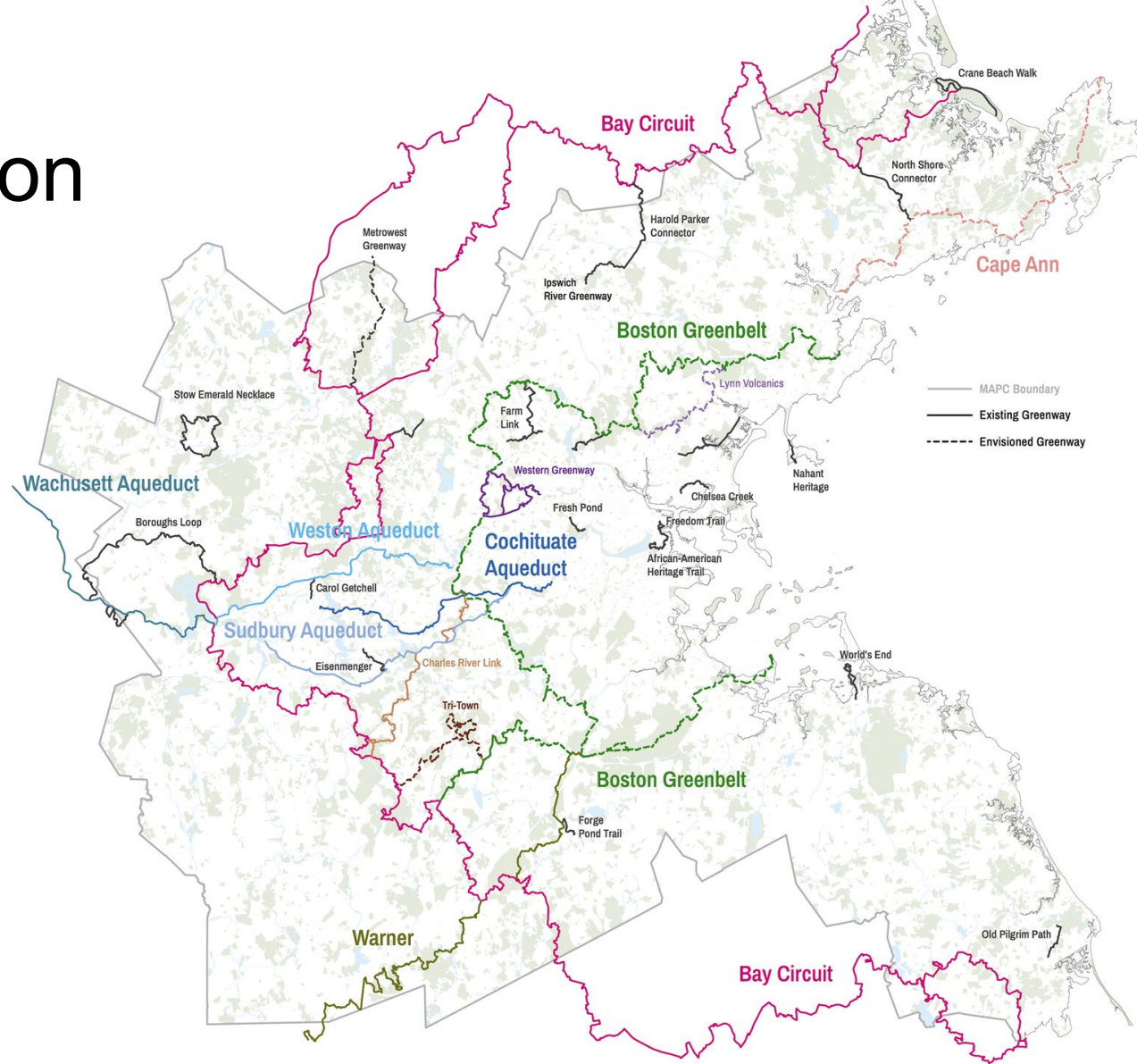
230 miles

- Proposed in 1929
- Managed by the AMC

- **Boston Greenbelt**

80 miles

- Proposed in 2013
- Regional walks in 2013/2014



Vision Plan Release 2018

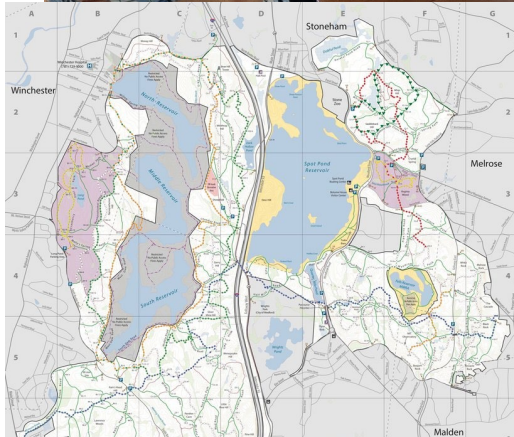


Vision Plan Release Ride

Celebrate& Advocate



Involve- place based charrettes



**Middlesex
Fells**

Chelsea Creek



Immerse

Summer ride and walk series



- Annually since 2013
- Bring partners, advocates and others together on a bike ride or a walk
- Celebrate completed projects, and advocate for new ones



Carriage road refurbished in center of Boston





Boulevard replacing overhead bridge



Scouting ROW for trail extension



Neighborhood Greenways



Invest

Facilitate or develop new projects

- Present the LandLine vision to member communities, and work to initiate new projects
 - Rail Trails
 - Complete Streets
- Advance Funded Projects



Invest East Boston Greenway

- Collaborate with local trail group to identify new extensions
 - East to Winthrop
 - North to Revere Beach
 - Rail trail along Chelsea Creek



East Boston Greenway



Current Terminus at Constitution Beach



Rail trail agreement under negotiation



Scouting ROW for trail extension

Invest Aqueduct Trails

- 68 miles connected trail network along 4 aqueducts
- Collaboration with the MWRA and affected municipalities to provide public access and trail improvements



The Boston Globe
WEDNESDAY, MAY 23, 2012

State will open 40 miles of MWRA trails to public

By David Abel
GLOBE STAFF

"No trespassing" signs along a historic ribbon of land from Clinton to Boston will be removed over coming months, after state officials announced Tuesday they would make a network of trails over a century-old system of aqueducts accessible to hikers, bikers, or anyone seeking a stroll in the woods.

The 40 miles of land, long used surreptitiously by residents, will become accessible as the communities are granted permission to share the land with the Massachusetts Water Resources Authority.

"This policy is a great example of promoting multiple environmental goals: clean water supply, open-space access, and connecting people to the outdoors," state Energy and Environmental Affairs Secretary Rick Sullivan said at a press conference in Boston. "We welcome partnerships with local communities to help enhance safety while providing public access to this pristine open space."

The trails run atop the Sudbury, Weston, Wachusett, and Cochituate aqueducts. All but the Cochituate aqueduct continue to serve as part of the MWRA's backup water supply and could be closed to the public in the event of an emergency.

The trails, which are at most

TRAILS, Page A9

TRAILS ON AQUEDUCTS

5 MILES

SOURCE: Massachusetts Water Resources Authority

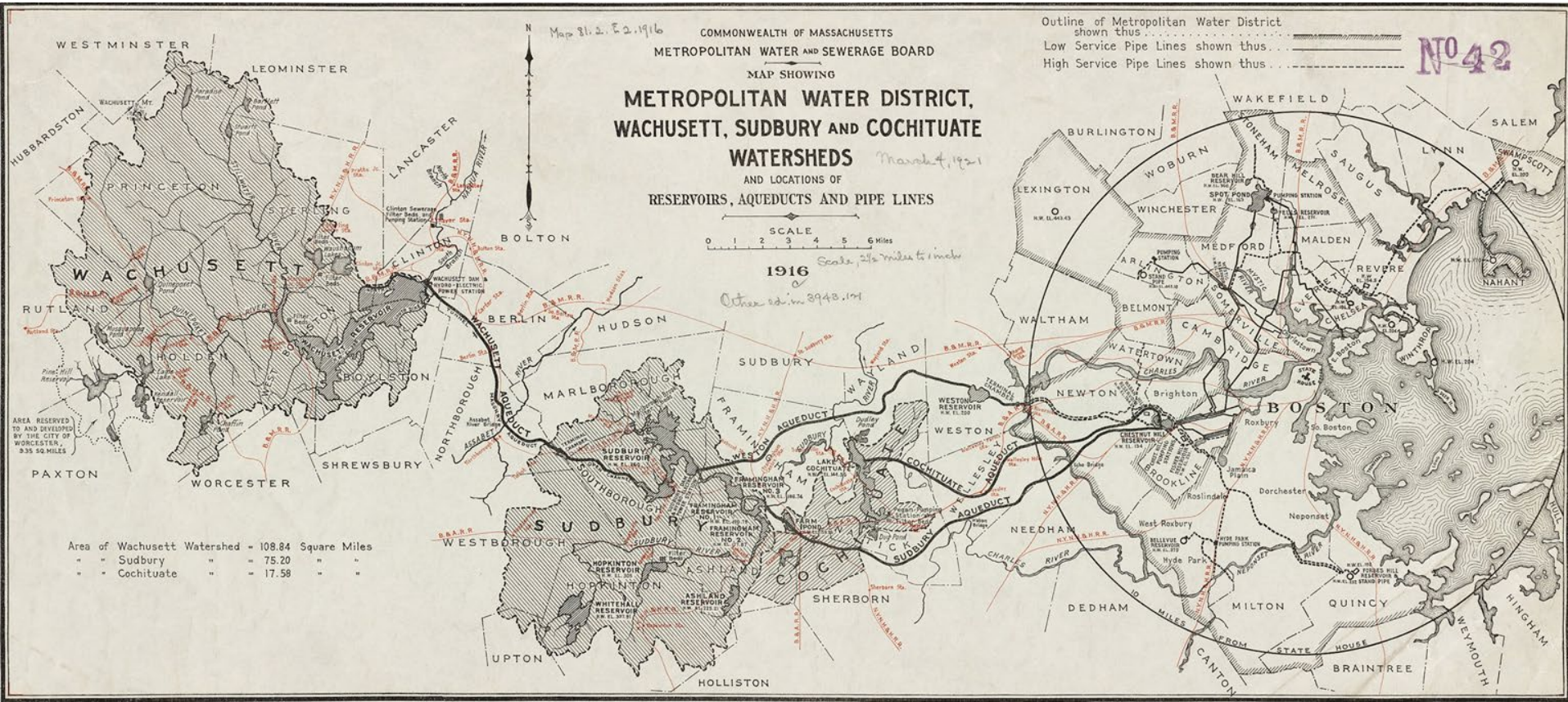
GLOBE STAFF

NIGHT NOISE
Today: Some sun, a T-storm late.
High 73-78. Low 59-64.
Tomorrow: Some sun, a T-storm.
High 73-78. Low 59-64.
High Tide: 1:15 a.m. 1:52 p.m.
Sunrise: 5:15 a.m. Sunset: 8:07 p.m.
Full Report: Page B13

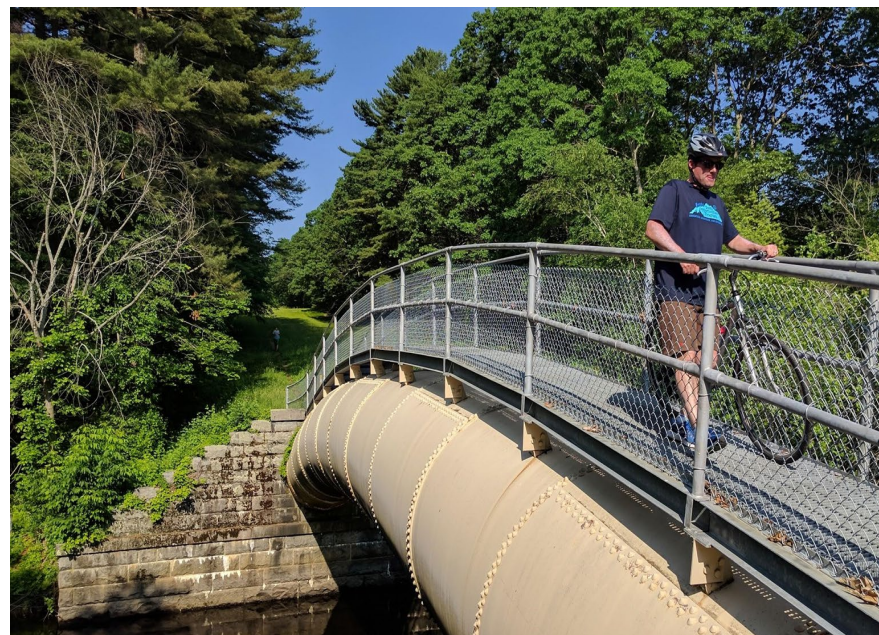


Aqueduct Trails

Connecting 4 historic aqueducts west of Boston

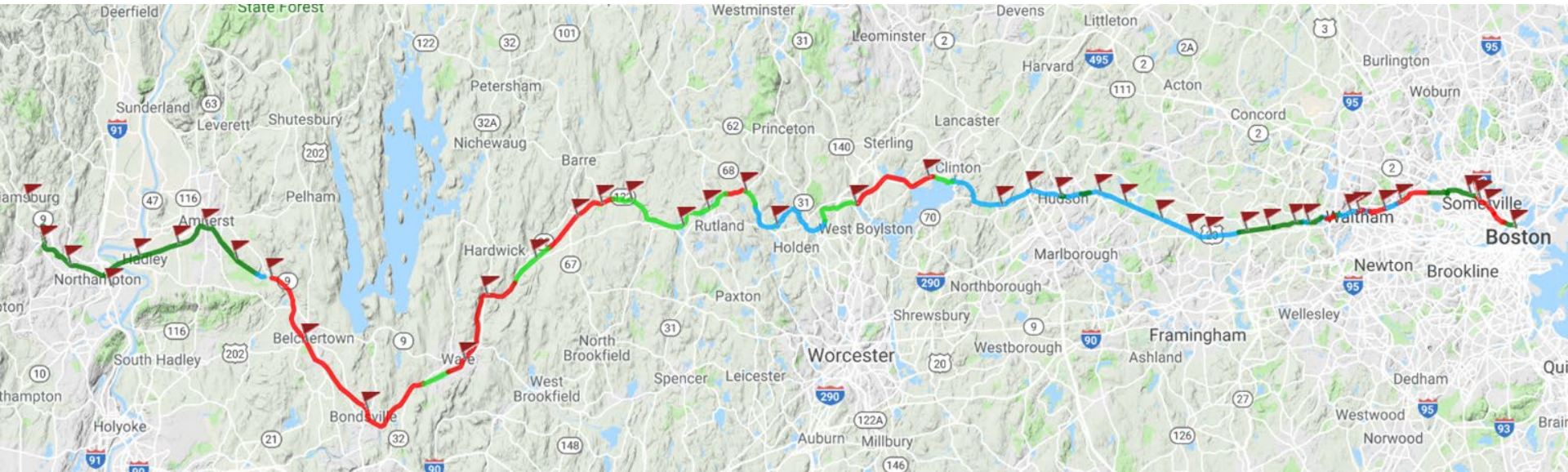


1903 to 2019



Invest

Mass Central Rail Trail



100 miles between Boston and Northampton

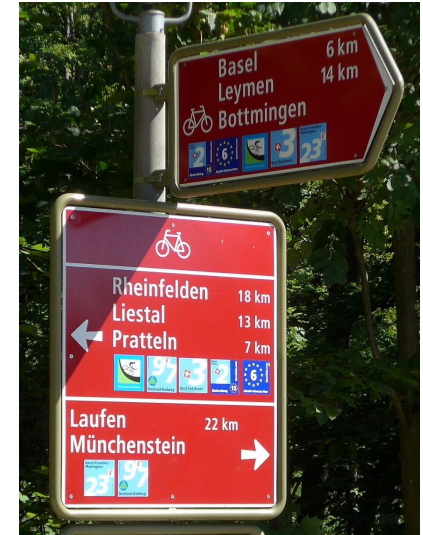
Mass Central Rail Trail



Install Wayfinding

Solidify the network through identification and wayfinding

- Location and direction
- Destinations
- Trail Name





David Loutzenheise
Metropolitan Area Planning Council, Boston