

2008 National Trails Symposium

Preserving our Nation's
Historic Trails: Trails Turtles,
Rut Nuts, Contractors, and
Bureaucrats

A CASE STUDY: A BUREAUCRATS TALE OF THE TRAIL

Framework, challenges, and
opportunities along the Juan Bautista
de Anza National Historic Trail



The legal framework for National Scenic and Historic Trails on the public lands

The National Trails System Act establishes a national trails system, allowing these types of trails to be designated.

National Recreation Trails

National Scenic Trails

National Historic Trails

National Recreation Trails

Secretarial level designation of a trail for recreational purposes.

Must be reasonably accessible to urban areas.

National Scenic Trails

Can only be designated by Congress.

Extended trails located so as to provide maximum outdoor recreation, conservation, and enjoyment of nationally significant scenic qualities of areas.

May be located to represent a variety of landforms and physiographic settings along its length.

National Historic Trails

Can only be designated by Congress.

Extended trails that attempt to follow along the original trails or routes of travel of national historic significance.

Purpose: to identify and protect the historic route and its remnants and artifacts for public use and enjoyment.

Status of the National Scenic and Historic Trails Management on BLM Lands

BLM has a NSHT Strategy and Work Plan in place to provide a national – level framework to develop guidance.

BLM is in the process of developing policies for the National Scenic and Historic Trails it manages.

What is special
about the Juan
Bautista de Anza
NHT?

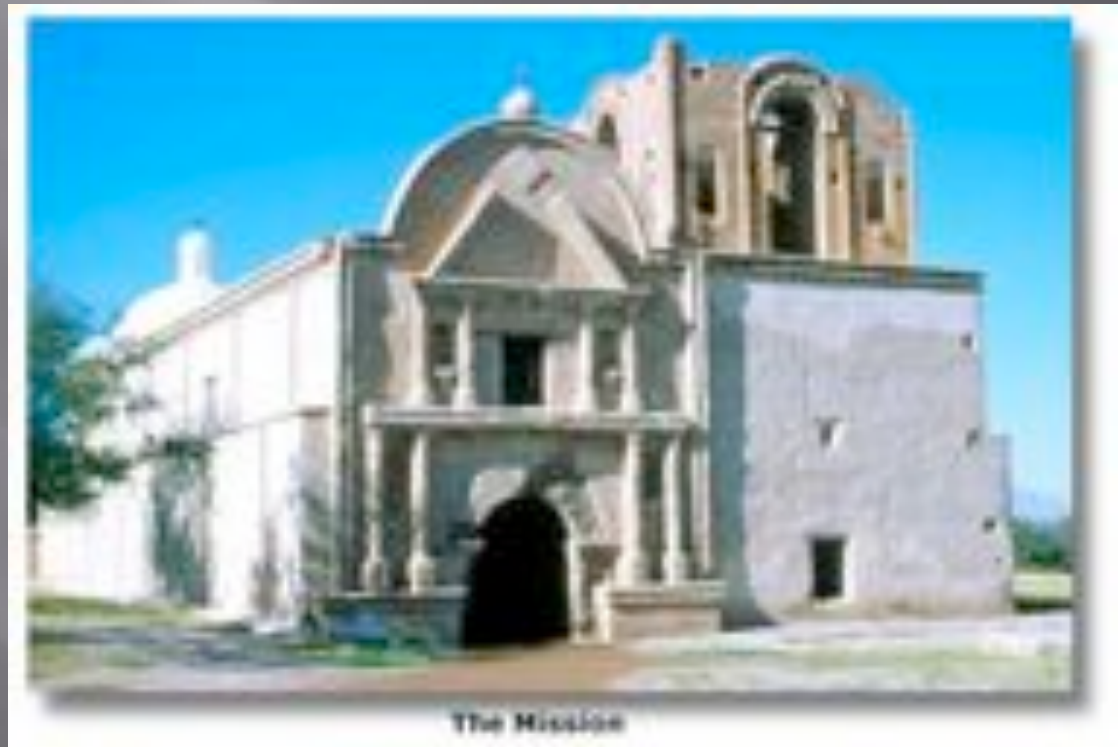
It connects
associated
historic sites.

The Trail between
Tubac and
Tumacacori.



Historic sites along the Trail

- ▣ Tumacacori Mission



Historic sites along the Trail



Tubac Presidio



Santa Cruz River Valley

- ▣ The Trail follows the Santa Cruz River north towards the Gila River. Most of this section of the Trail lies on private lands and is in-accessible to the public.



At last, the Santa Cruz segment
leads into the Gila River segment



The Anza NHT follows the Gila River west to Yuma



Photo by Paul Oberlin

The Anza Trail cuts away from the Gila River and trends west

This segment of trail
cuts through dry ,
open terrain., near
the present day
town of Maricopa,
Arizona.



Anza NHT : management on public lands in Arizona



Challenges of managing the Anza NHT on the public lands

- ▣ Managing recreation



Challenges

- ▣ Motorized recreation



Challenges

Increasing numbers of ATV and motorcycle users and the consequential environmental damage.



Challenges

Equestrian recreation



Challenges

- ▣ Managing public demand for utilities and rights-of-way on multiple use lands



Challenges

Rights-of-way construction has environmental and visual impacts on the landscape.



Opportunities

Partnerships with other agencies .



Opportunities

Build partnerships with organized historical reenactment groups



Opportunities

Sustain partnerships with volunteer groups like Boy Scouts and the Arizona Archaeological Society



Opportunities

Volunteers from Student Conservation Associates



Opportunities

Build relationships with organizations that support the Anza Trail



Opportunities

Interpretation of the Anza NHT



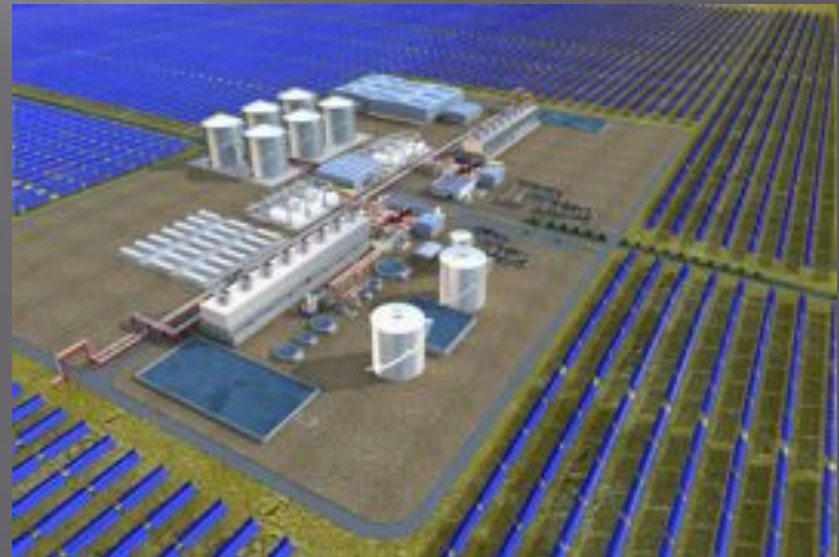
Opportunities

Environmental education



What does the future hold?

Alternative energy industries are applying for rights-of-way for solar farms on large tracts of public lands in the desert Southwest. Historic trails may be impacted by these installations.



Wish list for the future

Promote recreational opportunities

Increase learning opportunities through information access and interpretation

Work to assure public access to trail segments

Work to conserve historic landscapes along the Trail using Visual Resource Management tools.