



Maintenance Practices and Costs of Rail Trails

Tom Sexton
Northeast Regional Office
Rails-to-Trails Conservancy
tom@railstotrails.org



Ron Steffey
Consultant
Steffey Trail Connections
steffeytrail@gmail.com



Henry Stroud, AICP
Section Chief – Trails & Open Space
Planning
Montgomery County Planning
Commission
hstroud@montcopa.org



Asphalt Trail, Suburban Setting

Trail Name:	Generic Suburban MontCo Trail
Trail Length (miles):	1

Maintenance Activity	Volunteer Hours	Staff Hours	Staff Rate	Total Labor Cost	Equipment Hours	Equipment Hourly Rate**	Total Equipment Costs	Contracted Services Cost	Material Costs	Total Costs
Trail Surface & Infrastructure										
Trail surface repair*	0.0	2.0	\$20	\$40	0.0	\$0	\$0	\$0	\$0	\$0
Trail shoulder stabilization & repair	0.0	18.0	\$20	\$360	0.0	\$0	\$0	\$0	\$0	\$360
Inspection & clearing of drainage structures	0.0	8.0	\$20	\$160	0.0	\$0	\$0	\$0	\$0	\$160
Bridge & tunnel inspection	0.0	0.0	\$0	\$0	0.0	\$0	\$0	\$1,300	\$0	\$1,300
Leaf, snow, mud, & debris removal	0.0	64.0	\$20	\$1,280	0.0	\$0	\$0	\$250	\$0	\$1,530
Signage & pavement marking repair***	0.0	2.0	\$20	\$40	0.0	\$0	\$0	\$300	\$0	\$340
Vegetation Management										
Mowing	0.0	50.0	\$20	\$1,000	0.0	\$0	\$0	\$0	\$0	\$1,000
Edging	0.0	50.0	\$20	\$1,000	0.0	\$0	\$0	\$0	\$0	\$1,000
Tree pruning & brush cutting	0.0	8.0	\$20	\$160	0.0	\$0	\$0	\$0	\$0	\$160
Fallen tree and branch removal	0.0	8.0	\$20	\$160	0.0	\$0	\$0	\$0	\$0	\$160
Standing hazard tree removal	0.0	8.0	\$20	\$160	0.0	\$0	\$0	\$0	\$0	\$160
Herbicide treatment	0.0	1.0	\$20	\$20	0.0	\$0	\$0	\$0	\$0	\$20
Trailheads										
Parking lot surface repair	0.0	2.0	\$20	\$40	0.0	\$0	\$0	\$0	\$0	\$40
Trash removal	0.0	0.0	\$0	\$0	0.0	\$0	\$0	\$0	\$0	\$0
Landscape maintenance	0.0	0.0	\$0	\$0	0.0	\$0	\$0	\$0	\$0	\$0
Bathroom cleaning & repairs	0.0	0.0	\$0	\$0	0.0	\$0	\$0	\$0	\$0	\$0
Trail information kiosk repairs	0.0	1.0	\$20	\$20	0.0	\$0	\$0	\$0	\$0	\$20
Trailside Amenities										
Gate, fence/railing, bollard, & bench repairs	0.0	25.0	\$20	\$500	0.0	\$0	\$0	\$0	\$0	\$500
General Maintenance										
Litter removal	0.0	38.0	\$20	\$760	0.0	\$0	\$0	\$0	\$0	\$760
Graffiti removal	0.0	2.0	\$20	\$40	0.0	\$0	\$0	\$0	\$0	\$40

Total Maintenance Costs	\$7,550
Average Maintenance Costs Per Mile	\$7,550
Volunteer Labor Rate****	\$24.69
Total Volunteer Contribution	\$0.00

*Trail / parking lot surface repair includes filling pot holes, dragging/grading, crack sealing, de-berming, etc. Essentially any repair to the trail or parking lot surface.

**Equipment rates may include rates for rented or owned equipment. Owned equipment may include the cost of operation and maintenance, but not depreciation.

***Don't include map printing or sign design costs.

**** Volunteer labor rates vary by state and year. Volunteers may also include mandated community service personnel

Asphalt Trail, Suburban Setting

Trail Name:	Generic Suburban MontCo Trail
Trail Length (miles):	1

Maintenance Activity	Volunteer Hours	Staff Hours	Staff Rate	Total Labor Cost	Equipment Hours	Equipment Hourly Rate**	Total Equipment Costs	Contracted Services Cost	Material Costs	Total Costs
Trail Surface & Infrastructure										
Trail surface repair*	0.0	2.0	\$20	\$40	0.0	\$0	\$0	\$0	\$0	\$0
Trail shoulder stabilization & repair	0.0	18.0	\$20	\$360	0.0	\$0	\$0	\$0	\$0	\$360
Inspection & clearing of drainage structures	0.0	8.0	\$20	\$160	0.0	\$0	\$0	\$0	\$0	\$160
Bridge & tunnel inspection	0.0	0.0	\$0	\$0	0.0	\$0	\$0	\$1,300	\$0	\$1,300
Leaf, snow, mud, & debris removal	0.0	64.0	\$20	\$1,280	0.0	\$0	\$0	\$250	\$0	\$1,530
Signage & pavement marking repair***	0.0	2.0	\$20	\$40	0.0	\$0	\$0	\$300	\$0	\$340
Vegetation Management										
Mowing	0.0	50.0	\$20	\$1,000	0.0	\$0	\$0	\$0	\$0	\$1,000
Edging	0.0	50.0	\$20	\$1,000	0.0	\$0	\$0	\$0	\$0	\$1,000
Tree pruning & brush cutting	0.0	8.0	\$20	\$160	0.0	\$0	\$0	\$0	\$0	\$160
Fallen tree and branch removal	0.0	8.0	\$20	\$160	0.0	\$0	\$0	\$0	\$0	\$160
Standing hazard tree removal	0.0	8.0	\$20	\$160	0.0	\$0	\$0	\$0	\$0	\$160
Herbicide treatment	0.0	1.0	\$20	\$20	0.0	\$0	\$0	\$0	\$0	\$20
Trailheads										
Parking lot surface repair	0.0	2.0	\$20	\$40	0.0	\$0	\$0	\$0	\$0	\$40
Trash removal	0.0	0.0	\$0	\$0	0.0	\$0	\$0	\$0	\$0	\$0
Landscape maintenance	0.0	0.0	\$0	\$0	0.0	\$0	\$0	\$0	\$0	\$0
Bathroom cleaning & repairs	0.0	0.0	\$0	\$0	0.0	\$0	\$0	\$0	\$0	\$0
Trail information kiosk repairs	0.0	1.0	\$20	\$20	0.0	\$0	\$0	\$0	\$0	\$20
Trailside Amenities										
Gate, fence/railing, bollard, & bench repairs	0.0	25.0	\$20	\$500	0.0	\$0	\$0	\$0	\$0	\$500
General Maintenance										
Litter removal	0.0	38.0	\$20	\$760	0.0	\$0	\$0	\$0	\$0	\$760
Graffiti removal	0.0	2.0	\$20	\$40	0.0	\$0	\$0	\$0	\$0	\$40

*Trail / parking lot surface repair includes filling pot holes, dragging/grading, crack sealing, de-berming, etc. Essentially any repair to the trail or parking lot surface.

**Equipment rates may include rates for rented or owned equipment. Owned equipment may include the cost of operation and maintenance, but not depreciation.

***Don't include map printing or sign design costs.

**** Volunteer labor rates vary by state and year. Volunteers may also include mandated community service personnel

Total Maintenance Costs	\$7,550
Average Maintenance Costs Per Mile	\$7,550
Volunteer Labor Rate****	\$24.69
Total Volunteer Contribution	\$0.00

Maintenance Activity	Volunteer Hours	Staff Hours	Staff Rate	Total Labor Cost	Equipment Hours	Equipment Hourly Rate**	Total Equipment Costs	Contracted Services Cost	Material Costs	Total Costs
Trail Surface & Infrastructure										
Inspection & clearing of drainage structures	0.0	8.0	\$20	\$160	0.0	\$0	\$0	\$0	\$0	\$160



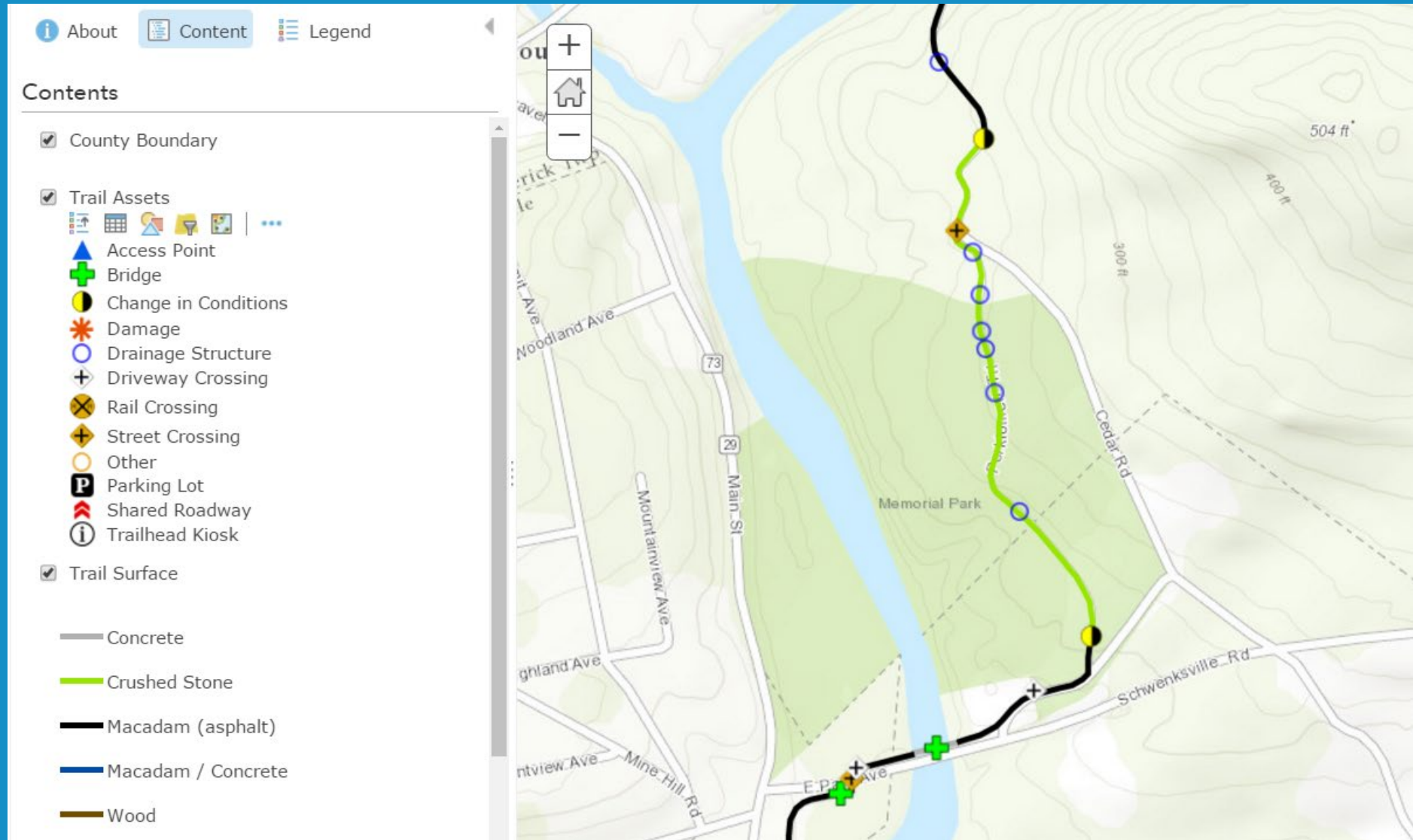
Maintenance Activity	Volunteer Hours	Staff Hours	Staff Rate	Total Labor Cost	Equipment Hours	Equipment Hourly Rate**	Total Equipment Costs	Contracted Services Cost	Material Costs	Total Costs
Trail Surface & Infrastructure										
Inspection & clearing of drainage structures	0.0	8.0	\$20	\$160	0.0	\$0	\$0	\$0	\$0	\$160



Maintenance Activity	Volunteer Hours	Staff Hours	Staff Rate	Total Labor Cost	Equipment Hours	Equipment Hourly Rate**	Total Equipment Costs	Contracted Services Cost	Material Costs	Total Costs
Trail Surface & Infrastructure										
Inspection & clearing of drainage structures	0.0	8.0	\$20	\$160	0.0	\$0	\$0	\$0	\$0	\$160



Maintenance Activity	Volunteer Hours	Staff Hours	Staff Rate	Total Labor Cost	Equipment Hours	Equipment Hourly Rate**	Total Equipment Costs	Contracted Services Cost	Material Costs	Total Costs
Trail Surface & Infrastructure										
Inspection & clearing of drainage structures	0.0	8.0	\$20	\$160	0.0	\$0	\$0	\$0	\$0	\$160



Asphalt Trail, Suburban Setting

Trail Name:	Generic Suburban MontCo Trail
Trail Length (miles):	1

Maintenance Activity	Volunteer Hours	Staff Hours	Staff Rate	Total Labor Cost	Equipment Hours	Equipment Hourly Rate**	Total Equipment Costs	Contracted Services Cost	Material Costs	Total Costs
Trail Surface & Infrastructure										
Trail surface repair*	0.0	2.0	\$20	\$40	0.0	\$0	\$0	\$0	\$0	\$0
Trail shoulder stabilization & repair	0.0	18.0	\$20	\$360	0.0	\$0	\$0	\$0	\$0	\$360
Inspection & clearing of drainage structures	0.0	8.0	\$20	\$160	0.0	\$0	\$0	\$0	\$0	\$160
Bridge & tunnel inspection	0.0	0.0	\$0	\$0	0.0	\$0	\$0	\$1,300	\$0	\$1,300
Leaf, snow, mud, & debris removal	0.0	64.0	\$20	\$1,280	0.0	\$0	\$0	\$250	\$0	\$1,530
Signage & pavement marking repair***	0.0	2.0	\$20	\$40	0.0	\$0	\$0	\$300	\$0	\$340
Vegetation Management										
Mowing	0.0	50.0	\$20	\$1,000	0.0	\$0	\$0	\$0	\$0	\$1,000
Edging	0.0	50.0	\$20	\$1,000	0.0	\$0	\$0	\$0	\$0	\$1,000
Tree pruning & brush cutting	0.0	8.0	\$20	\$160	0.0	\$0	\$0	\$0	\$0	\$160
Fallen tree and branch removal	0.0	8.0	\$20	\$160	0.0	\$0	\$0	\$0	\$0	\$160
Standing hazard tree removal	0.0	8.0	\$20	\$160	0.0	\$0	\$0	\$0	\$0	\$160
Herbicide treatment	0.0	1.0	\$20	\$20	0.0	\$0	\$0	\$0	\$0	\$20
Trailheads										
Parking lot surface repair	0.0	2.0	\$20	\$40	0.0	\$0	\$0	\$0	\$0	\$40
Trash removal	0.0	0.0	\$0	\$0	0.0	\$0	\$0	\$0	\$0	\$0
Landscape maintenance	0.0	0.0	\$0	\$0	0.0	\$0	\$0	\$0	\$0	\$0
Bathroom cleaning & repairs	0.0	0.0	\$0	\$0	0.0	\$0	\$0	\$0	\$0	\$0
Trail information kiosk repairs	0.0	1.0	\$20	\$20	0.0	\$0	\$0	\$0	\$0	\$20
Trailside Amenities										
Gate, fence/railing, bollard, & bench repairs	0.0	25.0	\$20	\$500	0.0	\$0	\$0	\$0	\$0	\$500
General Maintenance										
Litter removal	0.0	38.0	\$20	\$760	0.0	\$0	\$0	\$0	\$0	\$760
Graffiti removal	0.0	2.0	\$20	\$40	0.0	\$0	\$0	\$0	\$0	\$40

*Trail / parking lot surface repair includes filling pot holes, dragging/grading, crack sealing, de-berming, etc. Essentially any repair to the trail or parking lot surface.

**Equipment rates may include rates for rented or owned equipment. Owned equipment may include the cost of operation and maintenance, but not depreciation.

***Don't include map printing or sign design costs.

**** Volunteer labor rates vary by state and year. Volunteers may also include mandated community service personnel

Total Maintenance Costs	\$7,550
Average Maintenance Costs Per Mile	\$7,550
Volunteer Labor Rate****	\$24.69
Total Volunteer Contribution	\$0.00

Maintenance Activity	Volunteer Hours	Staff Hours	Staff Rate	Total Labor Cost	Equipment Hours	Equipment Hourly Rate**	Total Equipment Costs	Contracted Services Cost	Material Costs	Total Costs
Trail Surface & Infrastructure										
Signage & pavement marking repair***	0.0	2.0	\$20	\$40	0.0	\$0	\$0	\$300	\$0	\$340



Maintenance Activity	Volunteer Hours	Staff Hours	Staff Rate	Total Labor Cost	Equipment Hours	Equipment Hourly Rate**	Total Equipment Costs	Contracted Services Cost	Material Costs	Total Costs
Trail Surface & Infrastructure										
Signage & pavement marking repair***	0.0	2.0	\$20	\$40	0.0	\$0	\$0	\$300	\$0	\$340



Asphalt Trail, Suburban Setting

Trail Name:	Generic Suburban MontCo Trail
Trail Length (miles):	1

Maintenance Activity	Volunteer Hours	Staff Hours	Staff Rate	Total Labor Cost	Equipment Hours	Equipment Hourly Rate**	Total Equipment Costs	Contracted Services Cost	Material Costs	Total Costs
Trail Surface & Infrastructure										
Trail surface repair*	0.0	2.0	\$20	\$40	0.0	\$0	\$0	\$0	\$0	\$0
Trail shoulder stabilization & repair	0.0	18.0	\$20	\$360	0.0	\$0	\$0	\$0	\$0	\$360
Inspection & clearing of drainage structures	0.0	8.0	\$20	\$160	0.0	\$0	\$0	\$0	\$0	\$160
Bridge & tunnel inspection	0.0	0.0	\$0	\$0	0.0	\$0	\$0	\$1,300	\$0	\$1,300
Leaf, snow, mud, & debris removal	0.0	64.0	\$20	\$1,280	0.0	\$0	\$0	\$250	\$0	\$1,530
Signage & pavement marking repair***	0.0	2.0	\$20	\$40	0.0	\$0	\$0	\$300	\$0	\$340
Vegetation Management										
Mowing	0.0	50.0	\$20	\$1,000	0.0	\$0	\$0	\$0	\$0	\$1,000
Edging	0.0	50.0	\$20	\$1,000	0.0	\$0	\$0	\$0	\$0	\$1,000
Tree pruning & brush cutting	0.0	8.0	\$20	\$160	0.0	\$0	\$0	\$0	\$0	\$160
Fallen tree and branch removal	0.0	8.0	\$20	\$160	0.0	\$0	\$0	\$0	\$0	\$160
Standing hazard tree removal	0.0	8.0	\$20	\$160	0.0	\$0	\$0	\$0	\$0	\$160
Herbicide treatment	0.0	1.0	\$20	\$20	0.0	\$0	\$0	\$0	\$0	\$20
Trailheads										
Parking lot surface repair	0.0	2.0	\$20	\$40	0.0	\$0	\$0	\$0	\$0	\$40
Trash removal	0.0	0.0	\$0	\$0	0.0	\$0	\$0	\$0	\$0	\$0
Landscape maintenance	0.0	0.0	\$0	\$0	0.0	\$0	\$0	\$0	\$0	\$0
Bathroom cleaning & repairs	0.0	0.0	\$0	\$0	0.0	\$0	\$0	\$0	\$0	\$0
Trail information kiosk repairs	0.0	1.0	\$20	\$20	0.0	\$0	\$0	\$0	\$0	\$20
Trailside Amenities										
Gate, fence/railing, bollard, & bench repairs	0.0	25.0	\$20	\$500	0.0	\$0	\$0	\$0	\$0	\$500
General Maintenance										
Litter removal	0.0	38.0	\$20	\$760	0.0	\$0	\$0	\$0	\$0	\$760
Graffiti removal	0.0	2.0	\$20	\$40	0.0	\$0	\$0	\$0	\$0	\$40

*Trail / parking lot surface repair includes filling pot holes, dragging/grading, crack sealing, de-berming, etc. Essentially any repair to the trail or parking lot surface.

**Equipment rates may include rates for rented or owned equipment. Owned equipment may include the cost of operation and maintenance, but not depreciation.

***Don't include map printing or sign design costs.

**** Volunteer labor rates vary by state and year. Volunteers may also include mandated community service personnel

Total Maintenance Costs	\$7,550
Average Maintenance Costs Per Mile	\$7,550
Volunteer Labor Rate****	\$24.69
Total Volunteer Contribution	\$0.00

Maintenance Activity	Volunteer Hours	Staff Hours	Staff Rate	Total Labor Cost	Equipment Hours	Equipment Hourly Rate**	Total Equipment Costs	Contracted Services Cost	Material Costs	Total Costs
Trailside Amenities										
Gate, fence/railing, bollard, & bench repairs	0.0	25.0	\$20	\$500	0.0	\$0	\$0	\$0	\$0	\$500



Maintenance Activity	Volunteer Hours	Staff Hours	Staff Rate	Total Labor Cost	Equipment Hours	Equipment Hourly Rate**	Total Equipment Costs	Contracted Services Cost	Material Costs	Total Costs
Trailside Amenities										
Gate, fence/railing, bollard, & bench repairs	0.0	25.0	\$20	\$500	0.0	\$0	\$0	\$0	\$0	\$500



Maintenance Activity	Volunteer Hours	Staff Hours	Staff Rate	Total Labor Cost	Equipment Hours	Equipment Hourly Rate**	Total Equipment Costs	Contracted Services Cost	Material Costs	Total Costs
Trailside Amenities										
Gate, fence/railing, bollard, & bench repairs	0.0	25.0	\$20	\$500	0.0	\$0	\$0	\$0	\$0	\$500



Maintenance Activity	Volunteer Hours	Staff Hours	Staff Rate	Total Labor Cost	Equipment Hours	Equipment Hourly Rate**	Total Equipment Costs	Contracted Services Cost	Material Costs	Total Costs
Trailside Amenities										
Gate, fence/railing, bollard, & bench repairs	0.0	25.0	\$20	\$500	0.0	\$0	\$0	\$0	\$0	\$500



Maintenance Activity	Volunteer Hours	Staff Hours	Staff Rate	Total Labor Cost	Equipment Hours	Equipment Hourly Rate**	Total Equipment Costs	Contracted Services Cost	Material Costs	Total Costs
Trailside Amenities										
Gate, fence/railing, bollard, & bench repairs	0.0	25.0	\$20	\$500	0.0	\$0	\$0	\$0	\$0	\$500



Gravel Trail, Rural Setting

Trail Name:	Armstrong Trail
Trail Length (miles):	36

Maintenance Activity	Volunteer Hours	Staff Hours	Staff Rate	Total Labor Cost	Equipment Hours	Equipment Hourly Rate**	Total Equipment Costs	Contracted Services Cost	Material Costs	Total Costs
Trail Surface & Infrastructure										
Trail surface repair*	70.0	7.0	\$33	\$231	70.0	\$11	\$770	\$0	\$0	\$0
Trail shoulder stabilization & repair	140.0	14.0	\$33	\$462	140.0	\$11	\$0	\$0	\$0	\$462
Inspection & clearing of drainage structures	280.0	28.0	\$33	\$924	280.0	\$11	\$3,080	\$0	\$0	\$4,004
Bridge & tunnel inspection	0.0	8.0	\$33	\$264	0.0	\$0	\$0	\$10,000	\$0	\$10,264
Leaf, snow, mud, & debris removal	70.0	7.0	\$33	\$231	70.0	\$11	\$770	\$0	\$0	\$1,001
Signage & pavement marking repair***	10.0	1.0	\$33	\$33	0.0	\$0	\$0	\$0	\$0	\$33
Vegetation Management										
Mowing	200.0	20.0	\$33	\$660	200.0	\$11	\$2,200	\$0	\$0	\$2,860
Edging	20.0	2.0	\$33	\$66	20.0	\$1	\$20	\$0	\$0	\$86
Tree pruning & brush cutting	600.0	60.0	\$33	\$1,980	600.0	\$5	\$3,000	\$5,000	\$0	\$9,980
Fallen tree and branch removal	140.0	14.0	\$33	\$462	140.0	\$5	\$700	\$0	\$0	\$1,162
Standing hazard tree removal	36.0	4.0	\$33	\$132	36.0	\$5	\$180	\$0	\$0	\$312
Herbicide treatment	0.0	0.0	\$33	\$0	0.0	\$0	\$0	\$2,000	\$0	\$2,000
Trailheads										
Parking lot surface repair	8.0	0.0	\$33	\$0	8.0	\$11	\$88	\$0	\$0	\$88
Trash removal	8.0	0.0	\$33	\$0	8.0	\$0	\$0	\$100	\$0	\$100
Landscape maintenance	8.0	0.0	\$33	\$0	8.0	\$11	\$0	\$0	\$0	\$0
Bathroom cleaning & repairs	0.0	0.0	\$33	\$0	0.0	\$0	\$0	\$3,000	\$0	\$3,000
Trail information kiosk repairs	10.0	0.0	\$33	\$0	0.0	\$0	\$0	\$0	\$0	\$0
Trailside Amenities										
Gate, fence/railing, bollard, & bench repairs	100.0	10.0	\$33	\$330	0.0	\$0	\$0	\$0	\$0	\$330
General Maintenance										
Litter removal	200.0	20.0	\$33	\$660	2.0	\$11	\$22	\$0	\$0	\$682
Graffiti removal	8.0	0.0	\$33	\$0	0.0	\$0	\$0	\$0	\$0	\$0

*Trail / parking lot surface repair includes filling pot holes, dragging/grading, crack sealing, de-berming, etc. Essentially any repair to the trail or parking lot surface.

**Equipment rates may include rates for rented or owned equipment. Owned equipment may include the cost of operation and maintenance, but not depreciation.

***Don't include map printing or sign design costs.

**** Volunteer labor rates vary by state and year. Volunteers may also include mandated community service personnel

Total Maintenance Costs	\$36,364
Average Maintenance Costs Per Mile	\$1,010
Volunteer Labor Rate****	\$24.69
Total Volunteer Contribution	\$47,108.52

Gravel Trail, Rural Setting

Trail Name:	Armstrong Trail
Trail Length (miles):	36

Maintenance Activity	Volunteer Hours	Staff Hours	Staff Rate	Total Labor Cost	Equipment Hours	Equipment Hourly Rate**	Total Equipment Costs	Contracted Services Cost	Material Costs	Total Costs
Trail Surface & Infrastructure										
Trail surface repair*	70.0	7.0	\$33	\$231	70.0	\$11	\$770	\$0	\$0	\$0
Trail shoulder stabilization & repair	140.0	14.0	\$33	\$462	140.0	\$11	\$0	\$0	\$0	\$462
Inspection & clearing of drainage structures	280.0	28.0	\$33	\$924	280.0	\$11	\$3,080	\$0	\$0	\$4,004
Bridge & tunnel inspection	0.0	8.0	\$33	\$264	0.0	\$0	\$0	\$10,000	\$0	\$10,264
Leaf, snow, mud, & debris removal	70.0	7.0	\$33	\$231	70.0	\$11	\$770	\$0	\$0	\$1,001
Signage & pavement marking repair***	10.0	1.0	\$33	\$33	0.0	\$0	\$0	\$0	\$0	\$33
Vegetation Management										
Mowing	200.0	20.0	\$33	\$660	200.0	\$11	\$2,200	\$0	\$0	\$2,860
Edging	20.0	2.0	\$33	\$66	20.0	\$1	\$20	\$0	\$0	\$86
Tree pruning & brush cutting	600.0	60.0	\$33	\$1,980	600.0	\$5	\$3,000	\$5,000	\$0	\$9,980
Fallen tree and branch removal	140.0	14.0	\$33	\$462	140.0	\$5	\$700	\$0	\$0	\$1,162
Standing hazard tree removal	36.0	4.0	\$33	\$132	36.0	\$5	\$180	\$0	\$0	\$312
Herbicide treatment	0.0	0.0	\$33	\$0	0.0	\$0	\$0	\$2,000	\$0	\$2,000
Trailheads										
Parking lot surface repair	8.0	0.0	\$33	\$0	8.0	\$11	\$88	\$0	\$0	\$88
Trash removal	8.0	0.0	\$33	\$0	8.0	\$0	\$0	\$100	\$0	\$100
Landscape maintenance	8.0	0.0	\$33	\$0	8.0	\$11	\$0	\$0	\$0	\$0
Bathroom cleaning & repairs	0.0	0.0	\$33	\$0	0.0	\$0	\$0	\$3,000	\$0	\$3,000
Trail information kiosk repairs	10.0	0.0	\$33	\$0	0.0	\$0	\$0	\$0	\$0	\$0
Trailside Amenities										
Gate, fence/railing, bollard, & bench repairs	100.0	10.0	\$33	\$330	0.0	\$0	\$0	\$0	\$0	\$330
General Maintenance										
Litter removal	200.0	20.0	\$33	\$660	2.0	\$11	\$22	\$0	\$0	\$682
Graffiti removal	8.0	0.0	\$33	\$0	0.0	\$0	\$0	\$0	\$0	\$0

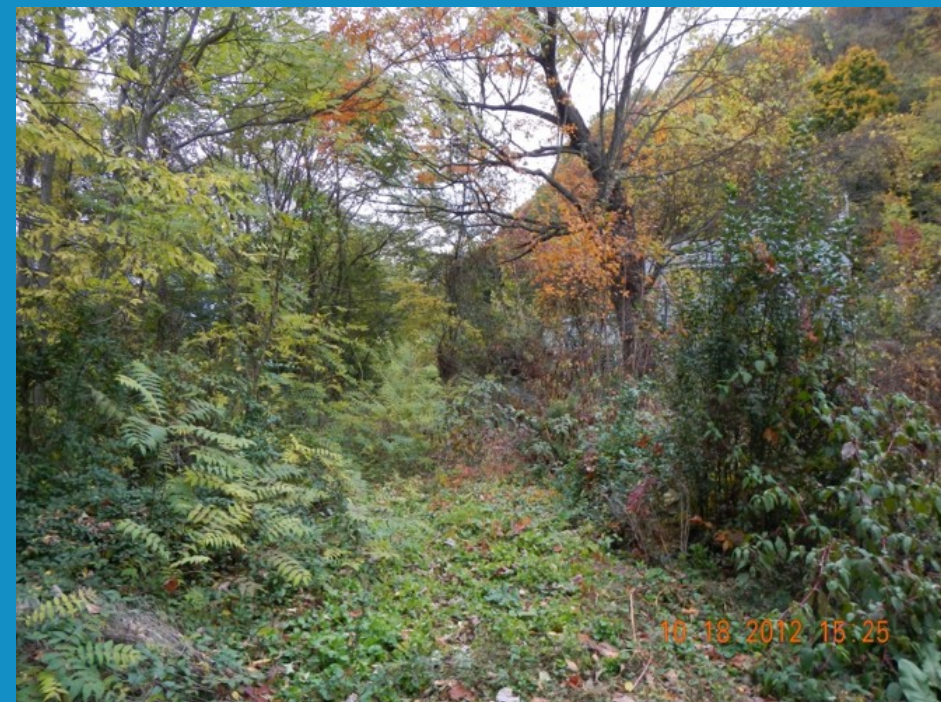
*Trail / parking lot surface repair includes filling pot holes, dragging/grading, crack sealing, de-berming, etc. Essentially any repair to the trail or parking lot surface.

**Equipment rates may include rates for rented or owned equipment. Owned equipment may include the cost of operation and maintenance, but not depreciation.

***Don't include map printing or sign design costs.

**** Volunteer labor rates vary by state and year. Volunteers may also include mandated community service personnel

Total Maintenance Costs	\$36,364
Average Maintenance Costs Per Mile	\$1,010
Volunteer Labor Rate****	\$24.69
Total Volunteer Contribution	\$47,108.52



Maintenance Activity	Volunteer Hours	Staff Hours	Staff Rate	Total Labor Cost	Equipment Hours	Equipment Hourly Rate**	Total Equipment Costs	Contracted Services Cost	Material Costs	Total Costs
Trail Surface & Infrastructure										
Trail surface repair*	70.0	7.0	\$33	\$231	70.0	\$11	\$770	\$0	\$0	\$0



Maintenance Activity	Volunteer Hours	Staff Hours	Staff Rate	Total Labor Cost	Equipment Hours	Equipment Hourly Rate**	Total Equipment Costs	Contracted Services Cost	Material Costs	Total Costs
Trail Surface & Infrastructure										
Trail surface repair*	70.0	7.0	\$33	\$231	70.0	\$11	\$770	\$0	\$0	\$0



Maintenance Activity	Volunteer Hours	Staff Hours	Staff Rate	Total Labor Cost	Equipment Hours	Equipment Hourly Rate**	Total Equipment Costs	Contracted Services Cost	Material Costs	Total Costs
Trail Surface & Infrastructure										
Trail surface repair*	70.0	7.0	\$33	\$231	70.0	\$11	\$770	\$0	\$0	\$0



Maintenance Activity	Volunteer Hours	Staff Hours	Staff Rate	Total Labor Cost	Equipment Hours	Equipment Hourly Rate**	Total Equipment Costs	Contracted Services Cost	Material Costs	Total Costs
Trail Surface & Infrastructure										
Trail surface repair*	70.0	7.0	\$33	\$231	70.0	\$11	\$770	\$0	\$0	\$0



Gravel Trail, Rural Setting

Trail Name:	Armstrong Trail
Trail Length (miles):	36

Maintenance Activity	Volunteer Hours	Staff Hours	Staff Rate	Total Labor Cost	Equipment Hours	Equipment Hourly Rate**	Total Equipment Costs	Contracted Services Cost	Material Costs	Total Costs
Trail Surface & Infrastructure										
Trail surface repair*	70.0	7.0	\$33	\$231	70.0	\$11	\$770	\$0	\$0	\$0
Trail shoulder stabilization & repair	140.0	14.0	\$33	\$462	140.0	\$11	\$0	\$0	\$0	\$462
Inspection & clearing of drainage structures	280.0	28.0	\$33	\$924	280.0	\$11	\$3,080	\$0	\$0	\$4,004
Bridge & tunnel inspection	0.0	8.0	\$33	\$264	0.0	\$0	\$0	\$10,000	\$0	\$10,264
Leaf, snow, mud, & debris removal	70.0	7.0	\$33	\$231	70.0	\$11	\$770	\$0	\$0	\$1,001
Signage & pavement marking repair***	10.0	1.0	\$33	\$33	0.0	\$0	\$0	\$0	\$0	\$33
Vegetation Management										
Mowing	200.0	20.0	\$33	\$660	200.0	\$11	\$2,200	\$0	\$0	\$2,860
Edging	20.0	2.0	\$33	\$66	20.0	\$1	\$20	\$0	\$0	\$86
Tree pruning & brush cutting	600.0	60.0	\$33	\$1,980	600.0	\$5	\$3,000	\$5,000	\$0	\$9,980
Fallen tree and branch removal	140.0	14.0	\$33	\$462	140.0	\$5	\$700	\$0	\$0	\$1,162
Standing hazard tree removal	36.0	4.0	\$33	\$132	36.0	\$5	\$180	\$0	\$0	\$312
Herbicide treatment	0.0	0.0	\$33	\$0	0.0	\$0	\$0	\$2,000	\$0	\$2,000
Trailheads										
Parking lot surface repair	8.0	0.0	\$33	\$0	8.0	\$11	\$88	\$0	\$0	\$88
Trash removal	8.0	0.0	\$33	\$0	8.0	\$0	\$0	\$100	\$0	\$100
Landscape maintenance	8.0	0.0	\$33	\$0	8.0	\$11	\$0	\$0	\$0	\$0
Bathroom cleaning & repairs	0.0	0.0	\$33	\$0	0.0	\$0	\$0	\$3,000	\$0	\$3,000
Trail information kiosk repairs	10.0	0.0	\$33	\$0	0.0	\$0	\$0	\$0	\$0	\$0
Trailside Amenities										
Gate, fence/railing, bollard, & bench repairs	100.0	10.0	\$33	\$330	0.0	\$0	\$0	\$0	\$0	\$330
General Maintenance										
Litter removal	200.0	20.0	\$33	\$660	2.0	\$11	\$22	\$0	\$0	\$682
Graffiti removal	8.0	0.0	\$33	\$0	0.0	\$0	\$0	\$0	\$0	\$0

*Trail / parking lot surface repair includes filling pot holes, dragging/grading, crack sealing, de-berming, etc. Essentially any repair to the trail or parking lot surface.

**Equipment rates may include rates for rented or owned equipment. Owned equipment may include the cost of operation and maintenance, but not depreciation.

***Don't include map printing or sign design costs.

**** Volunteer labor rates vary by state and year. Volunteers may also include mandated community service personnel

Total Maintenance Costs	\$36,364
Average Maintenance Costs Per Mile	\$1,010
Volunteer Labor Rate****	\$24.69
Total Volunteer Contribution	\$47,108.52

Maintenance Activity	Volunteer Hours	Staff Hours	Staff Rate	Total Labor Cost	Equipment Hours	Equipment Hourly Rate**	Total Equipment Costs	Contracted Services Cost	Material Costs	Total Costs
Vegetation Management										
Mowing	200.0	20.0	\$33	\$660	200.0	\$11	\$2,200	\$0	\$0	\$2,860



Maintenance Activity	Volunteer Hours	Staff Hours	Staff Rate	Total Labor Cost	Equipment Hours	Equipment Hourly Rate**	Total Equipment Costs	Contracted Services Cost	Material Costs	Total Costs
Vegetation Management										
Mowing	200.0	20.0	\$33	\$660	200.0	\$11	\$2,200	\$0	\$0	\$2,860



Maintenance Activity	Volunteer Hours	Staff Hours	Staff Rate	Total Labor Cost	Equipment Hours	Equipment Hourly Rate**	Total Equipment Costs	Contracted Services Cost	Material Costs	Total Costs
Vegetation Management										
Mowing	200.0	20.0	\$33	\$660	200.0	\$11	\$2,200	\$0	\$0	\$2,860



Maintenance Activity	Volunteer Hours	Staff Hours	Staff Rate	Total Labor Cost	Equipment Hours	Equipment Hourly Rate**	Total Equipment Costs	Contracted Services Cost	Material Costs	Total Costs
Vegetation Management										
Mowing	200.0	20.0	\$33	\$660	200.0	\$11	\$2,200	\$0	\$0	\$2,860



Gravel Trail, Rural Setting

Trail Name:	Armstrong Trail
Trail Length (miles):	36

Maintenance Activity	Volunteer Hours	Staff Hours	Staff Rate	Total Labor Cost	Equipment Hours	Equipment Hourly Rate**	Total Equipment Costs	Contracted Services Cost	Material Costs	Total Costs
Trail Surface & Infrastructure										
Trail surface repair*	70.0	7.0	\$33	\$231	70.0	\$11	\$770	\$0	\$0	\$0
Trail shoulder stabilization & repair	140.0	14.0	\$33	\$462	140.0	\$11	\$0	\$0	\$0	\$462
Inspection & clearing of drainage structures	280.0	28.0	\$33	\$924	280.0	\$11	\$3,080	\$0	\$0	\$4,004
Bridge & tunnel inspection	0.0	8.0	\$33	\$264	0.0	\$0	\$0	\$10,000	\$0	\$10,264
Leaf, snow, mud, & debris removal	70.0	7.0	\$33	\$231	70.0	\$11	\$770	\$0	\$0	\$1,001
Signage & pavement marking repair***	10.0	1.0	\$33	\$33	0.0	\$0	\$0	\$0	\$0	\$33
Vegetation Management										
Mowing	200.0	20.0	\$33	\$660	200.0	\$11	\$2,200	\$0	\$0	\$2,860
Edging	20.0	2.0	\$33	\$66	20.0	\$1	\$20	\$0	\$0	\$86
Tree pruning & brush cutting	600.0	60.0	\$33	\$1,980	600.0	\$5	\$3,000	\$5,000	\$0	\$9,980
Fallen tree and branch removal	140.0	14.0	\$33	\$462	140.0	\$5	\$700	\$0	\$0	\$1,162
Standing hazard tree removal	36.0	4.0	\$33	\$132	36.0	\$5	\$180	\$0	\$0	\$312
Herbicide treatment	0.0	0.0	\$33	\$0	0.0	\$0	\$0	\$2,000	\$0	\$2,000
Trailheads										
Parking lot surface repair	8.0	0.0	\$33	\$0	8.0	\$11	\$88	\$0	\$0	\$88
Trash removal	8.0	0.0	\$33	\$0	8.0	\$0	\$0	\$100	\$0	\$100
Landscape maintenance	8.0	0.0	\$33	\$0	8.0	\$11	\$0	\$0	\$0	\$0
Bathroom cleaning & repairs	0.0	0.0	\$33	\$0	0.0	\$0	\$0	\$3,000	\$0	\$3,000
Trail information kiosk repairs	10.0	0.0	\$33	\$0	0.0	\$0	\$0	\$0	\$0	\$0
Trailside Amenities										
Gate, fence/railing, bollard, & bench repairs	100.0	10.0	\$33	\$330	0.0	\$0	\$0	\$0	\$0	\$330
General Maintenance										
Litter removal	200.0	20.0	\$33	\$660	2.0	\$11	\$22	\$0	\$0	\$682
Graffiti removal	8.0	0.0	\$33	\$0	0.0	\$0	\$0	\$0	\$0	\$0

*Trail / parking lot surface repair includes filling pot holes, dragging/grading, crack sealing, de-berming, etc. Essentially any repair to the trail or parking lot surface.

**Equipment rates may include rates for rented or owned equipment. Owned equipment may include the cost of operation and maintenance, but not depreciation.

***Don't include map printing or sign design costs.

**** Volunteer labor rates vary by state and year. Volunteers may also include mandated community service personnel

Total Maintenance Costs	\$36,364
Average Maintenance Costs Per Mile	\$1,010
Volunteer Labor Rate****	\$24.69
Total Volunteer Contribution	\$47,108.52



15 IMG_0440.MOV



Maintenance Activity	Volunteer Hours	Staff Hours	Staff Rate	Total Labor Cost	Equipment Hours	Equipment Hourly Rate**	Total Equipment Costs	Contracted Services Cost	Material Costs	Total Costs
Trail Surface & Infrastructure										
Bridge & tunnel inspection	0.0	8.0	\$33	\$264	0.0	\$0	\$0	\$10,000	\$0	\$10,264
Leaf, snow, mud, & debris removal	70.0	7.0	\$33	\$231	70.0	\$11	\$770	\$0	\$0	\$1,001

