

Traversing the Great Ledge

How Climbers Gained Access to One of New Netherlands' Most Imposing Landscapes



Casey Holzworth – Regional Natural Resource Steward



NOVI BELGII
NOVAE ANGLIÆ NEC NON
PARTIS
VIRGINIÆ TABULA
multis in locis emendata
Nuncius apud Petrum Blaeuw hinc.





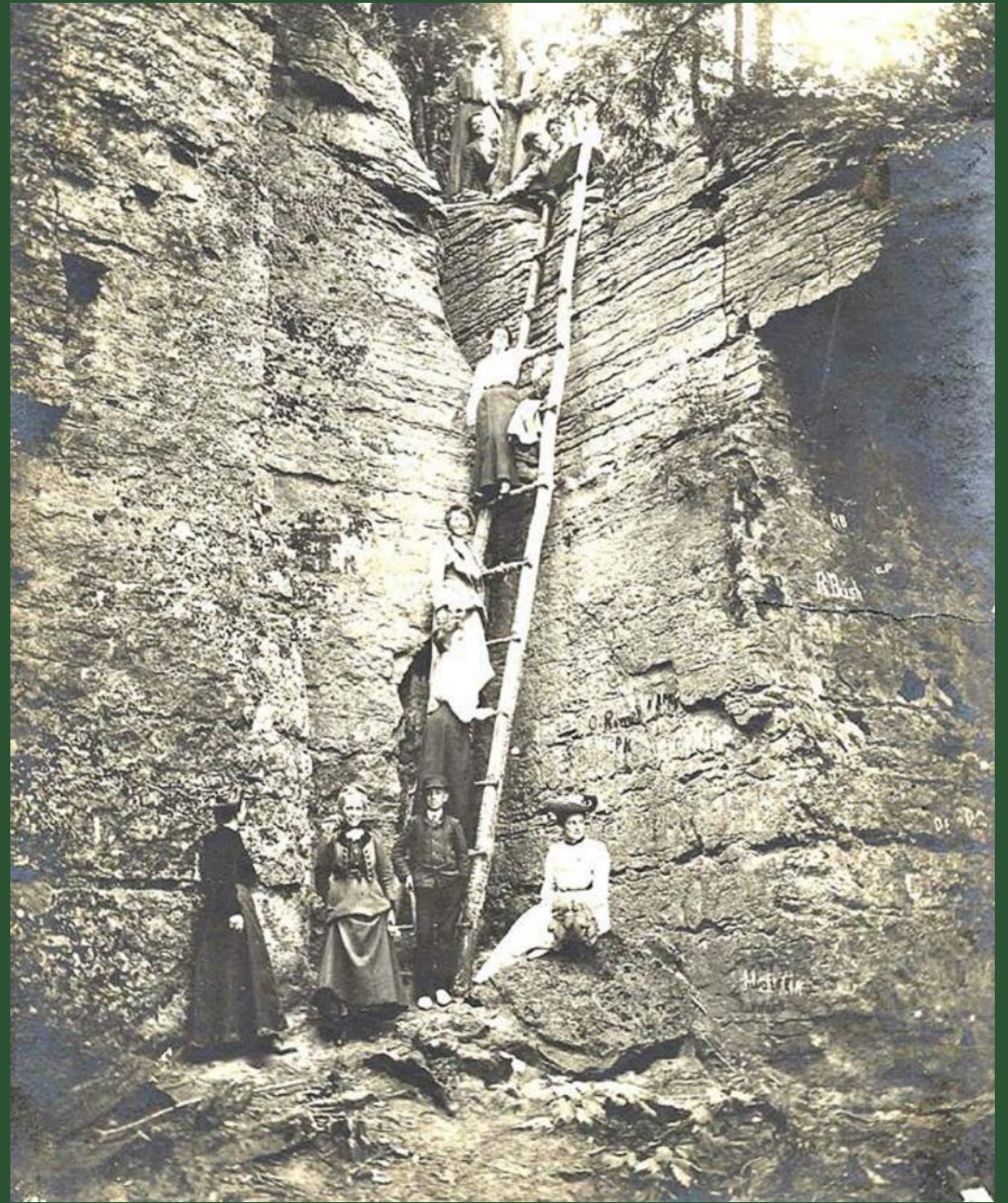
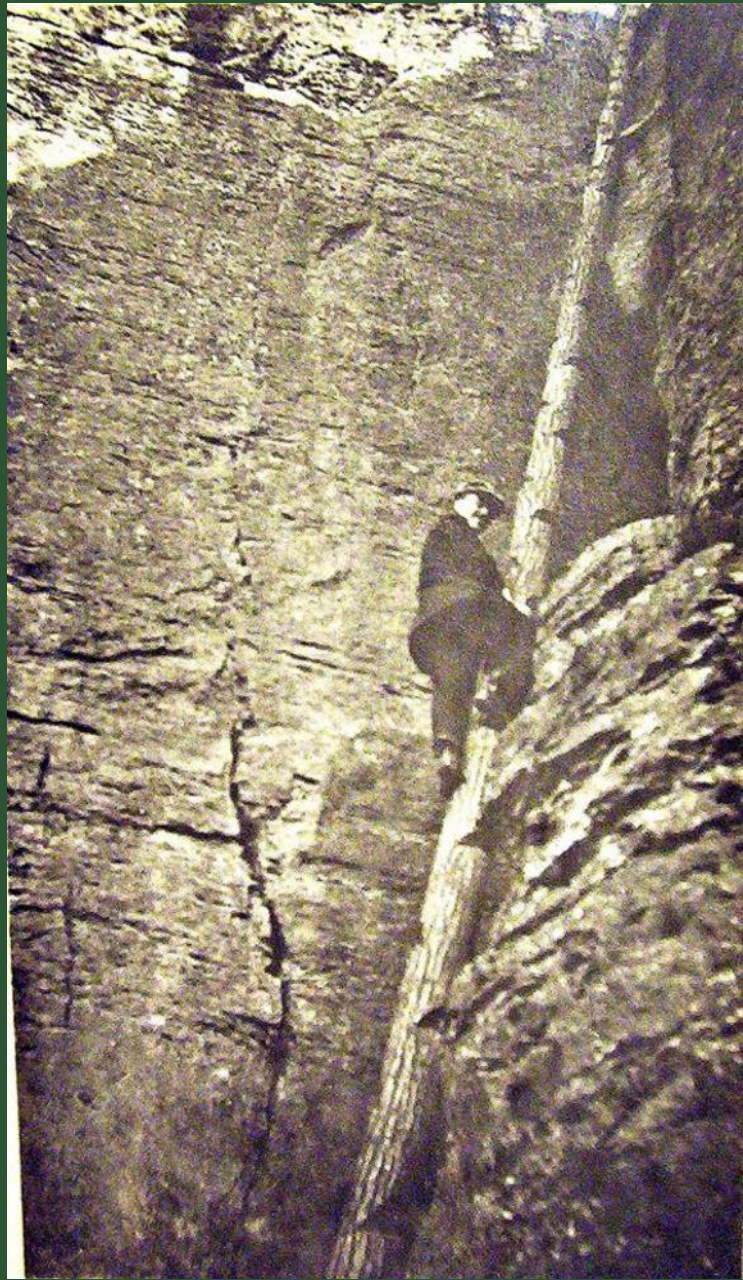


IN MEMORY OF
THOSE PIONEER GEOLOGISTS
WHOSE RESEARCHES IN THE
HELDERBERGS FROM 1819 TO 1850
MADE THIS REGION CLASSIC
GROUND. AMONG THEM

AMOS EATON
THE JOHN GEBHARDS, SR. & JR.
JAMES HALL
WILLIAM W. MATHER
LARDNER VANUXEM
JAMES EIGHTS
SIR CHARLES LYELL
BENJAMIN SILLIMAN
JAMES D. DANA
HENRY D. ROGERS
WILLIAM B. ROGERS
FERDINAND ROEMER
EDOUARD DE VERNEUIL
LOUIS AGASSIZ
EDOUARD DESOR
SIR WILLIAM E. LOGAN

PLACED BY
TAWASENTHA CHAPTER, N.S. D.A.R.
AND THE STATE OF NEW YORK
IN THE YEAR 1933







PD Photography






Thacl Close Tha
 posted Fel By Don Rittner on February 2

f t e p

Close Thacher Park? D

It's ironic that standing complex. This is the sa public and taking away



No more w


A View From The Escarpment
 Don Rittner.

timesunion Sections

A monumental
 Visitors suggest mult state's financial woes

by scott waldman Staff writ

e f t p



SECTIONS HOME SEARCH

The New York Times

Shutdown, Deterioration, and Then a Reprieve

By KATHARINE Q. SEELYE MAY 31, 2010



Assemblyman Tim Gordon made a point two weeks ago at John Boyd Thacher State Park.
 Assembly Photography

N.Y. state parks are appealing to adventure sports

By Michael Virtanen
Associated Press

Posted
1/8/2014 5:30 AM

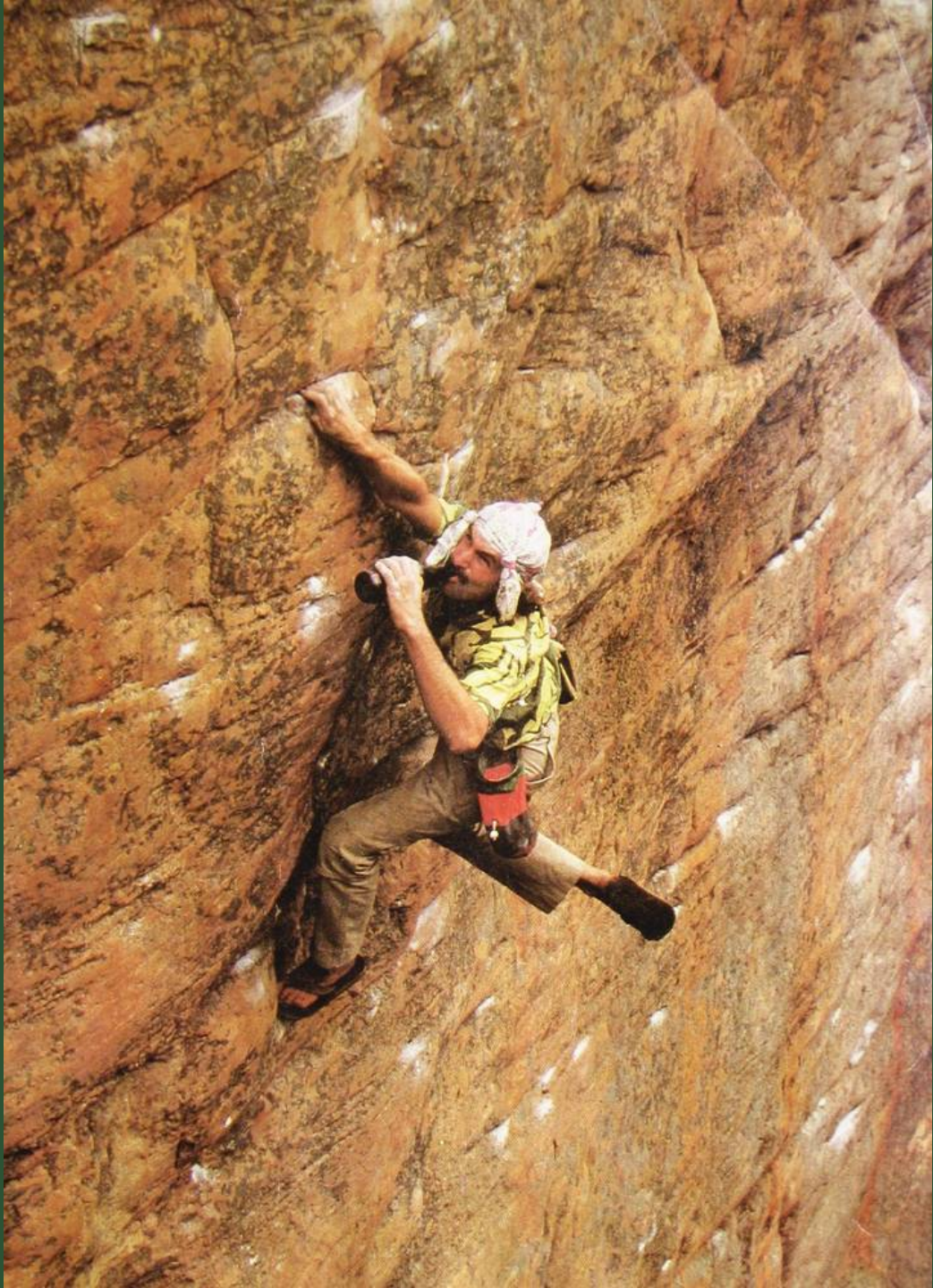


Ice forms on a cliff face along the Indian Ladder trail at John Boyd Thacher State Park in Guilderland, N.Y. The park, which sprawls along a cliff southwest of Albany, plans to let the rock climbers and spelunkers come, the latest outdoor adventures in a park system that already hosts everything from 100K runs to windsurfing in the Atlantic. (Associated Press)









DANGER

**DO NOT CROSS FENCE
STEEP DROP OFF
VIOLATORS WILL BE PROSECUTED**





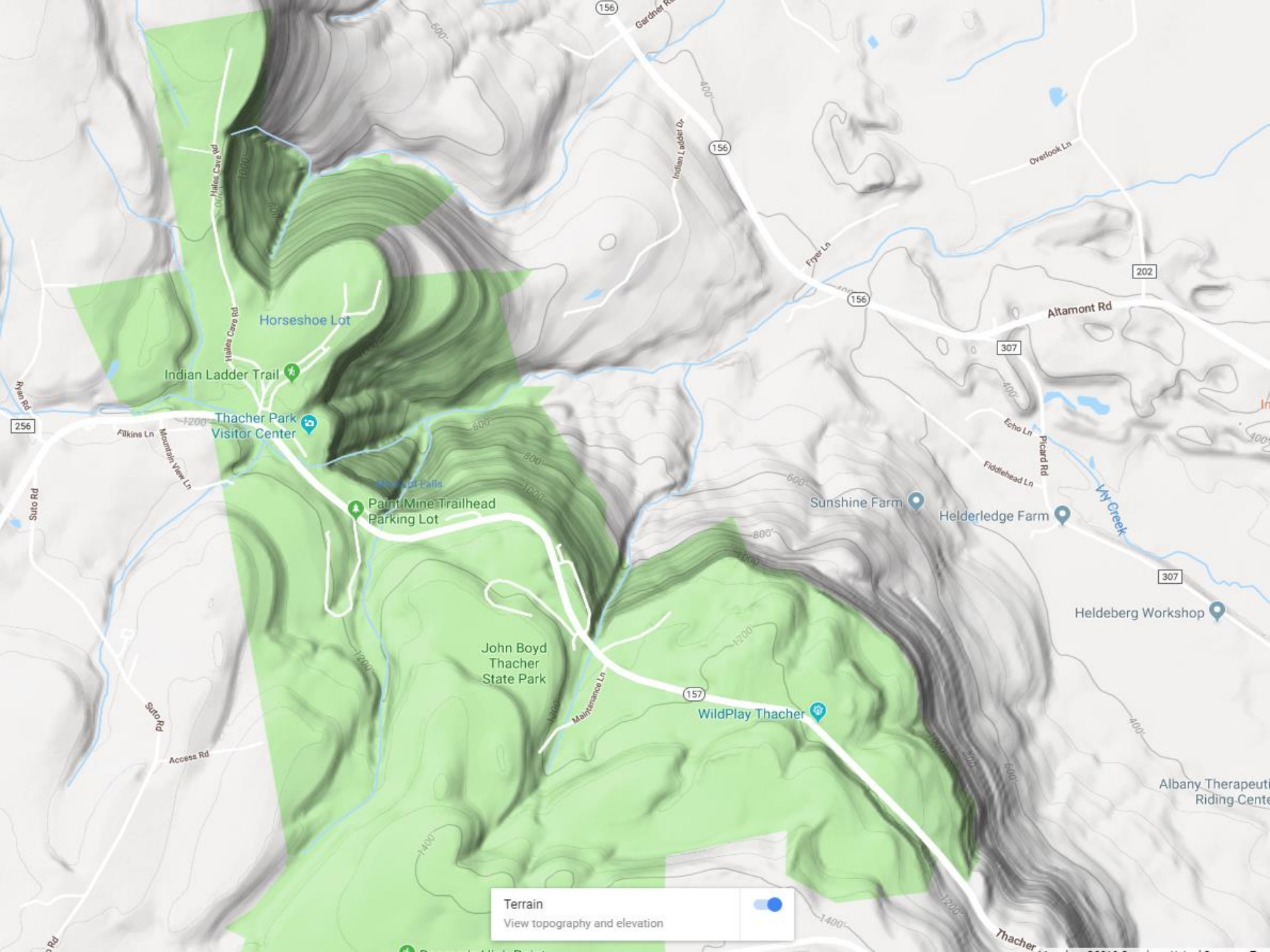




Thacher Climbing Coalition™







Terrain
View topography and elevation













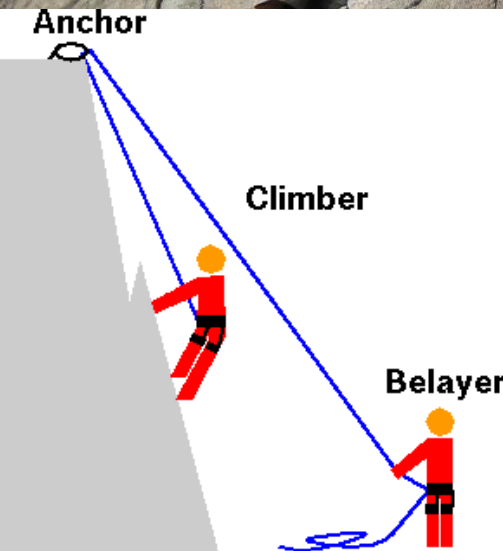
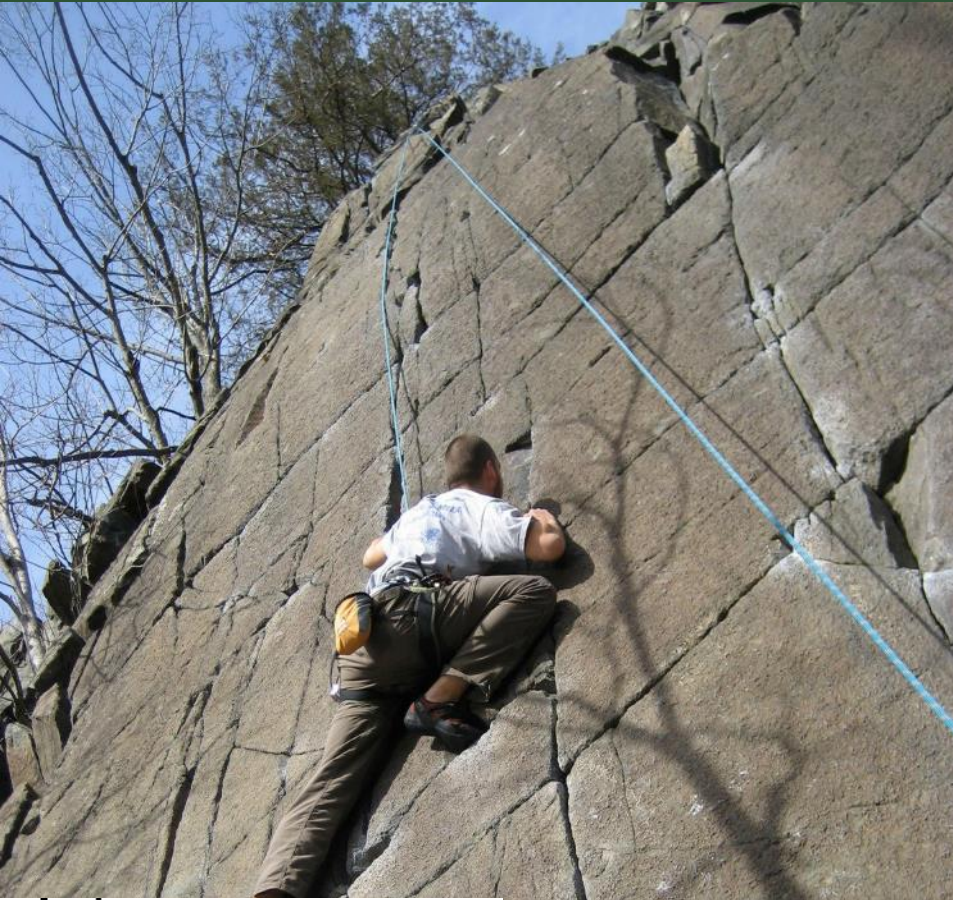




ACCA-ACC 2013

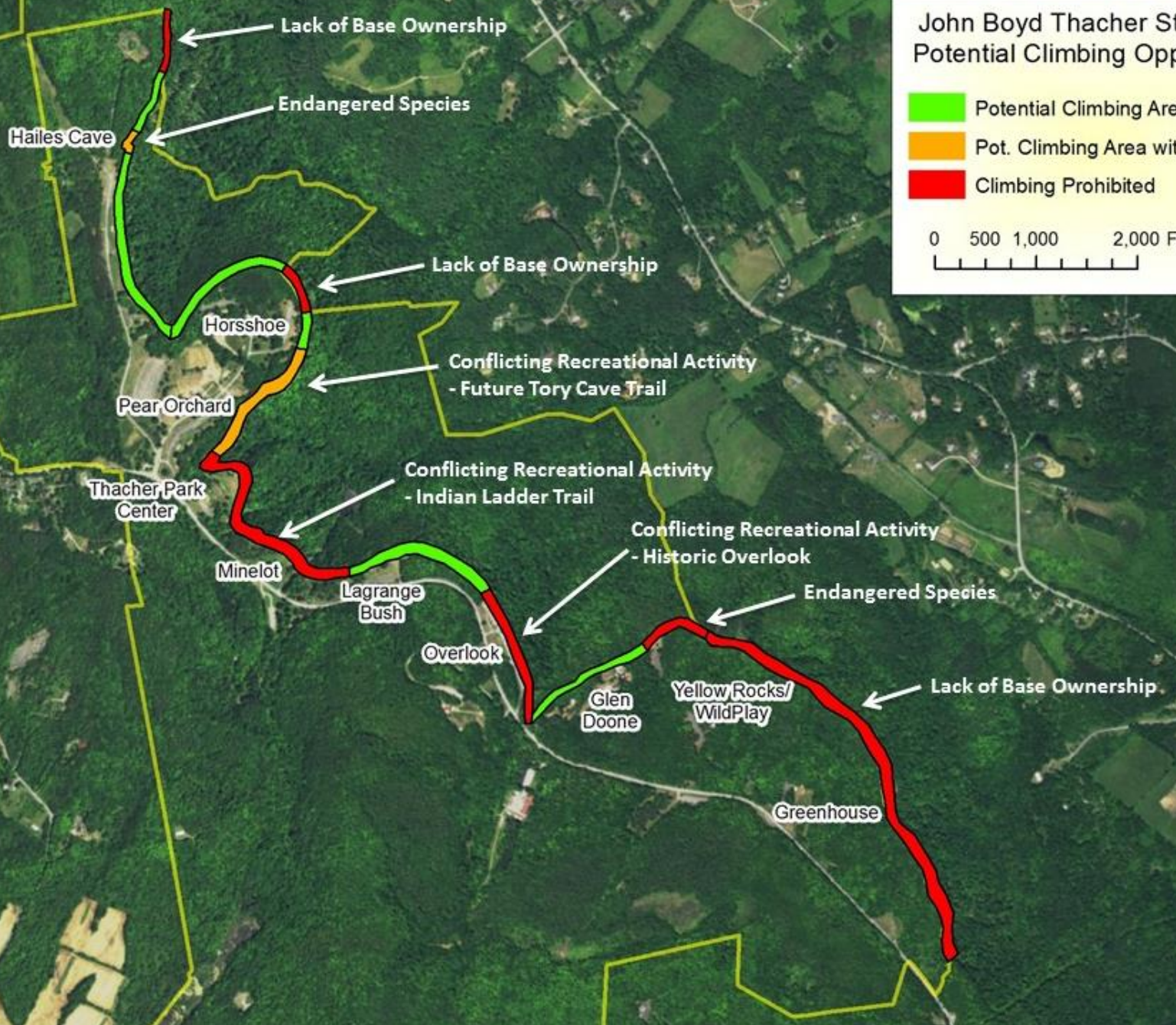
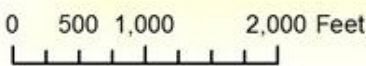




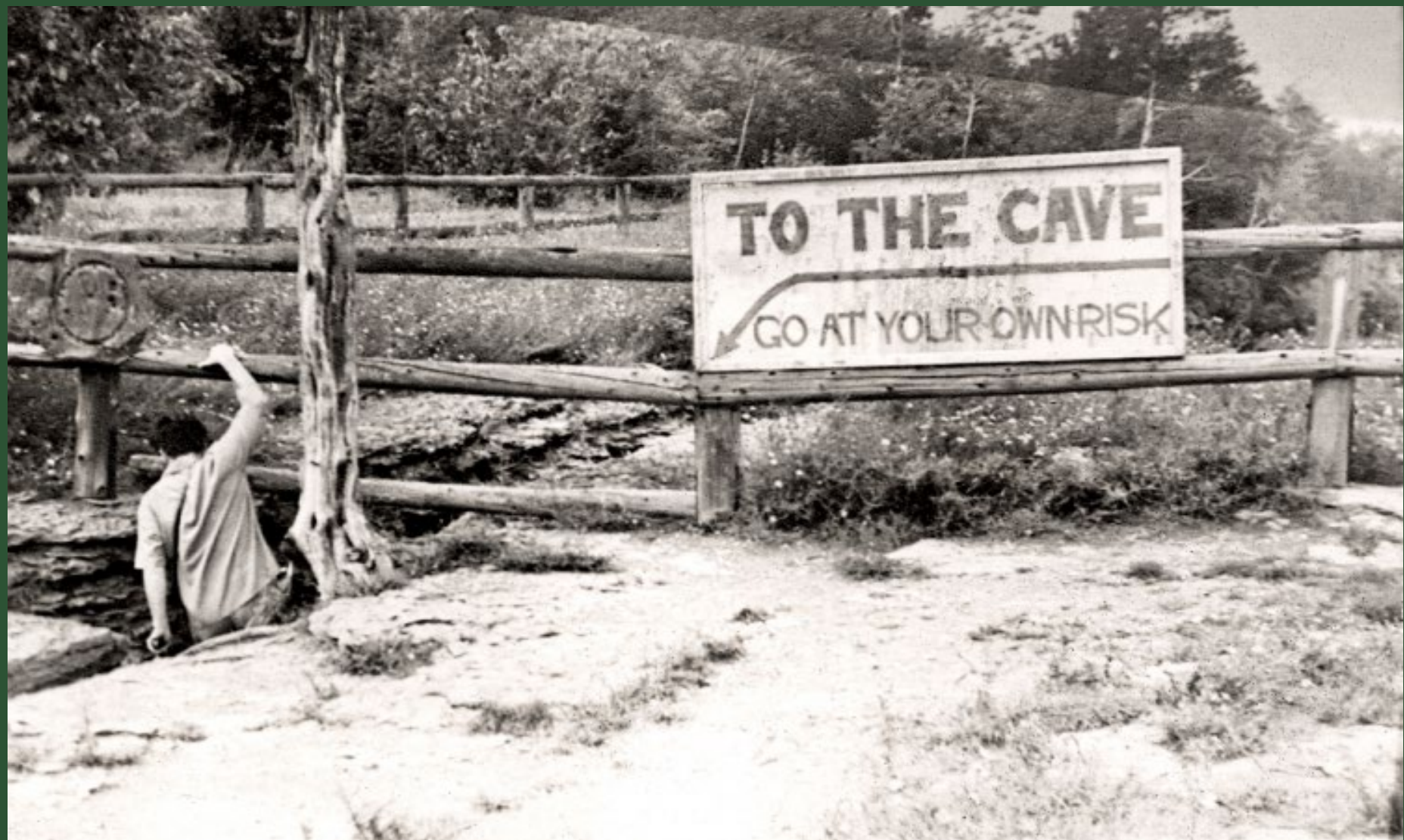


John Boyd Thacher State Park: Potential Climbing Opportunities

- █ Potential Climbing Area
- █ Pot. Climbing Area with Restrictions
- █ Climbing Prohibited



Source: Esri, DigitalGlobe, GeoEye, Earthstar Geographics, CNES/Airbus DS, USDA, USGS, AEX, Getmapping, Aerogrid, IGN, IGP, swisstopo, and the GIS User Community



KEEP OUT

DANGER
DO NOT CROSS FENCE
STEEP DROP OFF
VIOLATORS WILL BE PROSECUTED







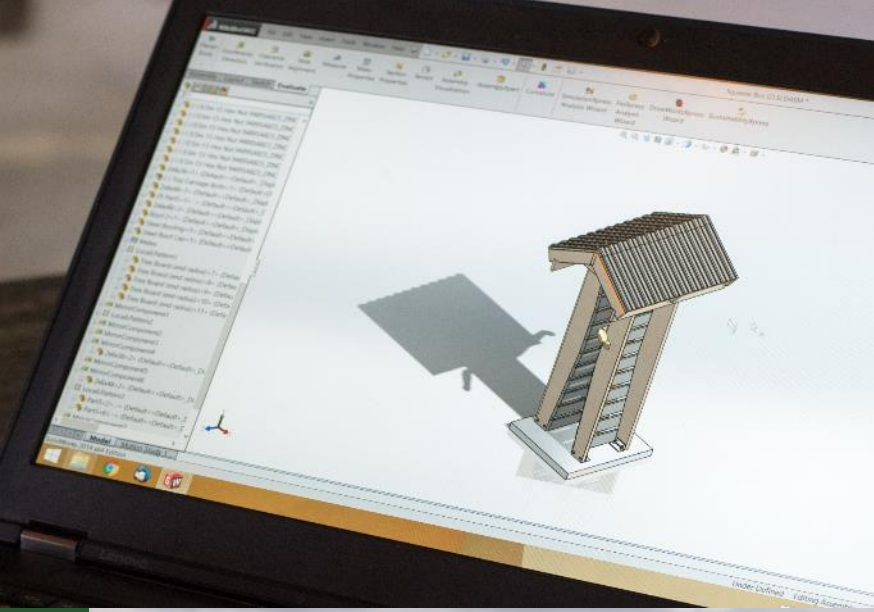












Squeeze Box

Built by Thacher Climbing Coalition

KEEP OUT

Rock Climbing Area Only

Park permit required
Climbers only beyond this point
No rappelling from the cliff top
No hiking access

If you do not fit through here you will not fit through Helen's Crvice, the access to the rock climbing area.

WARNING ROCK CLIMBING IS DANGEROUS

BE A SAFE TRAVELER
BE RESPONSIBLE

CLIMB AT YOUR OWN RISK

THE THACHER TRAILS SYSTEM HAS BEEN DESIGNATED AS A RECREATION AREA BY THE STATE OF MASSACHUSETTS. THE STATE DOES NOT WARRANT THE SAFETY OR SOUNDNESS OF THE ROCKS OR CLIFFS.

CLIMB AT YOUR OWN RISK







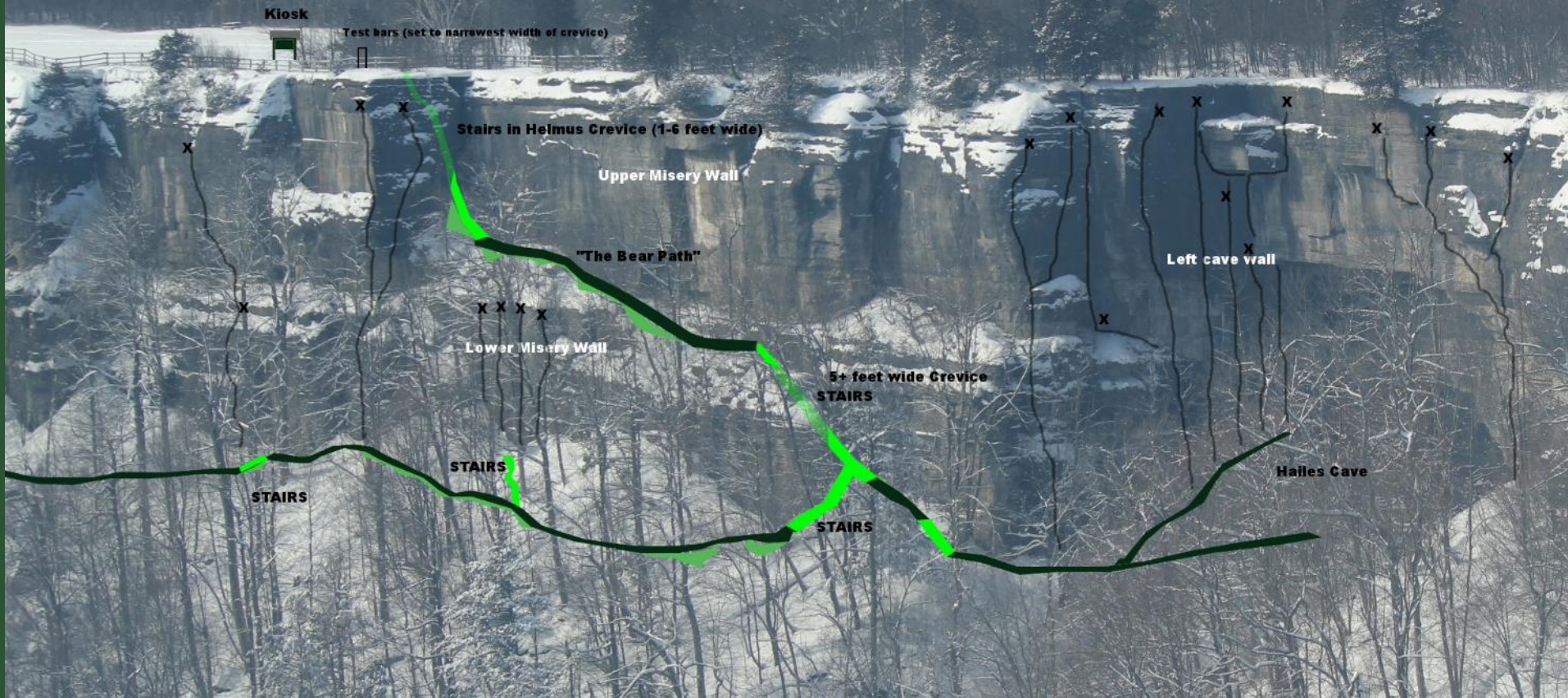
TRAIL WORK PLANNING:

Projected work areas.

Climbing routes marked are existing or projected

Document: 5/4/2016

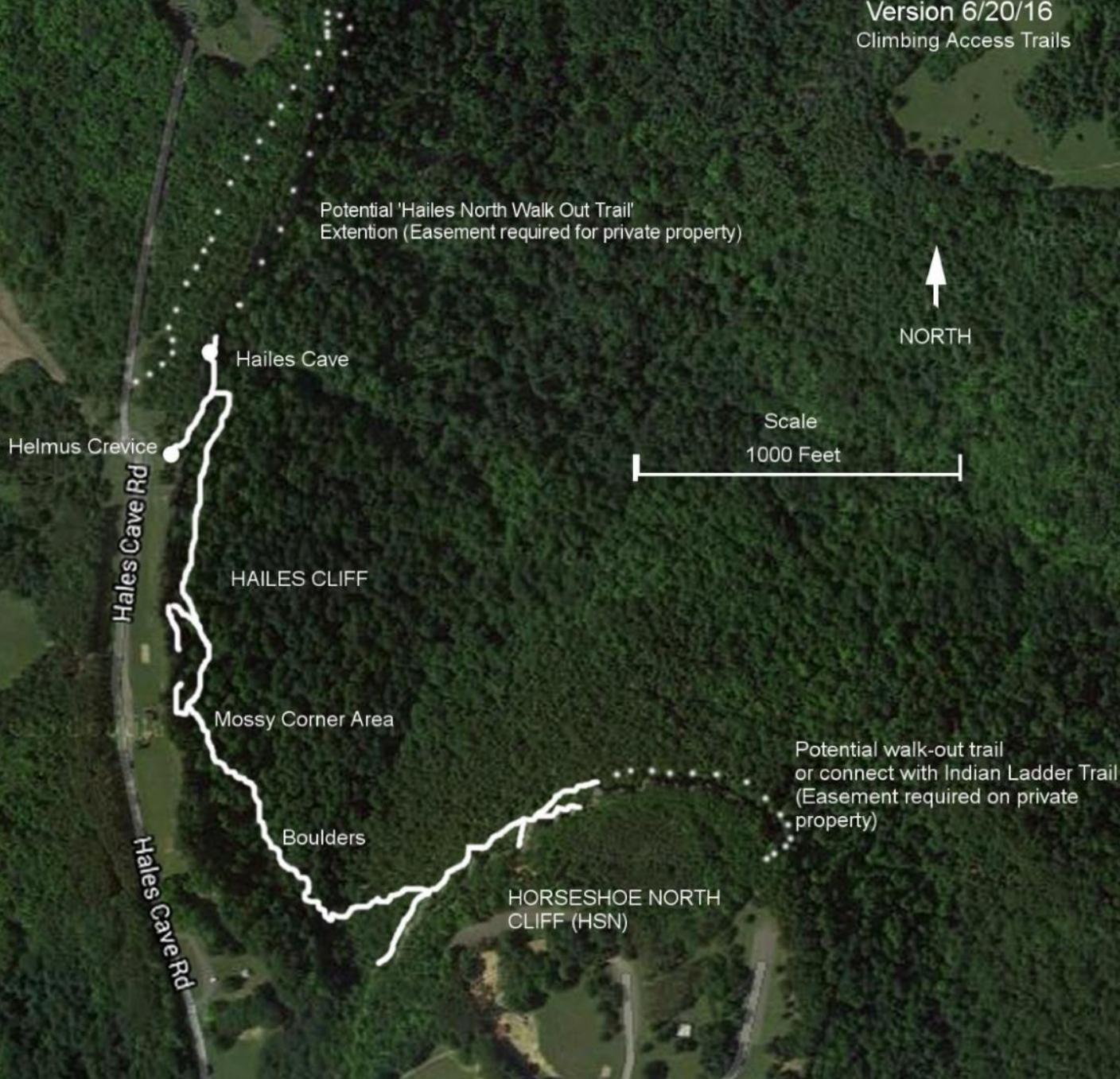
Author: TCC





MAP for DISCUSSION OF TRAIL PLANNING 2016

Version 6/20/16
Climbing Access Trails









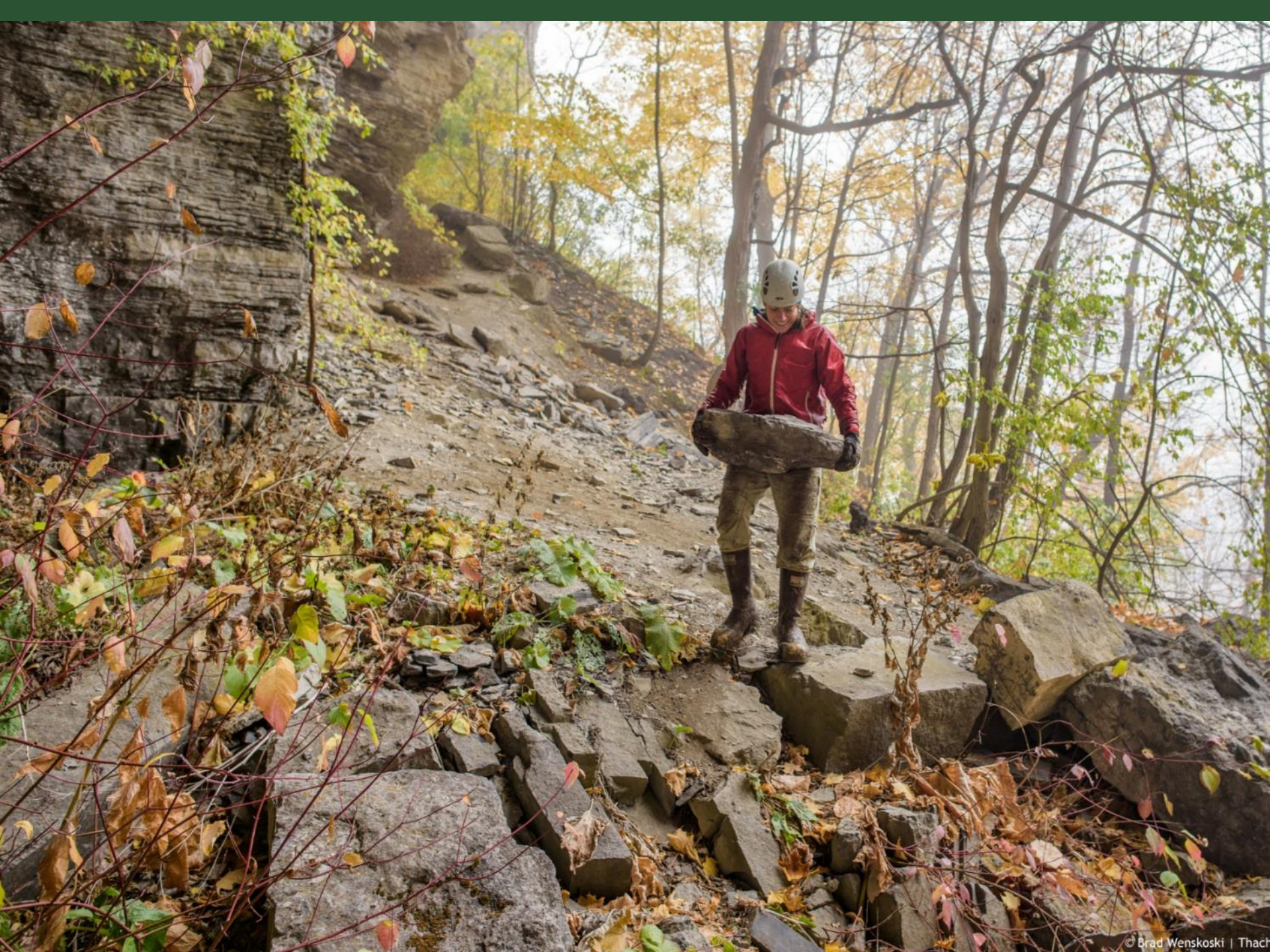






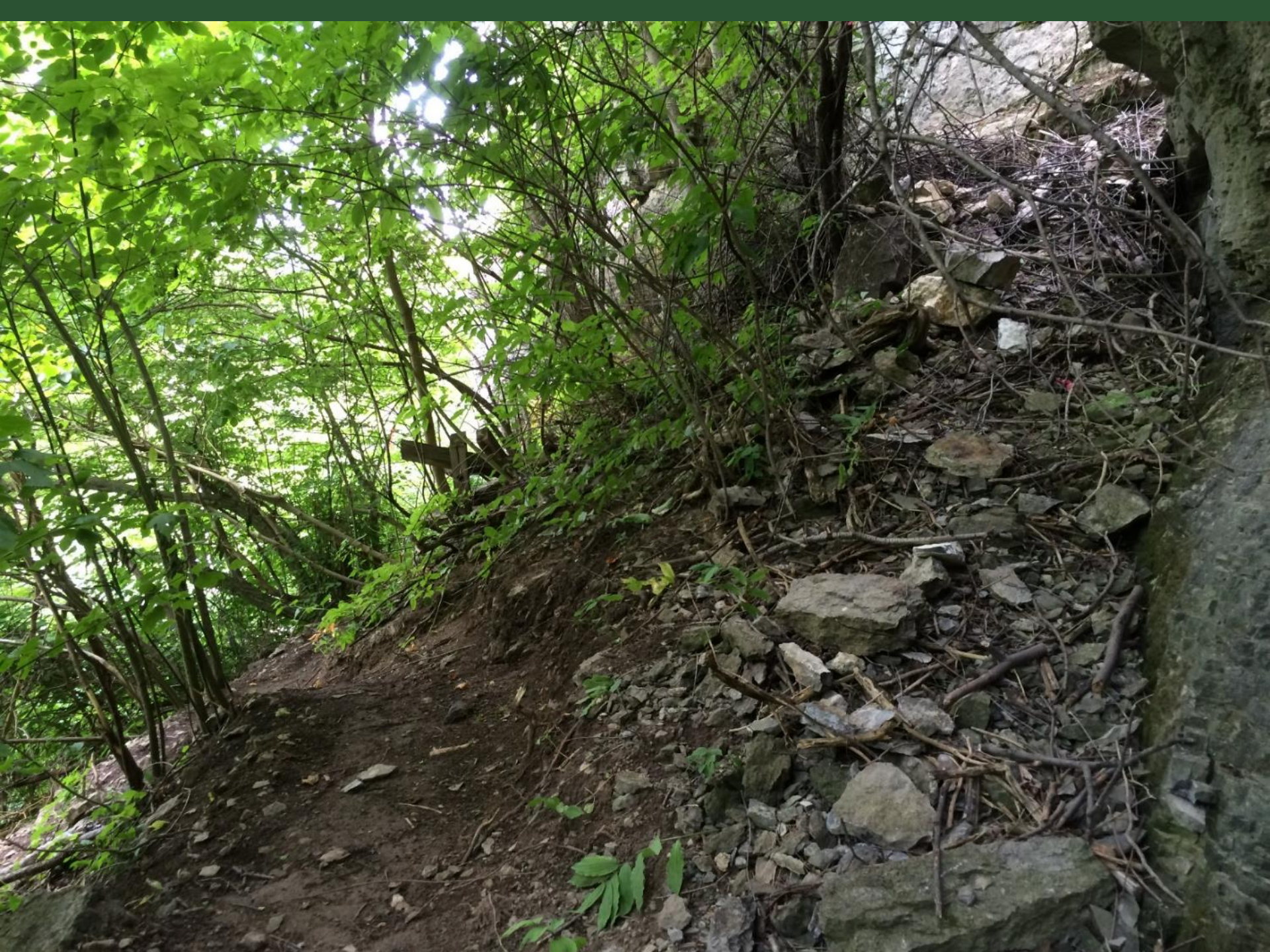












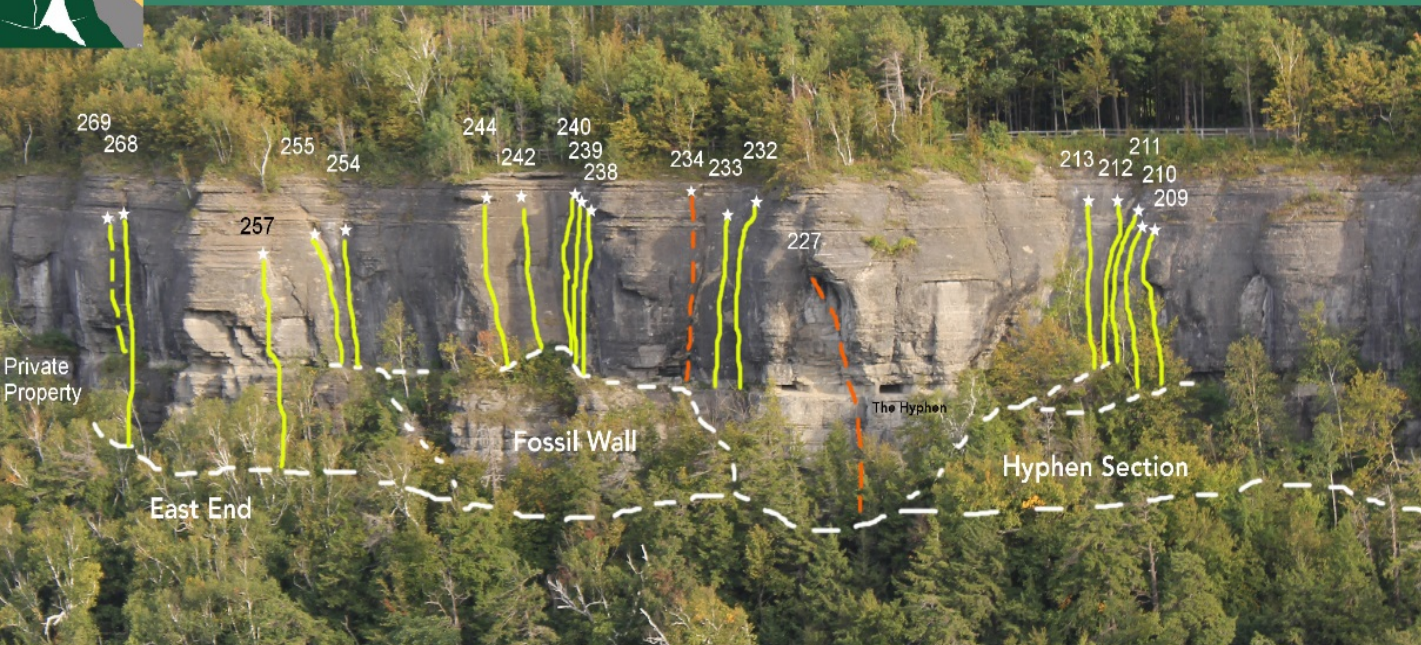






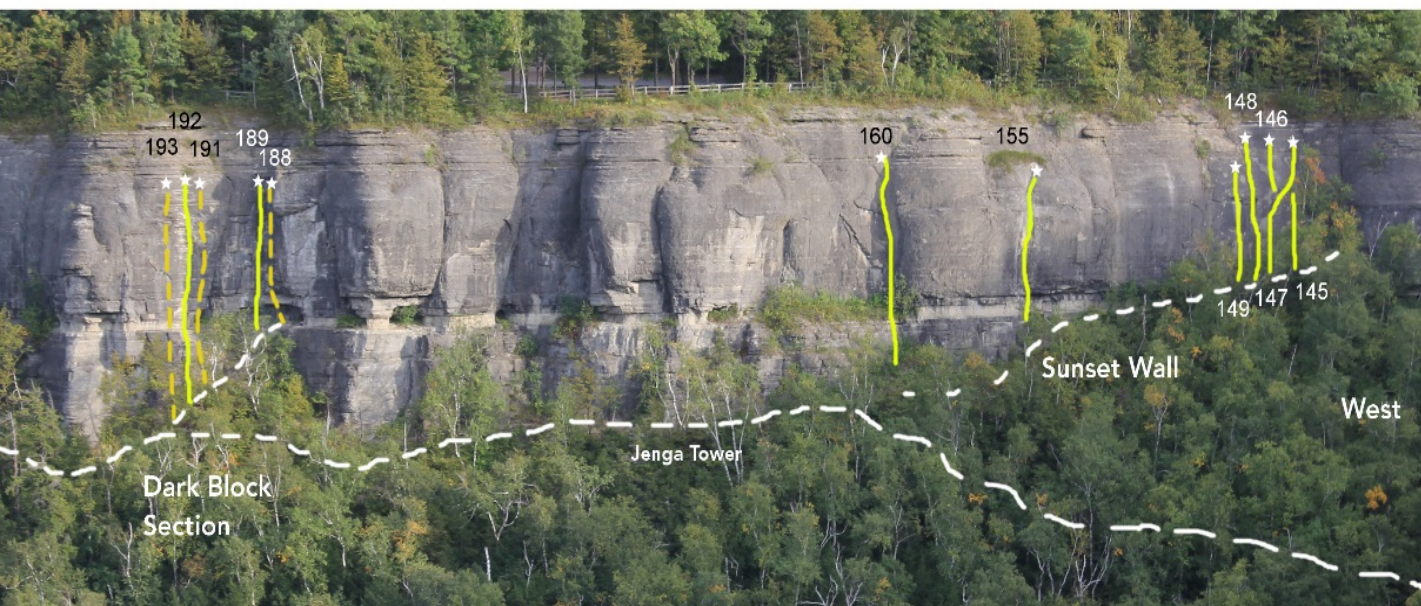
Horseshoe North (HSN)

working diagram 10/4/16



Routes East to West

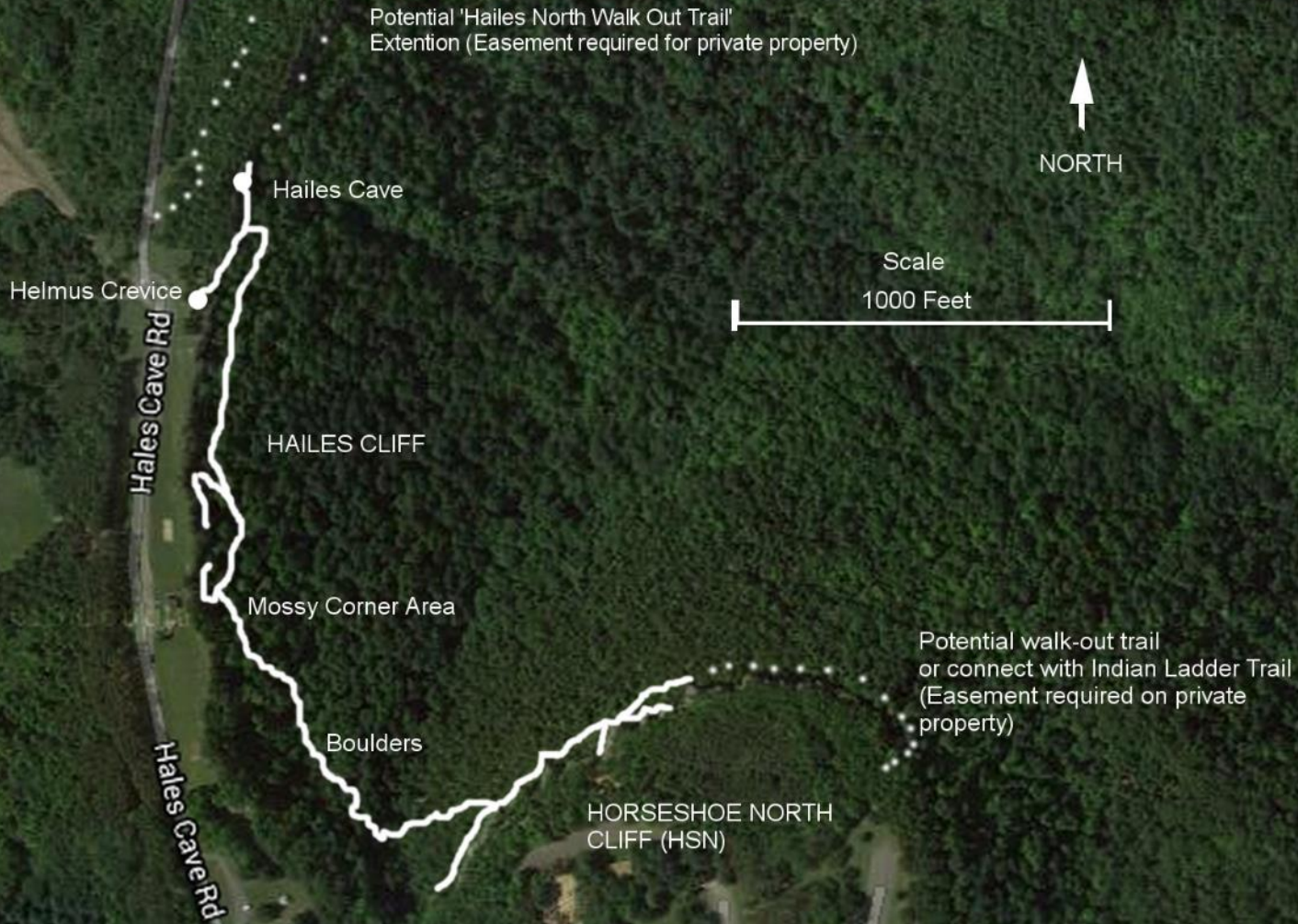
- 269. Starry Point (face) 5.10c
- 268. Kipu Krack (crack) 5.10a
- 257. Pearlvana (bulge) 5.11
- 255. tbd (face) 5.10a
- 254. tbd (crack) 5.8
- 244. Permian Extinction (face) 5.10d
- 242. Permanent Vacation (face) 5.11a
- 240. Crinoid Stem (dihedral) 5.9
- 239. Life Crusher (face) 5.11a
- 238. Kayah (arete) 5.9
- 234. tbd (bulge) 5.12
- 233. Tull Tunes (face) 5.10
- 232. Bexor (crack) 5.8
- 227. tbd (dihedral) 5.12
- 213. tbd (face) 5.11
- 212. Trylo Bite This (crack) 5.8
- 211. Hakuna Echinodermatata (face) 5.8
- 210. tbd (face) 5.10
- 209. tbd (roof) 5.9
- 193. tbd (face) 5.11
- 192. Dragon Kite (face) 5.10
- 191. tbd (face) 5.12
- 189. tbd (dihedral) 5.10
- 188. Tory Hole (crack) 5.10
- 160. Gallifrey (crack) 5.9
- 155. Mookie's Delight (crack) 5.9
- 149. Get the Baby Out of Here (face) 5.10a
- 148. Mokus Pokus (roof) 5.8
- 147. Rachel Boo (crack) 5.5
- 146. Rachel Boo variation 5.8
- 145. Stratergy (face) 5.11





MAP for DISCUSSION OF TRAIL PLANNING 2016

Version 6/20/16
Climbing Access Trails



Climbing!

NEW YORK'S THACHER STATE PARK OPENED TO CLIMBING!

128 Shares     

07/13/2017

We're thrilled to report that after five years of work, John Boyd Thacher State Park (aka, Thacher State Park) in New York has officially opened to climbing. Located just 20 minutes west of Albany, this new limestone sport climbing area is a great new destination for northeast climbers.



Thacher Climbing Coalition

posted Sep 21, 2016



Thacher State Park doesn't currently allow rock climbing -- but it will eventually, possibly not far in the future. And a group called the [Thacher Climbing Coalition](#) is working toward that day. From the group's about page:

The Thacher Climbing Coalition promotes the enjoyment and protection of our

What's All Over Albany?

All Over Albany is for interested and interesting people in New York's Capital Region. In other words, it's for you. It's kind of like having a smart, savvy friend who can help you find out what's up. Oh, and our friends call us AOA.

Search

Recently on All Over Albany

[Thank you!](#)

When we started AOA a decade ago we had no idea what was going to happen. And it turned out better than we could have... [\(more\)](#)

[Let's stay in touch](#)

This all feels like the last day of camp or something. And we're going to miss you all so much. But we'd like to stay... [\(more\)](#)

[A few things I think about this place](#)

Working on AOA over the past decade has been a life-changing experience for me and it's shaped the way I think about so many things.... [\(more\)](#)

[Albany tightened its rules for shoveling snowy sidewalks last winter -- so how'd that work out?](#)

If winter ever gets its act together and drops more snow on us, there will be sidewalks to shovel. And shortly after that, Albany



Thacher State Park: Northeast's Newest Sport Climbing Area



The Northeast's newest climbing area is officially open! Thacher State Park will become the first public sport climbing crag to officially open in New York State. As many climbers know sport climbing in this part of the country is few and far between. With New

Climbing Made Public: Sport Climbing Comes to Upstate New York at Thacher State Park

ALAN WECHSLER · SEP 24, 2018



Duanesburg native Whelan to receive climbing award

Whelan founded the Thacher Climbing Coalition

[Jennie Heyward](#) [@ByMichaelKelly](#) | September 21, 2018





Thacher Climbing Coalition

[About Us](#)

[Membership](#)

[Visit](#)

[News](#)

Visit Thacher – Season Open!

All climbers must visit the visitor center at least once and sign a yearly waiver good for the season.
This

[CLICK TO START](#)