

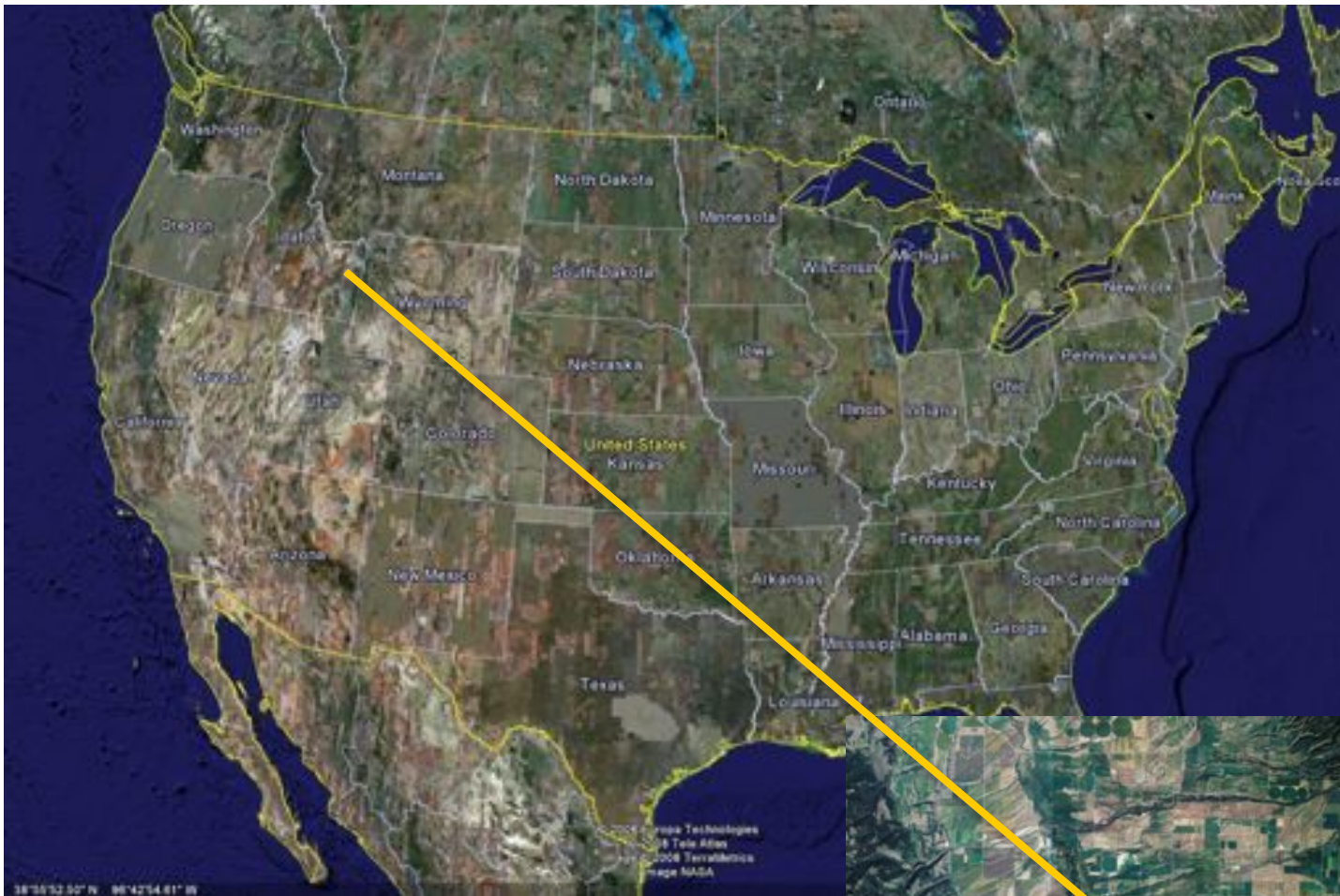


TETON VALLEY



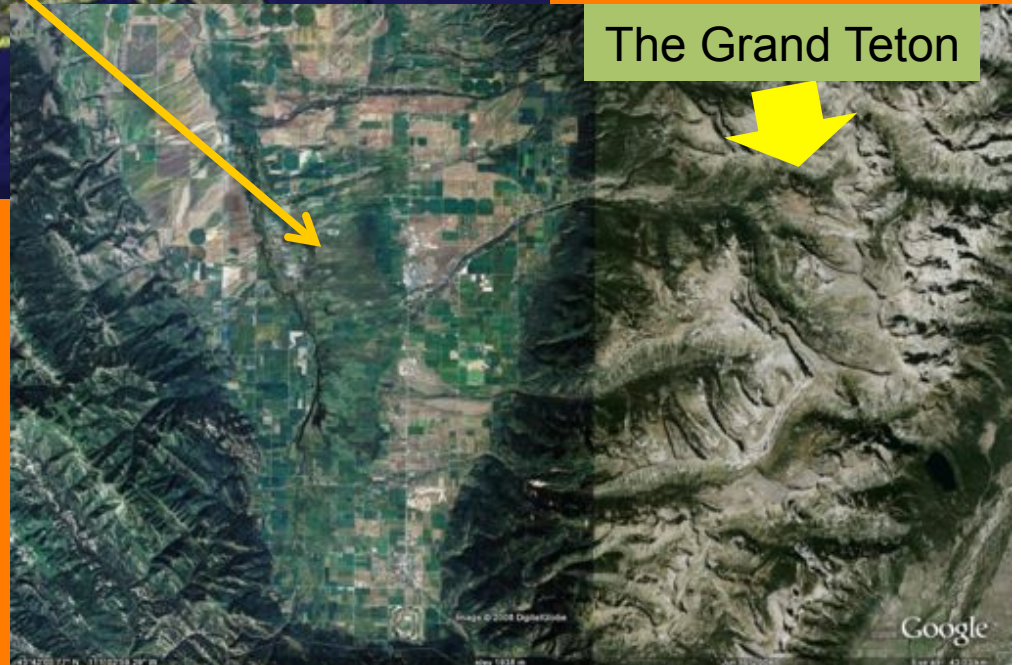
TRAILS AND PATHWAYS

Teton Valley Idaho



450 Square Miles
11 miles wide X
22 miles long

The Grand Teton



Basic Facts

Population: 8,349 (July 2007)

Three Towns

| | |
|---------|------------|
| Driggs, | Pop: 1,559 |
|---------|------------|

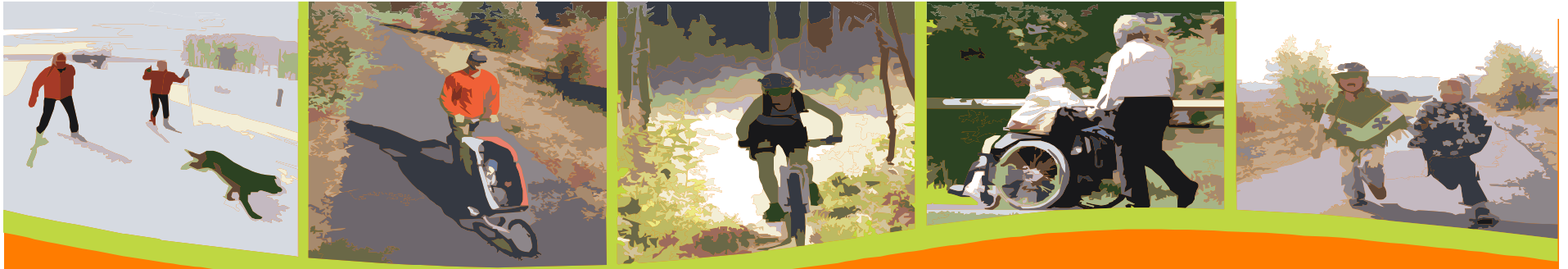
| | |
|----------|----------|
| Tetonia, | Pop: 235 |
|----------|----------|

| | |
|---------|------------|
| Victor, | Pop: 1,291 |
|---------|------------|

Daily Commuter Distances
an average of 60 miles

Our History

- *1997 Dinner conversation about Bike Lanes*
- *1998 Rails to Trails completed deeded to Teton County Idaho*
- *1999 Granted Non-profit status*
- *2000 Partner with US Forest Service for first Trail work days*
- *2002 Start Grooming Nordic Trails*



Mission Statement

**Teton Valley Trails and Pathways
promotes a trails and pathways
connected community**

Four areas of focus

- Restore, maintain, and Build **non-motorized trails** in the National Forest Lands
- **Community Nordic Trails** systems
- **Pathway** Connections
- **Advocacy and Education** for development of multi use non-motorized pathways

Working with the Forest Service



Nordic Trails

- Saw a need in the community
- Serves to support the other endeavors of our mission
- Allows for Fund Raising Opportunities
- Groom Three Areas
 - Alta (private residences)
 - Teton Springs (private development)
 - Teton Canyon (National Forest Service Land)

Teton Springs Ski Trails



TRAIL DESCRIPTIONS

Alta Ski Trails

The groomed trails in Alta are just behind the school and St. Francis of the Teton Episcopal Church. The trails are all on private property. This is a moderately hilly course which gets significant amount of snowfall throughout the season. Dogs are allowed on these trails.

Teton Canyon Ski Trail

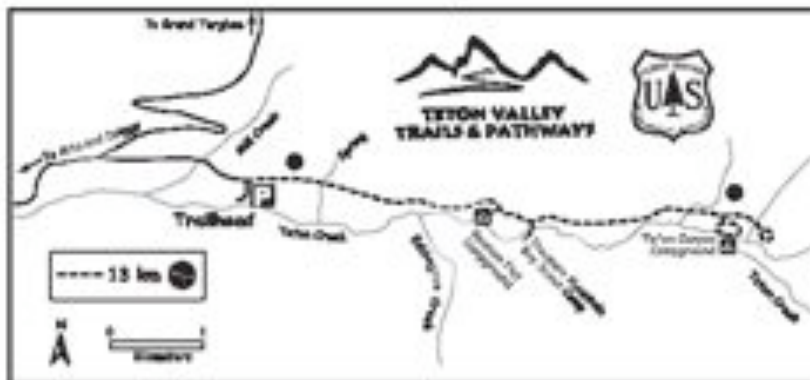
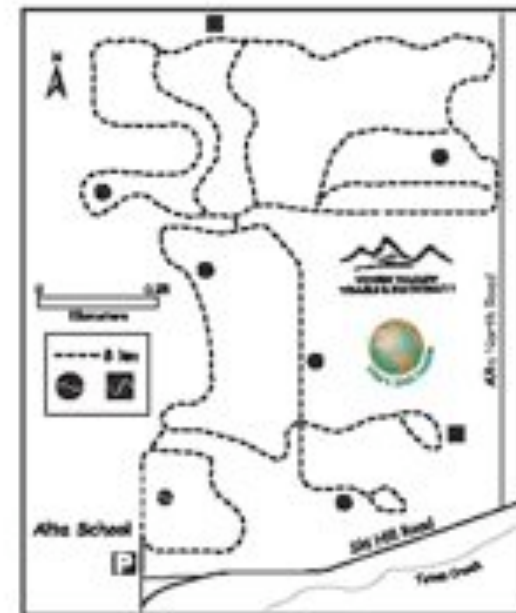
The Teton Canyon trail is on U.S. Forest Service land. Although the Canyon trail is the first to be groomed in November, and last to be groomed in the spring, the date of winter closure is the decision of the District Ranger's office. The Canyon is our most scenic trail, taking a gentle path up the valley directly towards the Grand Teton. This is a heavily used trail on the weekends, and gets a lot of dog traffic, walkers, etc.

Teton Springs Ski Trails

Teton Springs is a private club located at the far south of the valley, south-west of Victor. Their beautifully landscaped championship golf course creates an equally beautifully groomed Nordic trail system. The trails take skiers over bridges, along water creeks, through trees, and rolling hills. Dogs are not allowed on Teton Springs Ski Trails.

Please visit our website for ski reports and more information:
www.trtap.org

Alta Ski Trails



Teton Canyon Ski Trail



Pathways

Government Presence

→ Public Support & Interaction

→ Ordinance Adoption

→ Developer Resource

→ Private Business

Government Presence

- Project-Based Interactions
- Advocating for Ordinances and Regulations
- Education
- Get Involved on **Committees**



Public Support and Interaction

- Community Outreach
- Education
- Call to Action
- Get Involved on **Committees**



Ordinance and Regulation Adoption

- Become the **Authority**, become part of the process
- 1st Planning and Zoning then move up the chain
- Give them the **Resources**
- Get Involved on **Committees**

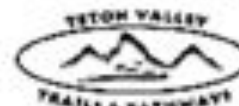


LEGEND

- | | |
|------------------------------------|--|
| MULT-USE PATHWAY (EXISTING) | PEDESTRIAN CROSSING |
| MULT-USE PATHWAY (POSSIBLE FUTURE) | AREA OF INTEREST (TRAIL, CREEK CORRIDOR) |
| BIKE LANE (EXISTING) | CITY OF VICTOR IMPACT AREA BOUNDARY |
| BIKE LANE (POSSIBLE FUTURE) | CITY OF VICTOR CITY LIMITS |



CITY OF VICTOR PATHWAYS PLAN



DEFINITION OF TERMS

MULTI-USE PATHWAY

DESCRIPTION: MINIMUM 10 FOOT WIDE ASPHALT PATHWAY, WITH PHYSICAL BARRIERS (BORDERS, TREES, BURNED BOUNDRIES, GRASS STRIPS) BETWEEN THE PATHWAY AND ADJACENT ROAD. LOCATED WITHIN CITY STREET RIGHT-OF-WAY USUALLY, BUT ALSO CONNECTING TO PREVIOUSLY DEVELOPED PATHWAYS IN SUBURBANOES.

SEPARATION FROM TRAFFIC: PHYSICAL BARRIERS CAN BE GRASS STRIPS, LANDSCAPE BORDERS, BOUNDRIES, TREES, BURNED, CURB AND GUTTER, A DRAINAGE DITCH OR AT LEAST A GRAVEL STRIP WHICH CREATES BARRIERS NEEDED.

RECOMMENDED MAINTENANCE: REGULAR SWEEPING AND TYPICAL ASPHALT REPAIRING SCHEDULE OF EVERY 3 TO 5 YEARS.

BIKE LANE/SHOULDER

DESCRIPTION: MINIMUM 4 FEET WIDE ASPHALT ON ONE SIDE OF THE PUBLIC RIGHT-OF-WAY, CONTINUOUS WITH THE ROAD SURFACE. 5 FEET WIDE IF CURB AND GUTTER ARE INCLUDED. DRAIN GRATES MUST BE PERPENDICULAR TO DIRECTION OF TRAVEL.

SEPARATION FROM TRAFFIC: NONE. BIKE LANE STRIPING 5 INCH STRIPE AND BIKE SYMBOL PAINTED IN BIKE LANE AND SIGNAGE HELP IDENTIFY THE BIKE ROUTE, LOCATED WITHIN THE CITY RIGHT-OF-WAY.

RECOMMENDED MAINTENANCE: REGULAR SWEEPING AND TYPICAL ASPHALT REPAIRING SCHEDULE.

BIKEWALK

DESCRIPTION: AN ASPHALT OR CONCRETE PAVED WALKWAY PRIMARILY DESIGNED FOR PEDESTRIANS AND USED BY YOUNGER BICYCLISTS. MINIMUM WIDTH IS 4 FEET; 5 FEET IS THE RECOMMENDED MINIMUM WIDTH FOR BUNKER STREETS, E.G. MAIN STREET OR CENTER STREET BY THE SCHOOL. BOUNDRIES CAN AND IN SOME CASES SHOULD BE LEGALLY CLOTTED TO EXCLUSIONS FOR SAFETY REASONS DUE TO HIGH LEVELS OF PEDESTRIAN USE.

SEPARATION FROM STREET: PREFERABLY NAMED ABOVE STREET GRADE 4 TO 6 INCHES AND PHYSICALLY SEPARATED BY CONCRETE CURB AND GUTTER, BUT NOT ALWAYS C/L. IF THE CITY PREFERENCES NO CURB AND GUTTER FOR DISPERSED DRAINAGE, LOCATED WITHIN THE CITY STREET RIGHT-OF-WAY.

RECOMMENDED MAINTENANCE: ASPHALT 3 TO 5 YEARS REPAIRING SCHEDULE, CONCRETE PATCH AND REPAIR AS NEEDED.

Developers Resource

- Pathways Handbook
- Engage them with common language
- Give them the resources



PATHWAYS



how they are important how they help sell homes how to build them

Private Businesses

- Education
- Everyone uses the same businesses in a small town
- Give them the resources

Thank You

Tim Adams, Executive Director
Teton Valley Trails And Pathways
60 East Ashley
P.O. Box 373
Driggs, ID 83422
(208) 201-1622
pathways@tetonvalley.net
www.tvtap.org



TETON VALLEY



TRAILS AND PATHWAYS