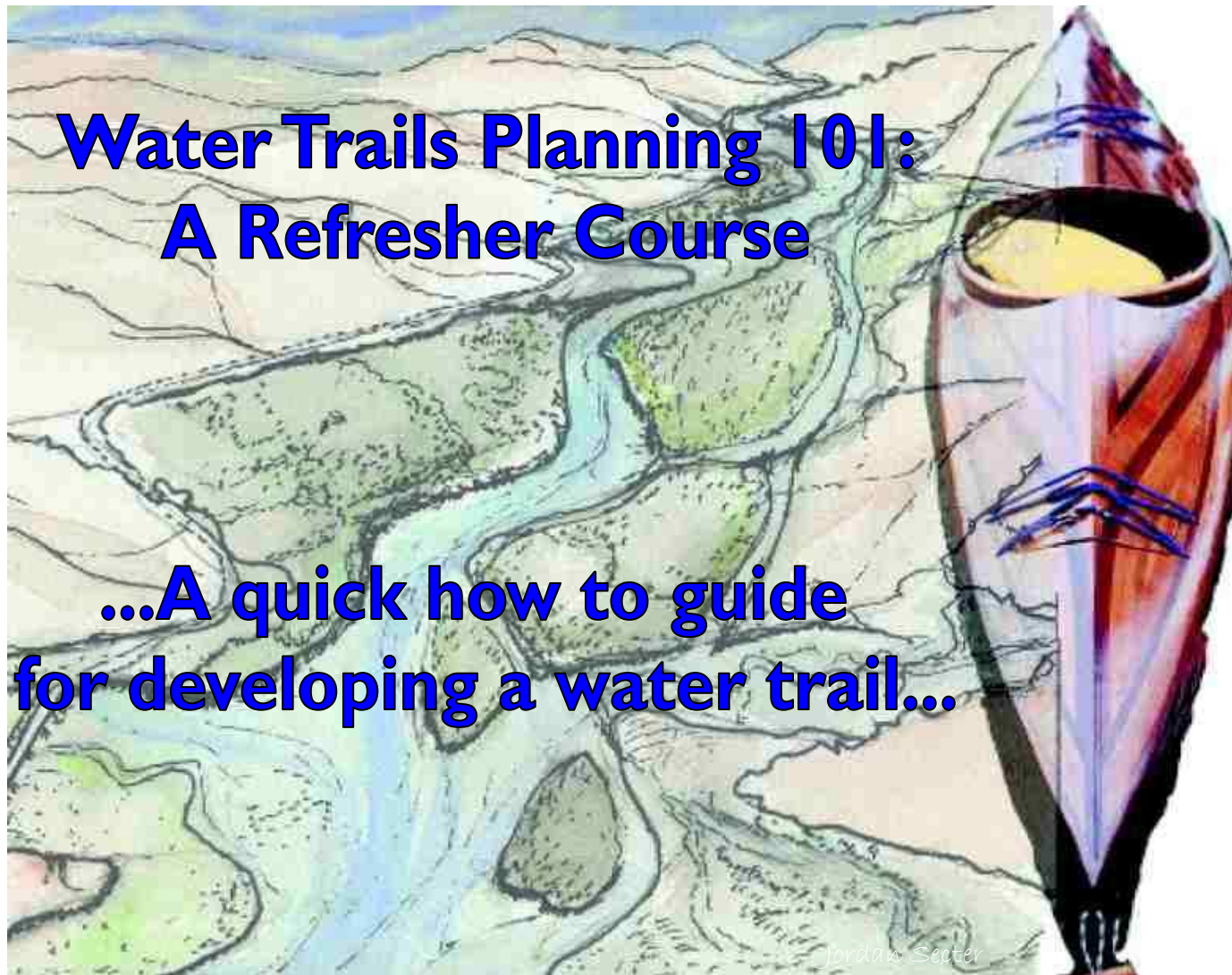




EXPERIENCE  
YOUR  
AMERICA

# Water Trails Planning 101: A Refresher Course

...A quick how to guide  
for developing a water trail...





## Steps For Planning & Development

1. Formation of a Planning Team
2. Inventory of Public Parcels & River Segments
3. Generate Issues/Public Outreach
4. Analyze Inventory
5. Make Recommendations
6. Issues Resolution
7. Plan Development
8. Guidebook/Map Development
9. Funding & Implementation



## Steps For Planning & Development

1. Formation of a Planning Team
2. Inventory of Public Parcels & River Segments
3. Generate Issues/Public Outreach
4. Analyze Inventory
5. Make Recommendations
6. Issues Resolution
7. Plan Development
8. Guidebook/Map Development
9. Funding & Implementation



EXPERIENCE  
YOUR  
AMERICA

## Formation of a Planning Team

- ✓ Ideal Planning Team Size of 5-8 People
- ✓ Stakeholder Advisory Committee
- ✓ Broad Array of Stakeholders
  - Paddlers
  - Landowners
  - Chamber of Commerce/Tourism
  - Economic Development/COGs
  - Watershed Councils
  - Public Land Managers
  - Land Trusts
  - Ports & Marine Board
  - Search & Rescue/Law Enforcement





## Steps For Planning & Development

1. Formation of a Planning Team
2. Inventory of Public Parcels & River Segments
3. Generate Issues/Public Outreach
4. Analyze Inventory
5. Make Recommendations
6. Issues Resolution
7. Plan Development
8. Guidebook/Map Development
9. Funding & Implementation





EXPERIENCE  
YOUR  
AMERICA

## Inventory of Public Parcels & Segments

- ✓ Develop an Inventory Sheet(s)
  - Test the sheet(s)
- ✓ Use volunteers
  - Hold a short training session or paddle
- ✓ Gather Electronic Data
  - Digital Photos, GPS data, etc.
- ✓ Have One Inventory Collector
  - Person should be easily accessible





## Steps For Planning & Development

1. Formation of a Planning Team
2. Inventory of Public Parcels & River Segments
3. Generate Issues/Public Outreach
4. Analyze Inventory
5. Make Recommendations
6. Issues Resolution
7. Plan Development
8. Guidebook/Map Development
9. Funding & Implementation



## Generate Issues/Public Outreach

EXPERIENCE  
YOUR  
AMERICA

- ✓ Host Stakeholder Mtgs & Open House(s)
  - Solicit concerns, opportunities, etc.
- ✓ Brainstorm Issues & Roadblocks
  - Based on open house, advisory committee & planning team knowledge, generate issues







## Steps For Planning & Development

1. Formation of a Planning Team
2. Inventory of Public Parcels & River Segments
3. Generate Issues/Public Outreach
4. Analyze Inventory
5. Make Recommendations
6. Issues Resolution
7. Plan Development
8. Guidebook/Map Development
9. Funding & Implementation



EXPERIENCE  
YOUR  
AMERICA

## Analyze Inventory

- ✓ Generate Inventory Map & Site Descriptions
  - Public lands, Major roads, Access sites, Location of amenities, hazards, etc.
- ✓ Locate Gaps In Amenities & Access
  - Determine float times between amenities

### Mapleton Dock



#### DESCRIPTION

Mapleton Dock is located immediately behind the business district in Mapleton and one block off of Hwy 126. Just downstream of the Hwy 126 bridge, it is well situated as a put-in for the Siuslaw Water Trail. Its facilities are well maintained and minor improvements would make the dock ideal for launching. Launching from the bank is also possible.

#### LOCATION

(R)ight bank/(L)eft bank .....R  
River mile .....18.3  
GPS @ shore (UTM/NAD83)

#### ACCESS

Boat In ..... Yes  
Drive In ..... Yes  
Walk In ..... Yes  
Fees ..... No  
Vehicle parking ..... Yes  
Hazards: .....  
Comments: .....

#### PUT IN/TAKE OUT

Shore Launch .....Sandy  
Boat ramp .....No  
Dock ..... Yes  
Comments: .....



#### AMENITIES

Restrooms ..... Pit Vault  
Potable Water .....No  
Picnic Tables ..... Yes  
Trash receptacle ..... Yes  
Fire Rings .....No  
Hiking Trails .....No  
Shelter ..... Yes  
Pay Phone .....No  
Electricity .....No  
Showers .....No  
Other: .....  
Comments: Additional services at nearby stores

#### CAMPING

Car .....No  
RV .....No  
Boat In .....No  
Hike/bike In .....No  
Designated sites # .....N/A  
Dispersed sites # .....N/A  
Camping fees .....N/A

#### CONTACT

Port of Siuslaw  
(541) 997-3426

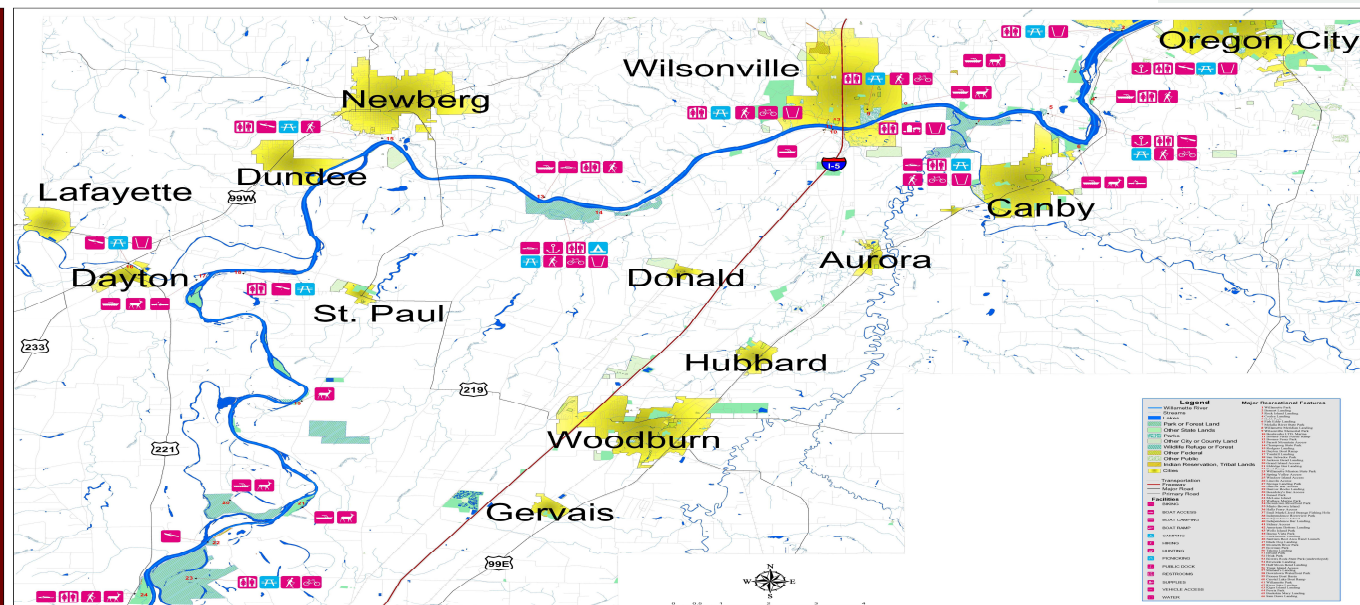


## Analyze Inventory

EXPERIENCE  
YOUR  
AMERICA

- ✓ Generate Inventory Map & Site Descriptions
  - Public lands, Major roads, Access sites, Location of amenities, hazards, etc.
- ✓ Locate Gaps In Amenities & Access
  - Determine float times between amenities

Mid-Willamette River Connections - Map A





## Steps For Planning & Development

1. Formation of a Planning Team
2. Inventory of Public Parcels & River Segments
3. Generate Issues/Public Outreach
4. Analyze Inventory
5. Make Recommendations
6. Issues Resolution
7. Plan Development
8. Guidebook/Map Development
9. Funding & Implementation



EXPERIENCE  
YOUR  
AMERICA

## Recommendations & Issue Resolution

- ✓ Recommendations to Fill Gaps & Needs
  - Based on River Inventory
  - Additional amenities to existing sites &/or new sites
- ✓ Discuss Issues
  - Hold planning meetings to collectively discuss and resolve problems







## Steps For Planning & Development

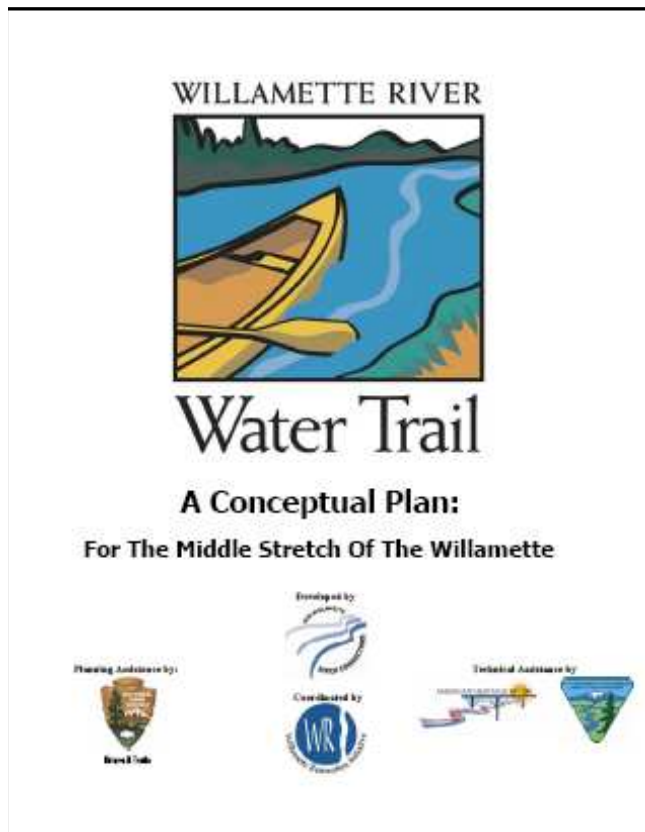
1. Formation of a Planning Team
2. Inventory of Public Parcels & River Segments
3. Generate Issues/Public Outreach
4. Analyze Inventory
5. Make Recommendations
6. Issues Resolution
7. Plan Development
8. Guidebook/Map Development
9. Funding & Implementation



EXPERIENCE  
YOUR  
AMERICA

## Plan Development

- ✓ Doesn't Need to Weigh 35lbs
  - Concise, Clear & Easy to Understand
- ✓ Colorful/Graphic in Nature
  - Pictures, Drawings & Maps
- ✓ Living, Breathing Document
  - Revisit/Revise Plan Often





## Steps For Planning & Development

1. Formation of a Planning Team
2. Inventory of Public Parcels & River Segments
3. Generate Issues/Public Outreach
4. Analyze Inventory
5. Make Recommendations
6. Issues Resolution
7. Plan Development
8. Guidebook/Map Development
9. Funding & Implementation



EXPERIENCE  
YOUR  
AMERICA

## Guidebook/Map Development

- ✓ Base Decision On Scale
  - Smaller = Map
  - Larger = Guidebook
- ✓ Start Earlier Than You Think
  - Discuss with a printer and/or Designer
- ✓ Print Smaller Runs If Improvements Are Coming
- ✓ Consider Charging For Map/Guidebook
  - Use Funds to Cover Reprints, Maintenance &/or Seed \$
  - And/or make available on the web

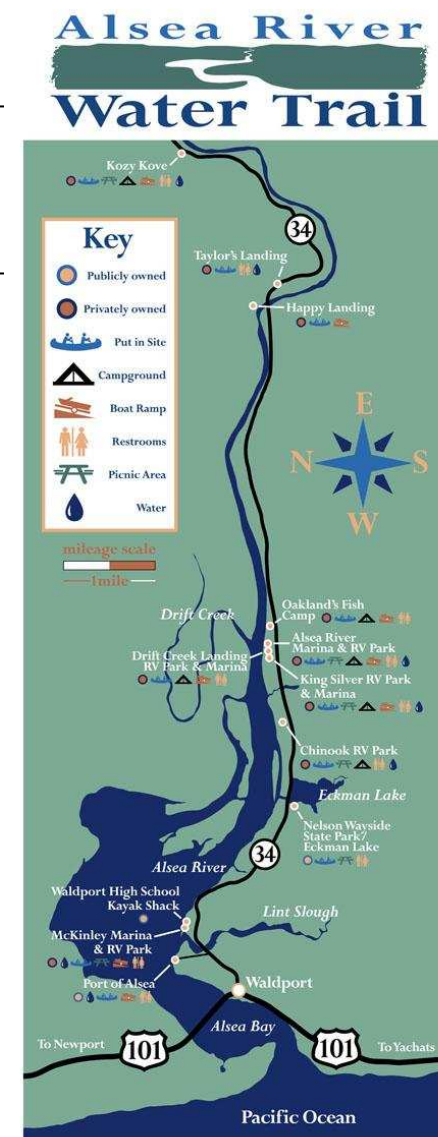




## Guidebook/Map Development

### Potential Contents of Guide/Map:

- Contact info
- Maps w/ access pts, public lands & amenities
- Suggested paddles
- Safety
- Stewardship
- Natural resources of note (wildlife, geology, etc)



EXPERIENCE  
YOUR  
AMERICA





## Steps For Planning & Development

1. Formation of a Planning Team
2. Inventory of Public Parcels & River Segments
3. Generate Issues/Public Outreach
4. Analyze Inventory
5. Make Recommendations
6. Issues Resolution
7. Plan Development
8. Guidebook/Map Development
9. Funding & Implementation



EXPERIENCE  
YOUR  
AMERICA

## Funding

### ✓ Funding Sources

- Recreation Trails Program (RTP)
- Marine Board
- Land & Water Conservation Fund (LWCF)
- Economic & Tourism Development
- Community Foundations
- Health & Wellness
- Rivers, Trails & Conservation Assistance (Planning Assistance)

### ✓ Company Support

- Like Supporting Guides, Maps, Websites & Signage





EXPERIENCE  
YOUR  
AMERICA

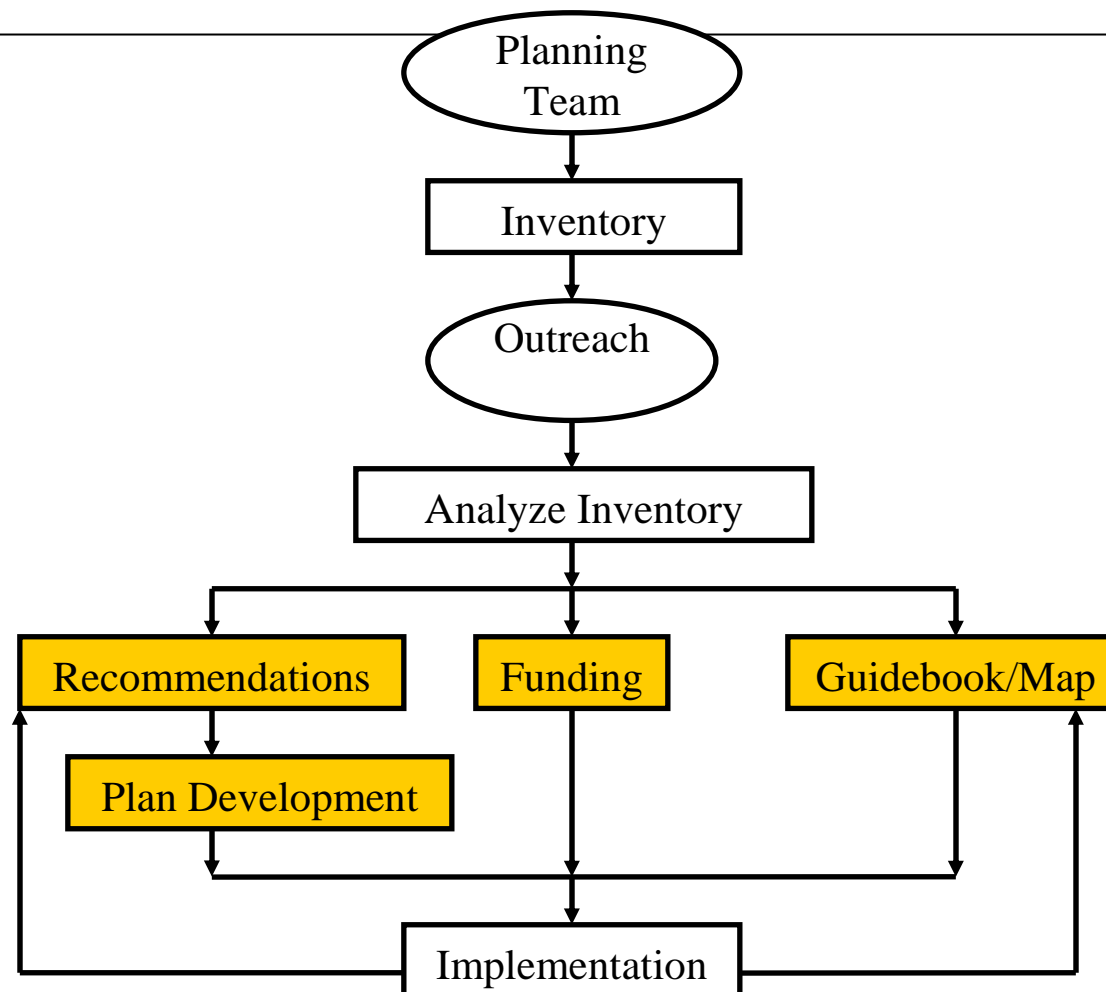
## Implementation

- ✓ Takes Time/Never Done
  - Can Take Well Over 10+ Years to Implement
- ✓ Develop In Stages (if appropriate)
  - Start Slowly & Get People Accustomed
- ✓ Go With Opportunities
  - Don't Handcuff Project With Too Much Prioritization
- ✓ Select a Point of Contact/Coordinator
  - Important for Landowners, Paddlers & Agencies to have One POC





# Steps For Planning & Development





EXPERIENCE  
YOUR  
AMERICA

## **Some 'Model' Water Trails in PNW**

- **Willamette River Water Trail**
  - [www.willamettewatertrail.org](http://www.willamettewatertrail.org)
- **Lower Columbia Water Trail**
  - [www.columbiawatertrail.org](http://www.columbiawatertrail.org)
- **Northwest Discovery Water Trail**
  - [www.nwdt.org](http://www.nwdt.org)
- **Lakes to Locks**
  - [www.wwta.org/trails/l2l](http://www.wwta.org/trails/l2l)
- **Cascadia Marine Trail**
  - [www.wwta.org/trails/cmt](http://www.wwta.org/trails/cmt)
- **Deschutes River Water Trail**
  - [www.bendpaddletrailalliance.org](http://www.bendpaddletrailalliance.org)





# **Rivers, Trails and Conservation Assistance Program (RTCA)**

---

**National Park Service**



**Technical Assistance for  
Conservation & Outdoor Recreation Projects**

**Applications Accepted Until August 1st**