



Standish Intergenerational Care Community

The Nest Forestry Nursery

bw
BARNES
WALKER

delve

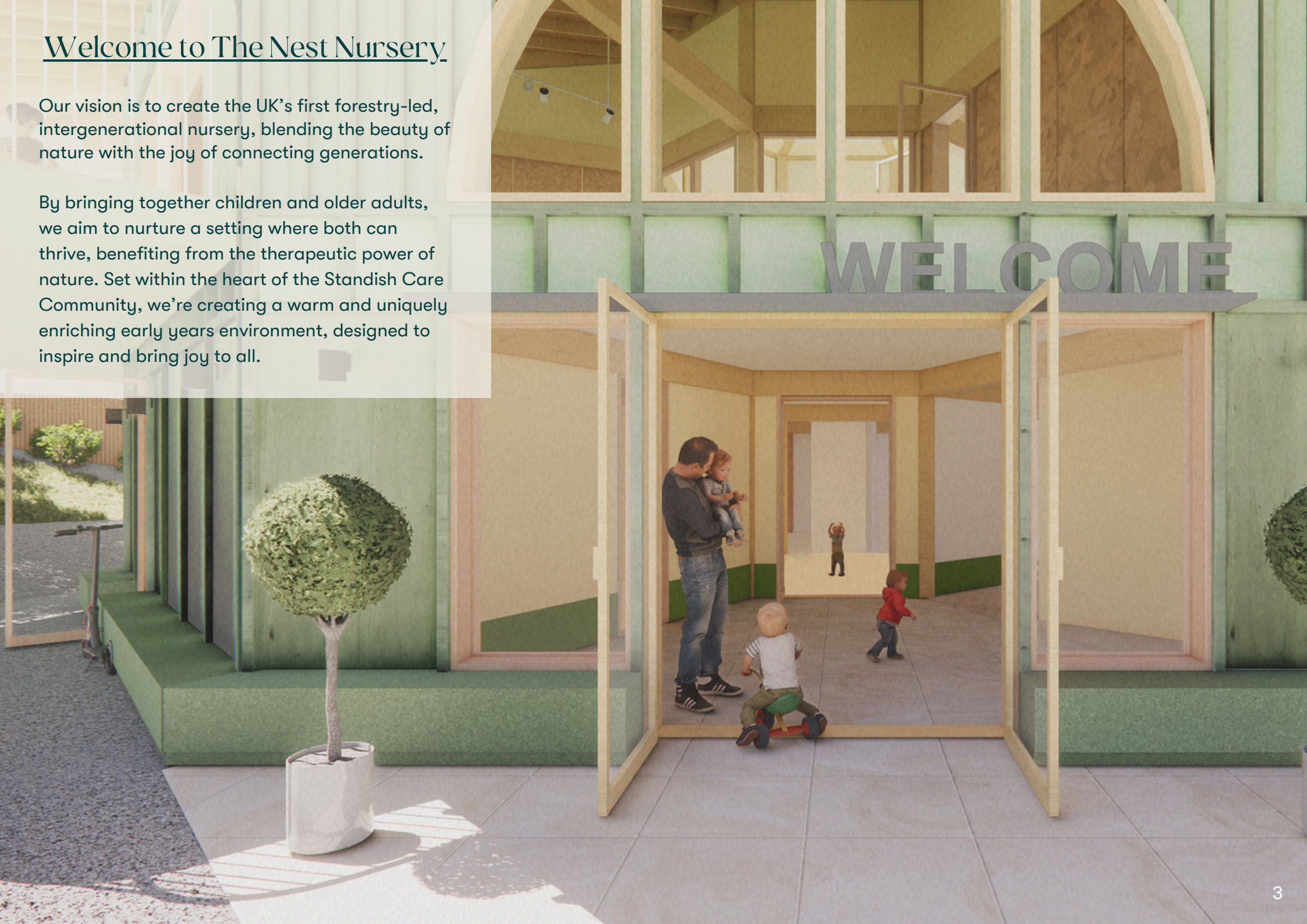
Contents

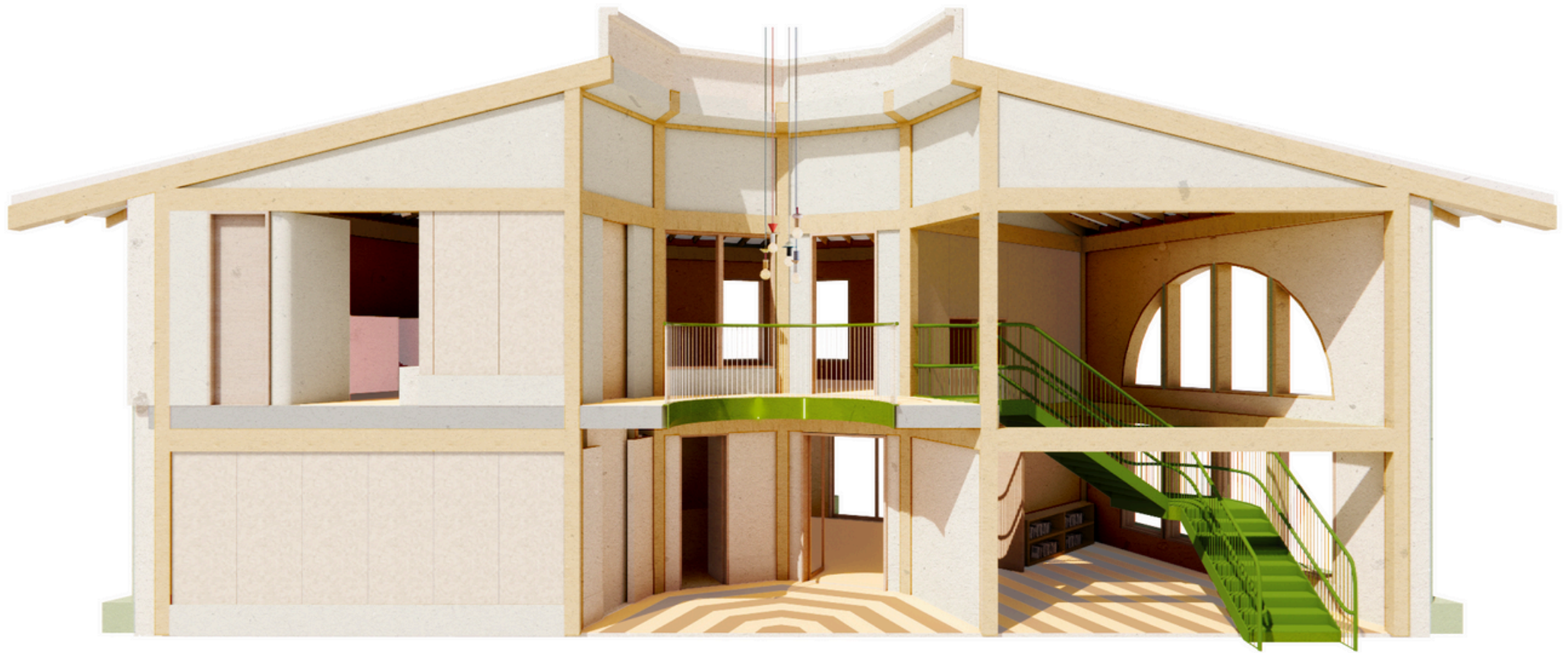
Welcome to The Nest Nursery	3
Designing with nature for nurture	4
View from the Baby Room	5
Learning through nature	6
Learning through nature (cont.)	7
Site map	8
Ground Floor Plan	9
First Floor Plan	10

Welcome to The Nest Nursery

Our vision is to create the UK's first forestry-led, intergenerational nursery, blending the beauty of nature with the joy of connecting generations.

By bringing together children and older adults, we aim to nurture a setting where both can thrive, benefiting from the therapeutic power of nature. Set within the heart of the Standish Care Community, we're creating a warm and uniquely enriching early years environment, designed to inspire and bring joy to all.

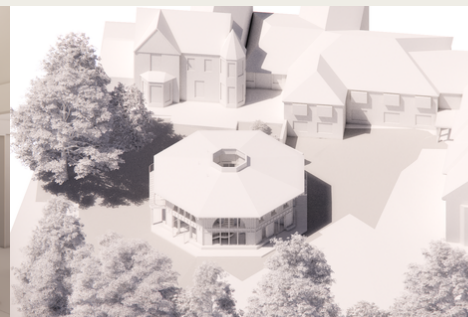




Designing with nature for nurture

Timber surrounds the site in the form of over 100 beautiful mature trees that are home to a rich and varied selection of aviary wildlife. The design of the building draws inspiration from this.

Featuring an open-plan, green-frame oak timber structure, The Nest Nursery is thoughtfully designed to promote seamless access to and views of the surrounding nature. This ensures that the connection to the stunning green spaces around us remains as strong indoors as it is outside, fostering a harmonious and calming atmosphere for all.



View from the
Baby Room



Learning through nature

Our landscape has been carefully and sensitively designed to provide a secure outdoor space nestled in connecting all the senses with nature through all seasons.





Learning through nature

The indoors connects seamlessly to the outdoors with opening walls to garden spaces. The nursery takes inspiration from Fuji Kindergarten in Japan where the volume of toys indoors is kept to a minimum to promote and gently encourage play outside.

Featuring lush box hedges for natural screening and an abundance of vibrant, soft planting, the beautifully designed landscape draws inspiration from the picturesque English countryside.

From allotments where both young and old can grow their own ingredients and share in meaningful mealtime experiences, to an elevated deck for performing arts, every aspect of the garden has been thoughtfully and meticulously designed. The same level of care and attention given to the architecture of the building is mirrored in the creation of this beautiful, multi-functional outdoor space.



- 1 The Nest Forestry Nursery
- 2 Worthington Lake Care Home
- 3 Lakeside Care Home
- 4 Langtree Care Home
- 5 The Deck - Outdoor Play Area

- 6 The Allotment Garden Kitchen
- 7 Open Play Space
- 8 The Den, Play Space & Nature Exploration Area
- 9 Bird Boxes

- 10 Friendship Benches
- 11 Private Access to Lake
- 12 Chicken Coup
- 13 Summer House
- 14 Intergenerational Gym

- 15 Vegetable & Plant Growing Shed
- 16 Intergenerational Play Space
- 17 Woodland Walking Trail
- 18 Intergeneration Sensory Garden
- 19 Bird Watching Deck



Part of the Standish Intergenerational Care Community, the Nest Nursery will be nestled between three care homes in an area of outstanding natural beauty.

With private access to Worthington Lakes and Arley Woods, it will be the hub of the care village; a connective community thread using innovative approaches to bridge generations in a way that is a first for the borough.

Ground Floor Plan

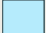

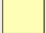

A generous entrance lobby is overlooked by a staff office before entering either into the atrium in the centre of the plan or ascending up to the first floor via the double height void that houses the sculptural staircase wrapping around the Lift.

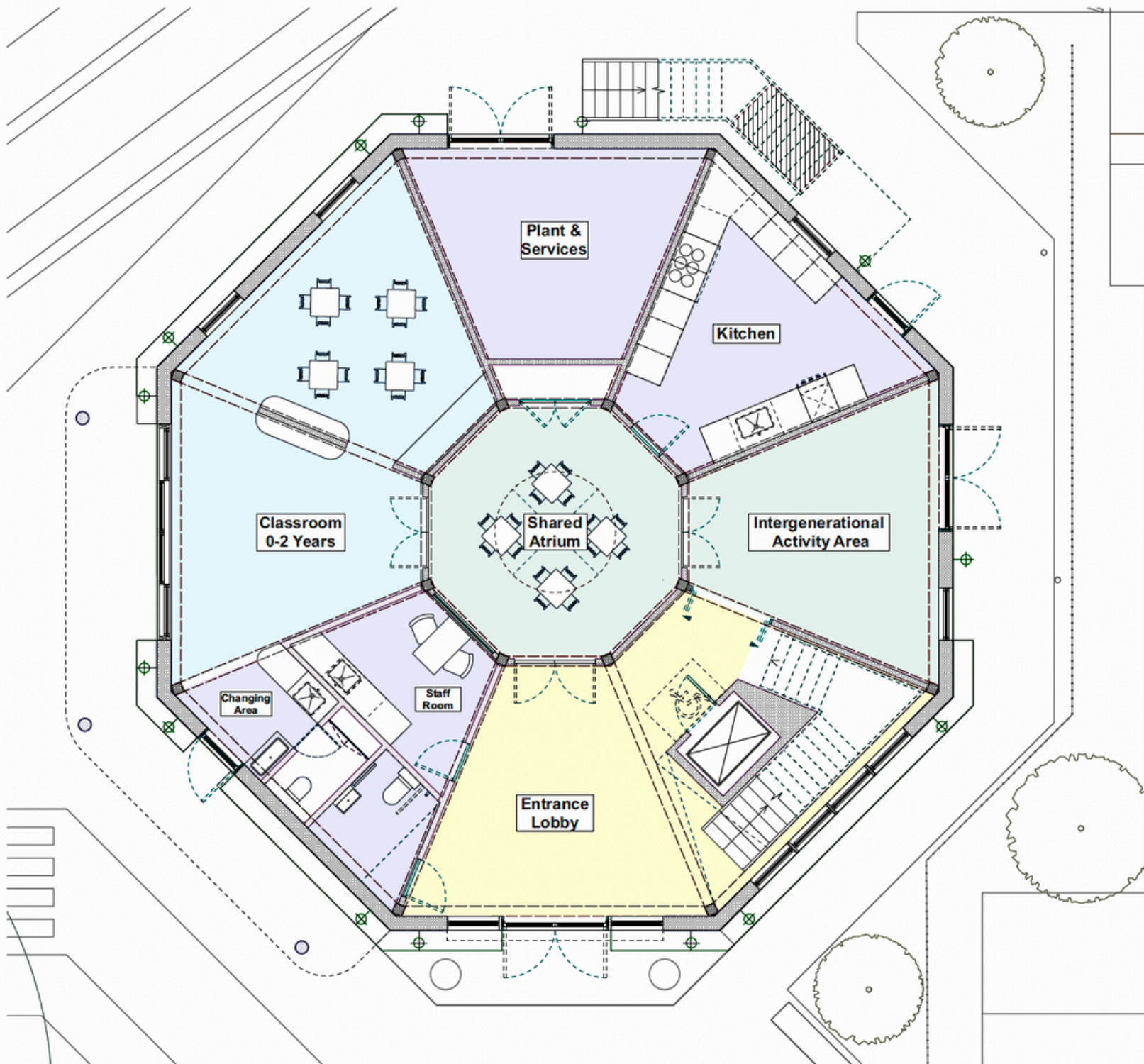
Light floods the atrium in the heart of the plan via a triple height rooflight, to the right, the shared space, to the left, the babies room.

This babies space has direct access to the gardens whereby a wall of bi-fold doors can be slid back to benefit from indoor/outdoor space, building on a greater connection to the outside and nature.

The intergenerational nature of the building allows for many of the spaces to open out and spill between one another whilst being safe and secure for out of hours use.

The ground floor also houses Back of House functions (BoH) including the plant area and kitchen space that both benefit from being externally accessed as not to disrupt the daily functions of the nursery.

-  Babies
-  Shared Space
-  Circulation
-  Back of House



First Floor Plan

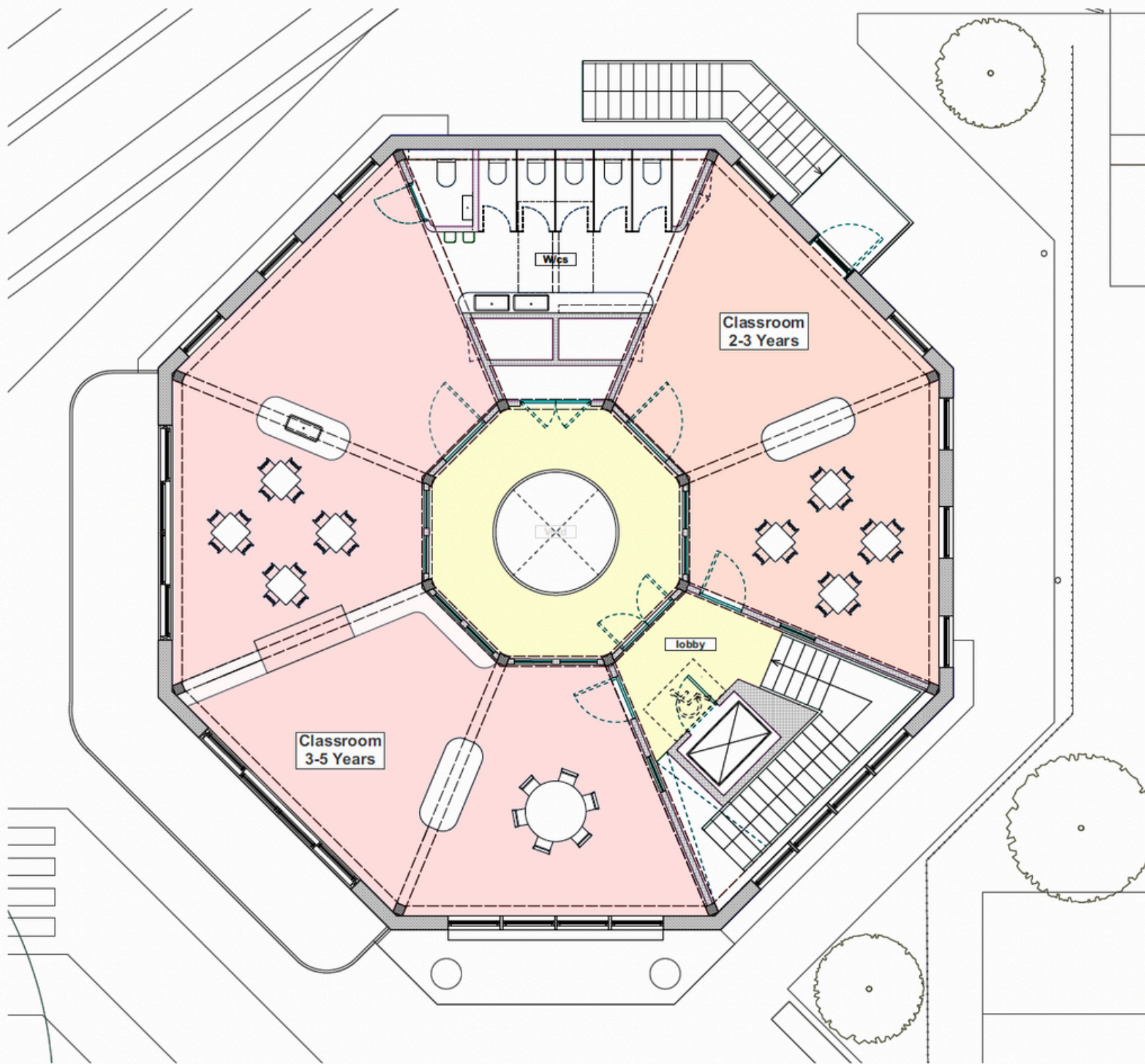
Upon reaching the first floor, one is given the option to enter either of the Pre-schoolers rooms to the left or the toddlers room to the right, both of which can be seamlessly accessed through the W/Cs to the rear.

The airy, open plan Pre-schooler rooms have direct access to a South West facing balcony that offers solar shading to the babies room below and dedicated secure external play space to the first floor.

A secondary route via the Toddlers room offers direct access to the garden below.

The open-ness of the green oak frame offers high ceilings and exciting spaces for the older children to play. Both classroom spaces have direct access to the atrium also.

- Toddlers
- Pre-schoolers
- Circulation







Millennium Care, Standish Care Village
Chorley Road, Standish
WN1 2XN
info@millennium-care.co.uk

www.millennium-care.co.uk/the-nest