

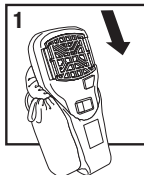
THERMACELL® MOSQUITO REPELLENT

MR300F

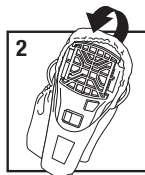
Includes Holster
with Clip

Active Ingredient:
d-cis/trans allethrin . . . 21.97%
Other Ingredients 78.03%
Total 100.00%
Contains petroleum distillates

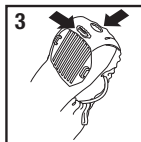
KEEP OUT OF REACH OF CHILDREN
CAUTION: See box for additional
First Aid and Precautions



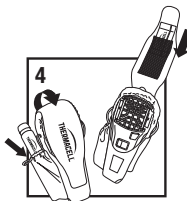
**Slide Repeller to
bottom of Holster
sleeve.**



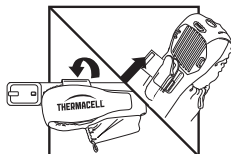
**Pull Holster hood
over top of
Repeller.**



**Align Repeller
ignition viewing
window with the
hole in the hood.**



**Insert spare
cartridges and mats
into pouches.**



Clip included for MR300F

DIRECTIONS FOR USE

USEFUL TIPS:

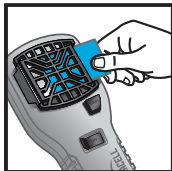
- Allow 10 to 30 minutes, depending upon the size of the area, for product to take effect.
- This product works best in outdoor areas where there is minimal air movement, such as yards and outdoor campsites.
- Provides a maximum of 4 hours mosquito repellency per mat.
- Original, Earth Scent and Max Life Thermacell refill mats are effective in Thermacell mosquito repellent devices.
- Mats turn from pale blue to white when mosquito repellent has been used up and needs to be replaced.
- Some visible vapor will appear during use; this is normal.
- Use additional mosquito repellents to cover a larger area.
- Altitudes above 7000 ft can effect product performance.

Use Restrictions:

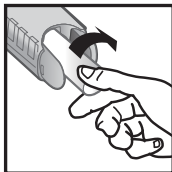
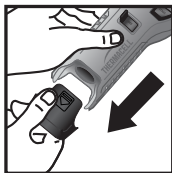
Only for outdoor use as a mosquito repellent. Do not use indoors, in tents or in any enclosed area. Do not insert anything other than Thermacell® mats into the mosquito repeller. Cover or remove all exposed food. Do not leave mosquito repeller unattended or use in windy conditions. Do not expose mosquito repeller or mats to rain. Place mosquito repeller on a flat, stable surface with the grill facing upward. Do not touch the grill; it will be hot after a couple of minutes. Clean with a damp cloth only when the mosquito repeller is cool and inactive. Only Thermacell® mats and cartridges will work in this mosquito repeller.

It is a violation of Federal law to use this product in a manner inconsistent with its labeling.

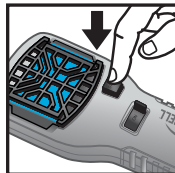
TO USE THE MOSQUITO REPELLENT



1. Remove one Thermacell® Mosquito Repellent mat from wrapper.
2. Make sure the 'ON/OFF' switch on the appliance is in the 'OFF' position. Insert the mat under the appliance's black grill. To change mats, slide the 'ON/OFF' switch to 'OFF' and allow the appliance to cool completely. Push the used mat out by inserting a fresh one.
3. Remove the appliance cap. Remove the cap from the cartridge.



4. Screw the cartridge into the opening of the appliance. Make sure the cartridge is fully inserted by turning it clockwise until it stops. Replace the appliance cover. If your appliance fails to heat, it may be out of fuel. To check the fuel level, hold the appliance vertically and look through the slot on the back of the appliance. You can see the amount of butane left in the cartridge. Replace if empty.



5. Slide the 'ON/OFF' switch to the 'ON' position; the butane gas will begin to flow.
6. Wait approximately 5 to 10 seconds then depress the start button three to five times in rapid succession.

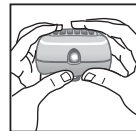


When finished using the appliance, slide the 'ON/OFF' switch to the 'OFF' position, and allow the appliance to cool completely. Appliance is now ready for storage.

TROUBLESHOOTING

If you do not see an orange glow through view window

1. Repeat directions "To Turn ON".
2. If there is still no orange light visible, make sure the fuel cartridge is completely screwed into place. Repeat "Turn On" directions. Confirm the orange glow is visible.
3. Check the amount of fuel in the cartridge. If cartridge is empty or near empty, remove cartridge and replace with a new cartridge. Repeat "Turn On" directions. Confirm the orange glow is visible.



Not sure product is working?

1. Place product upwind for maximum mosquito repellency. Windy conditions can reduce mosquito repellent effectiveness.
2. Check the mosquito repellent mat. Mats turn from pale blue to white when it has been used up. See directions to replace Thermacell Mosquito Repellent Mat.
3. Check the amount of fuel in the cartridge. If cartridge is empty or near empty, remove cartridge and replace with a new Thermacell cartridge. Repeat "Turn On" directions. Confirm the orange glow is visible.

Still have questions?

Call customer service at 1-866-753-3837 or email Service@Thermacell.com