

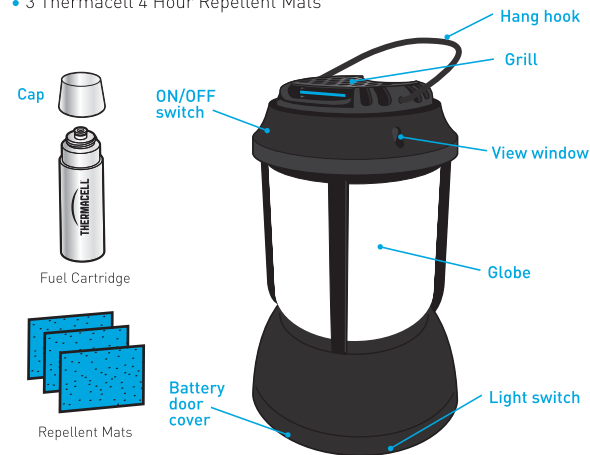
Welcome to Thermacell

Thermacell products create a zone of protection from mosquitoes, without the use of sprays or other topical products, candles or torches.



In the Box

- 1 Thermacell Patio Lantern
- 1 Thermacell 12 Hour Fuel Cartridge
- 3 Thermacell 4 Hour Repellent Mats

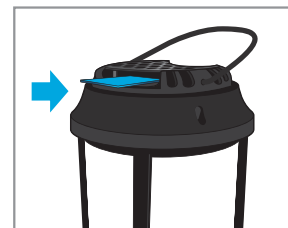


DIRECTIONS FOR USE

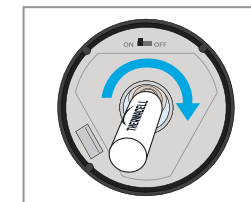
It is a violation of Federal law to use this product in a manner inconsistent with its labeling.

Let's get started

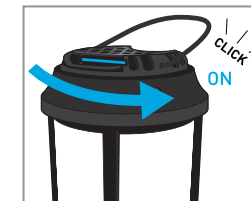
1. Unwrap a Thermacell mosquito repellent mat and slide under the repeller grill.
- Repeller must be off when inserting or changing mats.
- Always center mats under the grill, to fully cover the metal plate.
- Mats change from blue to white when they need to be replaced.
- To replace a mat, push the old mat out using a new mat.
- Keep new mats in wrapper until ready to use.



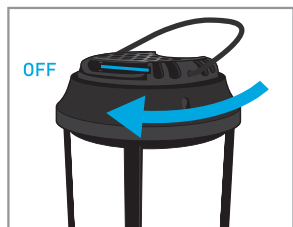
2. Remove the plastic cap from a fuel cartridge and screw into fuel cartridge port.
- Screw the fuel cartridge into the port until hand-tight.
- Fuel cartridges provide up to 12 hours of operation each.



3. Start the repeller by twisting to the ON position. Wait 5 seconds and then turning to the START position until you hear a click.
- Check the view window for an orange glow. A small flame should be visible through the view window when product is properly started.
- Twist to START again if you do not see an orange glow.
- See Useful Tips if the device is difficult to light.

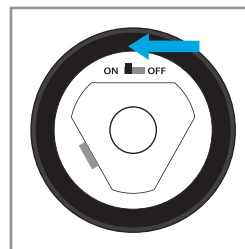


4. Allow up to 15 minutes for the full zone to be established.
5. When finished using the repeller, twist the base mode selector to the OFF position.



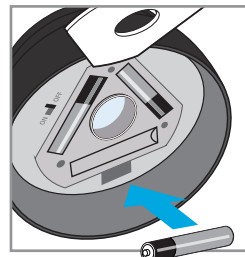
Light

- To turn the light on/off slide the switch to the on/off position
- The repeller can be used without the light functionality if desired.



Installing Batteries

- Remove the battery cover from lantern. Insert 3 AAA batteries as indicated.
- Reinstall battery cover.



Useful Tips

1. For best results, place in the center of the area you want protected from mosquitoes.
2. Start the device and put in place 15 minutes before using the area.
3. Allow 15 minutes for the full zone to be established.
4. For optimal protection in larger areas, use multiple repellents spaced up to 15 feet apart.
5. Effectiveness can be impacted by wind and air movement. Place upwind on a windy day.
6. Do not expose open mats or device to rain.

Maintenance, Storage and Care

- Condensation can build up on and around the grill over time. Clean with a damp cloth if needed. Do not use chemicals or abrasives.
- Partially used mats should be disposed of and batteries should be removed prior to storing for extended periods of time. See Storage and Disposal Instructions.
- Fuel cartridges are not permitted on a plane, either as checked or carry on luggage. Please remove from repeller prior to air travel.

Troubleshooting

- Wind and other conditions may cause the flame to go out. Restart the repeller if flame is not visible through the view window.
- Altitude above 7,000 ft may prevent repeller from functioning properly.
- If the repeller won't turn on or stay on:
 1. Confirm that the fuel cartridge is not empty.
 2. Ensure the fuel cartridge is fully threaded into the fuel port.
 3. Listen for fuel flow to ensure fuel is properly running.
 4. Turn the repeller to the START position, confirming you hear a click.
 5. Repeat start instructions.
- If you are still bothered by mosquitoes after 15 minutes, check that:
 1. The device is lit by looking for a small orange or blue glow inside the view window.
 2. Check that fuel remains in the cartridge.
 3. Ensure that you are using a fresh mat.
 4. Call or email customer service if you are still experiencing issues.

Questions?
We're here
to help, 24/7

1-866-753-3837

service@thermacell.com

DIRECTIONS FOR USE

It is a violation of Federal law to use this product in a manner inconsistent with its labeling.

Storage and Disposal

Do not contaminate water, food or feed by storage or disposal. **Pesticide Storage:** Store unused mats in original box in a cool, dry place inaccessible to children and pets. Store device and fuel cartridges in original box in a cool, dry place away from sources of heat. **Pesticide Disposal and Container Handling:** Non-refillable container: do not refill or reuse this container. **If cartridge is empty or for used mats:** Do not reuse empty packaging, wrappers or cartridges. Do not puncture or incinerate empty cartridges. Place in trash or offer for recycling if available. **If cartridge is partly filled or for unused mats:** Call your local solid waste agency for disposal instructions. Never place unused mats down any indoor or outdoor drain. **For unwanted device:** Place in trash or offer for recycling if available.

Use Restrictions: Only for outdoor use as a mosquito repellent. Do not use indoors, in tents or in any enclosed area. Cover or remove all exposed food. Do not leave device unattended. Always operate device on a flat, stable surface with the grill facing upward. Only use Thermacell® mats and cartridges in this device. Ensure vents and grill are not covered during use.

PRECAUTIONARY STATEMENTS

Hazards to Humans & Domestic Animals CAUTION: Contains petroleum distillate. Harmful if swallowed or absorbed through skin. Causes moderate eye irritation. Avoid contact with skin, eyes or clothing. Wash hands thoroughly with soap and water after handling and before eating, drinking, chewing gum, using tobacco or using the toilet. Remove and wash contaminated clothing before reuse.

First Aid

If Swallowed: Call a poison control center or doctor immediately for treatment advice. Do not induce vomiting unless told to do so by a poison control center or doctor. Do not give any liquid to the person. Do not give anything by mouth to an unconscious person. **If On Skin or Clothing:** Take off contaminated clothing. Rinse skin immediately with plenty of water for 15-20 minutes. Call a poison control center or doctor for treatment advice. **If In Eyes:** Hold eye open and rinse slowly and gently with water for 15-20 minutes. Remove contact lenses, if present, after the first 5 minutes, then continue rinsing eyes. Call a poison control center or doctor for treatment advice. **If Inhaled:** Inhaling the contents may be harmful or fatal. Intentional misuse by deliberately concentrating and inhaling the contents may be harmful or fatal. If vapors are inhaled, remove person to fresh air. Have the product container or label with you when calling a poison control center or doctor, or going for treatment. For additional information on this pesticide product (including health concerns, medical emergencies or pesticide incidents), you may call 1-866-753-3837, Monday through Friday, 8:30 AM to 4:30 PM EST. After 4:30 PM, call your poison control center. **Note to Physician:** Contains petroleum distillate. Vomiting may cause aspiration pneumonia.

Physical and Chemical Hazards

Fuel Cartridge Hazard: Extremely flammable. Contents under pressure. Vapors may cause flash fire. Use only in a well ventilated area. Do not use, store, or dispose near heat, sparks, flames or other ignition sources. Do not puncture or

incinerate. Containers exposed to direct sunlight or otherwise heated above 120°F (49°C) may burst, causing injury. Store in cool, dry, well-ventilated area.

Environmental Hazards

This product is toxic to fish and aquatic invertebrates. Do not apply directly to water. Do not contaminate water when cleaning equipment or disposing of equipment washwater or rinsate. Drift may be hazardous to aquatic organisms in water adjacent to treated areas.

Warranty, Limitation of Liability and Disclaimers:

Thermacell warrants that this product, when used in accordance with this label and all other instructions accompanying this product, complies with the product specifications set forth in this label. Except as otherwise provided by applicable law, Thermacell makes no other warranties, and disclaims all other warranties, express or implied, including but not limited to warranties of merchantability and fitness for a particular purpose. Except as otherwise provided by applicable law, Thermacell's liability for default, breach or failure of the product to perform in accordance with the product specifications set forth in this label shall be limited to the amount of the purchase price. Except as otherwise provided by applicable law, Thermacell shall have no liability for incidental or consequential damages.

TRI-PSLL2-IBX-04

MW0622

-02_0422



THERMACELL™
MOSQUITO
REPELLENT
LANTERN
USER GUIDE

Keep Out of Reach of Children
CAUTION
See outside packaging for additional First Aid and Precautions

Active Ingredient:
d-cis/trans allethrin 21.97%
Other Ingredients 78.03%
Total 100.00%
Contains petroleum distillate

EPA Reg. No. 71910-2

REGISTER TODAY
and extend your warranty coverage to **TWO YEARS.**

- 1 Take a photo of the camera icon.
- 2 Text photo to 71403 (US only).

Or register online at thermacell.photo
Need help? Visit photoregister.com/help or text HELP to 71403.