

THERMACELL®

MOSQUITO REPELLENT LANTERN



Active Ingredient:
d-cis/trans allethrin . . . 21.97%
Other Ingredients 78.03%
Total 100.00%
Contains petroleum distillates

KEEP OUT OF REACH OF CHILDREN

CAUTION: See bottom panel for additional First Aid and Precautions

DIRECTIONS FOR USE

USEFUL TIPS:

- Allow 10 to 30 minutes, depending upon the size of the area, for product to take effect.
- This product works best in outdoor areas where there is minimal air movement, such as patios, yards and outdoor campsites.
- All Thermacell refill mats work in Thermacell mosquito repellent appliances.
- Original mats provide up to 4 hours mosquito repellency per mat.
- Max Life mats provide up to 12 hours mosquito repellency per mat.
- Mats turn from pale blue to white when mosquito repellent has been exhausted and needs to be replaced.
- If your device fails to heat, it may be out of fuel. Check the fuel level by holding the cartridge vertically and looking at the fuel level. You can see the amount of butane in the cartridge. Replace if empty.
- Some visible vapor will appear during use; this is normal.
- Use additional appliances to cover a larger area.
- Altitudes above 4,000 ft may effect product performance.
- No repositioning of Max Life mat required. Mosquito repellent wicks to the center of the mat naturally.
- The mosquito repellent and light features operate independently.

Use Restrictions:

Only for outdoor use as a mosquito repellent. Do not use indoors, in tents or in any enclosed area. Do not insert anything other than Thermacell® mats into the mosquito repeller. Cover or remove all exposed food. Do not leave mosquito repeller unattended or use in windy conditions. Do not expose mosquito repeller or mats to rain. Place mosquito repeller on a flat, stable surface with the grill facing upward. Do not touch the grill; it will be hot after a couple of minutes. Clean with a damp cloth only when the mosquito repeller is cool and inactive. Only Thermacell® mats and cartridges will work in this mosquito repeller.

It is a violation of Federal law to use this product in a manner inconsistent with its labeling.

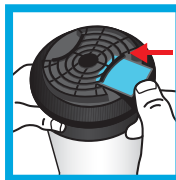
TO USE THE LIGHT:

The light may be used with the mosquito repellent or independently.



1. Open the battery compartment and insert batteries. Close the battery compartment.

2. To use the light, push the button on the base consecutively for Low, Medium, High, SOS and OFF. Lantern light can be turned off at any time by holding the button in for 3 seconds. The glowing power button also shows remaining battery life: blue = adequate power, yellow = power is getting low, red = change battery soon. Battery life does not affect mosquito repellent functions.

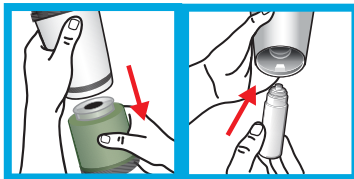


2. Rotate globe and remove from lantern base. Remove cap from the butane cartridge and screw cartridge into lantern.

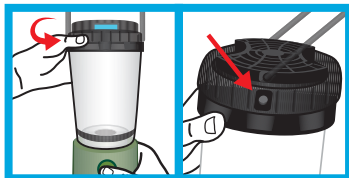
TO USE THE MOSQUITO REPELLENT:

1. Remove one Thermacell® Mosquito Repellent mat from wrapper. Insert the mat under the grill at the top of the lantern.

Turn cartridge clockwise until it stops. Make sure the cartridge is fully inserted. Replace globe.



3. To activate the mosquito repellent, raise the handle and rotate collar to the right until the indicator line points to "ON". The gas will begin to flow.



4. Wait approximately 5 to 10 seconds then rotate lantern collar further to the right until the indicator line points to "START". You should hear a clicking noise.
5. To verify that the mosquito repellent is activated look at the view hole located on the lantern collar to the right of the "START" button. An orange light will glow.

If there is no orange light, turn indicator line back to the "ON" position and repeat rotation to the "START" position two to three times in rapid succession.

6. If there is still no orange light visible in the view hole, make sure the cartridge is completely screwed into place. Also, check the amount of fuel in the cartridge. If cartridge is empty or near empty, remove cartridge and replace with a new Thermacell® cartridge. Then repeat steps 3-5.



7. When finished using the lantern, rotate the lantern collar to the left until the indicator line points to "OFF". Allow lantern to cool completely before storing. When lantern is in the "OFF" position, and handle is down, the handle locks collar in place preventing product from turning on.



8. To replace a used mat, make sure indicator line points to "OFF" and allow lantern grill to cool. Push the used mat out by inserting a fresh mat.

TROUBLESHOOTING

1. If you do not see an orange glow through view window.
 1. Repeat directions "To Turn ON".
 2. If there is still no orange light visible, make sure the fuel cartridge is completely screwed into place. Repeat "Turn On" directions. Confirm the orange glow is visible.
 3. Check the amount of fuel in the cartridge. If cartridge is empty or near empty, remove cartridge and replace with a new Thermacell® cartridge. Repeat "Turn On" directions. Confirm the orange glow is visible.
2. Not sure product is working?
 1. Place product upwind for maximum mosquito repellency. Windy conditions can reduce effectiveness.
 2. Check the mosquito repellent mat. Mats turn from pale blue to white when it has been depleted and needs to be replaced. See directions to replace Thermacell mosquito repellent mat.
 3. Check the amount of fuel in the cartridge. If cartridge is empty or near empty, remove cartridge and replace with a new Thermacell cartridge. Repeat "Turn On" directions. Confirm the orange glow is visible.
3. Still have questions? Call customer service at 1-866-753-3837 or email Consumerquestions@Thermacell.net

STORAGE AND DISPOSAL

Do not contaminate water, food or feed by storage or disposal. **Pesticide Storage:** Store unused mats in original box in a cool, dry place inaccessible to children and pets. Store mosquito repeller and butane cartridges in original box in a cool, dry place away from sources of heat. Store batteries in cool, dry place away from heat or open flame. **Pesticide Disposal and Container Handling:** Non-refillable container; do not refill or reuse this container. **If cartridge is empty or for used mats:** Do not reuse empty packaging, wrappers or cartridges. Do not puncture or incinerate empty cartridges. Place in trash or offer for recycling if available. **If cartridge is partly filled or for unused mats:** Call your local solid waste agency for disposal instructions. Never place unused mats down any indoor or outdoor drain. **For unwanted mosquito repeller:** Place in trash or offer for recycling if available.

PRECAUTIONARY STATEMENTS

Hazards to Humans & Domestic Animals

CAUTION: Contains petroleum distillates. Harmful if swallowed or absorbed through skin. Causes moderate eye irritation. Avoid contact with skin, eyes or clothing. Wash hands thoroughly with soap and water after handling and before eating, drinking, chewing gum, using tobacco or using the toilet. Remove and wash contaminated clothing before reuse.