



GARRETT[®]

PERFORMANCE YOU TRUST

Distributed By

NOBLE|IQ

Contact Edward M. Levy
Director of Critical Infrastructure
+1.203.564.6561
ed.levy@nobleiq.com

TABLE OF CONTENTS

	Page
PERFORMANCE YOU TRUST	2
WALKTHROUGH COMPARISON	3
PARAGON	4
PD 6500I	5
MULTI ZONE	6
HANDHELD COMPARISON	7
HAND-HELD METAL DETECTORS	8
SECUREFLOW KIOSK	9
INTEGRATE YOUR SECURITY	10
ACCESSORIES & GARRETT VIRTUAL ACADEMY	11



PERFORMANCE YOU TRUST

OUR STORY

Charles and Eleanor Garrett founded Garrett Metal Detectors in Garland, Texas, from their home garage in 1964. Since that time, their leap of faith on a shoestring budget turned into a global business success. Today, the legacy of our founders lives on in the pride and attention to detail that Garrett employees put into every product we produce.

As a true American success story, Garrett is committed to quality made-in-the-USA manufacturing, demonstrated by our industry-leading 3-year warranty as well as the many Garrett products still reliably serving their owners after more than a decade of use.



The Garrett Security Division, founded in 1984 to provide metal detectors for the Los Angeles Olympic Games, now serves its global audience with the most reliable and flexible metal detectors on the market. The recently released *Garrett Guide* is a powerful successor to the world's most popular detector, the *Super Scanner V*. The *Paragon* walk-through metal detector is receiving international attention after achieving the coveted ECAC 2.1 with SMD certification, solidifying it as the most powerful and modern archway model on the market. Beyond these recent entrants, Garrett is continuing to develop new solutions for the security challenges of our highly connected modern world, with advanced integrations, remote security displays, and AI-enhanced detection technologies.

OUR VALUES

The world of security is secretive by nature, but Garrett prides itself on providing an honest and realistic assessment of the needs and objectives of its customers. We don't make the biggest promises in the industry, but we do make the biggest promises our industry can keep. We innovate to solve real problems, not invented ones, and we deliver easy-to-use solutions because that is what our busy customers need in their daily life. When you want to know if your security screening will really address your need, you can count on us to deliver an honest report and a spin-free disclosure of our capabilities. Get the solutions you need for your facility and get Performance You Trust when you work with Garrett.

OUR PRODUCTS

WALKTHROUGHS

*Reliable, High-Performance
Checkpoint Screening*

- **PARAGON™**
- **PD 6500i™**
- **MULTI ZONE™**

HANDHELDS

*Global Leader in Secondary
Screening Technology*

- **GARRETT GUIDE™**
- **SUPER SCANNER®**
- **SUPERWAND®**
- **THD™**

Security, Sport, Counterintelligence, CSI Metal Detector Solutions.



WALKTHROUGH COMPARISON



Features and Specifications	Multi Zone	PD 6500i	Paragon
Ambiscan - Set Different Programs on Entrance and Exit to Prevent Alarm Fatigue, Protect Facilities, and Prevent Theft.			✓
Crosspiece Storage Compartment for Charging Hand-Held Detectors Offline.			✓
IP 65-rated Dust and Moisture Resistant Standard Construction.			✓
Minimum 66 Detection Zones for Pinpoint Accuracy and Expedited Search.			✓
Zero Touch NFC for Wireless, Touchless, Secure Setup and Programming.			✓
Bilateral Screening for Field Uniformity Throughout Detector Archway Providing Equal Detection Capabilities for Floor Level Screening.		✓	✓
Dual Transmit and Receive in Both Panels (detection uniformity and dual-sided analysis, same as having two detectors in one unit).		✓	✓
Minimum 23 Standard Preloaded Programs to Accommodate any Security Level Requirement (key card not required).		✓	✓
Quick-Q Program to Enhance Throughput by 1.5 to 2 Times and Eliminate Divesting - Included with <i>Paragon</i> and Available as an Upgrade for the <i>PD 6500i</i> .		✓	✓
200 Steps of Adjustable Sensitivity Settings (for precise control setting).	✓	✓	✓
Can Integrate with Various Industry Technologies (cameras, door locks, turnstiles, bag scanners, etc.).	✓	✓	✓
Detection of Magnetic (ferrous), Non-Magnetic (non-ferrous), and Mixed Alloy Metals (ferrous and non-ferrous).	✓	✓	✓
Free Online Garrett Virtual Academy Training.	✓	✓	✓
Frequency Scan to Avoid Interference - Manual on <i>PD 6500i</i> , Automatic on <i>Multi Zone</i> and <i>Paragon</i> .	✓	✓	✓
Random Alarm Setting.	✓	✓	✓
Self-Calibrating with automatic self-test that runs on startup and when the OPERATE button is pressed.	✓	✓	✓

PARAGON™

THE PINNACLE OF PERFORMANCE

PN: 1172010 Paragon Complete Kit 30"

PN: 1172011 Paragon Complete Kit 32.5" (ADA Compliant)

Kits include: transport casters, quick-swap 14 Ah lithium battery, transport brace, remote control, and Guide hand-held metal detector.



Learn More

ADA Compliant
walkthrough
available



66 ZONES

Paragon brings with it an industry-leading 66 zones – left/center/right identification of targets across 22 horizontal bands.



AMBISCAN

With Ambiscan, one detector does the work of two. This Paragon feature allows supervisors to set two distinct programs and sensitivities based on the direction of traffic.



BILATERAL
DETECTION

Paragon has dual transmit and receive capability in both panels, a Garrett industry exclusive.



QUICK-Q

Optional settings allow cell phones to be ignored while still catching mass casualty weapons.



IP 65

Exacting construction provides protection from dust and moisture.



ZERO TOUCH

NFC card reader allows touchless settings adjustment.



2.1 WITH SMD
CERTIFIED



reddot winner 2025



intersec
awards
2024



PD 6500i™

WORLD'S MOST CERTIFIED DETECTOR



Learn More

PN: 1168441 PD 6500i Complete Kit 30"
PN: 1168442 PD 6500i Complete Kit 32.5" (ADA Compliant)

Kits include: *Super Scanner V*, transport casters, 14 Ah lithium battery, wireless sync module, and Quick-Q software

ADA Compliant
walkthrough
available



INTERNATIONAL SECURITY STANDARDS

PD 6500i meets the world's highest test certifications, including the following international airports:

TSA
(U.S. airports)

ECAC
(European airports)

Aena
(Spain airports)

DfT
(U.K. airports)

STAC
(French airports)



Tested and Trusted

Proven the world over in applications ranging from schools and sports arenas to airport and prisons.

Optimum performance

20-plus programs to address the needs of mass transit, courthouses, prisons, schools, events, loss prevention, and more.

33-Zone pinpointing

Left/Center/Right identification across 11 vertical zones.

Integration-friendly

Manage, observe, analyze, and connect with optional integration accessories.



MULTI ZONE™

AMERICAN QUALITY, GLOBAL PRICE



Learn More

PN: 1171002 *Multi Zone Complete Kit 30"*

PN: 1171007 *Multi Zone Complete Kit 32.5" (ADA Compliant)*

Kits include: *Super Scanner V*, transport casters and 14 Ah lithium battery.

ADA Compliant
walkthrough
available



20-Zone pinpointing

The Multi Zone's twenty vertical zones provide precise location of one or more objects simultaneously.

Advanced features, simple controls

Menu slider bar allows quick adjustment of setting values. Auto-Setup function scans electromagnetic environment to select optimal frequency.

Entry zone lights

View zone location from the ingress side, egress side, or both with precise LED clarity.

Standard battery backup

The Multi Zone comes with a 1.8Ahr emergency battery to prevent disruption of security due to power outages or accidental power cord disconnects.

Budget-friendly security

Get Garrett quality at an entry-level price.



HANDHELD COMPARISON



Features and Specifications	THD	Super Scanner V	Super Wand	Guide
7 selectable sensitivity levels for precise calibration to threats.				✓
USB-C rechargeable lithium ion battery to enhance product endurance and reduce waste.				✓
EMI Offset button to eliminate electromagnetic interference (EMI).				✓
Single or multi-unit modular charging base system to improve charging and storage efficiency.				✓
4-level charge indication for accurate comprehension of remaining charge.				✓
Weatherproof, dimpled, microtexture rubber grip for superior traction while screening in adverse environmental conditions.				✓
Heartbeat charging indicator to show charge progress while mounted to charging base.				✓
IP 65 Waterproof.				✓
Durable. Exceeds Mil-Std-810F (drop test) Method 516.5, procedures II and IV.		✓	✓	✓
8in (20.3cm) or more scan surface for rapid screening.		✓	✓	✓
Audio Alarm mode.		✓	✓	✓
Reduced sensitivity switch to eliminate rebar interference.		✓		✓
IP 66 Waterproof.	✓			
Integrated LED Flashlight.	✓			
360° detection area.	✓		✓	
Accurate detection of all ferrous, nonferrous and stainless steel weapons, contraband and other metallic objects.	✓	✓	✓	✓
Low-profile vibration and visual LED alarm mode.	✓	✓	✓	✓
Ultra sensitive response to metal objects.	✓	✓	✓	✓
Self-calibrating. Does not require ongoing adjustments.	✓	✓	✓	✓
3 Year Limited Parts/Labor Warranty.	✓	✓	✓	✓



GUIDE™

**NEXT GENERATION
HAND-HELD SECURITY**

- Simple, intuitive operation.
- Seven selectable sensitivity levels.
- Multiple controls for interference elimination.
- Refined styling yet rugged IP 65 construction.
- Integrated 125-hour Li-Ion battery.
- USB-C rechargeable.

PN: 1173000

SUPER SCANNER® V

WORLD'S MOST POPULAR DETECTOR

- Iconic hand-scanner that built the secondary screening category.
- Ideal for most secondary screening applications, challenging environmental conditions.
- Extremely durable with reliable, high-sensitivity detection.

PN: 1165190



THD™

**THREAT DETECTION FOR
OFFICER PROTECTION**

- High-sensitivity detection in a portable package.
- Tip flashlight for hands-free bag checks.
- Detector of choice for security on-the-go.
- Patrol-ready IP 66 construction.

PN: 1165900

SUPERWAND®

THE TSA'S CHOICE

- Maximum ease-of-use secondary screening.
- Improved ergonomics to reduce staff fatigue.
- Ideal for high-speed screening environments and for use with minimally trained staff.

PN: 1165800



Use either as a primary scanning tool or in secondary screening to pinpoint targets detected by a walk-through metal detector. Garrett hand-held detectors will detect ferrous, non-ferrous and stainless steel weapons, contraband, and other metallic objects.





SECUREFLOW™ KIOSK

SECONDARY SCREENING, FIRST-PLACE RESULTS

SecureFlow Kiosk

PN: 1174000



[Learn More](#)

SecureFlow Desktop Kiosk

PN: 1174200

Level up your checkpoint screening with the *SecureFlow* Kiosk. This secure wired tablet stand provides clear visual readouts of current walkthrough detection activity, the three most recent alarms, and program settings.

Enhance Throughput

Speed up secondary screening with historical information for secondary screening staff to ensure targeted scans and no wasted effort.

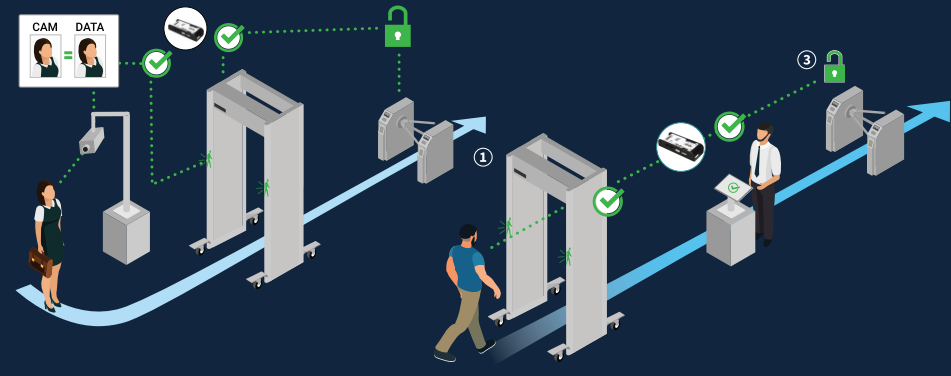
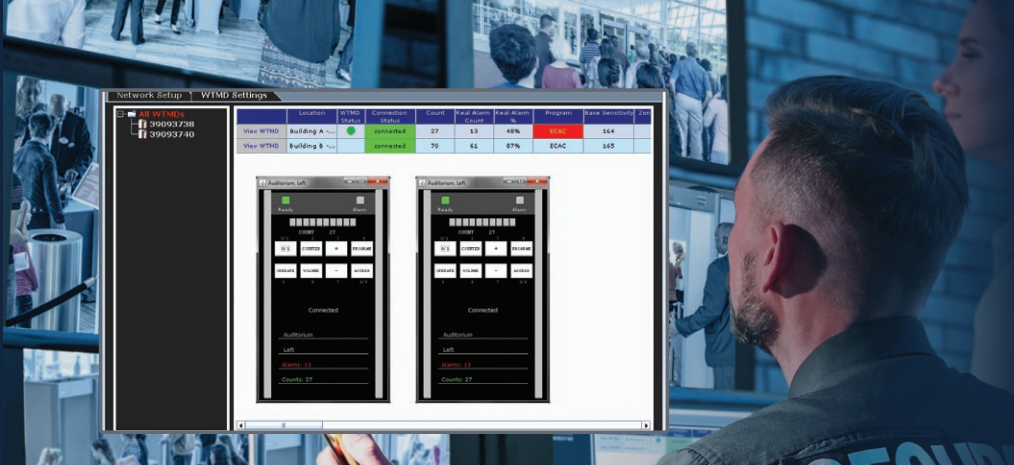
Improve Security

Minimize the risk of missed alarms and operator faulty memory with live detection readouts and historical data combined with panel zone lights for redundancy.

Customize Checkpoints

Flexible location of the *SecureFlow* Kiosk means more choice for checkpoint design and less dependency on a clear view of the walkthrough's panels.

For use with Garrett *Paragon* Walk-Through Metal Detectors.



IC MODULE v2

BRING DATA INTO YOUR SECURITY



Garrett iC Module v2
PN 1174300



[Learn More](#)

Manage the settings of groups of walkthroughs remotely and simultaneously.

Observe and diagnose issues from your network computer during an event. Don't wait for a panicked phone call or disappointing end-of-day report.

Analyze security checkpoint data from your events and make informed decisions about tomorrow.

Compatible with all Garrett *Paragon*, *PD 6500i*, and *Multi Zone* walkthroughs.

I/O RELAY MODULE

OPEN DOORS WITH WALK-THROUGH SECURITY



I/O Relay Module
PN 1171200



[Learn More](#)

Provides an isolated relay contact to control lights, doors, equipment. Internal dip switches provide 4 operating modes.

- Activate on alarm
- Activate on passage of each patron
- Activate on alarm, release on non-alarm
- Activate on non-alarm for 500ms
- Manipulate walkthrough settings with input signals

Compatible with all Garrett *Paragon*, *PD 6500i*, and *Multi Zone* walkthroughs.



LOOKING FOR ACCESSORIES?

Visit garrett.com for a full line of accessories for walkthroughs and hand-helds.



Garrett Guide™ with Charging Base

Includes Guide, Guide Charging Base, Wrist Strap, USB-C Cable, and High Current Power Adapter (with International adapters)

PN: 1173010



Zero Touch NFC Card Kit, Programmable

Read/write-capable NFC card kit for altering walkthrough settings.

3x Setup, 3x Preset, and 1x Configuration Clone

PN: 1630600 *for Paragon only*



Garrett Guide™ Checkpoint Kit

Includes (5) Guide Metal Detectors, (5) Charging Bases, (5) Wrist Straps, (5) USB-C Cables, and (1) High Current Power Adapter (with International adapters)

PN: 1173020



Wellness Check NFC

PN: 1631100
for Paragon only



Paragon Battery Charger

PN: 1630800
for Paragon only

COMPREHENSIVE TRAINING AVAILABLE



Garrett's Virtual Academy is a free online training platform with video content and graded knowledge checks so users and supervisors can learn with confidence. The videos are divided into short segments to ensure trainees are not bogged down in too many details and that each course can be completed at the user's convenience.



ENROLL TODAY!

Security Division

1881 W. State Street
Garland, TX 75042
USA

Email: security@garrett.com
Toll Free (U.S. and Canada): 1.800.234.6151
Tel: +1.972.494.6151

Tech Support

Email: securitytechsupport@garrett.com
Email (Int'l): emeatechsupport@garrett.com
Tel: +1.214.703.8777
Tel (Int'l): +39.351.787.2315



SOCIAL MEDIA