

Send your officers out with a Guardian Angel on their shoulders.

Wearable, hands-free lighting designed to keep law enforcement officers safe.

ELITE SERIES™
Wearable & Mountable
Safety Light



Multiple Scenarios, One Solution



Traffic & Crash Management

"In reference to the light, the name fits what it is. It's a Guardian Angel. And hopefully some day it saves others."

OFFICER RICHARD MAZZIO, PORT ST. LUCIE POLICE DEPARTMENT
Suffered life-long injuries when a driver hit him at a crash scene.



Event Control

"We've experienced the benefits of our deputies being immediately recognizable in significant crowd events, like large concerts. This reduces response time when assisting fellow deputies and those who need us in a large crowds."

SHERIFF DAVE GERBER, WALWORTH CO. SHERIFF'S OFFICE
On working crowd control at large events.



Low-Visibility Conditions

"Crash victims could see that flashing light and they felt a sense of calm knowing it was someone coming to checking on them. It's lived up to my expectations – and not only that it's exceeded them."

CHIEF KENNETH REARDON, DIVERNON POLICE DEPARTMENT
On responding to a 100-vehicle crash during a dust storm.



Roadside Response

"Wearing a Guardian Angel light while working roadside certainly enhances your safety. They alert drivers to your presence and position with the multi-light combinations, while outside of the patrol vehicle. I, along with many police leaders, can see no downside to deploying Guardian Angel products."

COLONEL TRACY TROTT (RET.), TENNESSEE HIGHWAY PATROL
On working roadside response.



Infrared Capability

"The infrared version is invaluable to us. It lets our officers operate without giving their positions away, but allows us to track them using drones."

CAPTAIN ROBERT J. HALL, WALWORTH CO. SHERIFF'S OFFICE
On Guardian Angel infrared capabilities.



VISIBILITY

Long range visibility rated for 5+ miles using high powered LEDs.



DURABILITY

Waterproof, shockproof, dustproof, IP68 rated.



HANDS-FREE

Elite Series™ lights attach in seconds with mounts designed for law enforcement.



MAGNETIC

Built-in, rare-Earth magnet and mounting system secures your light nearly anywhere.



360° LIGHTING PATTERNS

Front and rear LEDs can be set as constant on, constant flashing or scrolling sequence.

MULTIPLE OPTIONS AVAILABLE
TO FIT YOUR SPECIFIC NEEDS

GA GUARDIAN ANGEL

NOBLE | IQ

Mounting Made Easy

Guardian Angel offers a variety of mounts designed to fit various tactical carriers and uniforms agencies may use in the line of duty.



Proper Placement Equals Maximum Visibility

The most effective placement is on the highest part of the shoulder. This allows the rear LEDs to keep officers visible from behind, while also offering a hands-free, forward-facing light. If possible, **avoid placing it on the chest area of your carrier**, as it limits the light's ability to protect you in all directions.



Magnet or Hard Mount, The Choice is Yours

Each mount features a rare-Earth magnet that works with all our Elite Series™ lights. The magnet allows for quick attachment and can withstand up to 22 pounds of force. Additionally, **our lights and mounts can be hard mounted** using four screws (included with Elite Series™ lights) for additional security.

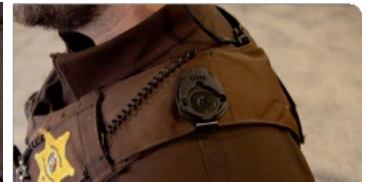
OUTER CARRIER

Universal Clip Mount

ACC-UCM

Strong clip tension with rubber backing securely clips to almost any object – outer carriers, belts, bags, tactical vests, dog collars and more.

Most Popular
Outer Carrier



OUTER CARRIER

Standard Mount

ACC-MMB

Velcro strap securely attaches to outer carrier. Pair this mount with a Device Tether (ACC-DTS) to prevent the light from being lost if it's knocked loose.

Included with
ELITE SERIES™
Device



DEVICE
TETHER
(ACC-DTS)

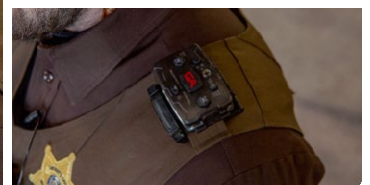
OUTER CARRIER / EPAULET

Strap Epaulet Clip Mount

ACC-SCM

The best mount for Class A & B uniforms featuring epaulet shoulder straps. Hard mount it with included screws or pair it with a Device Tether (ACC-DTS).

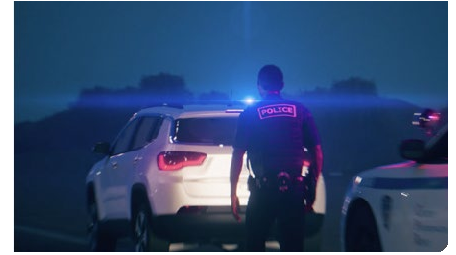
Most Popular
Uniform Mount



The Data Doesn't Lie

A peer-reviewed study from Battelle Memorial Institute found wearable Guardian Angel lights significantly improved visibility for professionals working roadside.

- Drivers report an **89% increase in roadside visibility** when used with a vest, compared to a hi-vis vest alone.
- **100% of drivers slowed down** upon seeing a worker/officer wearing a Guardian Angel.



Shedding Light on Common Myths

Wearing a Light Will "Attract Drivers" Toward Me

FALSE – A recent peer-reviewed study, along with others, have found this not to be true. In fact, it's quite the opposite. Drivers are more prone to move over.

A Wearable Light Will Make Me a Target

FALSE – "The device makes you no more a target than your flashlight does. The real target is your back to traffic that's going 80 MPH."

COLONEL TRACY TROTT (RET.),
TENNESSEE HIGHWAY PATROL

A Wearable Light is Too Bright & Distracting

FALSE – Our lights have multiple brightness settings and flash patterns.

Meet the Elite Series™ Wearable Safety Light



360° LIGHTING PROTECTION

LEARN MORE AT
GUARDIANANGEL.COM