



# WLAN RADIO SYSTEM



Distributed By NOBLE Supply & Logistics LLC  
Edward M. Levy | Director of Critical Infrastructure  
+1 (203) 564-6561 | [elevy@noble.com](mailto:elevy@noble.com) | [www.noble.com/CI](http://www.noble.com/CI)

# Real-time Voice Communication Tool that

## Tunnel Construction and Mining



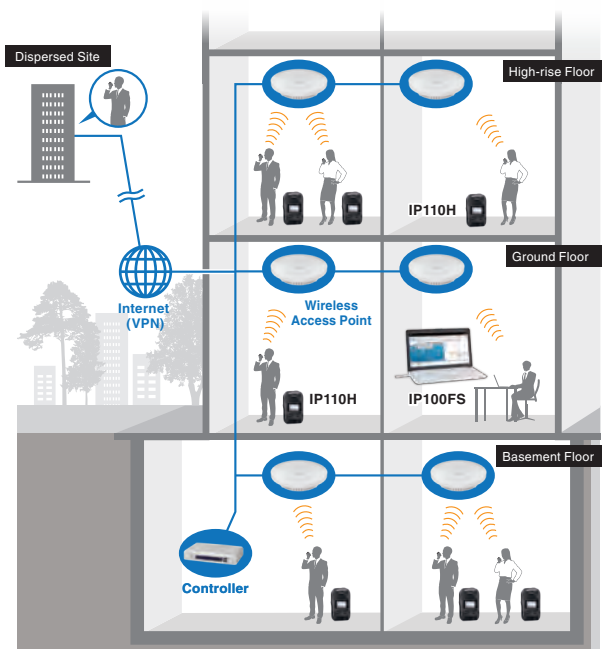
The communication area can be flexibly expanded as the work progresses. In addition, the safety of the user can be confirmed by the Man down and Motion sensor functions.

## Factories and Warehouses



The WLAN radio can cover all working sites, offices and remote bases through an IP network (VPN). Wherever you are in the network, you can share the information you need.

## WLAN Radio System Features



### Scalable System Using Wireless LAN Network

Deploying wireless access points over an IP network, the WLAN radio system can expand the communication range.

### License-Free Communication

The WLAN radio uses common wireless LAN network frequencies, which do not need communication fees for running the system.

### Communication with Dispersed Sites

When connected over the Internet VPN, an WLAN radios can communicate between dispersed sites.

### Simultaneous TalkListen Function

The WLAN radio provides full duplex communication like a telephone conversation and one-to-many communication.

TalkListen works with or without external headset.

**Talk Listen**  
Simultaneous

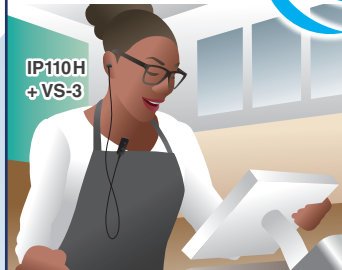
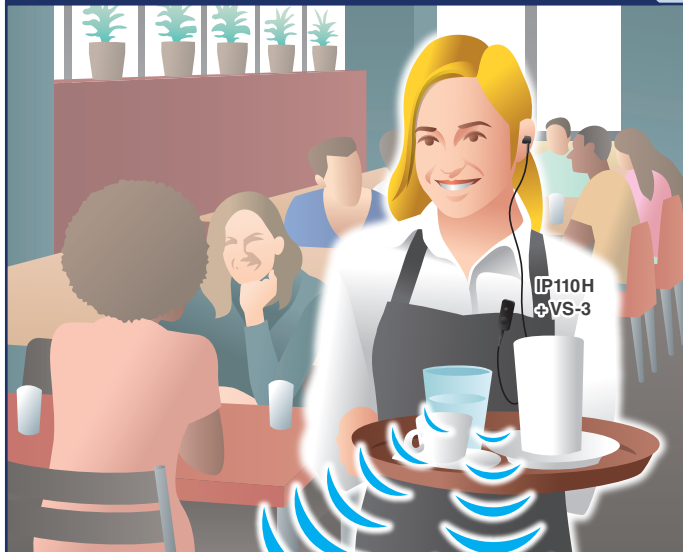
# Instantly Connects You with Your Team

## Shopping Centers and Malls



By deploying access points along the IP network, the WLAN radio can communicate all the way from the basement to the top floor. Real-time simultaneous Talk and Listen is possible.

## Hotel and Restaurant Management



You can use the WLAN radio as a handy communication tool between staff members. With optional Bluetooth® headset, VS-3, the WLAN radio can be used wirelessly and inconspicuously.

## Product Lineups

# Compact, Lightweight Wireless LAN Radio with Simultaneous TalkListen Function



- All, Group, Talkgroup, Individual and Telephone Calls
- 1000 mW loud audio from internal speaker
- Optional Bluetooth® headset, VS-3
- IP67 / IP54 waterproof and dust-tight
- Battery can be charged through the USB Type-C™ cable
- More than 20 hours of operating time (Tx 1: Rx 1: Stand-by 8 duty ratio)
- WPA2, WPA-Enterprise security

- <Other features>
- Audio is recorded for instant review
  - Vibration alert function
  - Motion/Stationary detection, man down and lone worker functions
  - Over-the-Air programming
  - Compatible with the IP100H WLAN radio

## WLAN Transceiver IP110H



## Remote Communicator IP100FS

(Supplied with a USB flash drive)



- Windows™ PC based communication app
- Obtains location info of each radio based on the access point being used
- Management functions such as remote lock function

# WLAN RADIO SYSTEM

## IP110H SPECIFICATIONS

<b>Wireless Standards</b>	IEEE802.11 a/b/g/n/ac	<b>Dimensions</b>	57×96.9×25.1 mm, 2.2×3.8×1.0 in (W×H×D; Projections are not included)
<b>Frequency Range</b> *1	2.4–2.4835 GHz, 5.15–5.35, 5.47–5.85 GHz	<b>Weight (approximate)</b>	146 g, 5.2 oz
<b>Security</b>	WEP (64/128-bit), WPA2-Enterprise, WPA-Enterprise, WPA-PSK, WPA2-PSK	<b>Operating Time</b>	More than 20 hours (TX 1 : RX 1 : Stand-by 8 duty ratio)
<b>AF Output Power</b>	1000 mW typ. (Internal SP) / 300 mW typ. (External SP)	<b>Charging Time</b>	4 hours (With BC-257 and BC-228)
<b>Operating Temperature</b>	–10°C to +60°C, +14°F to +140°F	<b>IP Rating</b>	IP67 / IP54
<b>Charging Temperature</b>	0°C to +60°C, +32°F to +140°F	<b>MIL-STD-810</b>	Passed 12 categories of environmental tests
		<b>Supplied Accessories</b>	OPC-2480 USB charger cable, MBB-1 belt clip

\*All stated specifications are subject to change without notice or obligation. \*1 Authorized frequency range and channels may differ depending on the country.




## OPTIONAL ACCESSORIES FOR IP110H

<p><b>Bluetooth® Headset</b></p> <p><b>VS-3</b></p> 	<p><b>Speaker-Microphones</b></p> <p><b>HM-186PI</b></p> 	<p><b>HM-228</b> Waterproof</p> 	<p><b>Earphone-Microphone</b></p> <p><b>HM-179PI</b></p> 
<p><b>Headsets</b></p> <p><b>HS-94</b> Earhook type</p> 	<p><b>HS-95</b> Neck arm type</p> 	<p><b>HS-97</b> Throat type</p> 	<p><b>Plug Adapter Cable</b></p> <p><b>OPC-2133</b> 2.5 mm stereo jack to 1 pin connector</p> 
<p><b>Earphone</b></p> <p><b>SP-16PIBW</b> Earhook type</p> 	<p><b>Charger Accessories</b></p> <p><b>BC-257</b> Charger stand (Connectable up to 4 units.)</p> 	<p><b>BC-228</b> AC adapter for multiple BC-257 connections</p> 	<p><b>Other Accessories</b></p> <p><b>OPC-2132</b> Plug adapter cable 2.5 mm stereo / 3.5 mm stereo jack to 1 pin connector</p> 
			<p><b>MBB-1</b> Belt clip. Same as supplied.</p> 

## IP100FS SYSTEM REQUIREMENTS

<b>Operating System</b>	Windows™ 11, Windows™ 10 (32-bit/64-bit), Windows™ 8.1 (32-bit/64-bit) (Except for Windows™ RT)
<b>CPU</b>	Intel® Core™ 2 Duo Processor E6600/ 2.4 GHz or faster
<b>System Memory</b>	2 GB or more
<b>Hard Disk Space</b>	1 GB of disk space (for saving log files)
<b>Display Resolution</b>	Full HD (1920x1080 pixel) recommended / XGA (1024x768 pixel) at least
<b>LAN</b>	100BASE-TX or faster Ethernet interface
<b>USB</b>	USB1.1 / 2.0
<b>Other</b>	Speaker, microphone or headset

## OPTIONAL ACCESSORIES FOR IP100FS

<p><b>Microphones</b></p> <p><b>SM-26</b> Desktop microphone</p> 	<p><b>HM-152</b> Hand microphone</p> 	<p><b>PTT Microphone Adapter</b></p> <p><b>CT-23</b></p> 
---	--	--

## WLAN RADIO SYSTEM EQUIPMENT

<p><b>IP1000C</b> WLAN Radio Controller</p> <ul style="list-style-type: none"> <li>Capable of controlling up to 100 WLAN radios (including IP100FS)</li> </ul> 	<p><b>VE-PG4</b> RoIP Gateway (WLAN Radio controller built-in)</p> <ul style="list-style-type: none"> <li>Capable of controlling up to 50 WLAN radios (including IP100FS)</li> <li>Interconnects with IP Phone and other digital and/or analog radio systems</li> <li>VPN function</li> </ul> 	<p><b>AP-95M</b> Wireless LAN Access Point</p> <ul style="list-style-type: none"> <li>IEEE 802.11 a/b/g/n/ac compliant wireless LAN access point</li> <li>PoE (Power over Ethernet) capability</li> </ul> 
--	--	---

Icom, Icom Inc. and the Icom logo are registered trademarks of Icom Incorporated (Japan) in Japan, the United States, the United Kingdom, Germany, France, Spain, Russia, Australia, New Zealand, and/or other countries. The Bluetooth® word mark and logos are registered trademarks owned by Bluetooth SIG, Inc. and any use of such marks by Icom Inc. is under license. Windows is a trademark of the Microsoft group of companies. Intel, the Intel logo, and Intel Core are trademarks of Intel Corporation or its subsidiaries. USB Type-C and USB-C are trademarks of USB Implementers Forum. All other trademarks are the properties of their respective holders.

**Icom Inc.**

1-1-32, Kamiminami, Hirano-Ku, Osaka 547-0003, Japan Phone: +81 (06) 6793 5302 Fax: +81 (06) 6793 0013

[www.icomjapan.com](http://www.icomjapan.com)

**Icom America Inc.**  
[www.icomamerica.com](http://www.icomamerica.com)

**Icom (Europe) GmbH**  
[www.icomeurope.com](http://www.icomeurope.com)

**Icom (Australia) Pty. Ltd.**  
[www.icom.net.au](http://www.icom.net.au)

Your local distributor/dealer:

**Icom Canada**  
[www.icomcanada.com](http://www.icomcanada.com)

**Icom Spain S.L.**  
[www.icomspain.com](http://www.icomspain.com)

**Icom Asia Co., Ltd.**  
[www.icomasia.com](http://www.icomasia.com)

**NOBLE**

**Icom Brazil**  
E-mail: [sales@icombrasil.com](mailto:sales@icombrasil.com)

**Icom (UK) Ltd.**  
[www.icomuk.co.uk](http://www.icomuk.co.uk)

**Shanghai Icom Ltd.**  
[www.bjicom.com](http://www.bjicom.com)

Edward M. Levy  
Director of Critical Infrastructure  
+1 (203) 564-6561 | [elevy@noble.com](mailto:elevy@noble.com)

**Icom France s.a.s.**  
[www.icom-france.com](http://www.icom-france.com)