

My Visit to Growing Chefs! Garden Programs



Today I am going to **GROWING CHEFS! ONTARIO** at The Grove.

I will enter through the glass doors under the Growing Chefs! sign.





I will have **FUN** at Growing Chefs!

I will **LEARN** all about gardening and taking care of plants.

When I get to Growing Chefs!,
the staff will say “**HELLO!**”

They might give me a **NAME**
TAG that I can wear on my shirt.





I might need to **WAIT** for the gardening activity to start.

I can **SIT** and wait for others to show up.

While I wait, I can **MEET** other participants!



BATHROOMS for men and women are down the hallway.

If I need to go to the bathroom, I can **ASK** a staff member to take me.



**Gender Inclusive
Washroom
(Single Stall)**



The universal and gender inclusive **BATHROOM** is down the hallway.

If I need to go to the bathroom, I can **ASK** a staff member to take me.

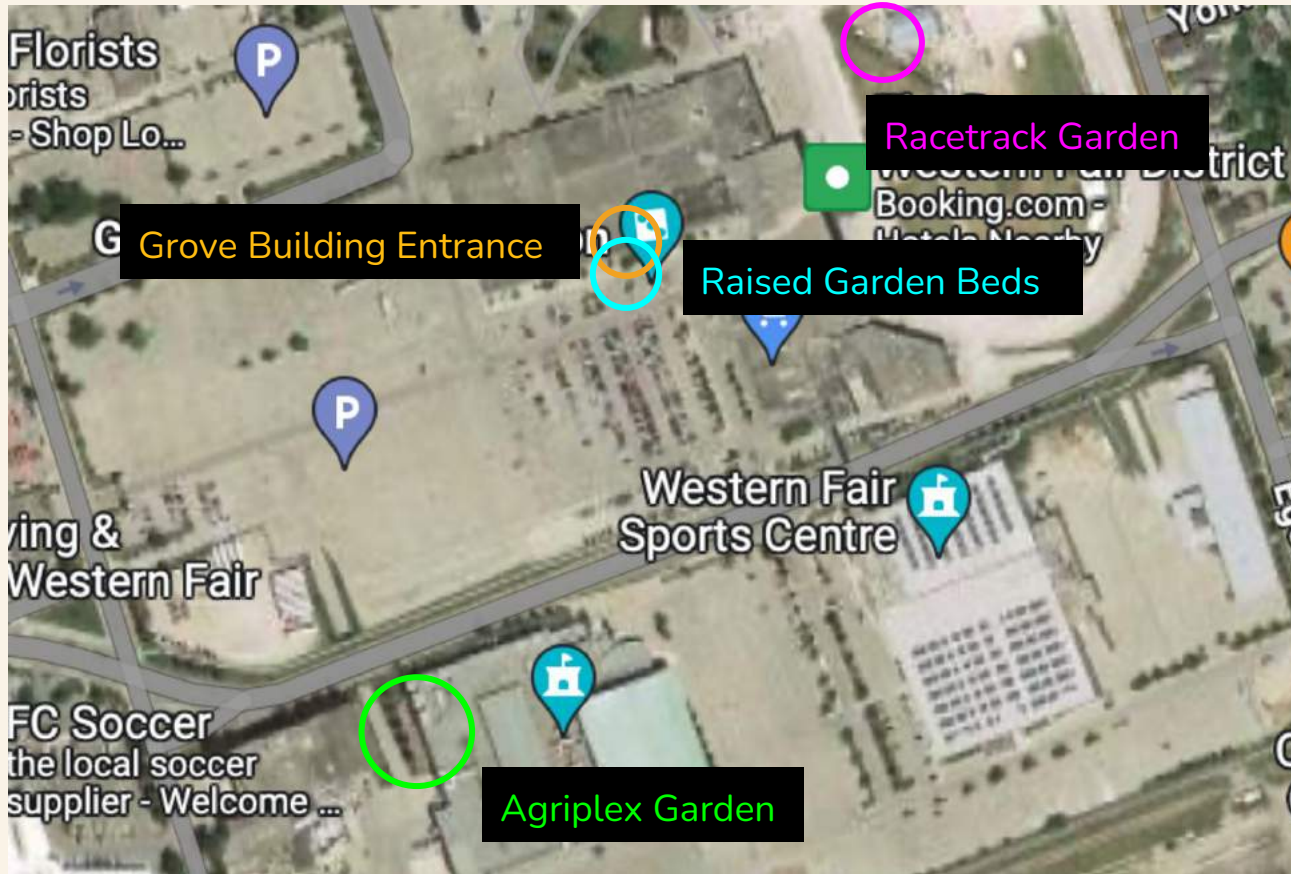
While at Growing Chefs, I will need to make sure I **LISTEN** to the rules and keep **SAFE**.

I might **HEAR** some noisy construction in the hallways, and stay away from it.

I will be **RESPECTFUL** to other people while we work together.



Garden Locations



Agriplex Garden

You might visit our **AGRIPLEX GARDEN** which has a hoophouse, and raised garden beds full of lots of interesting edible plants.





To arrive at the Agriplex Garden, we have to **WALK A FEW MINUTES** through a parking lot in front of The Grove.

There will **ALWAYS** be an **ADULT** walking through the parking lot with you. We **FOLLOW** the leader to the greenhouse!

We will **STAY** with the group whenever we are outside.

On the way to the Agriplex Garden,
we will pass by the by the
NATURALIZED PLANTING AREA.

We might **STOP** and **OBSERVE** the
plants growing here for a few
minutes.



Once we have arrived at the Agriplex Garden, we will **WAIT** at the front of the gate.

We will **LISTEN** to instructions on what to do next.





There are multiple raised beds full of different produce items.

Can you spot the **KALE**?

Can you spot the **SWISS CHARD**?

Can you spot the **FLOWERS**?

At the back of the Agriplex
Garden, there is a HOOP HOUSE.

Can you find any
STRAWBERRIES?

Can you find any
TOMATOES?

There MAY be some **INSECTS**,
which protect the garden!





I will get to **TOUR** the garden.

I might get to **SMELL** or **TASTE**
a new plant if the leader says I
can.

I will not **TOUCH** any plants
without asking first. Some of
these veggies and plants go to
families who need them!

We have to walk under a
TUNNEL.

For **ACCESSIBILITY**, those who require a ride to the garden can drive right under the tunnel. Let us know in advance if this needed!

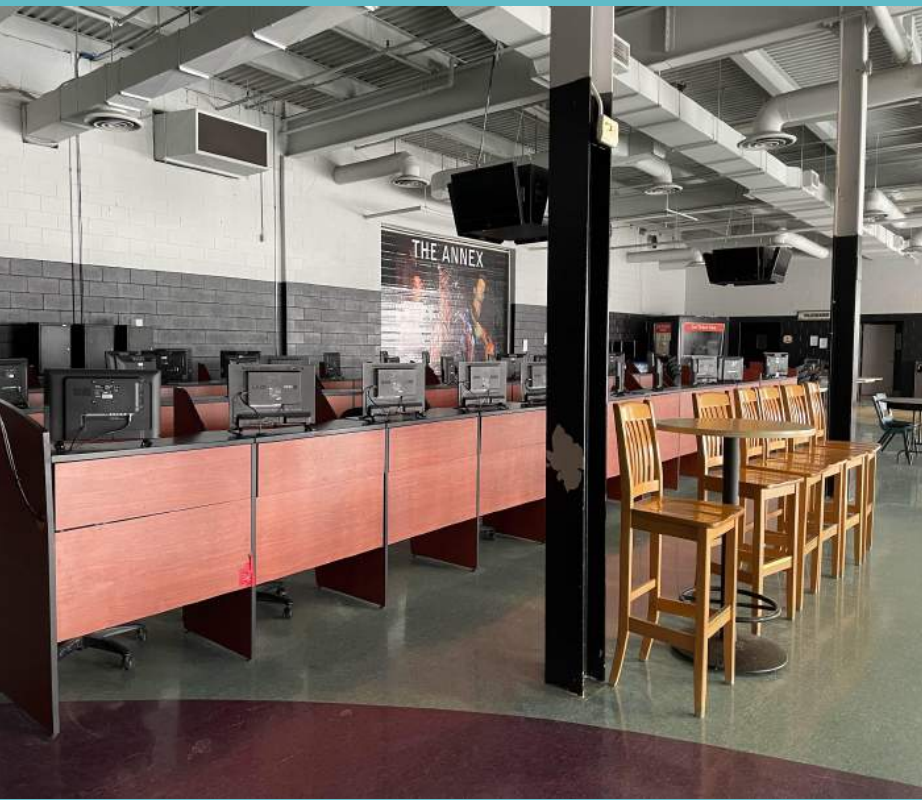




Racetrack Garden

The Racetrack Garden is a **HEATED** year-round greenhouse.

This greenhouse is in the middle of a **HORSE RACING TRACK!**



We might pass by this shared space full of computers on the way outside! Please **DO NOT TOUCH** anything.



The accessible entrance to the greenhouse is by **VEHICLE**.

If you require an **ACCESSIBLE ENTRANCE**, enter at the corner of Egerton Street and Dundas Street. Let us know in advance if this needed!

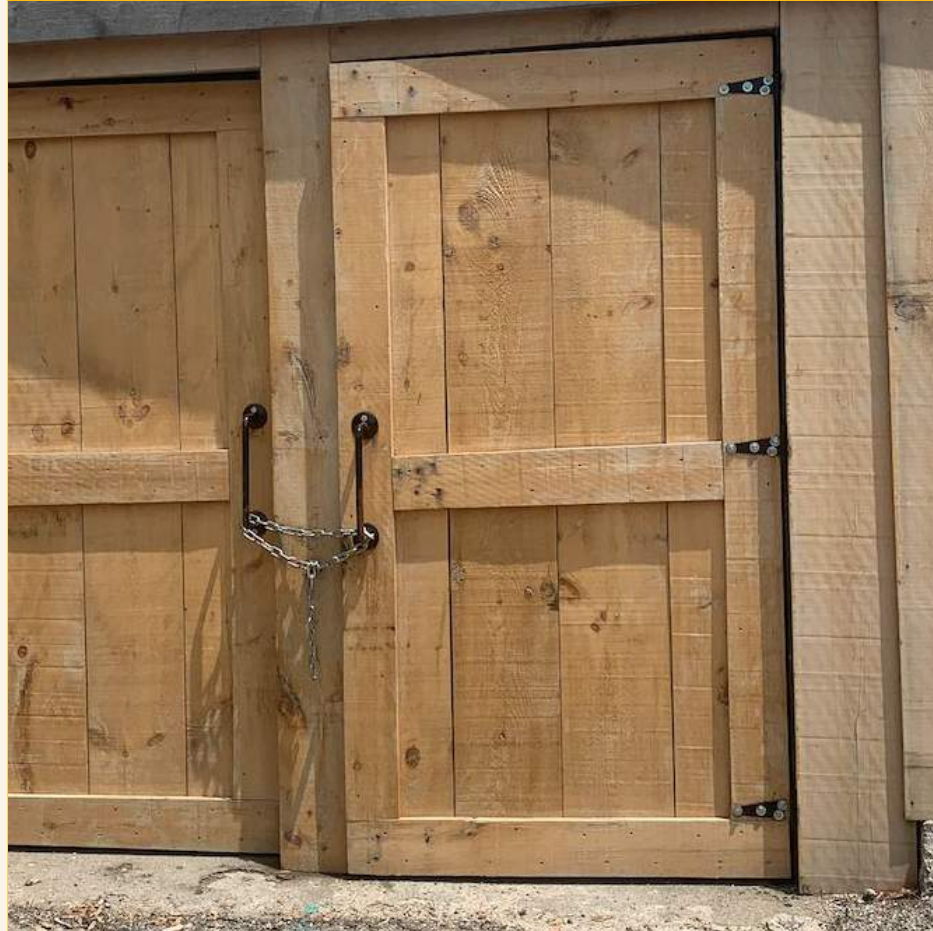


Most cars and vans can fit **UNDER** the racetrack if it is less than 8 feet tall. This does not require special clearance.

Before we can get to the greenhouse, those who can use the stairs will go through a **TUNNEL**.

There are about **30 steps** in the tunnel!

I might **HEAR** my voice echo!





I might **SMELL** something stinky on my way to the greenhouse - some **COMPOST!** The food from the kitchen goes here to break down and help the plants **GROW.**

I might **HEAR** the tractors go by on the racetracks.

Now that we have made it to the **GREENHOUSE** it is time to **WAIT** for instructions from our leader!



I might **PLANT** seeds while I am at the greenhouse.

I might **FILL** small planters with soil to get them ready for plants.



I might **WATER** the plants that are thirsty.



I might **PICK** some plants that are ready to be eaten.





If I want to, I might **SEE** worms and bugs in the worm compost!

I can **HOLD** a worm if I am very **GENTLE** and respectful.

I will **GO** back inside the building
when the program is done.

I will **STAY** with the group when I
am walking back.

We will take the **SAME ROUTE**
we took to get there!



Raised Garden Beds

We have **FOUR** raised garden beds outside our entrance!

We grow edible flowers, greens and herbs. Some plants have a strong smell, these are the herbs, can you **SMELL** them?

The garden bed in the photo is accessible.



Once we have returned, I will gather my belongings and **WAIT** for everyone to be ready to go.

I will **WAIT** until someone is here to sign me out (unless I am old enough to sign myself out and I have special permission).





It is time to **LEAVE** Growing Chefs!

I say **GOODBYE** to the staff and leave with the adult who is picking me up.

I had **FUN** learning about food and gardening at Growing Chefs!

**We look forward to your visit with
Growing Chefs! Ontario at The Grove!**

If you have any questions or accessibility
concerns, please contact Christy Cook
Email: info@growingchefsontario.ca
Phone: (519)-679-4769

