

# wiseup

CANDIDATE ONBOARDING

## WISEUP

Wiseup is an online mentoring platform with 150+ quality mentors, who are passionate about supporting career progression and well-being. Please see <https://wiseupnetworks.com>.

In such challenging times, we can professionally and personally support people going through career change. Many people are transitioning into remote teams and a rapidly changing workplace environment.

Whilst we help individuals who come to our platform, the power of mentoring can truly be experienced in partnership with forward-thinking recruitment agencies looking to go that extra mile to support their candidates.



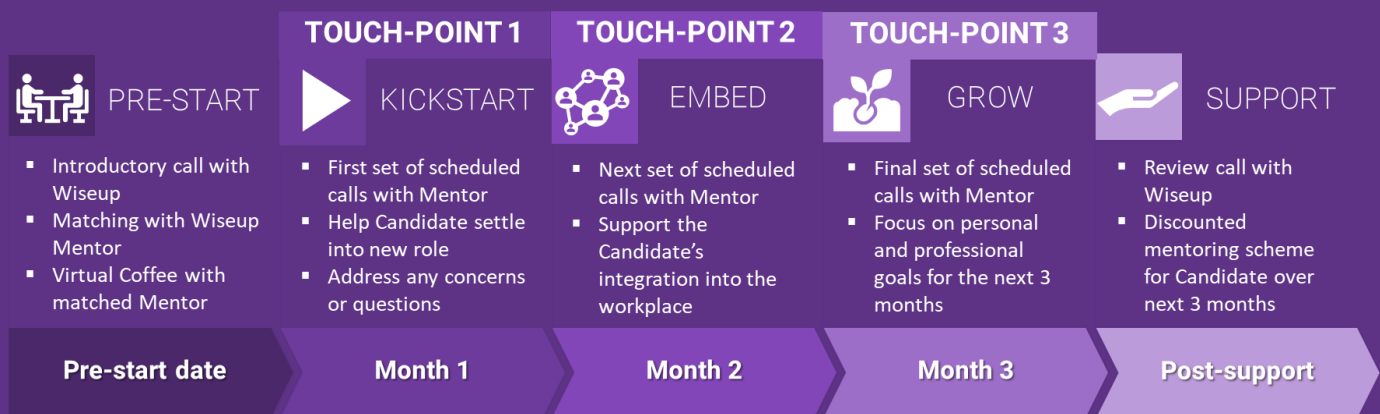
## CANDIDATE ONBOARDING SUPPORT

Together we agree on a pool of experienced mentors to support your candidates. Each candidate is manually matched up to a suitable mentor, who professionally and personally supports the candidate over the first months of their new role.

We work collaboratively to support the recruiter's own onboarding process. The added layer of mentoring support increases candidate satisfaction, decreases early leavers and gives the recruiter another USP for new and existing clients.

## HOW IT WORKS

We will work with you to create a bespoke mentoring support service. The recruiter can secure a number of mentoring hours over an agreed time period for the candidate. Process for the Standard and Enhanced Support below:



## SUPPORT PACKAGES PER CANDIDATE

The support arrangement is based on the length of time you wish the support to be delivered over, and the number of hours of mentoring over that term. **£100 + VAT per hour for Standard Mentoring. £400 + VAT per hour for Executive Mentoring. For every 6 hours total price is reduced by £25 + VAT. Example of Standard Mentoring costs:**

### STANDARD SUPPORT

**3 hours** of support over **3 months: £300 + VAT**



### ENHANCED SUPPORT

**6 hours** of support over **3 months: £575 + VAT**



### EXTENDED SUPPORT

Support over **6 months** – number of hours to be agreed



Contact us: [info@wiseupnetworks.com](mailto:info@wiseupnetworks.com)