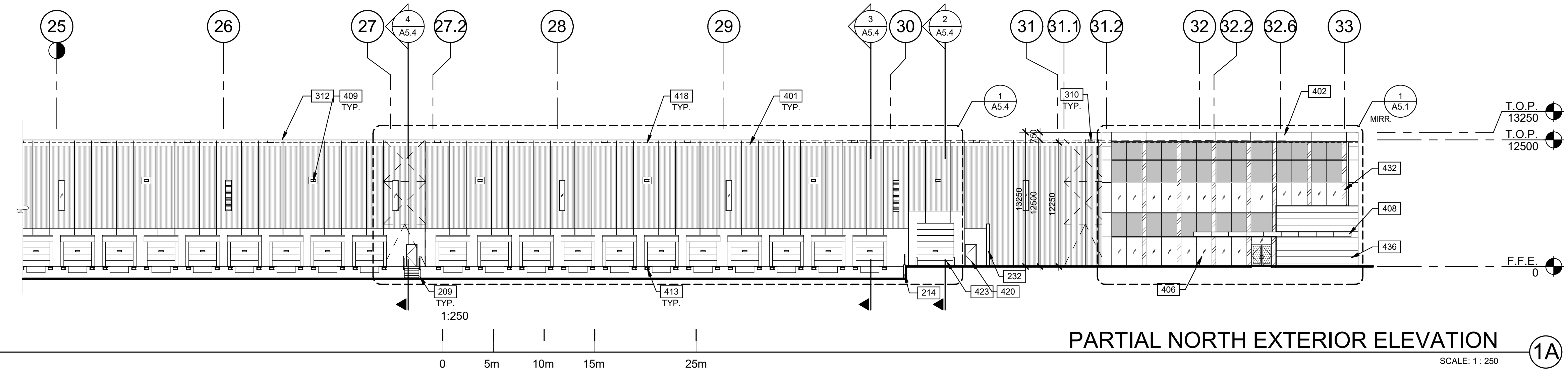
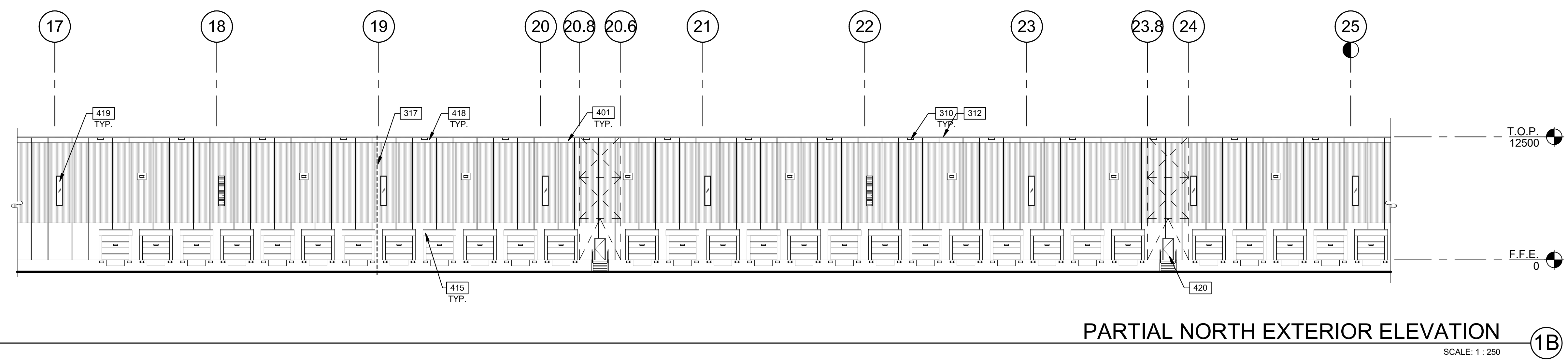


NORTH EXTERIOR ELEVATION ①
SCALE: 1 : 500



PARTIAL NORTH EXTERIOR ELEVATION ①A
SCALE: 1 : 250



PARTIAL NORTH EXTERIOR ELEVATION ①B
SCALE: 1 : 250

LEGENDS

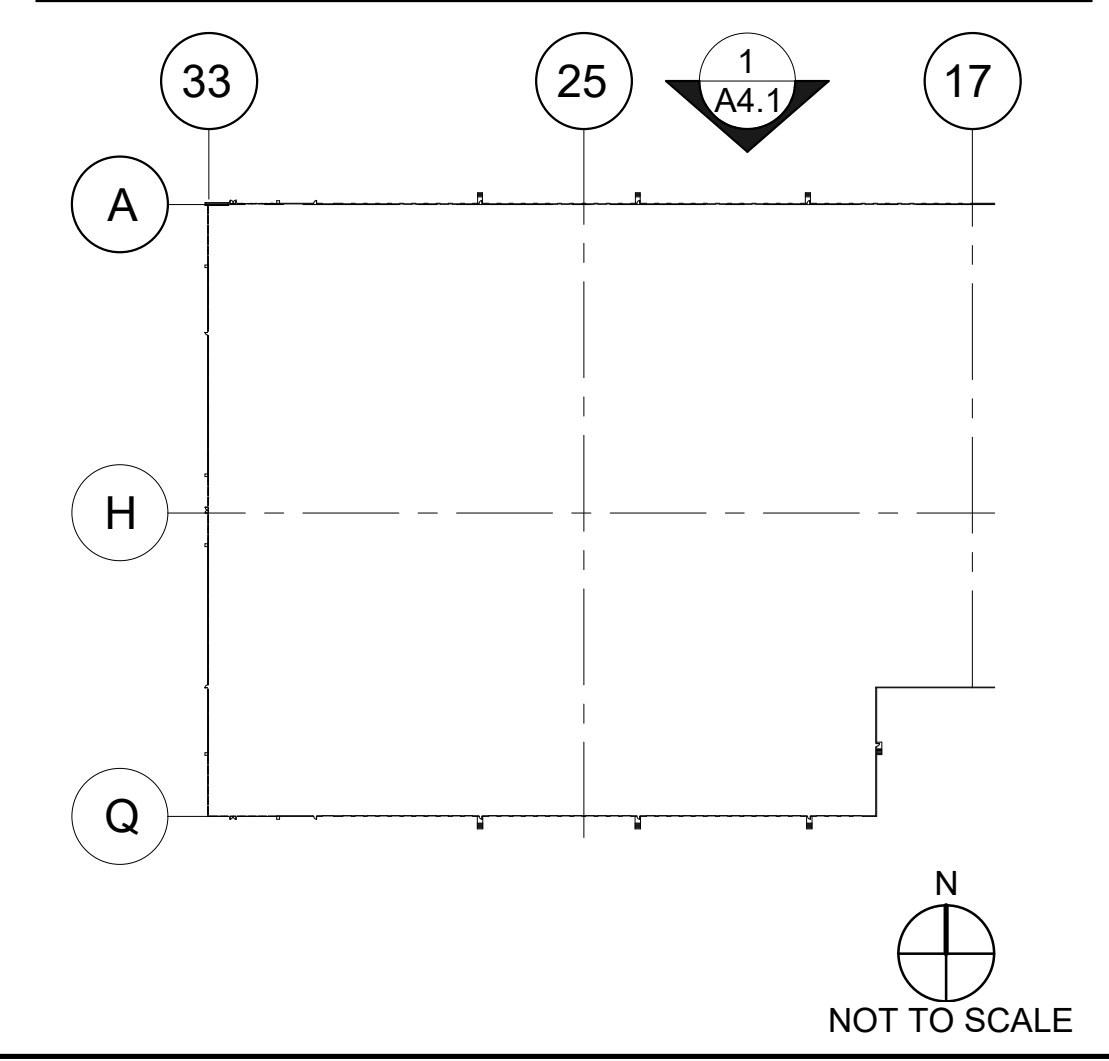
GLASS:

	TINTED VISION GLASS - DARK GREY
	COLOUR 1 SPANDREL - LIGHT GREY
	SPANDREL GLASS COLOUR 2 SPANDREL - DARK GREY INSULATION UNITS WITH METAL BACKPAN AND OUTER SHEET
	LIGHT GREY COMPOSITE PANEL SYSTEM WITH OVERHANG, TYPICAL
	WOOD COMPOSITE MATERIAL
	SMOOTH PRECAST
	RIBBED PRECAST

NOTES

- 209 150mm DIA. STEEL PIPE BOLLARD. CONCRETE FILLED MIN. 1200mm ABOVE FINISH GRADE.
- 214 CONCRETE RETAINING WALL.
- 232 SCREENWALL.
- 310 ROOF SCUPPER.
- 312 PREFINISHED METAL CAP FLASHING.
- 317 EXPANSION JOINT. SEE STRUCTURAL DRAWINGS.
- 401 WHITE CONCRETE FLEXWALL PRECAST SYSTEM 2400mm WIDE. TYPICAL.
- 402 ALUMINUM COMPOSITE PANEL FASCIA AND METAL SOFFIT.
- 406 ALUMINUM CURTAIN WALL SYSTEM WITH 1" INSULATED GLASS.
- 408 PREFINISHED ALUMINUM COMPOSITE PANEL CANOPY.
- 409 WALL PACK, MOUNTED. WHITE TO MATCH EXISTING.
- 413 DOCK BUMPER.
- 415 DOCK SHELTER.
- 418 LINE OF ROOF BEYOND.
- 419 610mm X 3048mm CLERESTORY WINDOW.
- 420 HOLLOW METAL MAN DOOR, PAINTED.
- 423 3860 x 4270 SECTIONAL OVERHEAD GRADE LEVEL DOOR.
- 432 SPANDREL PANEL IN CURTAIN WALL GLAZING SYSTEM.
- 436 PARKLEX PANEL SYSTEM. GC TO COORDINATE.

KEYPLAN



WARE MALCOMB
Leading Design for Commercial Real Estate

architecture
planning
interiors
graphics
civil engineering

180 Bess Peis Mills Dr #103
Vaughan, Ontario, Canada L4K 5W4
P: 905.740.1231
F: 905.248.3344

ONTARIO ASSOCIATION
OF
ARCHITECTS

FRANK DI ROMA
LICENCE
6758

ANATOLIA TILE & STONE
PH3 PILLSWORTH INDUSTRIAL

anatolia
CAPITAL CORP

100 PILLSWORTH ROAD
CALEDON, ONTARIO,
CANADA

EXTERIOR ELEVATIONS

DATE	REMARKS
06/25/2020	ISSUED FOR SPA
07/21/2020	ISSUED FOR CONSTRUCTION
10/15/2020	REVISED AS NOTED
11/16/2020	ISSUED FOR CONDITIONAL PERMIT
12/08/2020	RESPONSE TO CITY COMMENT
12/23/2020	ISSUED FOR SPA

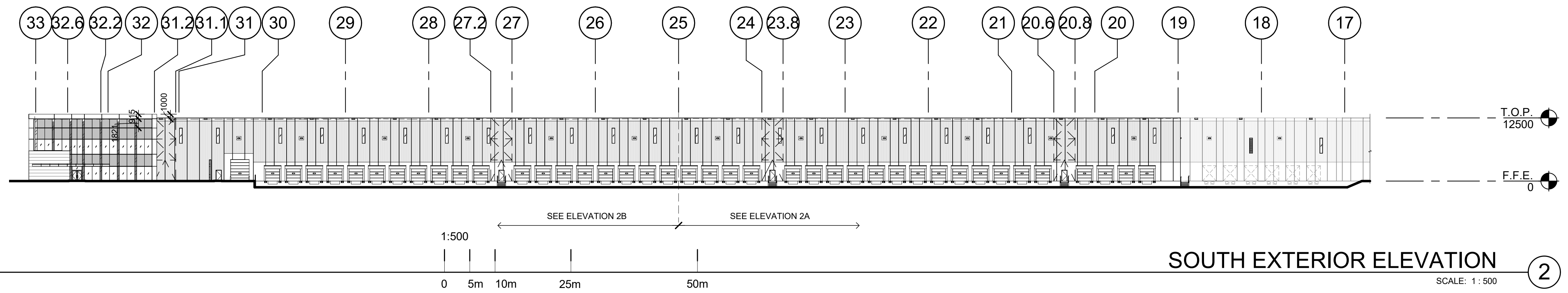
PA/PM: A. RAPALLO

DRAWN BY: O.T.

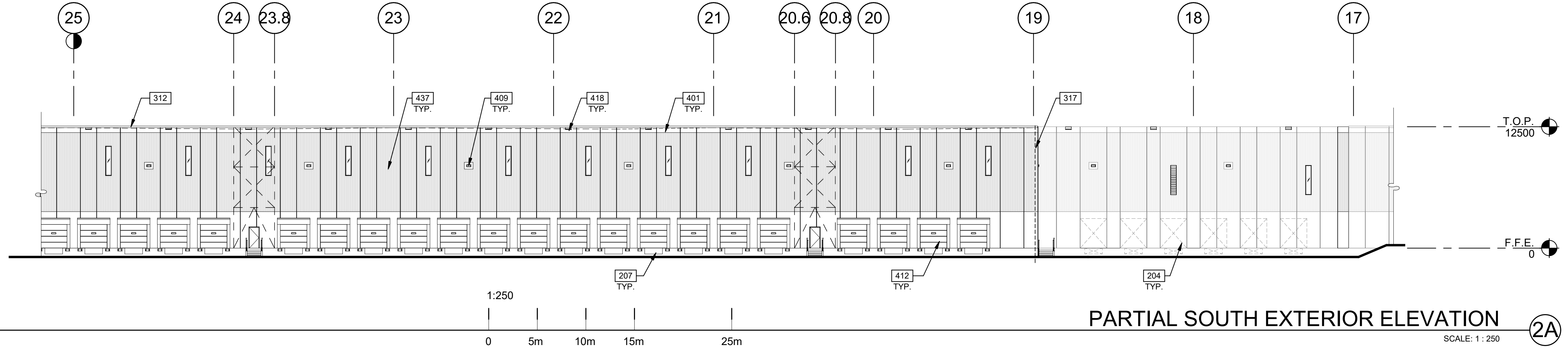
JOB NO.: TOR19-0092-00

SHEET

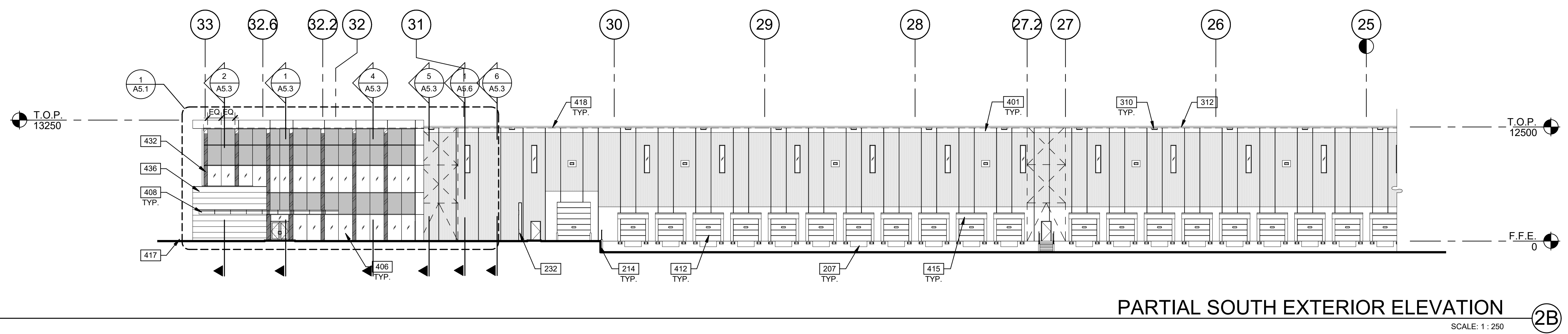
A4.1



SOUTH EXTERIOR ELEVATION (2)
SCALE: 1:500



PARTIAL SOUTH EXTERIOR ELEVATION (2A)
SCALE: 1:250



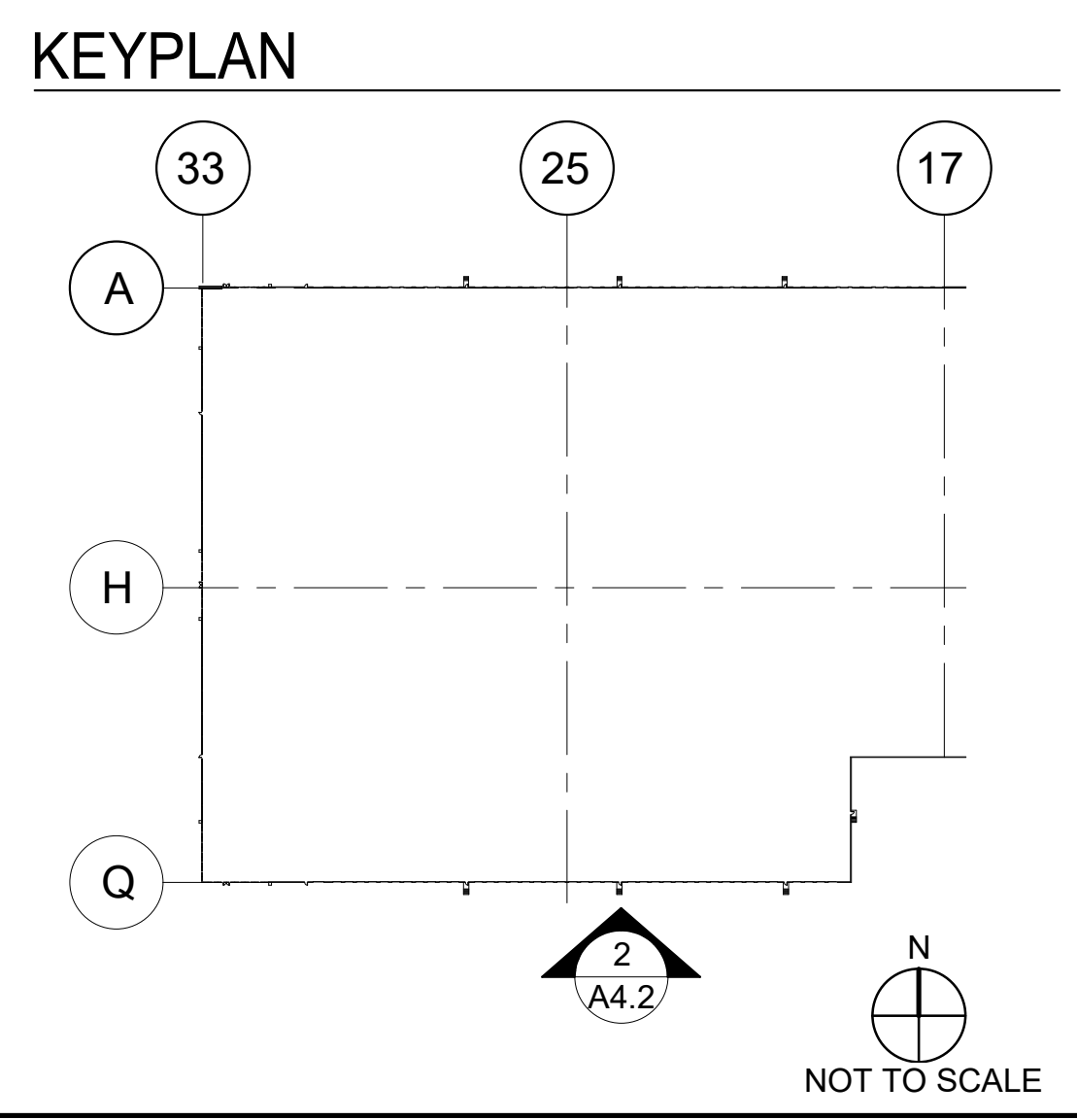
PARTIAL SOUTH EXTERIOR ELEVATION (2B)
SCALE: 1:250

LEGEND

GLASS:

- [Symbol] TINTED VISION GLASS - DARK GREY
- [Symbol] COLOUR 1 SPANDREL - LIGHT GREY
- [Symbol] SPANDREL GLASS
COLOUR 2 SPANDREL - DARK GREY
INSULATION UNITS WITH METAL BACKPAN AND OUTER SHEET
- [Symbol] LIGHT GREY COMPOSITE PANEL SYSTEM WITH OVERHANG, TYPICAL
- [Symbol] WOOD COMPOSITE MATERIAL
- [Symbol] SMOOTH PRECAST
- [Symbol] RIBBED PRECAST

- NOTES**
- SEE SHEET A0.2 FOR GENERAL NOTES
- 204 KNOCK-OUT PANEL FOR FUTURE WINDOWS OR DOORS.
 - 207 DOCK PIT.
 - 214 CONCRETE RETAINING WALL.
 - 232 SCREENWALL.
 - 310 ROOF SCUPPER.
 - 312 PREFINISHED METAL CAP FLASHING.
 - 317 EXPANSION JOINT. SEE STRUCTURAL DRAWINGS.
 - 401 WHITE CONCRETE FLEXWALL PRECAST SYSTEM 2400mm WIDE. TYPICAL.
 - 406 ALUMINUM CURTAIN WALL SYSTEM WITH 1" INSULATED GLASS.
 - 408 PREFINISHED ALUMINUM COMPOSITE PANEL CANOPY.
 - 409 WALL PACK, MOUNTED. WHITE TO MATCH EXISTING.
 - 412 2745W X 3050H TRUCK DOCK DOOR WITH 125X610 VISION LITE CENTERED ON DOOR.
 - 415 DOCK SHELTER.
 - 417 FINISH GRADE VARIES.
 - 418 LINE OF ROOF BEYOND.
 - 432 SPANDREL PANEL IN CURTAIN WALL GLAZING SYSTEM.
 - 436 PARKLEX PANEL SYSTEM. GC TO COORDINATE.
 - 437 LOUVER. SEE MECHANICAL DRAWINGS.



WARE MALCOMB
Leading Design for Commercial Real Estate

architecture
planning
interiors
graphics
civil engineering

180 Bess Peis Mills Dr #103
Vaughan, Ontario, Canada L4K 5W4
P: 905.740.1231
F: 905.248.3344

ONTARIO ASSOCIATION
OF
ARCHITECTS

FRANK DI ROMA
LICENCE
6758

ANATOLIA TILE & STONE
PH3 PILLSWORTH INDUSTRIAL

anatolia
CAPITAL CORP

100 PILLSWORTH ROAD
CALEDON, ONTARIO,
CANADA

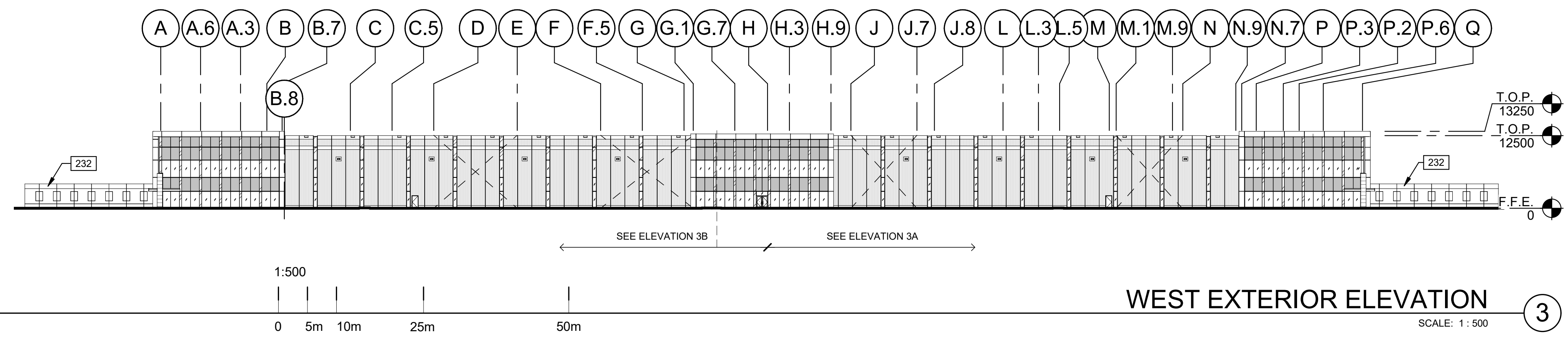
EXTERIOR ELEVATIONS

DATE	REMARKS
06/18/2020	ISSUED FOR CONDITIONAL PERMIT
06/25/2020	REISSUED FOR SPA
06/25/2020	REVISION TO PTA #1
07/21/2020	ISSUED FOR CONSTRUCTION PERMIT
11/16/2020	ISSUED FOR CONSTRUCTION PERMIT
12/23/2020	REISSUED FOR SPA

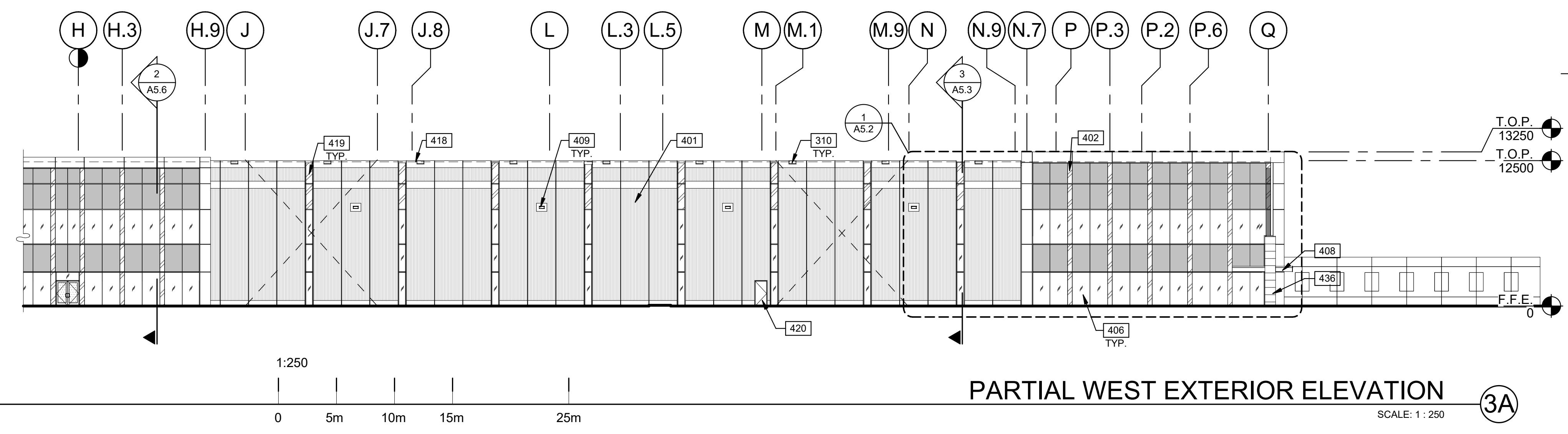
PA/PM:	A. RAPALLO
DRAWN BY.:	O.T.
JOB NO.:	TOR19-0092-00

SHEET

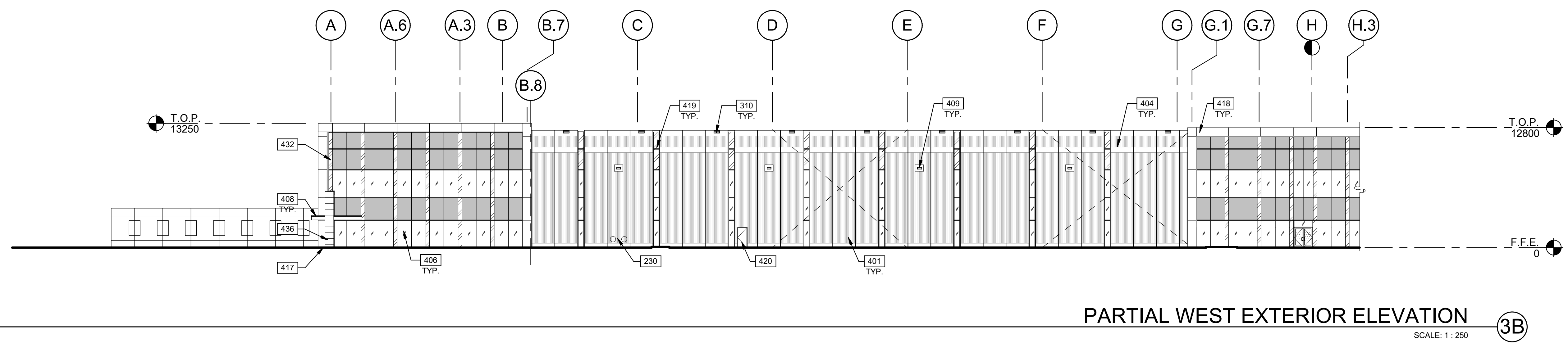
A4.2



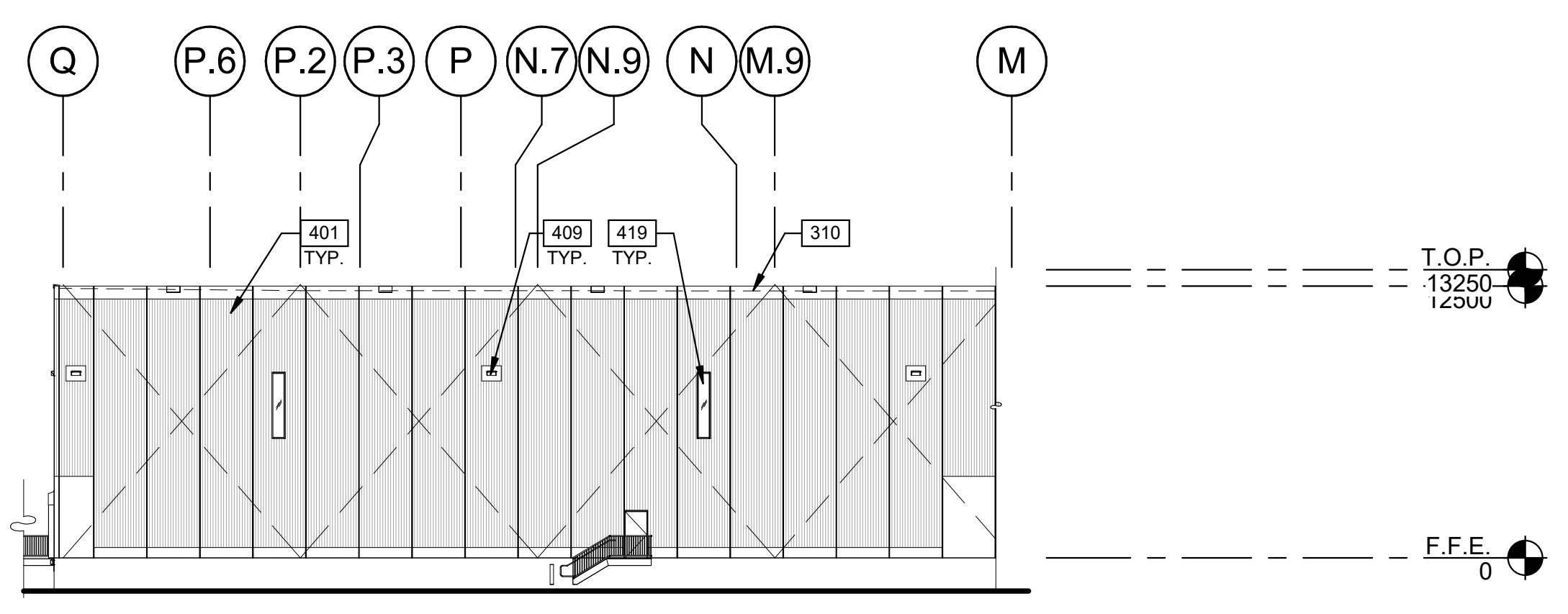
WEST EXTERIOR ELEVATION ③
SCALE: 1 : 500



PARTIAL WEST EXTERIOR ELEVATION ③A
SCALE: 1 : 250



PARTIAL WEST EXTERIOR ELEVATION ③B
SCALE: 1 : 250

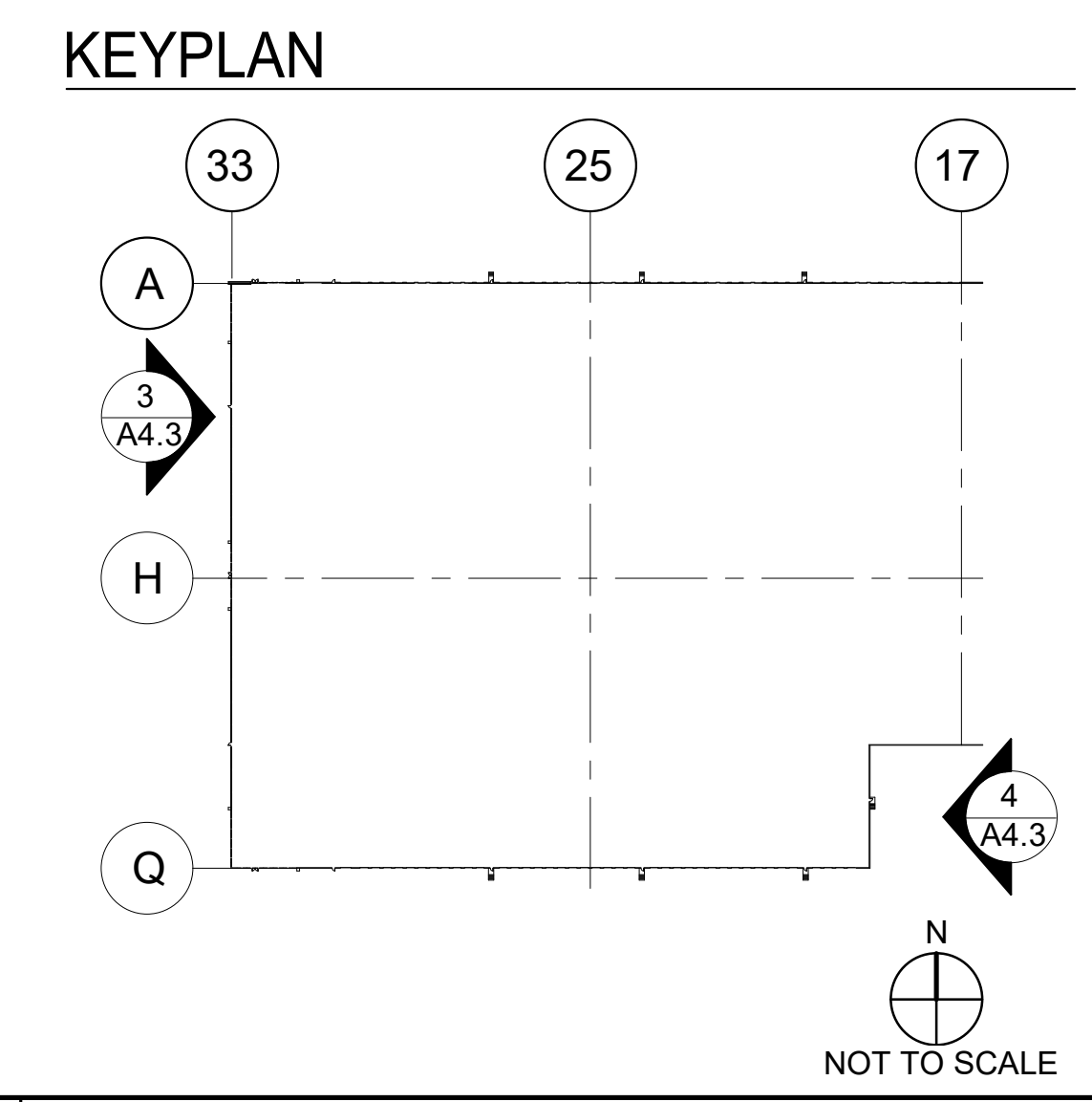


EAST EXTERIOR ELEVATION ④
SCALE: 1 : 250

LEGEND

GLASS:	
	TINTED VISION GLASS - DARK GREY
	COLOUR 1 SPANDREL - LIGHT GREY
	SPANDREL GLASS COLOUR 2 SPANDREL - DARK GREY INSULATION UNITS WITH METAL BACKPAN AND OUTER SHEET
	LIGHT GREY COMPOSITE PANEL SYSTEM WITH OVERHANG, TYPICAL
	WOOD COMPOSITE MATERIAL
	SMOOTH PRECAST
	RIBBED PRECAST

- NOTES**
- SEE SHEET A0.2 FOR GENERAL NOTES
- 230 SIAMESE CONNECTION.
 - 232 SCREENWALL.
 - 310 ROOF SCUPPER.
 - 401 WHITE CONCRETE FLEXWALL PRECAST SYSTEM 2400mm WIDE. TYPICAL.
 - 402 ALUMINUM COMPOSITE PANEL FASCIA AND METAL SOFFIT.
 - 404 3/4" V-REVEAL.
 - 406 ALUMINUM CURTAIN WALL SYSTEM WITH 1" INSULATED GLASS.
 - 408 PREFINISHED ALUMINUM COMPOSITE PANEL CANOPY.
 - 409 WALL PACK, MOUNTED, WHITE TO MATCH EXISTING.
 - 417 FINISH GRADE VARIES.
 - 418 LINE OF ROOF BEYOND.
 - 419 610mm X 3048mm CLERESTORY WINDOW.
 - 420 HOLLOW METAL MAN DOOR, PAINTED.
 - 422 ALUMINUM STOREFRONT PAIR DOOR.
 - 432 SPANDREL PANEL IN CURTAIN WALL GLAZING SYSTEM.
 - 436 PARKLEX PANEL SYSTEM. GC TO COORDINATE.



WARE MALCOMB
Leading Design for Commercial Real Estate

architecture
planning
interiors
graphics
civil engineering

180 Bass Pro Mills Dr #103
Vaughan, Ontario, Canada L4K 5W4
P: 905.740.1221
F: 905.248.3344

ONTARIO ASSOCIATION
OF
ARCHITECTS

FRANK DI ROMA
LICENCE
6758

ANATOLIA TILE & STONE
PH3 PILLSWORTH INDUSTRIAL

anatolia
CAPITAL CORP

100 PILLSWORTH ROAD
CALEDON, ONTARIO,
CANADA

EXTERIOR ELEVATIONS

DATE	REMARKS
06/18/2020	ISSUED FOR PERMIT
06/25/2020	REISSUED FOR SPA
07/21/2020	ISSUED FOR CONSTRUCTION
11/16/2020	ISSUED FOR PERMIT
12/23/2020	REISSUED FOR SPA

PA/PM: A. RAPALLO
DRAWN BY: O.T.
JOB NO.: TOR19-0092-00

SHEET
A4.3