

Amelia, *Glazed Porcelain*.  
Merchandising



anatolia

# Marketing support, *A&D Board*

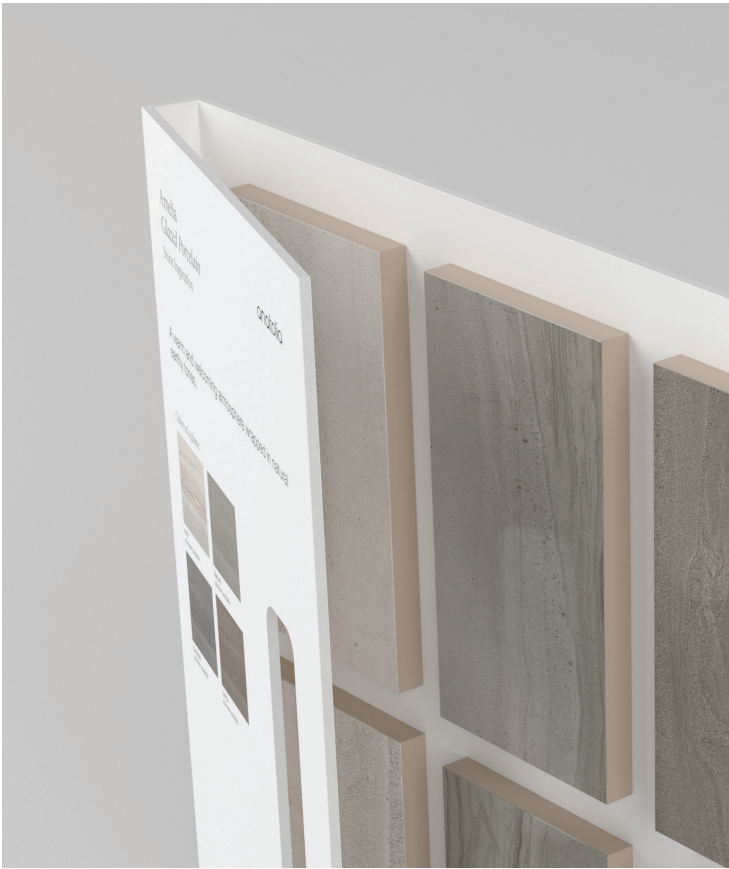
Today's A&D community and dealer network has very limited space in their design libraries and customer showrooms. Therefore, Anatolia wanted to reinvent the typical contractor board and architectural binder by combining them into one multipurpose and space efficient merchandising tool.

Once opened up the board acts like a traditional contractor board with an easy to hold handle with all the information needed to make design decisions. On the front are sizes and finishes at a glance along with color chips and room renders. On the back are all of the critical technical specifications needed to specify a design space along with room scenes for inspiration.

This unique to Anatolia A&D board sits on shelf folded with a book like spine that clearly identifies the collection name, material type and corresponding inspiration for the collection. When pulled out slightly, one can easily see the collection's colors at a glance.



A&D Board Outside



A&D Board Inside

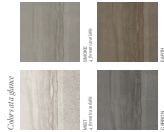
<i>A&amp;D Board</i>	ITEM DESCRIPTION	ITEM CODE	UPC
A&D Board for Colors Carbon, Earth, Mist, Smoke	Amelia A&D Board	9902-1319-0	828492068373

12 in / 30.5 cm

anatoila

Amelia  
Glazed Porcelain  
Stone Inspiration

A warm and welcoming atmosphere wrapped in natural earthy tones.



anatoila

Amelia

Glazed Porcelain

Stone Inspiration



Amelia, Glazed Porcelain.  
Engaging layers of stone.  
A warm and welcoming atmosphere wrapped in natural earthy tones.



16 x 32 in / 40 x 80 cm Amelia Matte Matte Rectified Glazed Porcelain Tile

Technical Information			
WATER ABSORPTION	ANSI 105 - IV	< 0.5%	
ABRASION RESISTANCE	ANSI 103	CLASS 4	
SCRATCH RESISTANCE	ANSI 103 - DMM	6	7
STAIN RESISTANCE	ANSI 105	< 100	
SLIP RESISTANCE	ANSI 103	CLASS 1	
FLAME RESISTANCE	ANSI 103	CLASS 1	
FREEZE RESISTANCE	ANSI 103	ANSI	

For more information on ANSI 103-105, please visit <https://www.ansi.org/standards>. For more information on ANSI 103-105, please visit <https://www.ansi.org/standards>.

Usage Recommendations			
APPLICATION	RES	RES	RES
WALLS	+	+	+
FLOORS	+	+	+
OUTDOOR	+	+	+
INDUSTRIAL	+	+	+

\* These are general recommendations for suitable applications. They are not intended to be used for any other purpose.

Product Packaging Information											
ITEM	QUANTITY	WEIGHT	LENGTH	WIDTH	THICKNESS	AREA	VOLUME	AREA	VOLUME	AREA	VOLUME
16 x 32 in / 40 x 80 cm	10	10.00	40.00	80.00	0.39	3200.00	1568.00	1600.00	640.00	1600.00	640.00
16 x 32 in / 40 x 80 cm	10	10.00	40.00	80.00	0.39	3200.00	1568.00	1600.00	640.00	1600.00	640.00
16 x 32 in / 40 x 80 cm	10	10.00	40.00	80.00	0.39	3200.00	1568.00	1600.00	640.00	1600.00	640.00
16 x 32 in / 40 x 80 cm	10	10.00	40.00	80.00	0.39	3200.00	1568.00	1600.00	640.00	1600.00	640.00
16 x 32 in / 40 x 80 cm	10	10.00	40.00	80.00	0.39	3200.00	1568.00	1600.00	640.00	1600.00	640.00
16 x 32 in / 40 x 80 cm	10	10.00	40.00	80.00	0.39	3200.00	1568.00	1600.00	640.00	1600.00	640.00
16 x 32 in / 40 x 80 cm	10	10.00	40.00	80.00	0.39	3200.00	1568.00	1600.00	640.00	1600.00	640.00
16 x 32 in / 40 x 80 cm	10	10.00	40.00	80.00	0.39	3200.00	1568.00	1600.00	640.00	1600.00	640.00
16 x 32 in / 40 x 80 cm	10	10.00	40.00	80.00	0.39	3200.00	1568.00	1600.00	640.00	1600.00	640.00
16 x 32 in / 40 x 80 cm	10	10.00	40.00	80.00	0.39	3200.00	1568.00	1600.00	640.00	1600.00	640.00
16 x 32 in / 40 x 80 cm	10	10.00	40.00	80.00	0.39	3200.00	1568.00	1600.00	640.00	1600.00	640.00

anatoilattile.com

info@anatoilattile.com

© 2023 Anatolia Tile. All rights reserved.

Anatolia Tile is a registered trademark of Anatolia Tile Co. All other trademarks are the property of their respective owners.

Residential Warranty: 5 Years Commercial Warranty: 1 Year

Board 1 of 1

tdc

ITM+ACTIVE

CE

CE

CE

CE

0.7 in  
1.8 cm

Amelia  
Glazed Porcelain  
Stone Inspiration

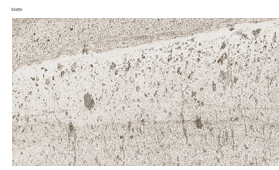
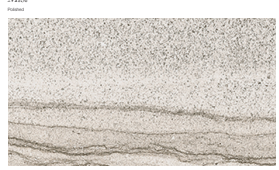
anatoila



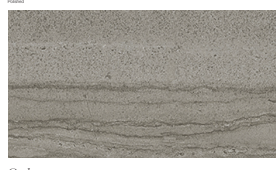
Formats at a Glance



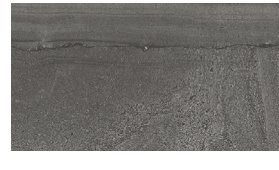
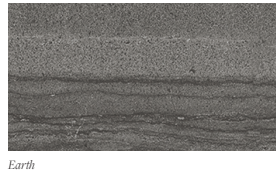
Mist



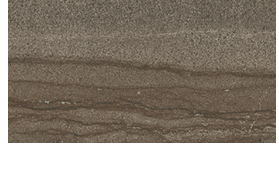
Smoke



Carbon



Earth



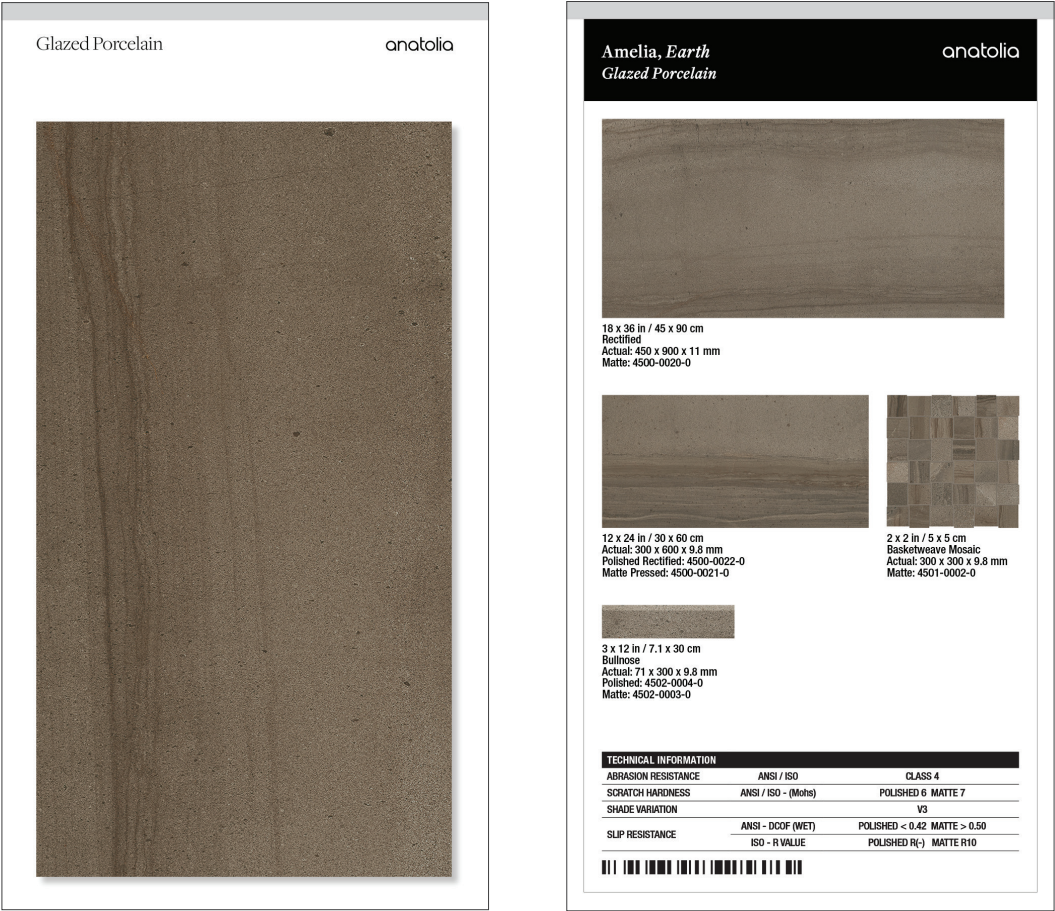
A&D Board Outside

A&D Board Inside

# Marketing support, *Sample Chips*

Sample chips are an essential tool to bring mood boards to life and inspire a cohesive design space. They need to be relatively small and yet contain all of the critical design and collection specifications needed.

Anatolia has created a sample chip program that categorizes sample chips into color coded material types, includes a sample chip affixed to an elegant backer card and includes all of the key technical information and formats for that color on its back label. Anatolia also developed a premium sample chip carrying case to easily and beautifully store, organize, and carry sample chips to meetings.



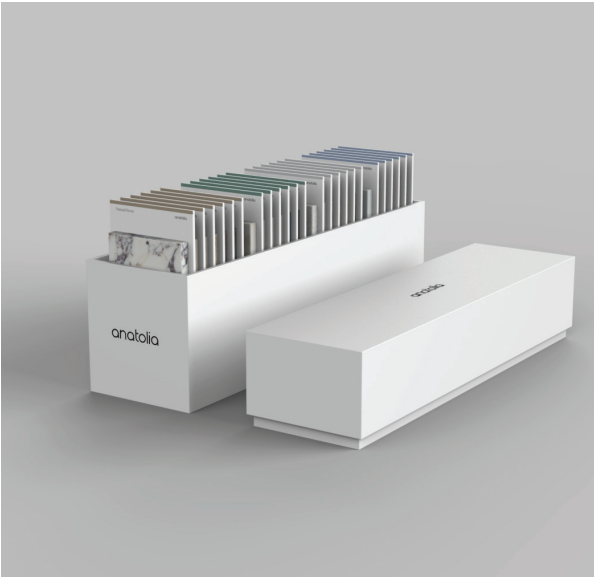
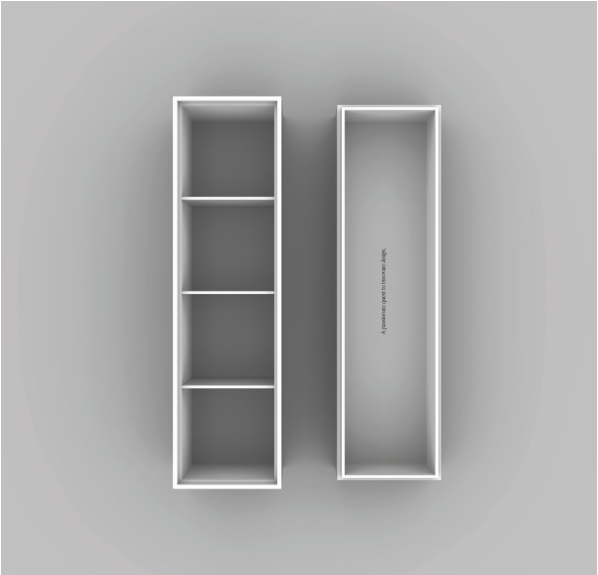
Backer Board Size: 3.25 x 6 in / 8.25 x 15.25 cm

<i>Sample Chips</i>	ITEM CODE	UPC
Amelia Carbon Matte Sample Chip	9902-1225-0	828492066225
Amelia Earth Matte Sample Chip	9902-1227-0	828492066249
Amelia Mist Matte Sample Chip	9902-1229-0	828492066263
Amelia Smoke Matte Sample Chip	9902-1231-0	828492066287

<i>Sample Chips</i>	ITEM CODE	UPC
Amelia Carbon Polished Sample Chip	9902-1226-0	828492066232
Amelia Earth Polished Sample Chip	9902-1228-0	828492066256
Amelia Mist Polished Sample Chip	9902-1230-0	828492066270
Amelia Smoke Polished Sample Chip	9902-1232-0	828492066294

# Marketing support, *Sample Chip Carrying Case*

Anatolia has developed a premium sample chip carrying case to easily and beautifully store, organize, and carry sample chips to meetings and for sample libraries. The case comes empty and can hold up to 24 sample chips.



ITEM DESCRIPTION	CONTENTS	ITEM CODE	UPC
4.1 x 14.8 x 7.5 in / 37.6 x 10.4 x 17.9 cm Sample Chip Carrying Case (Empty)	As per above	9902-1659-0	828492074879

*Discover more at*  
anatolia.com