

Belgian Linen, *Color Body Porcelain*.

The culmination of intricately woven linen with the resilience of enduring porcelain.



anatolia

Belgian Linen, *Color Body Porcelain*.

Exquisite patterns providing
a delicate textured look.

Colors at a glance

Light and warm colors from a muted palette of earthy tones. Creamy-whites, soft beiges and warm greys.



Ivory



Natural



Fog



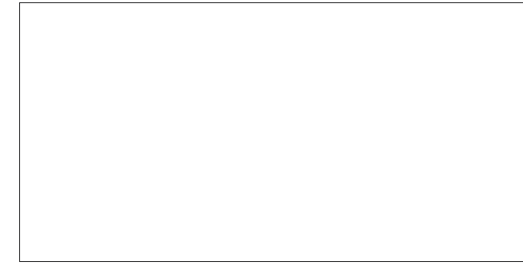
Mist



Mica

Formats and finishes at a glance

A mix of two primary tile sizes and a range of reciprocal mosaics formats, including a selection of popular random strip, stacked and basketweave mosaics.



12 x 24 in / 30 x 60 cm
Rectified
Matte



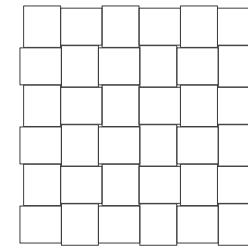
6 x 24 in / 15 x 60 cm
Rectified
Matte

Trim



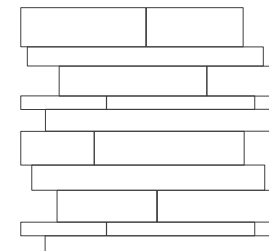
3 x 12 in / 7.1 x 30 cm
Bullnose
Matte

Mosaic

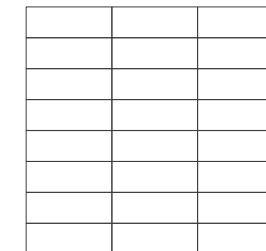


2 x 2 in / 5 x 5 cm
Basketweave Mosaics
Matte

Specialty Mosaics



Random Strip
Mosaics
Light Blend / Dark Blend
Matte



1 x 4 in / 3.8 x 10 cm
Stacked Mosaics
Light Blend / Dark Blend
Matte



12 x 24 in / 30 x 60 cm Belgian Linen Fog Matte Rectified Color Body Porcelain Tile





12 x 24 / 30 x 60 cm Belgian Linen Natural Matte Rectified Color Body Porcelain Tile

Belgian Linen, *Ivory*



12 x 24 in / 30 x 60 cm
Rectified
Matte 4500-0075-1



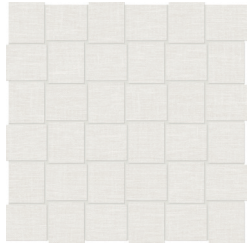
6 x 24 in / 15 x 60 cm
Rectified
Matte 4500-0074-1

Trim

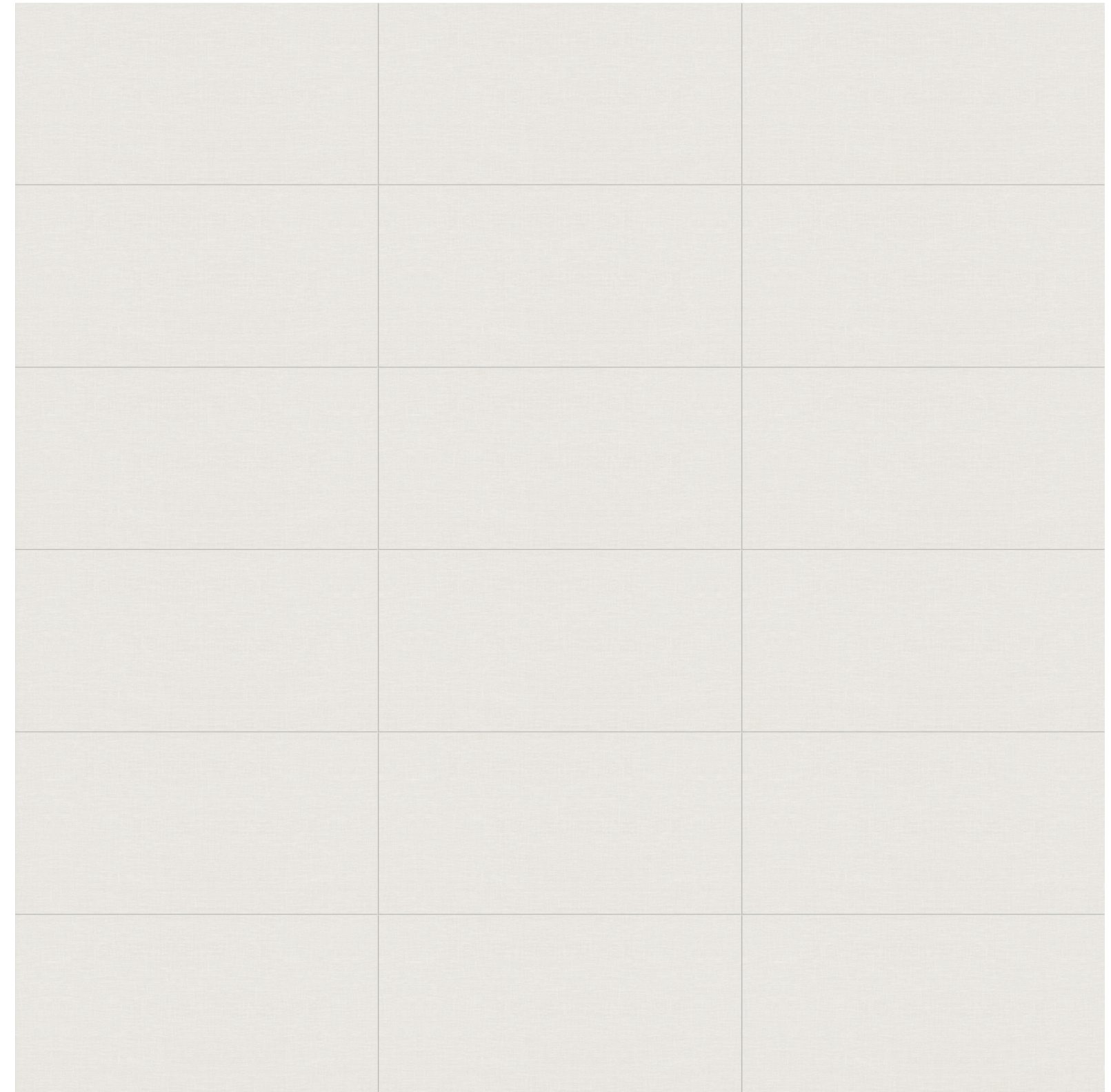


3 x 12 in / 7.1 x 30 cm
Bullnose
Matte 4502-0016-1

Mosaic



2 x 2 in / 5 x 5 cm
Basketweave Mosaic
Matte 4501-0029-1



12 x 24 in / 30 x 60 cm image variations

Belgian Linen, *Natural*



12 x 24 in / 30 x 60 cm
Rectified
Matte 4500-0087-1



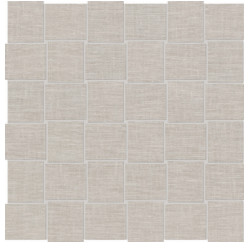
6 x 24 in / 15 x 60 cm
Rectified
Matte 4500-0085-1

Trim

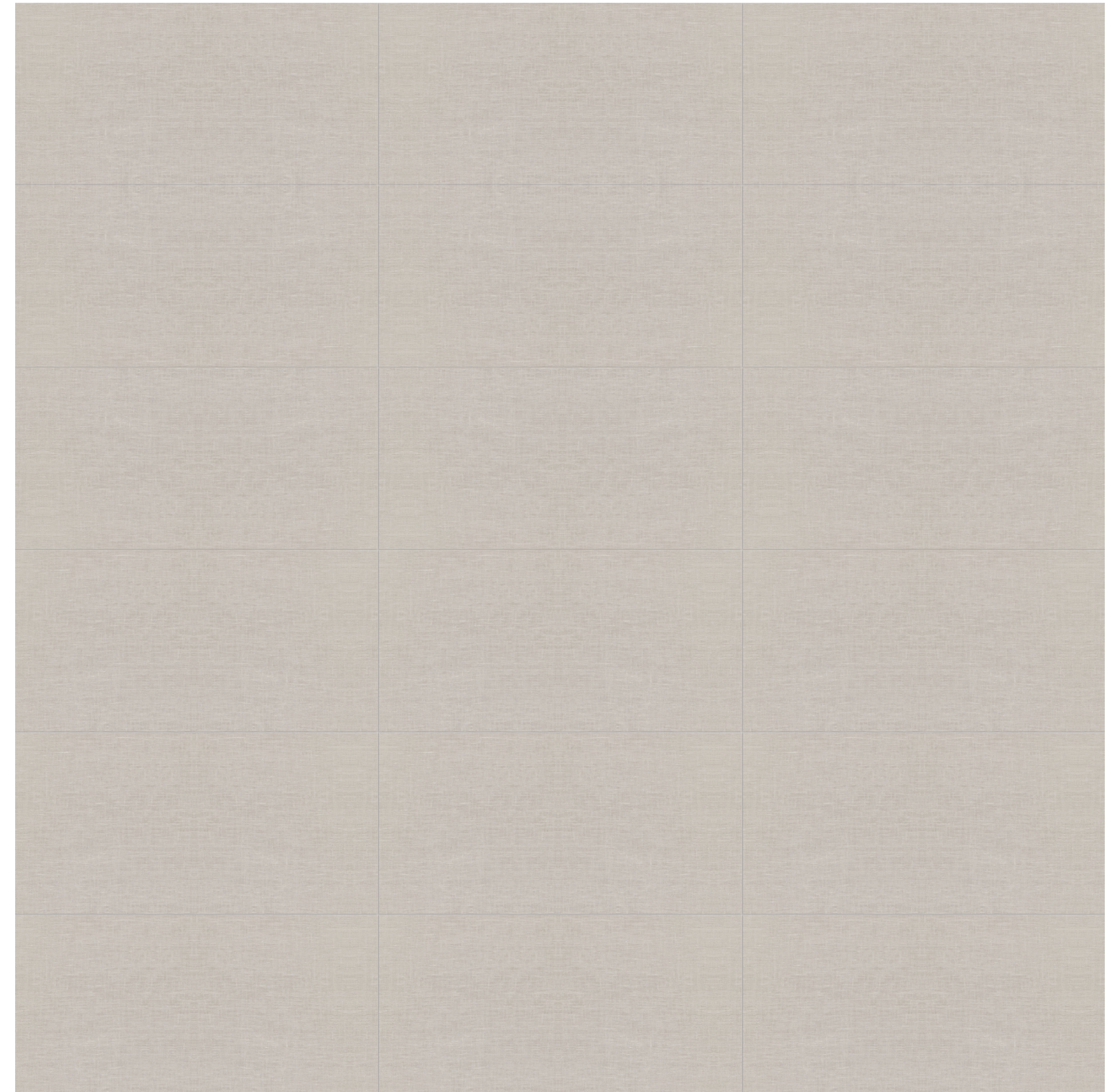


3 x 12 in / 7.1 x 30 cm
Bullnose
Matte 4502-0021-1

Mosaic



2 x 2 in / 5 x 5 cm
Basketweave Mosaic
Matte 4501-0033-1



12 x 24 in / 30 x 60 cm image variations

Belgian Linen, *Fog*



12 x 24 in / 30 x 60 cm
Rectified
Matte 4500-0072-1



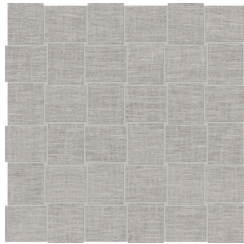
6 x 24 in / 15 x 60 cm
Rectified
Matte 4500-0071-1

Trim

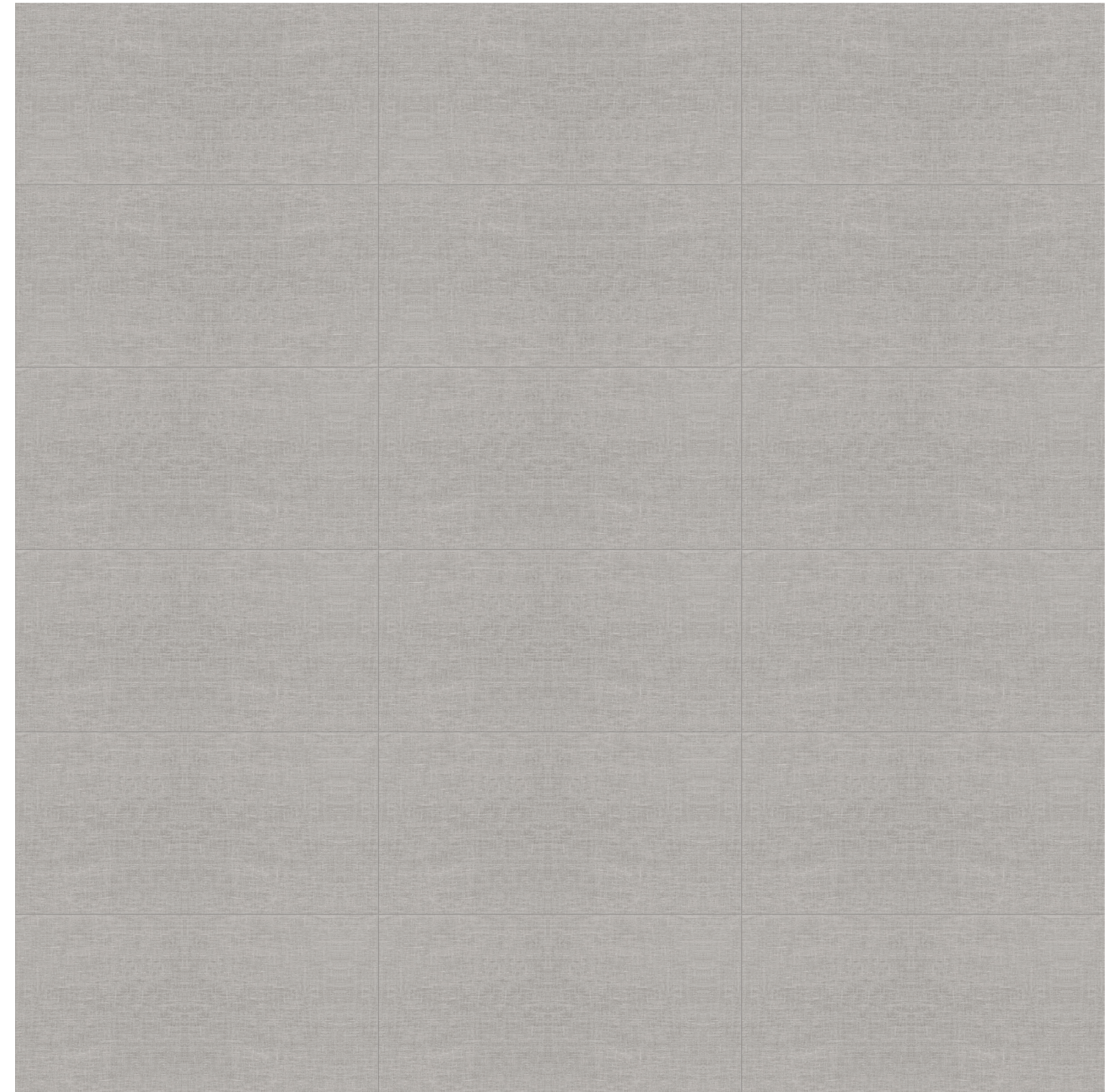


3 x 12 in / 7.1 x 30 cm
Bullnose
Matte 4502-0014-1

Mosaic



2 x 2 in / 5 x 5 cm
Basketweave Mosaic
Matte 4501-0028-1



12 x 24 in / 30 x 60 cm image variations

Belgian Linen, *Mist*



12 x 24 in / 30 x 60 cm
Rectified
Matte 4500-0083-1



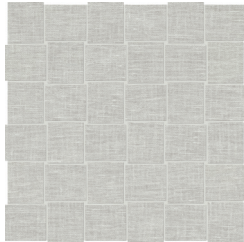
6 x 24 in / 15 x 60 cm
Rectified
Matte 4500-0082-1

Trim

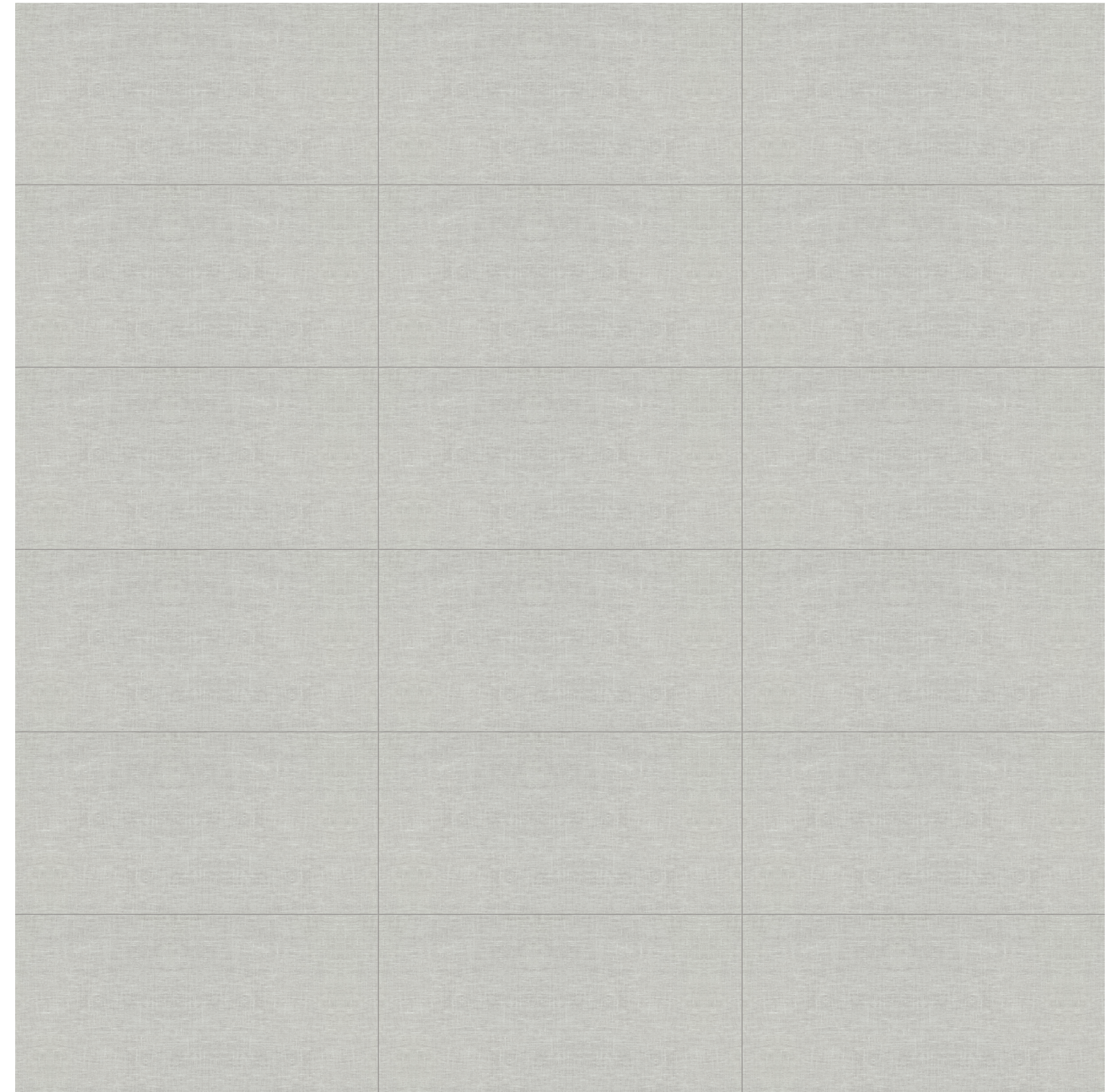


3 x 12 in / 7.1 x 30 cm
Bullnose
Matte 4502-0020-1

Mosaic

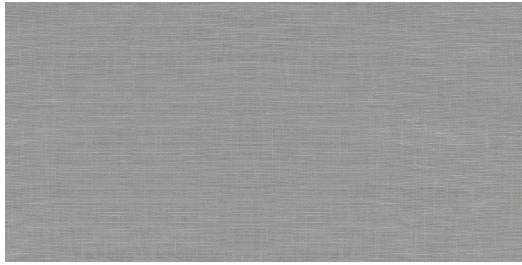


2 x 2 in / 5 x 5 cm
Basketweave Mosaic
Matte 4501-0032-1



12 x 24 in / 30 x 60 cm image variations

Belgian Linen, *Mica*



12 x 24 in / 30 x 60 cm
Rectified
Matte 4500-0079-1



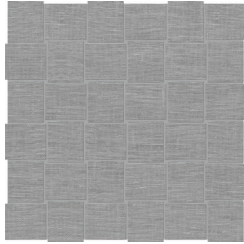
6 x 24 in / 15 x 60 cm
Rectified
Matte 4500-0078-1

Trim

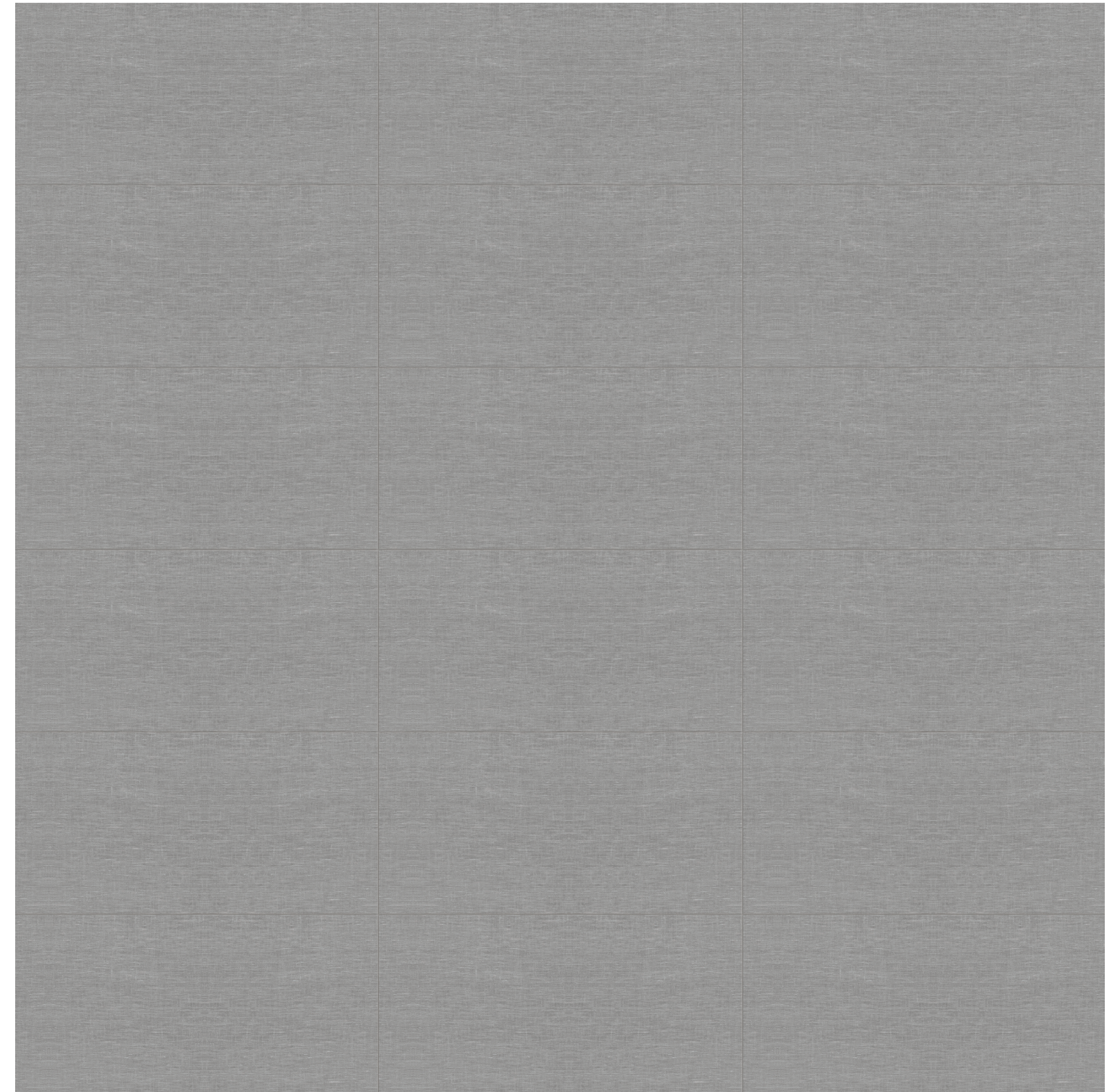


3 x 12 in / 7.1 x 30 cm
Bullnose
Matte 4502-0018-1

Mosaic



2 x 2 in / 5 x 5 cm
Basketweave Mosaic
Matte 4501-0031-1



12 x 24 in / 30 x 60 cm image variations

Belgian Linen, *Blend Mosaics*



1 x 4 in / 3.8 x 10 cm
Stacked Mosaic
Light Blend
Matte 4501-0030-1



1 x 4 in / 3.8 x 10 cm
Stacked Mosaic
Dark Blend
Matte 4501-0027-1



Random Strip
Mosaic
Light Blend
Matte 4501-0037-1



Random Strip
Mosaic
Dark Blend
Matte 4501-0035-1



On the Floor: 12 x 24 / 30 x 60 cm Belgian Linen Ivory Matte Rectified Color Body Porcelain Tile
On the Wall: 2 x 2 in / 5 x 5 cm Belgian Linen Ivory Basketweave Matte Color Body Porcelain Mosaic



On the floor: 12 x 24 / 30 x 60 cm Belgian Linen Ivory Matte Rectified Color Body Porcelain Tile
On the wall: 2 x 2 in / 5 x 5 cm Belgian Linen Ivory Basketweave Matte Color Body Porcelain Mosaic

The Anatolia difference
Unmatched elegance and unparalleled perfection.

Anatolia reinvents shapes and design compositions through refined color palettes, innovative graphical refinements and creative reinterpretations of traditional, cultural and trend led inspirations. Meticulous care is taken to enhance a product's formation through graphical and technical improvements at every step of the development and execution process. This leads to the most exquisite and discerning tile collections.





Technical Performance
Avant-garde design and attention to detail.

The goal of Anatolia's design department was to create the utmost elegant and sophisticated product, a perfect blend of functionality and style. New technical aspects, innovative shapes, and a new color palette were designed to represent the vibrant and lively nature of metropolitan city life, inspired by its culture and history.

Packaging information

Key logistical details including item codes and product specifications.










Belgian Linen Product & Packaging Information

	ACTUAL DIMENSIONS	THICKNESS	FOG ITEM CODE	IVORY ITEM CODE	MICA ITEM CODE	MIST ITEM CODE	NATURAL ITEM CODE	DARK BLEND ITEM CODE	LIGHT BLEND ITEM CODE	LBS BOX	KGS BOX	PCS BOX	SOFT BOX	M ² BOX	BIS SKID	SOFT SKID	M ² SKID
6 x 24 in / 15 x 60 cm MATTE RECTIFIED COLOR BODY PORCELAIN TILE	150 x 600 mm	9 mm	4500-0071-1	4500-0074-1	4500-0078-1	4500-0082-1	4500-0085-1	N/A	N/A	47.5	21.55	12	11.63	1.08	40	465.2	43.2
12 x 24 in / 30 x 60 cm MATTE RECTIFIED COLOR BODY PORCELAIN TILE	300 x 600 mm	9 mm	4500-0072-1	4500-0075-1	4500-0079-1	4500-0083-1	4500-0087-1	N/A	N/A	64.37	29.2	8	15.5	1.44	32	496	46.08
MOSAICS																	
2 x 2 in / 5 x 5 cm BASKETWEAVE MATTE COLOR BODY PORCELAIN MOSAIC	298 x 298 mm	9 mm	4501-0028-1	4501-0029-1	4501-0031-1	4501-0032-1	4501-0033-1	N/A	N/A	40.12	18.2	10	9.58	0.89	45	431.1	40.05
1 x 4 in / 2.5 x 10 cm STACKED MATTE COLOR BODY PORCELAIN MOSAIC	298 x 298 mm	9 mm	N/A	N/A	N/A	N/A	N/A	4501-0027-1	4501-0030-1	40.12	18.2	10	9.58	0.89	45	431.1	40.05
RANDOM STRIP MATTE COLOR BODY PORCELAIN MOSAIC	298 x 298 mm	9 mm	N/A	N/A	N/A	N/A	N/A	4501-0035-1	4501-0037-1	40.12	18.2	10	9.58	0.89	45	431.1	40.05
TRIM																	
3 x 12 in / 7.1 x 29.8 cm MATTE COLOR BODY PORCELAIN BULLNOSE	70.5 x 298 mm	9 mm	4502-0014-1	4502-0016-1	4502-0018-1	4502-0020-1	4502-0021-1	N/A	N/A	22.12	10.03	20	N/A	N/A	84	1680 PCS	1680 PCS

Technical information

Tile collection performance based on industry standards.

Technical Information

	WATER ABSORPTION	ANSI / ISO - (%)	< 0.5%
	ABRASION RESISTANCE	ANSI / ISO	CLASS 4
	SCRATCH HARDNESS	ANSI / ISO - (Mohs)	7
	BREAKING STRENGTH	ANSI - (lbf) ISO - (N)	>350 >1500
	SHADE VARIATION		V1
	SLIP RESISTANCE	ANSI - DCOF (WET) ISO - R VALUE	MATTE ≥0.50 (ID, IW, IW+) MATTE R9
	CHEMICAL RESISTANCE	ANSI / ISO	CLASS A
	STAIN RESISTANCE	ANSI ISO	CLASS A CLASS 5
	FROST RESISTANCE	ANSI / ISO	PASS

Test values are based on ANSI / ISO standards according to: ANSI A137.1 - Porcelain tile P1 Class, ISO 13006 - G - Bia Group, En 14411 - G - Bia Group. Variances in test values can occur in different production lots.

Usage recommendations

Anatolia's recommendations for suitable applications.

Usage Recommendations*		MATTE COLOR BODY PORCELAIN	
APPLICATION		WALL	FLOOR
INTERIOR	RESIDENTIAL	•	ID, IW, IW+
	COMMERCIAL	•	ID, IW, IW+
	HEAVY COMMERCIAL	•	
EXTERIOR	RESIDENTIAL / COMMERCIAL	•	

* These recommendations are not defined by ANSI/ISO standards.

DCOF Classifications per ANSI A326.3: (ID): Interior, Dry (IW): Interior, Wet (IW+): Interior, Wet Plus (EW): Exterior, Wet (O/G): Oils/Greases

* Factors other than the noted DCOF result must also be taken into consideration. Such factors include, but are not limited to, expected contaminants, drainage, surface texture, effect of structure on the DCOF measurement, number of grout joints, traction-enhancing features, and intended use in addition to the other criteria noted in standard ANSI A326.3

The World of Anatolia

We are a constellation of people and places. Get in touch.

CANADA
TORONTO HEAD OFFICE,
SHOWROOM AND DISTRIBUTION
CENTER

8300 Huntington Road
Vaughan, ON, L4H 4Z6
Canada

TORONTO SINTERED
SLABS DISTRIBUTION CENTER

700 Anatolian Drive
Vaughan, ON L4H 5H7
Canada

info@anatolia.com

Tel: +1 905 771 3800
Toll free tel: 1 877 311 3434
Fax: +1 905 771 6300
Fax: +1 866 324 1838

USA
SAVANNAH OFFICE, SHOWROOM
AND DISTRIBUTION CENTERS
Anatolia (USA) Inc.
Tel: +1 877 311 3434

SAVANNAH WAREHOUSE #1
202 International Trade Pkwy
Port Wentworth, GA, 31407
USA
Tel: +1 912 438 5167

SAVANNAH WAREHOUSE #2
250 International Trade Pkwy
Port Wentworth, GA, 31407
USA
Tel: +1 912 438 5167

TURKIYE
İZMİR OFFICE, SHOWROOM,
DISTRIBUTION CENTER, AND
MANUFACTURING FACILITY

Aliağa Organize Sanayi Bölgesi
Çoraklar Mah. 5000 Sk. No: 25
35800 Aliağa, İzmir,
Türkiye
Tel: +90 232 520 7300

REGIONAL OFFICES
CHINA
Room 517 Yi Shu Da Lou Ji Hua 4 Road
Chan Cheng District, Foshan City
Guang Dong Province, 528000
China

INDIA
206 - Pacific Business Park
Mahendra Nagar (Part)
8/A - National High Way
Morbi, Gujarat, 363642
India

USA
Anatolia (USA) Inc.
131 Crosslake Park Dr., Suite 202
 Mooresville, NC, 28117
USA
Tel: +1 877 311 3434

Credits

ART DIRECTION
AND GRAPHIC DESIGN
Juma

Partnerships and Associations



Discover more at
anatolia.com

