

Cabana, *Pebble Mosaics*.  
Merchandising



# Marketing support, *Table Top Display*

This collection's beauty is brought to life in a table top display that features the mosaics in the collection in compact and efficient display board sets. The display board sets feature each mosaic formats on the front of the board along with refined room scenes, variations and technical specifications on the back. Furthermore, great care has been taken to maximize display space efficiency while providing the most motivating presentation of the collection. Featuring top-positioned holes, these boards seamlessly transform into elegant library boards, compatible with Anatolia's Natural Stone Library Display.



*Cabana, Table Top Display at a glance*



Side angle view of display boards accentuates the beauty and impeccable quality of the designs.



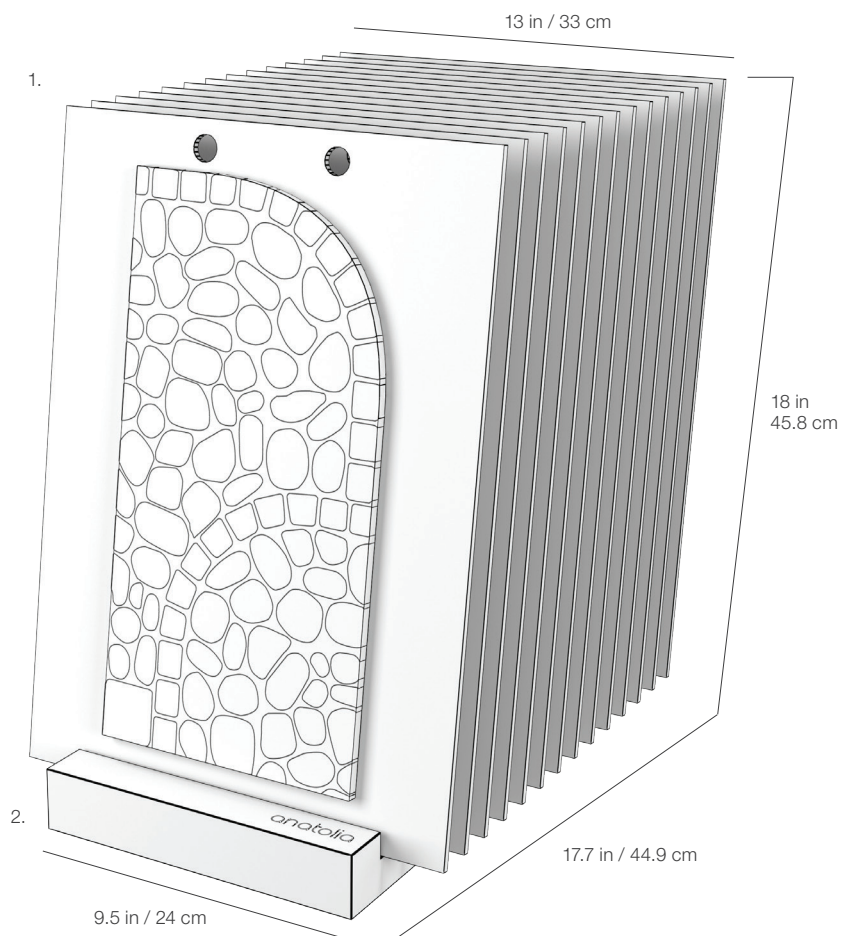
# Cabana, Table Top Display Kit

## Key specifications and item codes

ITEM DESCRIPTION	CONTENTS	ITEM CODE	UPC
CABANA DISPLAY BOARD KIT	3 DISPLAY BOARD SETS (14 BOARDS IN TOTAL), 1 DISPLAY BASE	9901-0082-0	828492086698

1. 13 x 18 in / 33 x 45.8 cm Display Boards (14 in total)

2. 17.7 x 9.5 in MDF Display Base, 14 Slots



# Marketing support, *Display Boards*

Anatolia has designed a premium, compact and efficient display board that allows for it to be easily picked up and moved around for design discussions with clients. The front of the board displays one of four design formats available in each of the four color combinations.

The back of the board features elegant and refined rooms scenes specific to the featured mosaic design for inspiration. Technical specifications include mosaic sizes, finish available, packaging details and highlight a sample of mosaic variations.



13 x 18 in / 33 x 45.8 cm Cabana Panel, front



13 x 18 in / 33 x 45.8 cm Cabana Panel, back

<i>Display Board Sets</i>	ITEM DESCRIPTION	ITEM CODE	UPC
Cabana Display Board Set			
4 Display Boards: Flow Mosaics	PART 1	9902-2485-0	828492086650
5 Display Boards: Node, and Blend Mosaics	PART 2	9902-2486-0	828492086667
5 Display Boards: Axis, and Blend Mosaics	PART 3	9902-2487-0	828492086674

<i>Additional Components</i>	ITEM CODE	UPC
17.7 x 9.5 in MDF Display Base, 14 Slots	9902-2488-0	828492086681

## Marketing Support, *Designer Library Display*

This exquisite, modern design that is realized in Anatolia's innovative new Designer Library Display is an entirely customizable creation made to showcase our exclusive selection of collections. Housing up to 144 new, custom-curated display boards, the Designer Library Display achieves a premium aesthetic with LED lighting and a wood look finish, while simultaneously conveying essential product details covering the extensive variety of available collections. The Designer Library Display has custom display options that can be selected to house the boards.



# Marketing support, *A&D Boards*

Today's A&D community and dealer network has very limited space in their design libraries and customer showrooms. Therefore, Anatolia wanted to reinvent the typical contractor board and architectural binder by combining them into one multipurpose and space efficient merchandising tool.

Once opened up the board acts like a traditional contractor board with an easy to hold handle with all the information needed to make design decisions. On the front are sizes and finishes at a glance along with color chips and room renders. On the back are all of the critical technical specifications needed to specify a design space along with room scenes for inspiration.

This unique to Anatolia A&D board sits on shelf folded with a book like spine that clearly identifies the collection name, material type and corresponding inspiration for the collection. When pulled out slightly, one can easily see the collection's colors at a glance.



A&D Board Outside



A&D Board Inside

<i>A&amp;D Board</i>	ITEM DESCRIPTION	ITEM CODE	UPC
A&D Board for Colors Galaxy, River, Horizon, and Jade	Cabana A&D Board	9902-2003-0	828492081402

12 in / 30.5 cm

anatolia

Cabana  
Pebble Mosaics



anatolia

Timeless elegance meets modern artistry in this exquisite selection of pebble mosaic designs.

*Colors of Nature*



---

anatolia

Cabana

*Natural Stone*

Pebble Mosaics



Cabana Pebble Mosaic Natural Stone Series



**Cabana, Pebble Mosaics.**  
Timeless elegance meets modern artistry in the Cabana collection. The thoughtfully crafted array of pebble mosaics conveys a harmonious, organic ambience, inviting serenity, and a deep connection to the beauty of nature. While familiar in material and aesthetic appeal, this collection introduces a level of artistry that transcends the typical pebble mosaic. Whether you're drawn to the classic allure of traditional aesthetics or the sophistication of contemporary style, these mosaics promise to transform any space.

Product ID	GLAZED PEBBLE		NATURAL PEBBLE		MIXED PEBBLE		JADE PEBBLE		LUX PEBBLE		POLY PEBBLE		MIX PEBBLE		SPLIT PEBBLE		MIX PEBBLE	
	SIZE (mm)	THICKNESS (mm)	TABLED	TABLED	TABLED	TABLED	TABLED	TABLED	TABLED	TABLED	TABLED	TABLED	TABLED	TABLED	TABLED	TABLED	TABLED	TABLED
CABANA-1212-1212-1212-1212	1212x1212	12mm	1000-0448-0	1000-0449-0	1000-0450-0	1000-0451-0	1000-0452-0	1000-0453-0	1000-0454-0	1000-0455-0	1000-0456-0	1000-0457-0	1000-0458-0	1000-0459-0	1000-0460-0	1000-0461-0	1000-0462-0	1000-0463-0
CABANA-1212-1212-1212-1212	1212x1212	12mm	1000-0448-1	1000-0449-1	1000-0450-1	1000-0451-1	1000-0452-1	1000-0453-1	1000-0454-1	1000-0455-1	1000-0456-1	1000-0457-1	1000-0458-1	1000-0459-1	1000-0460-1	1000-0461-1	1000-0462-1	1000-0463-1
CABANA-1212-1212-1212-1212	1212x1212	12mm	1000-0448-2	1000-0449-2	1000-0450-2	1000-0451-2	1000-0452-2	1000-0453-2	1000-0454-2	1000-0455-2	1000-0456-2	1000-0457-2	1000-0458-2	1000-0459-2	1000-0460-2	1000-0461-2	1000-0462-2	1000-0463-2
CABANA-1212-1212-1212-1212	1212x1212	12mm	1000-0448-3	1000-0449-3	1000-0450-3	1000-0451-3	1000-0452-3	1000-0453-3	1000-0454-3	1000-0455-3	1000-0456-3	1000-0457-3	1000-0458-3	1000-0459-3	1000-0460-3	1000-0461-3	1000-0462-3	1000-0463-3

anatolia.com  
info@anatolia.com

© 2023 Anatolia. All Rights Reserved.

A&D Board Outside

0.7 in  
1.8 cm


Fully Open:  
21.45 in  
54.5 cm

Cabana  
Pebble Mosaics



anatolia

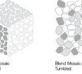
*Formats at a Glance*




Black Marble  
Pebble Mosaic



Light Marble  
Pebble Mosaic



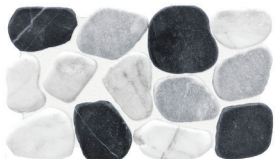
Dark Marble  
Pebble Mosaic



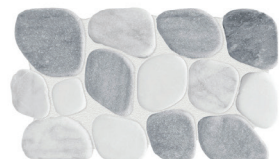
Mixed Marble  
Pebble Mosaic

---

*Galaxy*  
Turkish




*River*  
Turkish



*Horizon*  
Turkish



*Jade*  
Turkish





Cabana Pebble Mosaic Natural Stone Series

A&D Board Inside



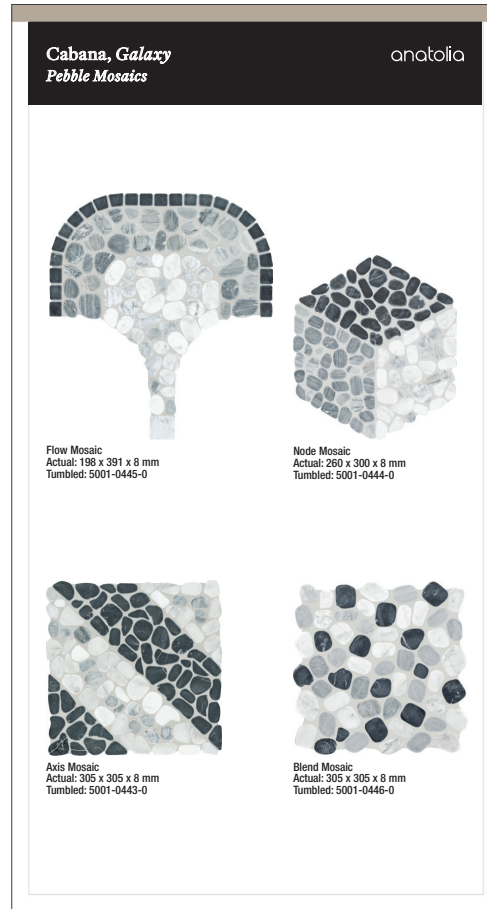
# Marketing support, *Sample Chips*

Sample chips are an essential tool to bring mood boards to life and inspire a cohesive design space. They need to be relatively small and yet contain all of the critical design and collection specifications needed.

Anatolia has created a sample chip program that categorizes sample chips into color coded material types, includes a sample chip affixed to an elegant backer card and includes all of the key technical information and formats for that color on its back label. Anatolia also developed a premium sample chip carrying case to easily and beautifully store, organize, and carry sample chips to meetings.



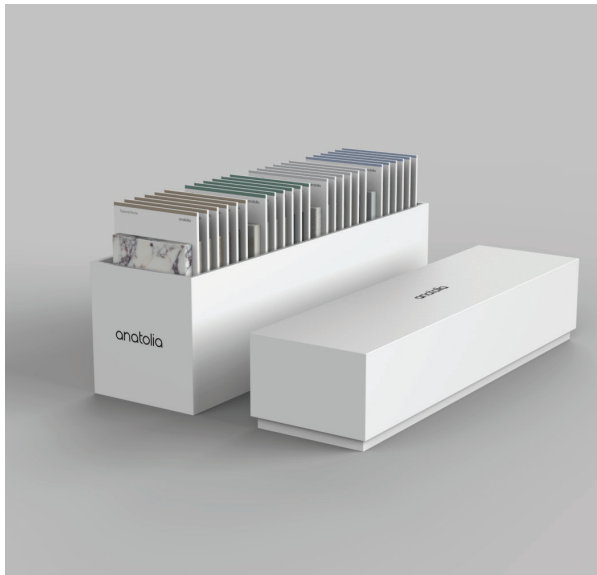
Backer Board Size: 3.25 x 6 in / 8.25 x 15.25 cm



<i>Sample Chips</i>	ITEM CODE	UPC
Cabana Jade Sample Chip	9902-2004-0	828492081426
Cabana Horizon Sample Chip	9902-2005-0	828492081433
Cabana River Sample Chip	9902-2006-0	828492081440
Cabana Galaxy Sample Chip	9902-2007-0	828492081457

# Marketing support, *Sample Chip Carrying Case*

Anatolia has developed a premium sample chip carrying case to easily and beautifully store, organize, and carry sample chips to meetings and for sample libraries. The case comes empty and can hold up to 24 sample chips.



ITEM DESCRIPTION	CONTENTS	ITEM CODE	UPC
4.1 x 14.8 x 7.5 in / 37.6 x 10.4 x 17.9 cm Sample Chip Carrying Case (Empty)	As per above	9902-1659-0	828492074879

*Discover more at*  
anatolia.com