

Cinq, *Glazed Porcelain + Ceramic.*

A muted and modern look with whispers of a textured appearance.



anatolia

Cinq, Glazed Porcelain + Ceramic.

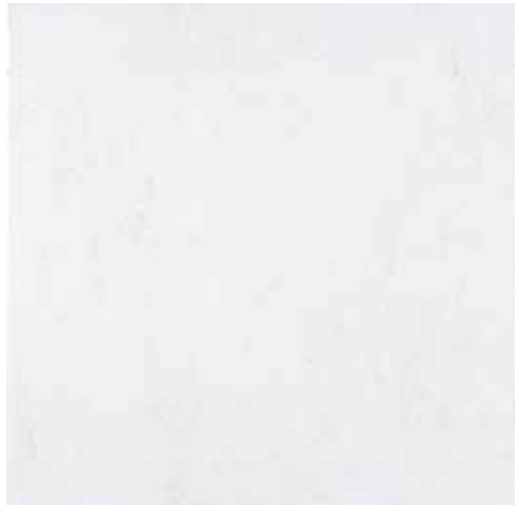
Contemporary tiles in
a palette of earthy colors.

The World of Anatolia

Passionate, dedicated and driven to bring together truly exceptional products that embody modernity, innovation and refinement. Anatolia provides its partnering customers across the world access to an extensive inventory as well as superior service, establishing itself among the largest tile and stone brands in the world.

anatolia

Colors at a glance



White



Cream



Grey

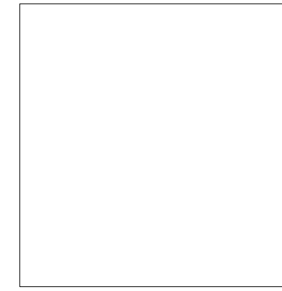


Brown



Black

Formats at a glance



13 x 13 in / 33 x 33 cm
Pressed
Matte



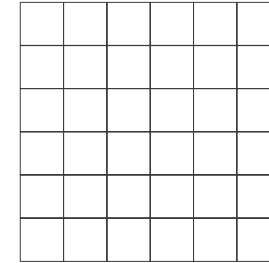
8 x 10 in / 19.9 x 24.9 cm
Pressed
Matte

Trim



3 x 8 in / 7.5 x 20 cm
Bullnose
Matte

Mosaic



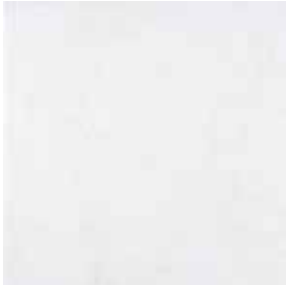
2 x 2 in / 5 x 5 cm
Mosaic
Matte



13 x 13 in / 33 x 33 cm Cinq Brown Matte Pressed Glazed Porcelain Tile



Cinq, *White*

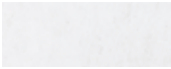


13 x 13 in / 33 x 33 cm
Pressed
Matte 4000-0021-0



8 x 10 in / 19.9 x 24.9 cm
Pressed
Matte 4000-0016-0

Trim

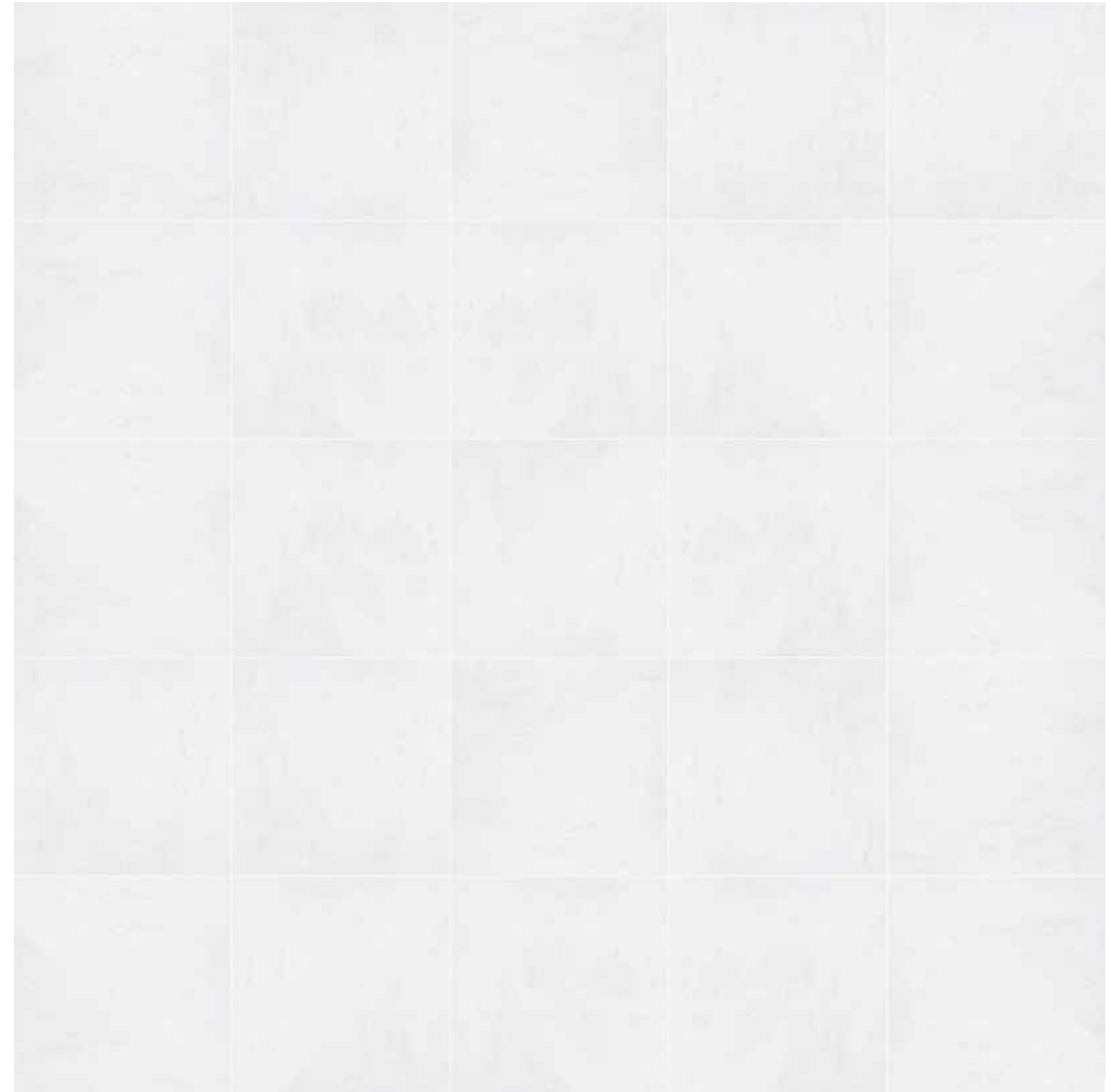


3 x 8 in / 7.5 x 20 cm
Bullnose
Matte 4002-0017-0

Mosaic



2 x 2 in / 5 x 5 cm
Mosaic
Matte 4001-0010-0



13 x 13 in / 33 x 33 cm image variations

Cinq, *Cream*



13 x 13 in / 33 x 33 cm
Pressed
Matte 4000-0019-0



8 x 10 in / 19.9 x 24.9 cm
Pressed
Matte 4000-0014-0

Trim

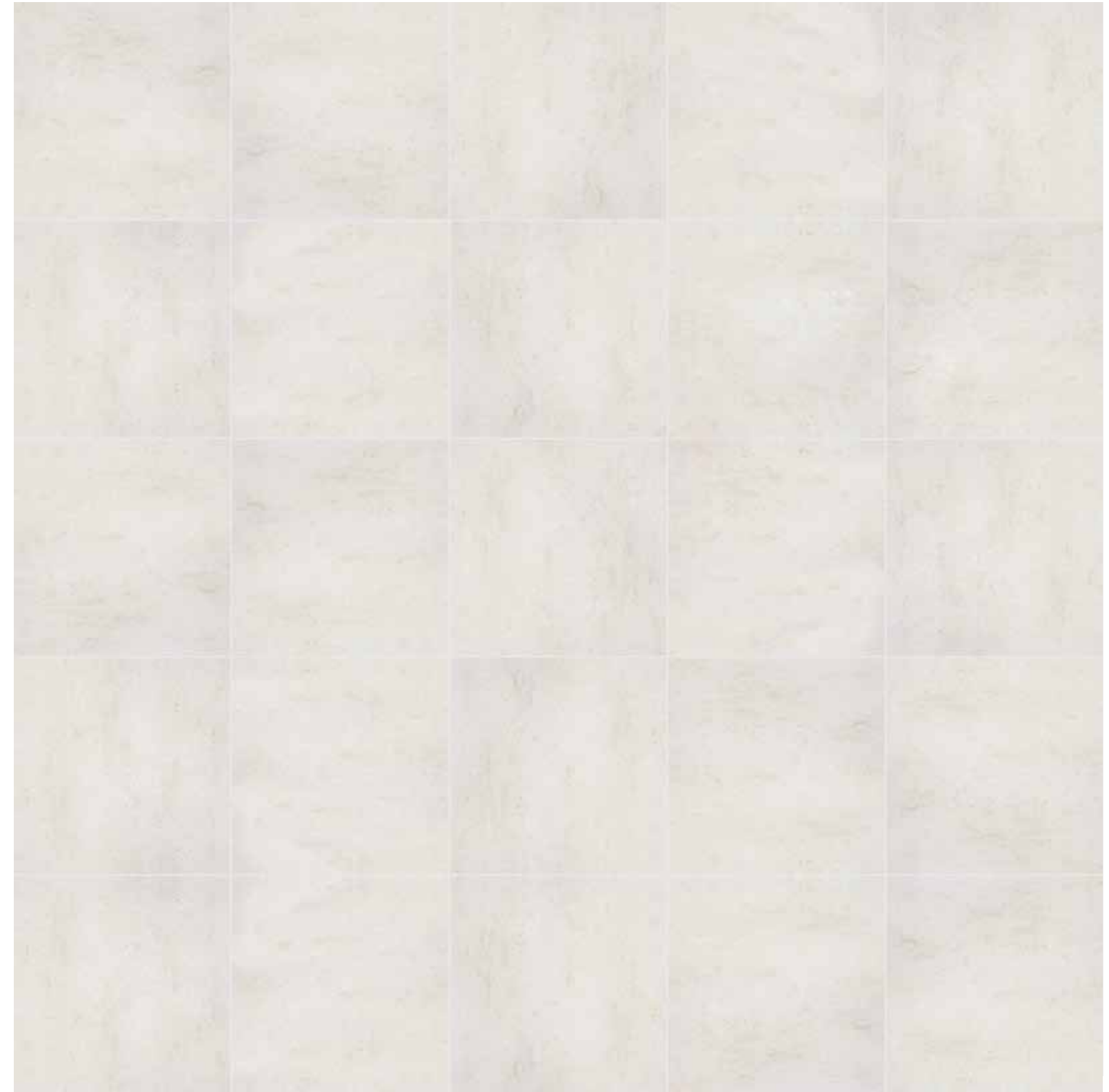


3 x 8 in / 7.5 x 20 cm
Bullnose
Matte 4002-0015-0

Mosaic



2 x 2 in / 5 x 5 cm
Mosaic
Matte 4001-0008-0



13 x 13 in / 33 x 33 cm image variations

Cinq, Grey



13 x 13 in / 33 x 33 cm
Pressed
Matte 4000-0020-0



8 x 10 in / 19.9 x 24.9 cm
Pressed
Matte 4000-0015-0

Trim



3 x 8 in / 7.5 x 20 cm
Bullnose
Matte 4002-0016-0

Mosaic



2 x 2 in / 5 x 5 cm
Mosaic
Matte 4001-0009-0



13 x 13 in / 33 x 33 cm image variations

Cinq, *Brown*



13 x 13 in / 33 x 33 cm
Pressed
Matte 4000-0018-0



8 x 10 in / 19.9 x 24.9 cm
Pressed
Matte 4000-0013-0

Trim

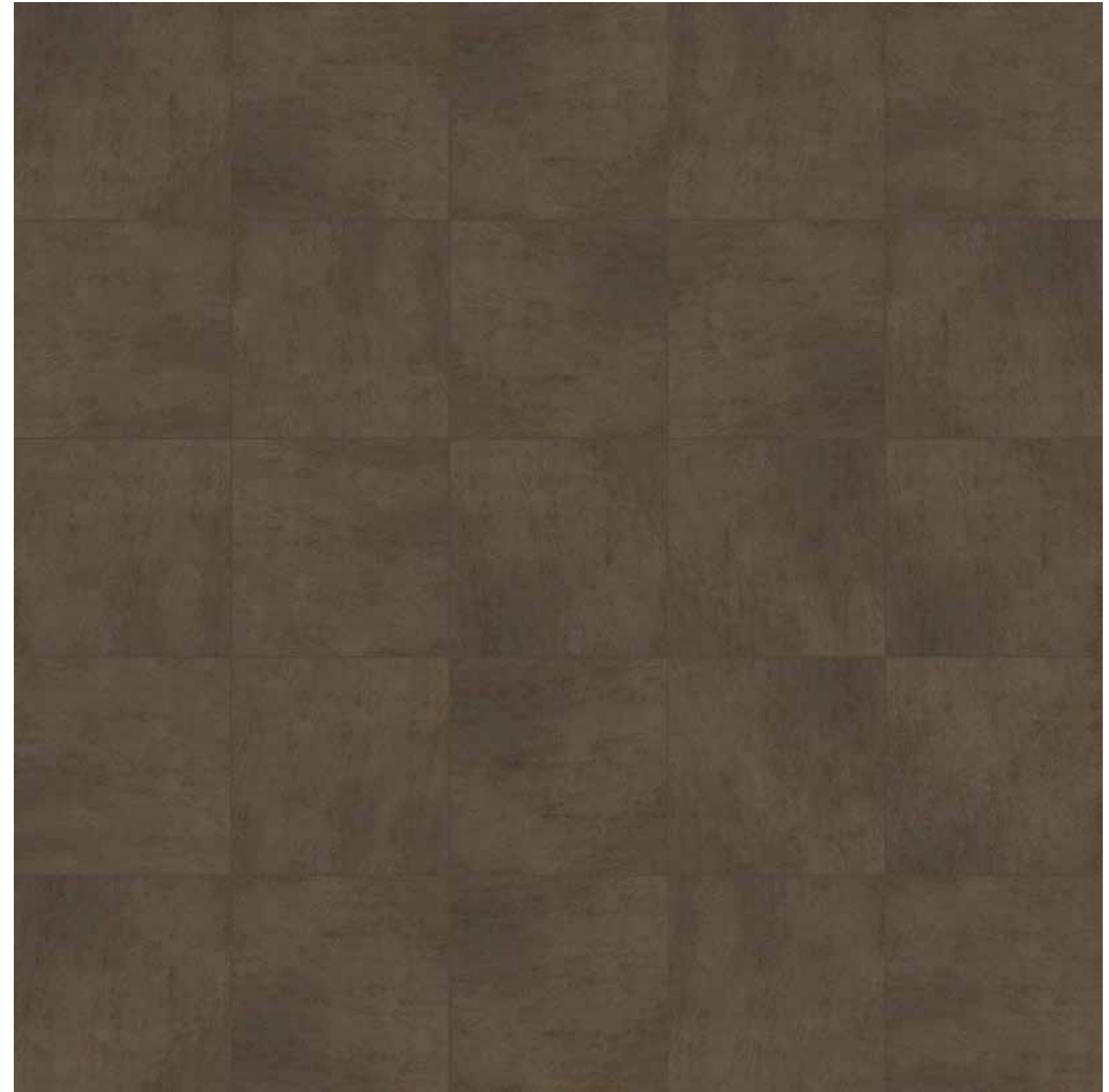


3 x 8 in / 7.5 x 20 cm
Bullnose
Matte 4002-0013-0

Mosaic



2 x 2 in / 5 x 5 cm
Mosaic
Matte 4001-0007-0

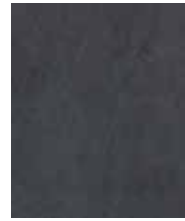


13 x 13 in / 33 x 33 cm image variations

Cinq, Black



13 x 13 in / 33 x 33 cm
Pressed
Matte 4000-0017-0



8 x 10 in / 19.9 x 24.9 cm
Pressed
Matte 4000-0012-0

Trim



3 x 8 in / 7.5 x 20 cm
Bullnose
Matte 4002-0011-0

Mosaic



2 x 2 in / 5 x 5 cm
Mosaic
Matte 4001-0006-0



13 x 13 in / 33 x 33 cm image variations

The Anatolia difference
Unmatched elegance and unparalleled perfection.

Anatolia reinvents shapes and design compositions through refined color palettes, innovative graphical refinements and creative reinterpretations of traditional, cultural and trend led inspirations. Meticulous care is taken to enhance a product's formation through graphical and technical improvements at every step of the development and execution process. This leads to the most exquisite and discerning tile collections.





Technical Performance
Avant-garde design and attention to detail.

The goal of Anatolia's design department was to create the utmost elegant and sophisticated product, a perfect blend of functionality and style. New technical aspects, innovative shapes, and a new color palette were designed to represent the vibrant and lively nature of metropolitan city life, inspired by its culture and history.


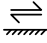







Packaging information

Key logistical details including item codes and product specifications.

<i>Cinq Product & Packaging Information</i>															
	ACTUAL DIMENSIONS	THICKNESS	BLACK ITEM CODE	BROWN ITEM CODE	CREAM ITEM CODE	GREY ITEM CODE	WHITE ITEM CODE	LBS BOX	KGS BOX	PCS BOX	SOFT BOX	M ² BOX	BXS SKID	SOFT SKID	M ² SKID
13 x 13 in / 32.8 x 32.8 cm CINQ MATTE PRESSED GLAZED PORCELAIN TILE	328 x 328 mm	8 mm	4000-0017-0	4000-0018-0	4000-0019-0	4000-0020-0	4000-0021-0	52.45	23.79	13	15.28	1.42	46	702.88	65.32
8 x 10 in / 19.9 x 24.9 cm CINQ MATTE PRESSED GLAZED CERAMIC TILE	199 x 249 mm	6.3 mm	4000-0012-0	4000-0013-0	4000-0014-0	4000-0015-0	4000-0016-0	26.2	11.88	20	10.76	1	92	989.92	92
MOSAIC															
2 x 2 in / 5 x 5 cm CINQ MATTE GLAZED CERAMIC MOSAIC	329 x 329 mm	8 mm	4001-0006-0	4001-0007-0	4001-0008-0	4001-0009-0	4001-0011-0	37.29	16.91	10	11.74	1.08	48	563.52	51.96
TRIM															
3 x 8 in / 7.5 x 20 cm CINQ MATTE GLAZED CERAMIC BULLNOSE	75 x 200 mm	6.3 mm	4002-0011-0	4002-0013-0	4002-0015-0	4002-0016-0	4002-0017-0	7.17	3.25	30	N/A	N/A	150	4500 PCS	

Technical information

Tile collection performance based on industry standards.

<i>Technical Information</i>		8 x 10 in / 19.9 x 24.9 cm MATTE GLAZED CERAMIC	13 x 13 in / 32.8 x 32.8 cm MATTE GLAZED PORCELAIN
 WATER ABSORPTION	ANSI / ISO - (%)	10% ≤E ≤16% - P4	< 0.5%
 ABRASION RESISTANCE	ANSI / ISO	CLASS 0	CLASS 3
 SCRATCH HARDNESS	ANSI / ISO - (Mohs)	3	6
 BREAKING STRENGTH	ANSI - (lbf) ISO - (N)	>230 ≥1000	≥300 ≥1300
 SHADE VARIATION		V1	
 SLIP RESISTANCE	ANSI - DCOF (WET) ISO - R VALUE	MATTE N/A MATTE N/A	MATTE ≥0.50 (ID, IW, IW+) MATTE R(-)
 CHEMICAL RESISTANCE	ANSI / ISO	CLASS B	CLASS A
 STAIN RESISTANCE	ANSI / ISO	CLASS B CLASS 4	CLASS A CLASS 5
 FROST RESISTANCE	ANSI / ISO	NOT RESISTANT	PASS

Test values are based on ANSI / ISO standards according to: ANSI A137.1 - Porcelain tile P1 Class, ISO 13006 - G - Bia Group - En 14411 - G - Bia Group. Variances in test values can occur in different production lots.
Test values are based on ANSI / ISO standards according to: ANSI A137.1 Non-Vitreous P4 Class, ISO 13006 - L - Group BIII - EN 14411 - L - Group BIII. Variances in test values can occur in different production lots.

Usage recommendations

Anatolia's recommendations for suitable applications.

<i>Usage Recommendations*</i>		MATTE GLAZED CERAMIC		MATTE GLAZED PORCELAIN	
APPLICATION		WALL	FLOOR	WALL	FLOOR
INTERIOR	RESIDENTIAL	•	•	•	ID, IW, IW+
	COMMERCIAL	•	•	•	ID, IW, IW+
	HEAVY COMMERCIAL				
EXTERIOR	RESIDENTIAL / COMMERCIAL			•	

* These recommendations are not defined by ANSI/ISO standards.

DCOF Classifications per ANSI A326.3: (ID): Interior, Dry (IW): Interior, Wet (IW+): Interior, Wet Plus (EW): Exterior, Wet (O/G): Oils/Greases

* Factors other than the noted DCOF result must also be taken into consideration. Such factors include, but are not limited to, expected contaminants, drainage, surface texture, effect of structure on the DCOF measurement, number of grout joints, traction-enhancing features, and intended use in addition to the other criteria noted in standard ANSI A326.3

The World of Anatolia

We are a constellation of people and places. Get in touch.

CANADA
TORONTO HEAD OFFICE,
SHOWROOM AND DISTRIBUTION
CENTER

8300 Huntington Road
Vaughan, ON, L4H 4Z6
Canada

info@anatolia.com

Tel: +1 905 771 3800
Toll free tel: 1 877 311 3434
Fax: +1 905 771 6300
Fax: +1 866 324 1838

USA
SAVANNAH OFFICE, SHOWROOM
AND DISTRIBUTION CENTER
Anatolia (USA) Inc.
Tel: +1 877 311 3434

SAVANNAH WAREHOUSE #1
202 International Trade Pkwy
Port Wentworth, GA, 31407
USA
Tel: +1 912 438 5167

SAVANNAH WAREHOUSE #2
250 International Trade Pkwy
Port Wentworth, GA, 31407
USA
Tel: +1 912 438 5167

TURKIYE
IZMIR OFFICE, SHOWROOM
AND DISTRIBUTION CENTRE

Aliağa Organize Sanayi Bölgesi
Çoraklar Mah. 5000 Sk. No: 34
35800 Aliağa, İzmir,
Türkiye
Tel: +90 232 520 7300

REGIONAL OFFICES
TURKIYE
Oguzhan Mah. Hoca Ahmet Yesevi Cad.
Ada Plaza No:7 Kat:3 Daire:19
15300 Bucak, Burdur,
Türkiye

CHINA
Room 517 Yi Shu Da Lou Ji Hua 4 Road
Chan Cheng District, Foshan City
Guang Dong Province, 528000
China

INDIA
206 - Pacific Business Park
Mahendra Nagar (Part)
8/A - National High Way
Morbi, Gujarat, 363642
India

USA
Anatolia (USA) Inc.
131 Crosslake Park Dr., Suite 203
 Mooresville, NC, 28117
USA
Tel: +1 877 311 3434

Credits

ART DIRECTION
AND GRAPHIC DESIGN
Juma

Partnerships and Associations



Discover more at
anatolia.com

