

Crossweave, *Color Body Porcelain*.

A modern interpretation of a delicate fabric-weave recreated in porcelain. Comforting and stimulating.



anatolia

Crossweave, Color Body Porcelain.

Fashion forward textures.

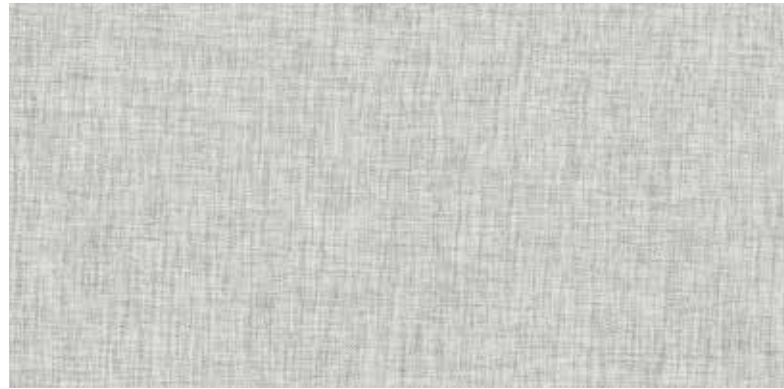
The World of Anatolia

Passionate, dedicated and driven to bring together truly exceptional products that embody modernity, innovation and refinement. Anatolia provides its partnering customers across the world access to an extensive inventory as well as superior service, establishing itself among the largest tile and stone brands in the world.

anatolia

Colors at a glance

The delicate and neutral color palette of the Crossweave collection enhances the comfort expressed through its textile inspiration.



Heather Grey



Canvas



Flax



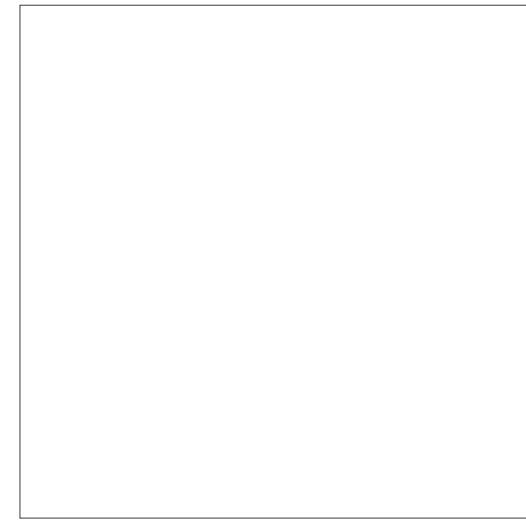
Parchment



Shade

Formats and finishes at a glance

The collection is offered in a classic square and rectangular form, along with basketweave mosaics and bullnose.



24 x 24 in / 60 x 60 cm
Rectified
Matte



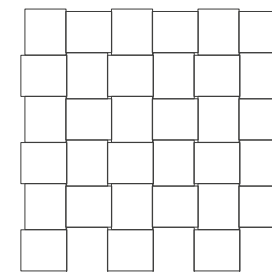
12 x 24 in / 30 x 60 cm
Rectified
Matte

Trim



3 x 24 in / 7.2 x 60 cm
Bullnose
Matte

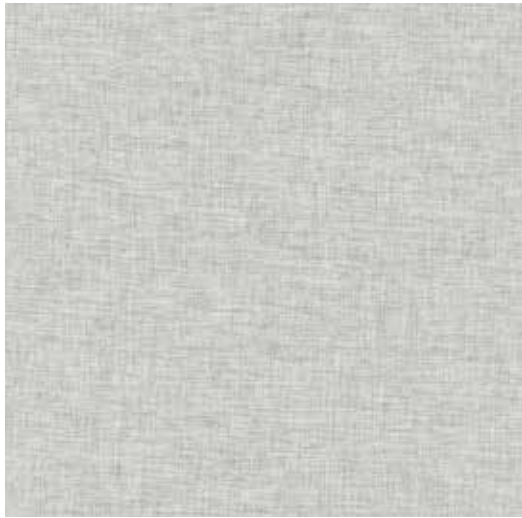
Mosaic



2 x 2 in / 5 x 5 cm
Basketweave Mosaics
Matte



Crossweave, *Heather Grey*



24 x 24 in / 60 x 60 cm
Rectified
Matte 4500-0205-1



12 x 24 in / 29.8 x 60 cm
Rectified
Matte 4500-0204-1

Trim

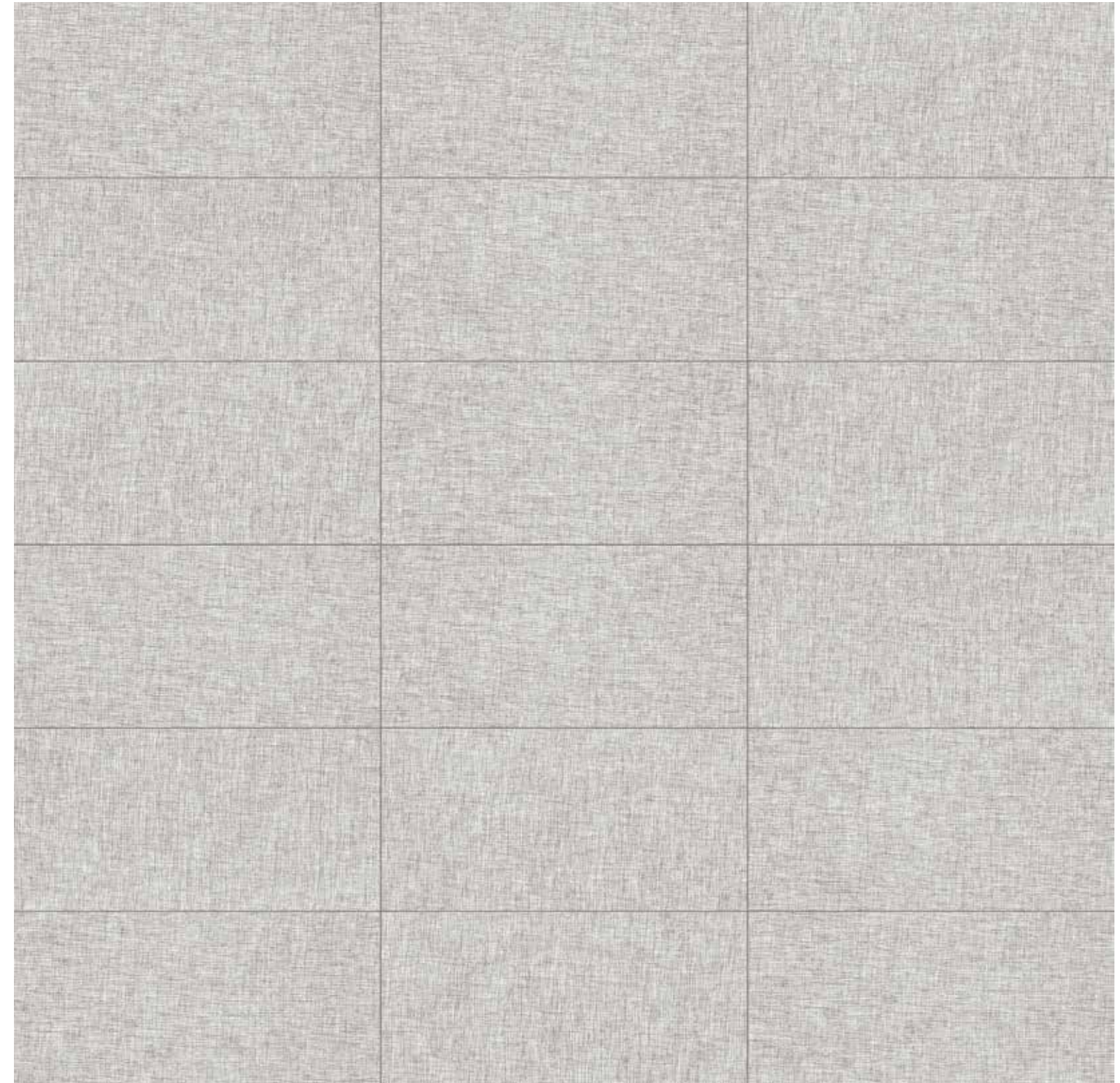


3 x 24 in / 7.2 x 60 cm
Bullnose
Matte 4502-0068-1

Mosaic

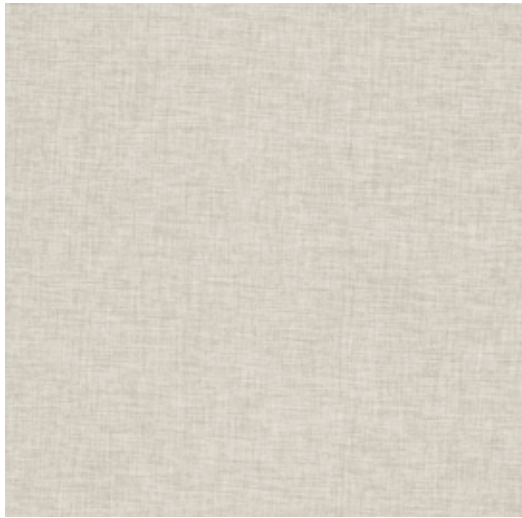


2 x 2 in / 5 x 5 cm
Basketweave Mosaic
Matte 4501-0071-1



12 x 24 in / 29.8 x 60 cm image variations

Crossweave, *Canvas*



24 x 24 in / 60 x 60 cm
Rectified
Matte 4500-0201-1



12 x 24 in / 30 x 60 cm
Rectified
Matte 4500-0200-1

Trim

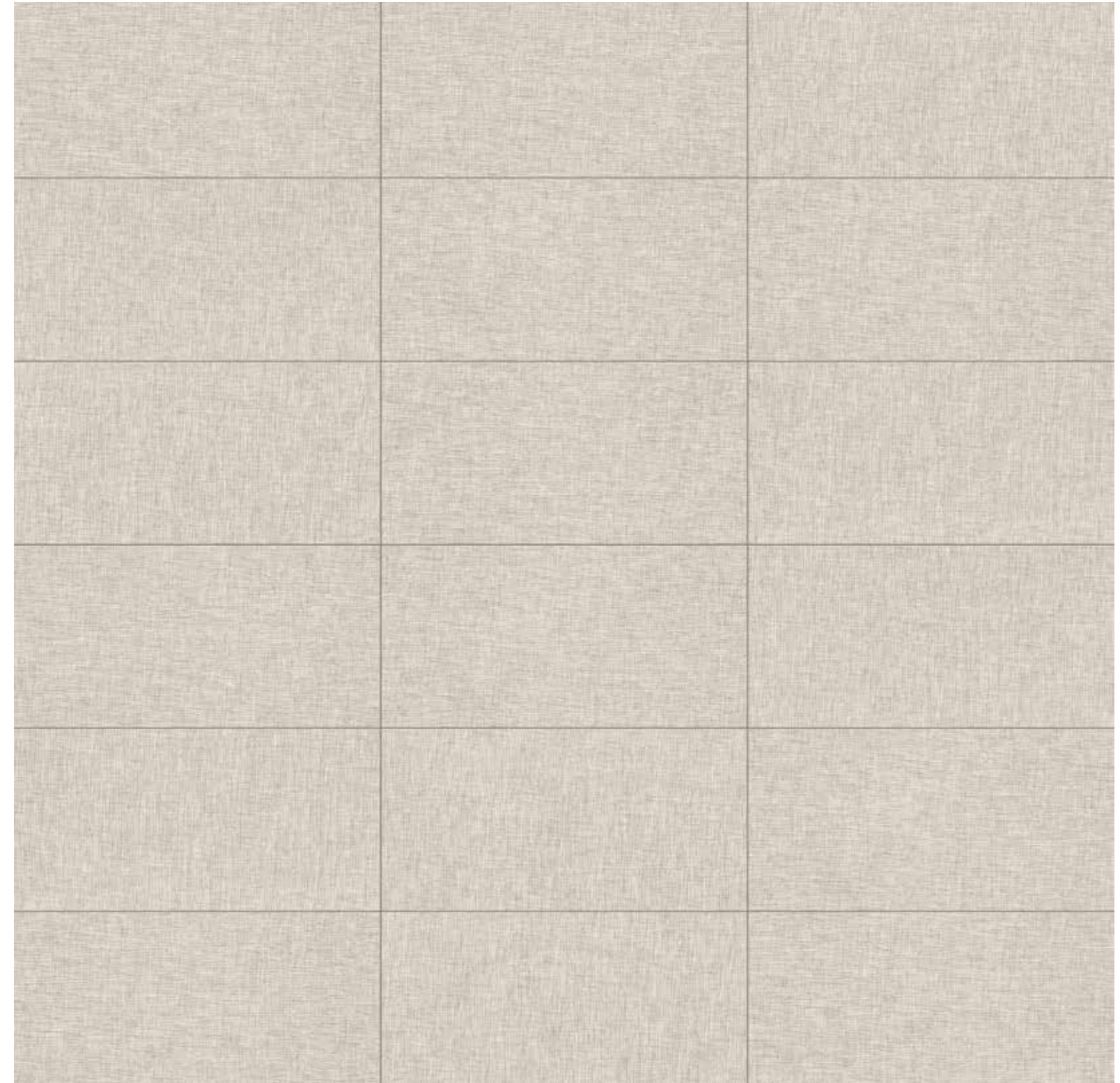


3 x 24 in / 7.2 x 60 cm
Bullnose
Matte 4502-0066-1

Mosaic



2 x 2 in / 5 x 5 cm
Basketweave Mosaic
Matte 4501-0069-1



12 x 24 in / 30 x 60 cm image variations

Crossweave, *Flax*



24 x 24 in / 60 x 60 cm
Rectified
Matte 4500-0203-1



12 x 24 in / 30 x 60 cm
Rectified
Matte 4500-0202-1

Trim

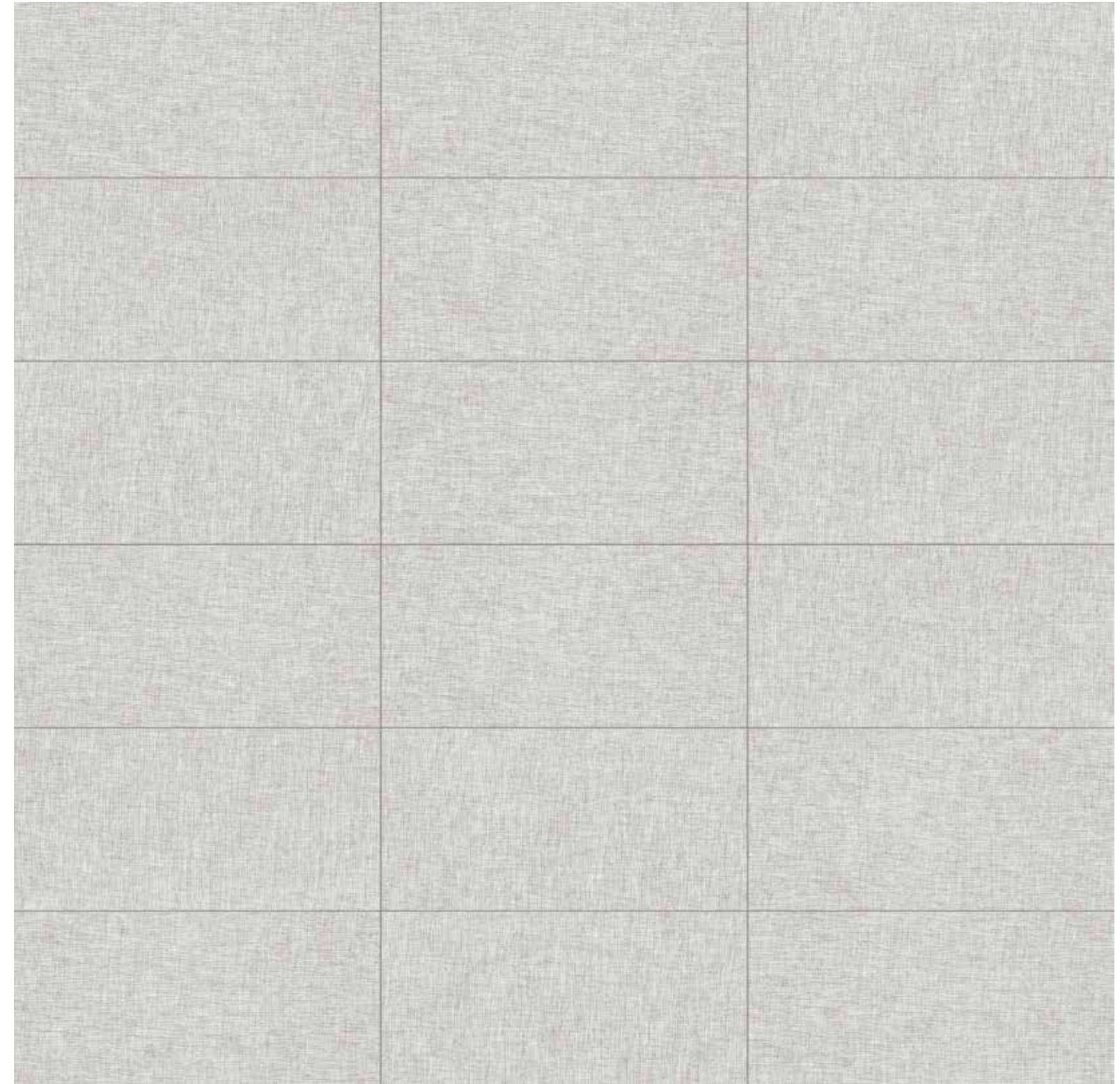


3 x 24 in / 7.2 x 60 cm
Bullnose
Matte 4502-0067-1

Mosaic



2 x 2 in / 5 x 5 cm
Basketweave Mosaic
Matte 4501-0070-1



12 x 24 in / 30 x 60 cm image variations

Crossweave, *Parchment*



24 x 24 in / 60 x 60 cm
Rectified
Matte 4500-0207-1



12 x 24 in / 30 x 60 cm
Rectified
Matte 4500-0206-1

Trim



3 x 24 in / 7.2 x 60 cm
Bullnose
Matte 4502-0069-1

Mosaic

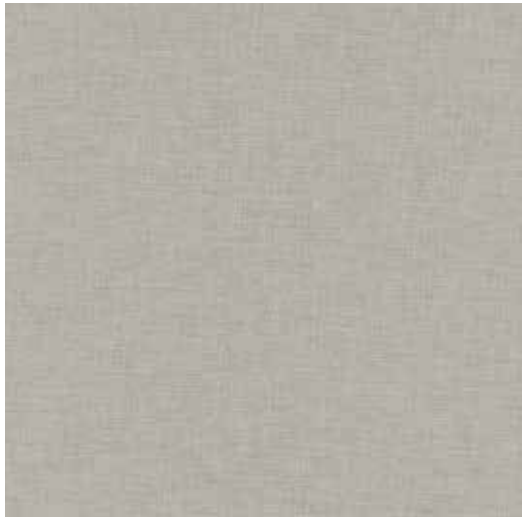


2 x 2 in / 5 x 5 cm
Basketweave Mosaic
Matte 4501-0072-1



12 x 24 in / 30 x 60 cm image variations

Crossweave, *Shade*



24 x 24 in / 60 x 60 cm
Rectified
Matte 4500-0209-1



12 x 24 in / 30 x 60 cm
Rectified
Matte 4500-0208-1

Trim

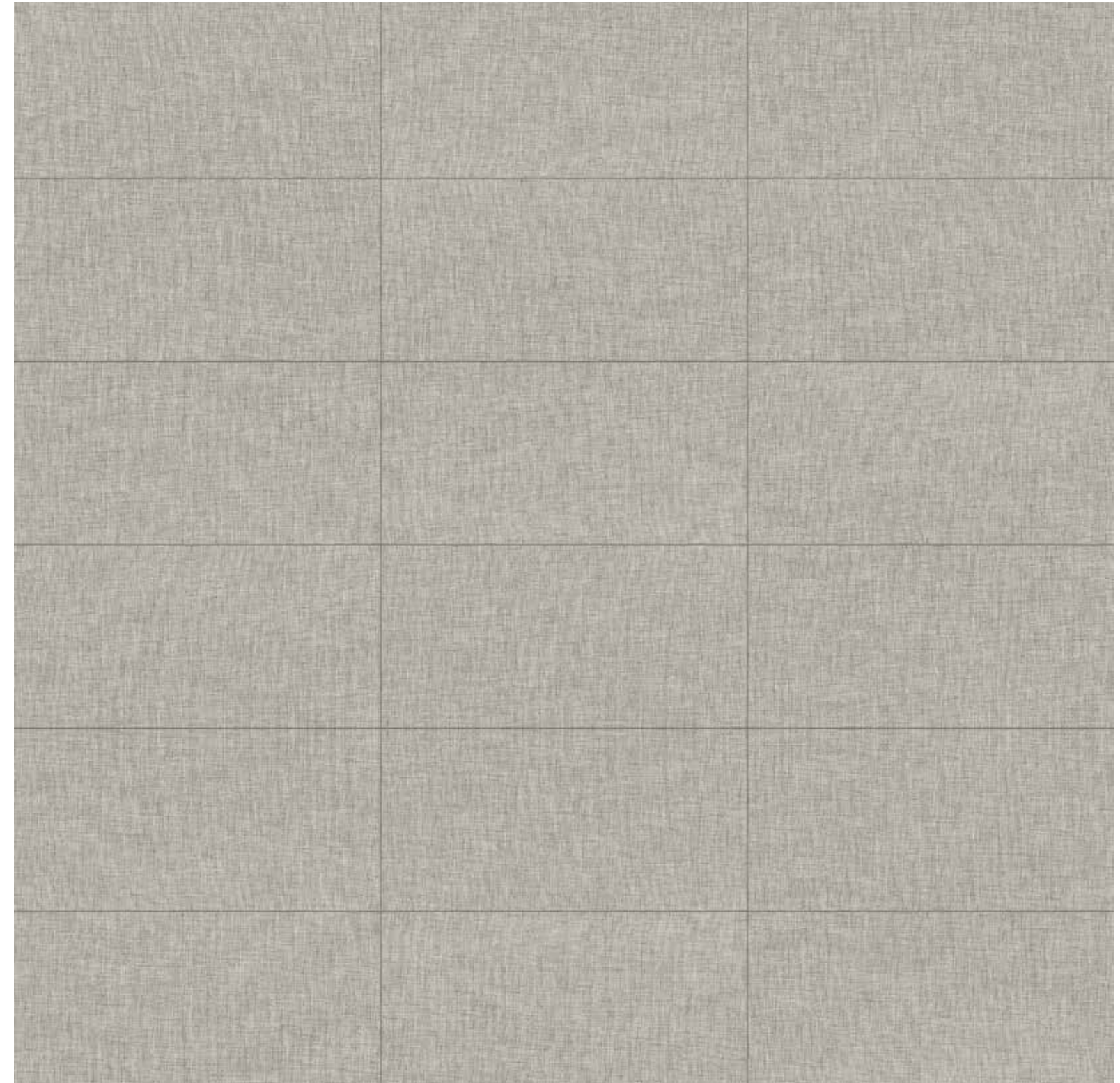


3 x 24 in / 7.2 x 60 cm
Bullnose
Matte 4502-0070-1

Mosaic



2 x 2 in / 5 x 5 cm
Basketweave Mosaic
Matte 4501-0073-1



12 x 24 in / 30 x 60 cm image variations

The Anatolia difference
Unmatched elegance and unparalleled perfection.

Anatolia reinvents shapes and design compositions through refined color palettes, innovative graphical refinements and creative reinterpretations of traditional, cultural and trend led inspirations. Meticulous care is taken to enhance a product's formation through graphical and technical improvements at every step of the development and execution process. This leads to the most exquisite and discerning tile collections.





Technical Performance
Avant-garde design and attention to detail.

The goal of Anatolia's design department was to create the utmost elegant and sophisticated product, a perfect blend of functionality and style. New technical aspects, innovative shapes, and a new color palette were designed to represent the vibrant and lively nature of metropolitan city life, inspired by its culture and history.

Packaging information

Key logistical details including item codes and product specifications.

Crossweave Product & Packaging Information

	ACTUAL DIMENSIONS	THICKNESS	CANVAS ITEM CODE	FLAX ITEM CODE	HEATHER GREY ITEM CODE	PARCHMENT ITEM CODE	SHADE ITEM CODE	LBS BOX	KGS BOX	PCS BOX	SQFT BOX	M ² BOX	BXS SKID	SQFT SKID	M ² SKID
24 x 24 in / 60 x 60 cm MATTE RECTIFIED COLOR BODY PORCELAIN TILE	600 x 600 mm	9.6 mm	4500-0201-1	4500-0203-1	4500-0205-1	4500-0207-1	4500-0209-1	66.14	30	4	15.5	1.44	32	496	46.08
12 x 24 in / 30 x 60 cm MATTE RECTIFIED COLOR BODY PORCELAIN TILE	300 x 600 mm	9.6 mm	4500-0200-1	4500-0202-1	4500-0204-1	4500-0206-1	4500-0208-1	63.93	29	8	15.39	1.43	32	492.48	45.76
MOSAIC															
2 x 2 in / 5 x 5 cm BASKETWEAVE MATTE COLOR BODY PORCELAIN MOSAIC	298 x 298 mm	9.6 mm	4501-0069-1	4501-0070-1	4501-0071-1	4501-0072-1	4501-0073-1	38.45	17.44	10	9.69	0.88	45	436.05	39.96
TRIM															
3 x 24 in / 7.2 X 60 cm MATTE COLOR BODY PORCELAIN BULLNOSE	72 x 600 mm	9.6 mm	4502-0066-1	4502-0067-1	4502-0068-1	4502-0069-1	4502-0070-1	31.92	14.48	15	N/A	N/A	56	840 PCS	840 PCS

Technical information

Tile collection performance based on industry standards.

Technical Information

	WATER ABSORPTION	ANSI / ISO - (%)	< 0.5%
	ABRASION RESISTANCE	ANSI / ISO	CLASS 4
	SCRATCH HARDNESS	ANSI / ISO - (Mohs)	6
	BREAKING STRENGTH	ANSI - (lbf) ISO - (N)	≥450 ≥2000
	SHADE VARIATION		V1
	SLIP RESISTANCE	ANSI - DCOF (WET) ISO - R VALUE	MATTE ≥0.50 MATTE R (-)
	CHEMICAL RESISTANCE	ANSI / ISO	CLASS A
	STAIN RESISTANCE	ANSI ISO	CLASS A / CLASS 5
	FROST RESISTANCE	ANSI / ISO	PASS

Test values are based on ANSI / ISO standards according to: ANSI A137.1 - Porcelain tile P1 Class, ISO 13006 - G - Bia Group, En 14411 - G - Bia Group. Variances in test values can occur in different production lots.

Usage recommendations

Anatolia's recommendations for suitable applications.

Usage Recommendations*		MATTE COLOR BODY PORCELAIN	
APPLICATION		WALL	FLOOR
INTERIOR	RESIDENTIAL	•	•
	COMMERCIAL	•	•
	HEAVY COMMERCIAL	•	
EXTERIOR	RESIDENTIAL / COMMERCIAL	•	

* These recommendations are not defined by ANSI/ISO standards.

The World of Anatolia

We are a constellation of people and places. Get in touch.

CANADA
TORONTO HEAD OFFICE,
SHOWROOM AND DISTRIBUTION
CENTER

8300 Huntington Road
Vaughan, ON, L4H 4Z6
Canada

info@anatolia.com

Tel: +1 905 771 3800
Toll free tel: 1 877 311 3434
Fax: +1 905 771 6300
Fax: +1 866 324 1838

USA
SAVANNAH OFFICE, SHOWROOM
AND DISTRIBUTION CENTER
Anatolia (USA) Inc.
Tel: +1 877 311 3434

SAVANNAH WAREHOUSE #1
202 International Trade Pkwy
Port Wentworth, GA, 31407
USA
Tel: +1 912 438 5167

SAVANNAH WAREHOUSE #2
250 International Trade Pkwy
Port Wentworth, GA, 31407
USA
Tel: +1 912 438 5167

TURKEY
IZMIR OFFICE, SHOWROOM
AND DISTRIBUTION CENTRE

Aliağa Organize Sanayi Bölgesi
Çoraklar Mah. 5000 Sk. No: 34
35800 Aliağa, İzmir,
Türkiye
Tel: +90 232 520 7300

REGIONAL OFFICES
TURKEY
Oguzhan Mah. Hoca Ahmet Yesevi Cad.
Ada Plaza No:7 Kat:3 Daire:19
15300 Bucak, Burdur,
Türkiye

CHINA
Room 517 Yi Shu Da Lou Ji Hua 4 Road
Chan Cheng District, Foshan City
Guang Dong Province, 528000
China

INDIA
206 - Pacific Business Park
Mahendra Nagar (Part)
8/A - National High Way
Morbi, Gujarat, 363642
India

USA
Anatolia (USA) Inc.
131 Crosslake Park Dr., Suite 203
 Mooresville, NC, 28117
USA
Tel: +1 877 311 3434

Credits

ART DIRECTION
AND GRAPHIC DESIGN
Juma

Partnerships and Associations



Discover more at
anatolia.com

