

Element, *Glass.*
Merchandising



Marketing support, *Floor Display*

This collection's beauty is brought to life in a floor display that features the tiles in the collection in compact and efficient display board sets. The display board sets feature various tile formats on the front of the board. Furthermore, great care has been taken to maximize display space efficiency while providing the most motivating presentation of the collection.

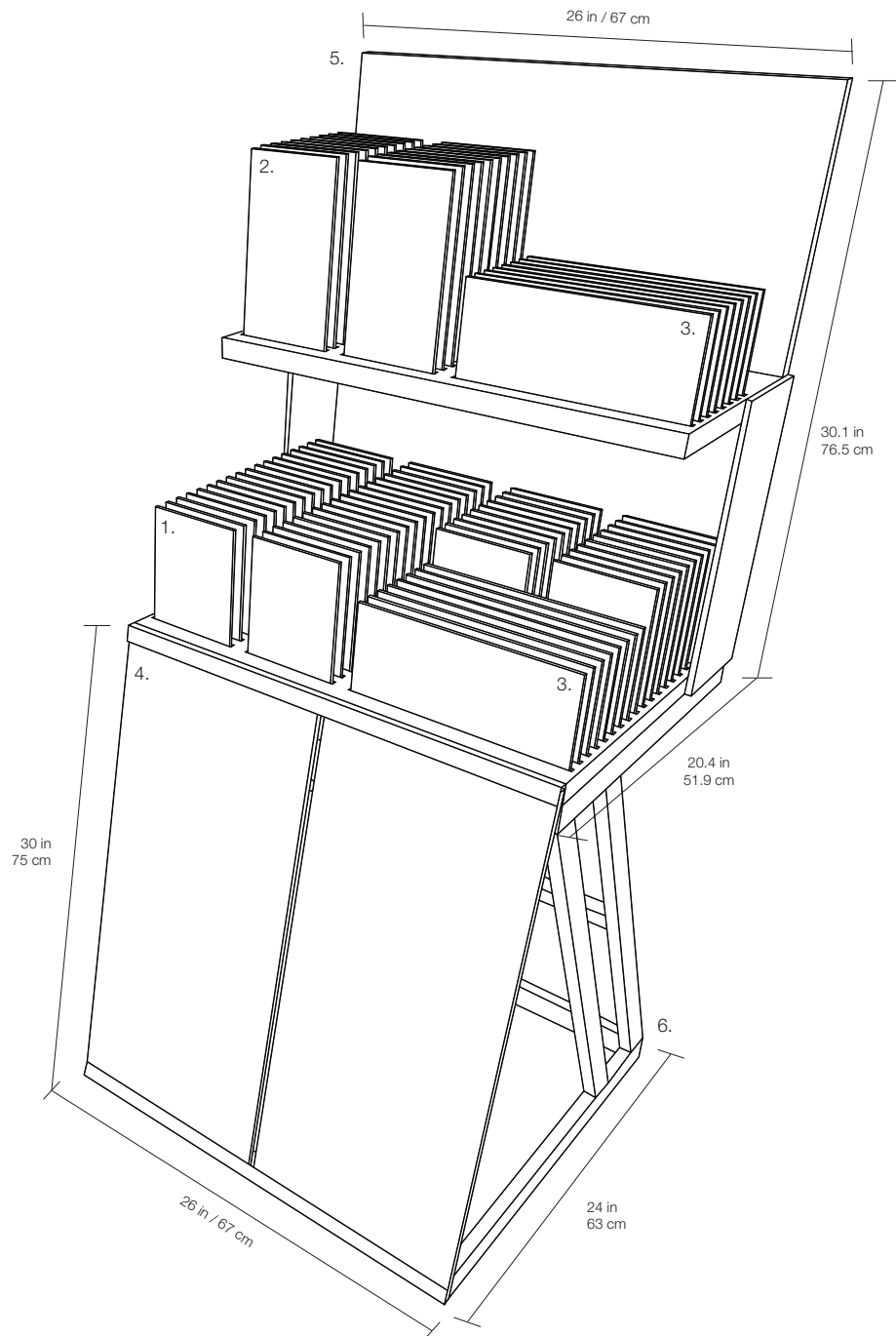


Element, *Floor Display Kit*

Key specifications and item codes

ITEM DESCRIPTION	CONTENTS	ITEM CODE
ELEMENT DISPLAY BOARD KIT	4 DISPLAY BOARD SETS (92 BOARDS), 2 DISPLAY BASES	9901-0077-0

- 1. Element Display Board Set (47 Boards) - Part 1
- 2. Element Display Board Set (27 Boards) - Part 2
- 3. Element Display Board Set (16 Boards) - Part 3
- 4. Element Display Board Set (2 Boards) - Part 4
- 5. Element MDF Display Base - 90 Slots
- 6. Element Metal Display Base

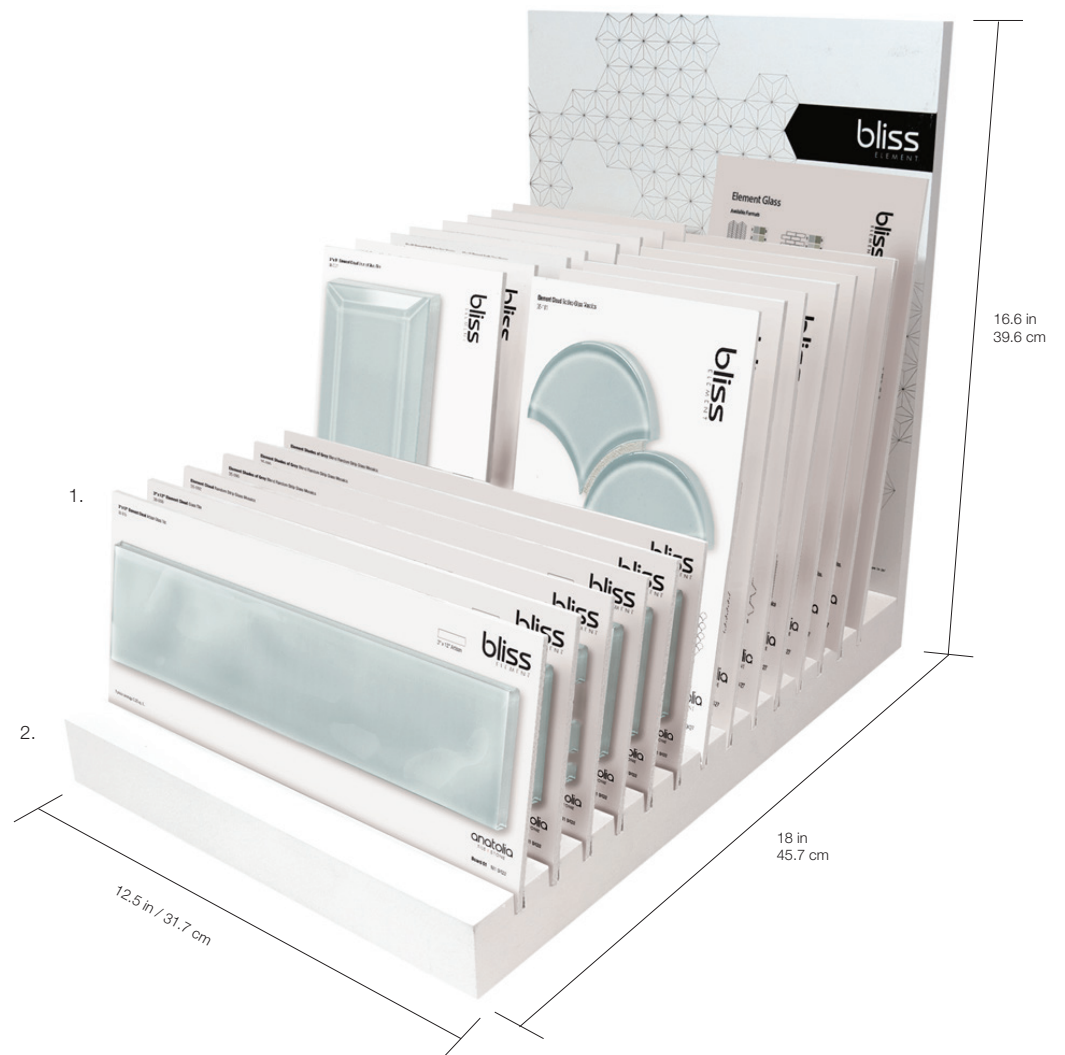


Marketing support, *Table Top Display Kit*

ITEM DESCRIPTION	CONTENTS	ITEM CODE
ELEMENT TABLE TOP DISPLAY KIT	1 BOARD SET (22 BOARDS), 1 DISPLAY BASE	9901-0078-0

1. Element Display Board Set - 22 Boards

2. Element Display Base - 22 slots

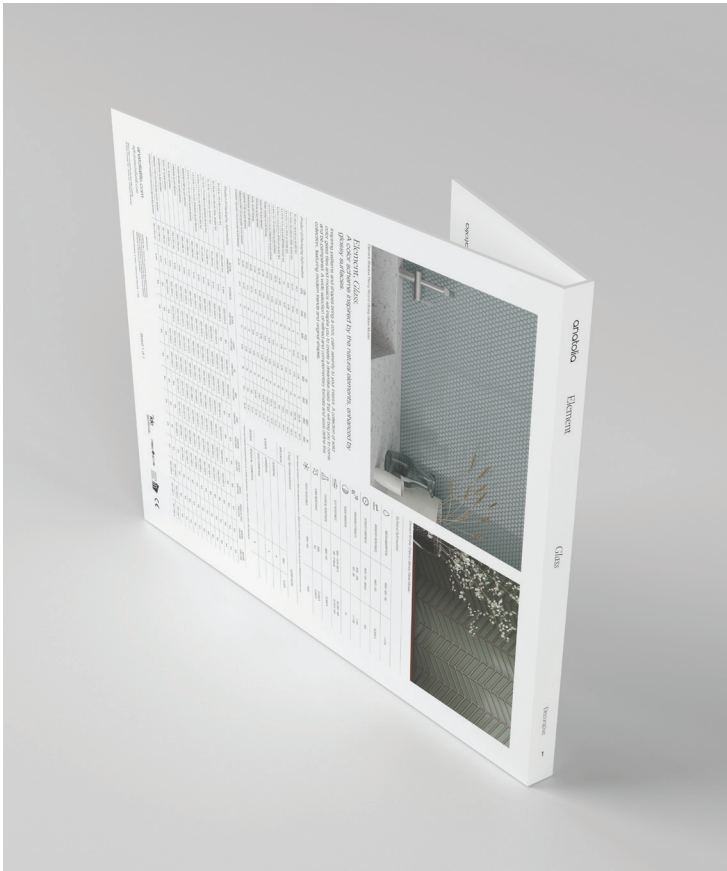


Marketing support, *A&D Board*

Today's A&D community and dealer network has very limited space in their design libraries and customer showrooms. Therefore, Anatolia wanted to reinvent the typical contractor board and architectural binder by combining them into one multipurpose and space efficient merchandising tool.

Once opened up the board acts like a traditional contractor board with an easy to hold handle with all the information needed to make design decisions. On the front are sizes and finishes at a glance along with color chips and room renders. On the back are all of the critical technical specifications needed to specify a design space along with room scenes for inspiration.

This unique to Anatolia A&D board sits on shelf folded with a book like spine that clearly identifies the collection name, material type and corresponding inspiration for the collection. When pulled out slightly, one can easily see the collection's colors at a glance.



A&D Board Outside



A&D Board Inside

<i>A&D Board</i>	ITEM DESCRIPTION	ITEM CODE	UPC
A&D Board for Colors Cloud, Earth, Ice, Mist, Sand, Shadow, Skylight, Smoke	Element A&D Board	9902-1349-0	828492068243

A&D Board, Dimensions

12 in / 30.5 cm

Element Glass
Decorative

A color scheme inspired by the natural elements, enhanced by glossy surfaces.

Colors and finishes

anotolia
Element
Glass
Decorative

Element Glass
Decorative

A color scheme inspired by the natural elements, enhanced by glossy surfaces.

Inspiring patterns and shapes bring a cool, calm serenity to your interior. A collection of solid color glass tiles and mosaics will inspire you to create a dreamlike oasis that will beg you to come and be pampered. A wide selection of refined and complementary formats and sizes define this collection, featuring modern trends and original shapes.

Schedule of Information

WATER RESISTANT	ANSI (ISO) 111	111-101
ANTI-SCALD PROTECTION	ANSI (ISO) 111	111-101
ANTI-CRACKING	ANSI (ISO) 111	111-101
ANTI-IMPACT	ANSI (ISO) 111	111-101
ANTI-GLASS	ANSI (ISO) 111	111-101
ANTI-GRIT	ANSI (ISO) 111	111-101
ANTI-SPALL	ANSI (ISO) 111	111-101
ANTI-TEAR	ANSI (ISO) 111	111-101
ANTI-TOUR	ANSI (ISO) 111	111-101
ANTI-TURN	ANSI (ISO) 111	111-101
ANTI-WEAR	ANSI (ISO) 111	111-101
ANTI-IMPACT	ANSI (ISO) 111	111-101
ANTI-GLASS	ANSI (ISO) 111	111-101
ANTI-GRIT	ANSI (ISO) 111	111-101
ANTI-SPALL	ANSI (ISO) 111	111-101
ANTI-TEAR	ANSI (ISO) 111	111-101
ANTI-TURN	ANSI (ISO) 111	111-101
ANTI-WEAR	ANSI (ISO) 111	111-101

Large Recommendations

RESIDENTIAL	RESIDENTIAL	RESIDENTIAL
COMMERCIAL	COMMERCIAL	COMMERCIAL
INDUSTRIAL	INDUSTRIAL	INDUSTRIAL

anotolia
Element
Glass
Decorative

14.76 in
37.5 cm

0.7 in
1.8 cm

Element Glass
Decorative

Formats at a Glance

anotolia
Element
Glass
Decorative

Element Glass
Decorative

A color scheme inspired by the natural elements, enhanced by glossy surfaces.

Inspiring patterns and shapes bring a cool, calm serenity to your interior. A collection of solid color glass tiles and mosaics will inspire you to create a dreamlike oasis that will beg you to come and be pampered. A wide selection of refined and complementary formats and sizes define this collection, featuring modern trends and original shapes.

Schedule of Information

WATER RESISTANT	ANSI (ISO) 111	111-101
ANTI-SCALD PROTECTION	ANSI (ISO) 111	111-101
ANTI-CRACKING	ANSI (ISO) 111	111-101
ANTI-IMPACT	ANSI (ISO) 111	111-101
ANTI-GLASS	ANSI (ISO) 111	111-101
ANTI-GRIT	ANSI (ISO) 111	111-101
ANTI-SPALL	ANSI (ISO) 111	111-101
ANTI-TEAR	ANSI (ISO) 111	111-101
ANTI-TURN	ANSI (ISO) 111	111-101
ANTI-WEAR	ANSI (ISO) 111	111-101
ANTI-IMPACT	ANSI (ISO) 111	111-101
ANTI-GLASS	ANSI (ISO) 111	111-101
ANTI-GRIT	ANSI (ISO) 111	111-101
ANTI-SPALL	ANSI (ISO) 111	111-101
ANTI-TEAR	ANSI (ISO) 111	111-101
ANTI-TURN	ANSI (ISO) 111	111-101
ANTI-WEAR	ANSI (ISO) 111	111-101

Large Recommendations

RESIDENTIAL	RESIDENTIAL	RESIDENTIAL
COMMERCIAL	COMMERCIAL	COMMERCIAL
INDUSTRIAL	INDUSTRIAL	INDUSTRIAL

anotolia
Element
Glass
Decorative

14.76 in
37.5 cm

0.7 in
1.8 cm

A&D Board Outside

A&D Board Inside

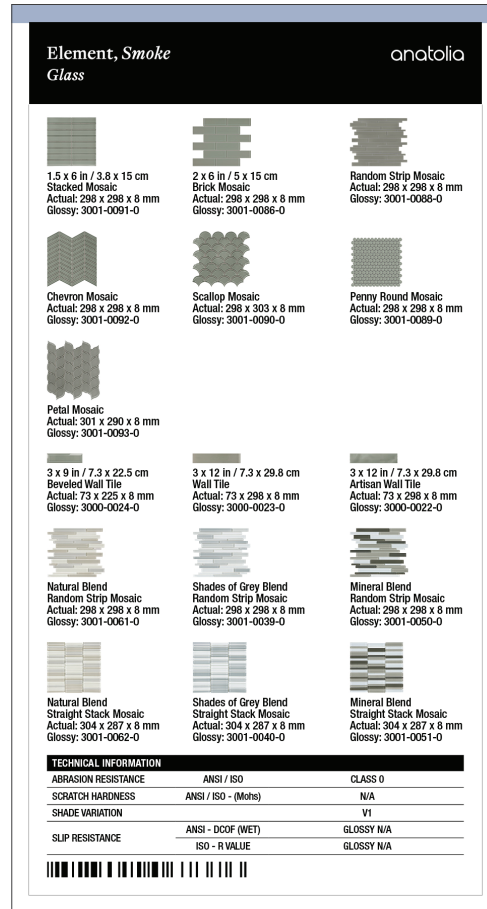
Marketing support, *Sample Chips*

Sample chips are an essential tool to bring mood boards to life and inspire a cohesive design space. They need to be relatively small and yet contain all of the critical design and collection specifications needed.

Anatolia has created a sample chip program that categorizes sample chips into color coded material types, includes a sample chip affixed to an elegant backer card and includes all of the key technical information and formats for that color on its back label. Anatolia also developed a premium sample chip carrying case to easily and beautifully store, organize, and carry sample chips to meetings.



Backer Board Size: 3.25 x 6 in / 8.25 x 15.25 cm

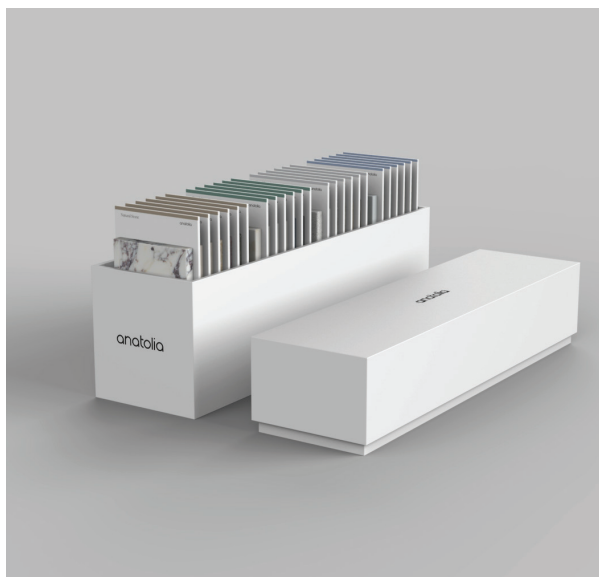


<i>Sample Chips</i>	ITEM CODE	UPC
Element Cloud Glossy Sample Chip	9902-1181-0	828492065785
Element Earth Glossy Sample Chip	9902-1182-0	828492065792
Element Ice Glossy Sample Chip	9902-1183-0	828492065808
Element Mist Glossy Sample Chip	9902-1184-0	828492065815

<i>Sample Chips</i>	ITEM CODE	UPC
Element Sand Glossy Sample Chip	9902-1185-0	828492065822
Element Shadow Glossy Sample Chip	9902-1186-0	828492065839
Element Skylight Glossy Sample Chip	9902-1187-0	828492065846
Element Smoke Glossy Sample Chip	9902-1188-0	828492065853

Marketing support, *Sample Chip Carrying Case*

Anatolia has developed a premium sample chip carrying case to easily and beautifully store, organize, and carry sample chips to meetings and for sample libraries. The case comes empty and can hold up to 24 sample chips.



ITEM DESCRIPTION	CONTENTS	ITEM CODE	UPC
4.1 x 14.8 x 7.5 in / 37.6 x 10.4 x 17.9 cm Sample Chip Carrying Case (Empty)	As per above	9902-1659-0	828492074879

Discover more at
anatolia.com