

Eramosa, *Glazed Porcelain*.
Merchandising



anatolia

Marketing support, A&D Boards

Today's A&D community and dealer network has very limited space in their design libraries and customer showrooms. Therefore, Anatolia wanted to reinvent the typical contractor board and architectural binder by combining them into one multipurpose and space efficient merchandising tool.

Once opened up the board acts like a traditional contractor board with an easy to hold handle with all the information needed to make design decisions. On the front are sizes and finishes at a glance along with color chips and room renders. On the back are all of the critical technical specifications needed to specify a design space along with room scenes for inspiration.

This unique to Anatolia A&D board sits on shelf folded with a book like spine that clearly identifies the collection name, material type and corresponding inspiration for the collection. When pulled out slightly, one can easily see the collection's colors at a glance.



A&D Board Outside



A&D Board Inside

A&D Board Sets			
	ITEM DESCRIPTION	ITEM CODE	UPC
Eramosa A&D Boards			
A&D Board for Colors Carbon, Ice, Clay	BOARD 1	9902-1321-0	828492068397
A&D Board for Colors Sand, Natural	BOARD 2	9902-1322-0	828492068403

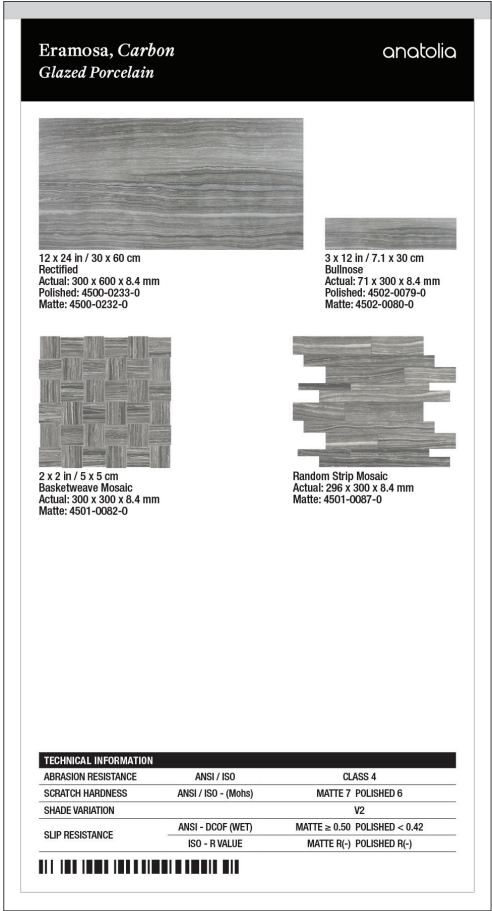
Marketing support, *Sample Chips*

Sample chips are an essential tool to bring mood boards to life and inspire a cohesive design space. They need to be relatively small and yet contain all of the critical design and collection specifications needed.

Anatolia has created a sample chip program that categorizes sample chips into color coded material types, includes a sample chip affixed to an elegant backer card and includes all of the key technical information and formats for that color on its back label. Anatolia also developed a premium sample chip carrying case to easily and beautifully store, organize, and carry sample chips to meetings.



Backer Board Size: 3.25 x 6 in / 8.25 x 15.25 cm

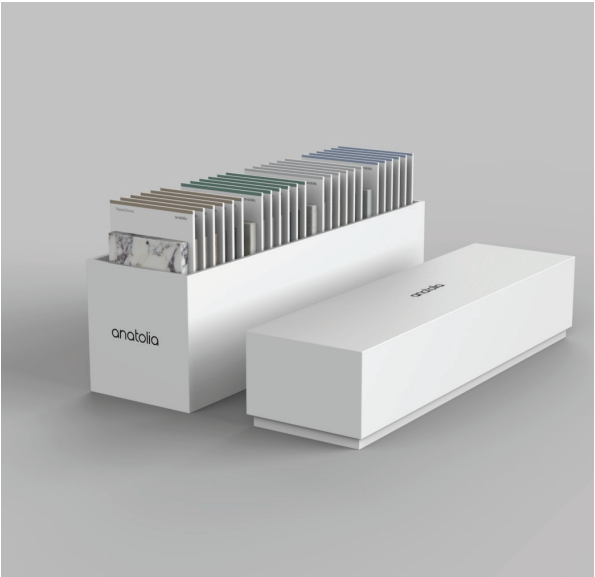
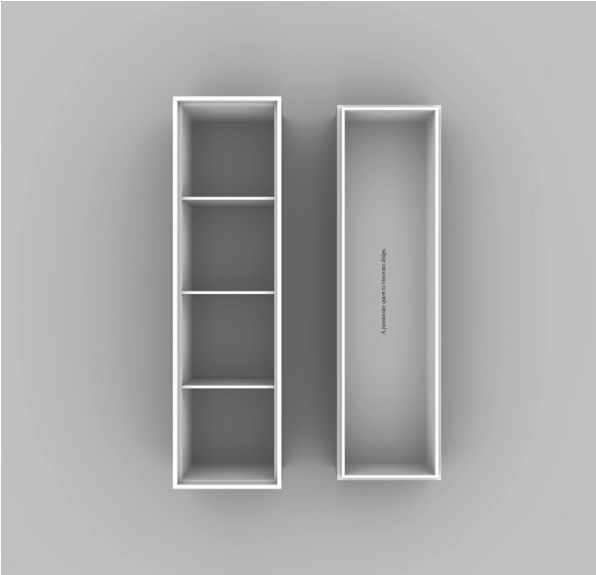


<i>Sample Chips</i>	ITEM CODE	UPC
Eramosa Carbon Matte Sample Chip	9902-1215-0	828492066126
Eramosa Clay Matte Sample Chip	9902-1217-0	828492066140
Eramosa Ice Matte Sample Chip	9902-1219-0	828492066164
Eramosa Sand Matte Sample Chip	9902-1223-0	828492066201

<i>Sample Chips</i>	ITEM CODE	UPC
Eramosa Carbon Polished Sample Chip	9902-1216-0	828492066133
Eramosa Clay Polished Sample Chip	9902-1218-0	828492066157
Eramosa Ice Polished Sample Chip	9902-1220-0	828492066171
Eramosa Sand Polished Sample Chip	9902-1224-0	828492066218

Marketing support, *Sample Chip Carrying Case*

Anatolia has developed a premium sample chip carrying case to easily and beautifully store, organize, and carry sample chips to meetings and for sample libraries. The case comes empty and can hold up to 24 sample chips.



ITEM DESCRIPTION	CONTENTS	ITEM CODE	UPC
4.1 x 14.8 x 7.5 in / 37.6 x 10.4 x 17.9 cm Sample Chip Carrying Case (Empty)	As per above	9902-1659-0	828492074879

Discover more at
anatolia.com