

Locale, *Glazed Porcelain*.
Merchandising

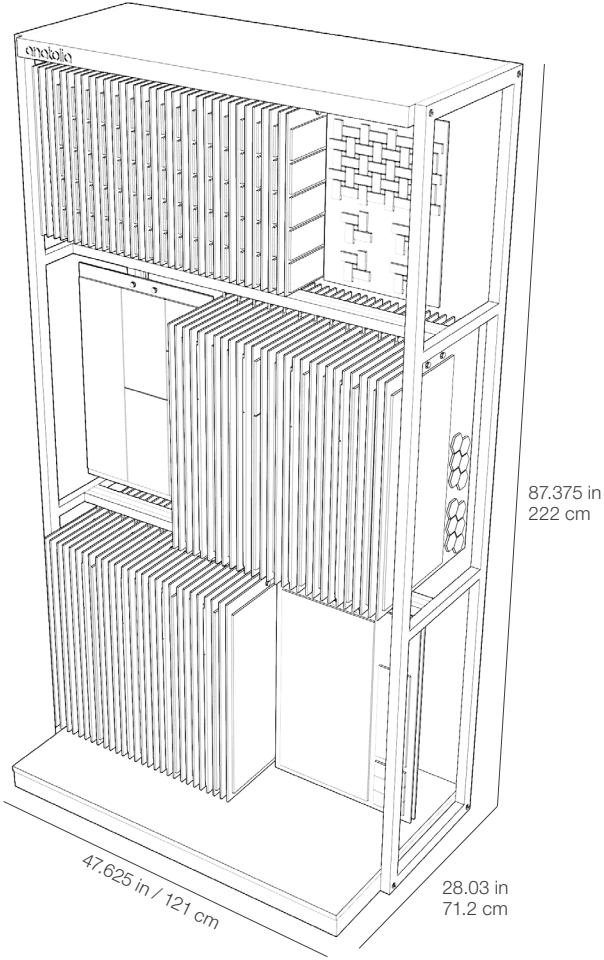


Classic Ceramic + Porcelain, *Designer Library Display*

Unveil the beauty of ceramic and porcelain collections with Anatolia's innovative Designer Library Display. Designed for versatility and sophistication, this modern display can hold up to 96 curated boards, showcasing each collection with the help of LED lighting and a sophisticated wood finish. It is tailored to deliver a high-quality presentation while offering detailed insights into the ceramic and porcelain options available.



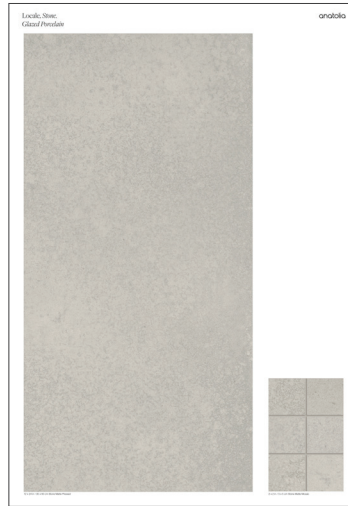
Classic Ceramic + Porcelain, *Designer Library Display at a glance*



Designer Library, *Display Boards at a Glance*



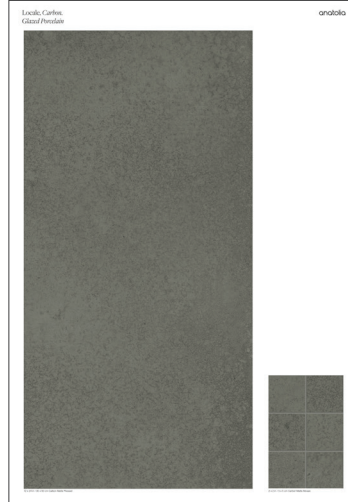
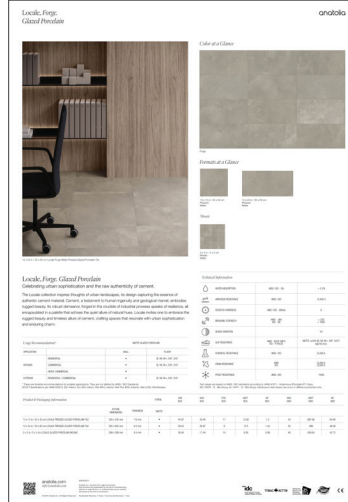
18 x 26 in / 46 x 66 cm Locale Glacier Board



18 x 26 in / 46 x 66 cm Locale Stone Board



18 x 26 in / 46 x 66 cm Locale Forge Board



18 x 26 in / 46 x 66 cm Locale Carbon Board



Marketing support, *A&D Boards*

Today's A&D community and dealer network has very limited space in their design libraries and customer showrooms. Therefore, Anatolia wanted to reinvent the typical contractor board and architectural binder by combining them into one multipurpose and space efficient merchandising tool.

Once opened up the board acts like a traditional contractor board with an easy to hold handle with all the information needed to make design decisions. On the front are sizes and finishes at a glance along with color chips and room renders. On the back are all of the critical technical specifications needed to specify a design space along with room scenes for inspiration.

This unique to Anatolia A&D board sits on shelf folded with a book like spine that clearly identifies the collection name, material type and corresponding inspiration for the collection. When pulled out slightly, one can easily see the collection's colors at a glance.



A&D Board Outside



A&D Board Inside

<i>A&D Board</i>	ITEM DESCRIPTION	ITEM CODE	UPC
A&D Board for Colors Carbon, Forge, Stone, and Glacier	Locale A&D Board	9902-1959-0	828492080467

A&D Board, *Dimensions*

12 in / 30.5 cm

anotolia

Locale
Glazed Porcelain
Contemporary Inspiration

Celebrating urban sophistication and the raw authenticity of cement.

Colors at a Glance

anotolia **Locale** *Glazed Porcelain* Contemporary Inspiration

14.76 in / 37.5 cm

12 x 24 in / 30 x 60 cm Locale Forge Matte Pressed Glazed Porcelain Tile

Locale, *Glazed Porcelain*
Celebrating urban sophistication and the raw authenticity of cement.

The Locale collection inspires thoughts of urban landscapes, its design capturing the essence of authentic cement material. Cement, a testament to human ingenuity and geological marvel, embodies rugged beauty, its robust character, forged in the crucible of industrial processes, speaks of resilience, all encapsulated in a palette that echoes the quiet allure of natural hues. Locale invites one to embrace the rugged beauty and timeless allure of cement, crafting spaces that resonate with urban sophistication and enduring charm.

Technical Information

WATER ABSORPTION	ANSI A101 - IV	<0.5%
ACID RESISTANCE	ANSI 101	CLASS 4
STAIN RESISTANCE	ANSI 101 - STAIN 1	1
SCRATCH RESISTANCE	ANSI 101 - STAIN 1	1
IMPACT RESISTANCE	ANSI 101 - STAIN 1	1
SLIP RESISTANCE	ANSI A101 - STAIN 1	1
CHEMICAL RESISTANCE	ANSI 101	CLASS 4
STAIN RESISTANCE	ANSI 101	CLASS 4
FROST RESISTANCE	ANSI 101	CLASS 4

Edge Recommendations*

APPLICATION	WALL	FLUSH
RESIDENTIAL	•	•
COMMERCIAL	•	•
INDUSTRIAL	•	•
OUTDOOR	•	•

Product Packaging Information

ACTUAL DIMENSIONS	TOLERANCE	NET WT	GROSS WT	NET WT	GROSS WT	NET WT	GROSS WT	NET WT	GROSS WT	NET WT	GROSS WT
12 x 24 in (30 x 60 cm) LOOSE PRESS GLAZED PORCELAIN TILE	±0.1 mm	7.6 mm	4.80-10.00 g	4.80-10.00 g	4.80-10.00 g	4.80-10.00 g	4.80-10.00 g	4.80-10.00 g	4.80-10.00 g	4.80-10.00 g	4.80-10.00 g
12 x 24 in (30 x 60 cm) LOOSE PRESS GLAZED PORCELAIN TILE	±0.1 mm	8.4 mm	4.80-10.00 g	4.80-10.00 g	4.80-10.00 g	4.80-10.00 g	4.80-10.00 g	4.80-10.00 g	4.80-10.00 g	4.80-10.00 g	4.80-10.00 g
24 x 24 in (60 x 60 cm) LOOSE PRESS GLAZED PORCELAIN TILE	±0.1 mm	8.4 mm	4.80-10.00 g	4.80-10.00 g	4.80-10.00 g	4.80-10.00 g	4.80-10.00 g	4.80-10.00 g	4.80-10.00 g	4.80-10.00 g	4.80-10.00 g

anotolia.com
info@anotolia.com

Board 1 of 1

A&D Board Outside

Locale
Glazed Porcelain
Contemporary Inspiration

anotolia

0.7 in / 1.8 cm

Formats at a Glance

Glacier
Matte

Stone
Matte

Forge
Matte

Carbon
Matte

Fully Open:
21.45 in / 54.5 cm

12 x 24 in / 30 x 60 cm Locale Forge Matte Pressed Glazed Porcelain Tile

A&D Board Inside

LOCALE, GLAZED PORCELAIN 6

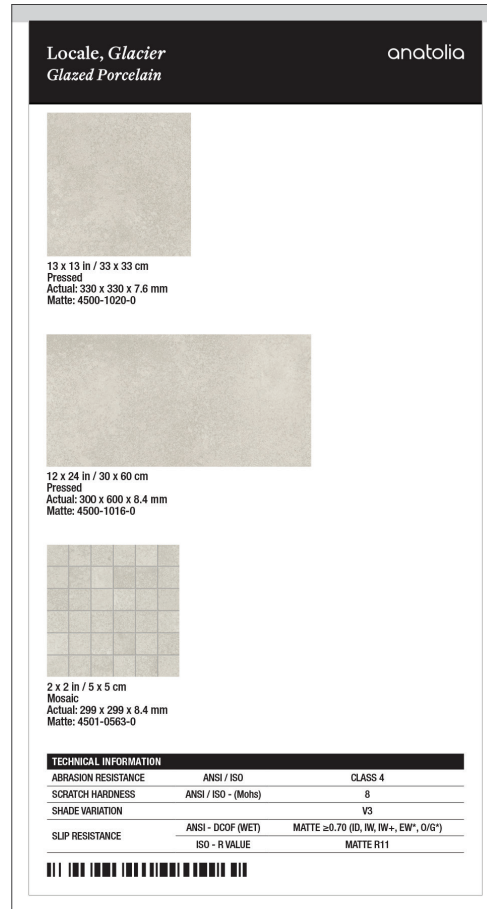
Marketing support, *Sample Chips*

Sample chips are an essential tool to bring mood boards to life and inspire a cohesive design space. They need to be relatively small and yet contain all of the critical design and collection specifications needed.

Anatolia has created a sample chip program that categorizes sample chips into color coded material types, includes a sample chip affixed to an elegant backer card and includes all of the key technical information and formats for that color on its back label. Anatolia also developed a premium sample chip carrying case to easily and beautifully store, organize, and carry sample chips to meetings.



Backer Board Size: 3.25 x 6 in / 8.25 x 15.25 cm

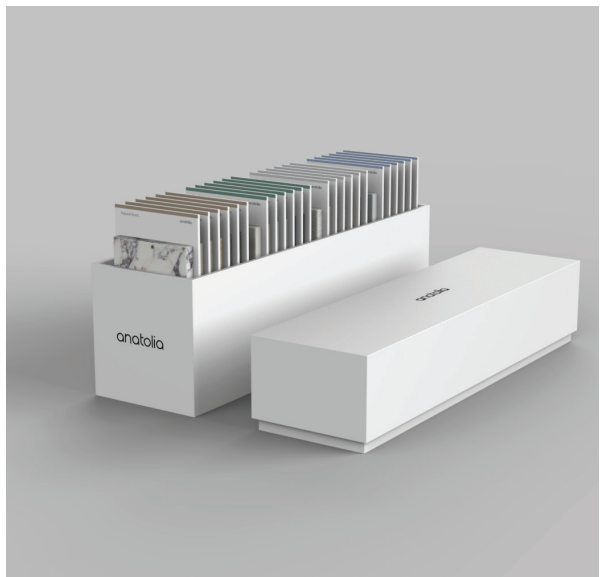


Sample Chips

	ITEM CODE	UPC
Locale Carbon Matte Sample Chip	9902-1988-0	828492080757
Locale Forge Matte Sample Chip	9902-1989-0	828492080764
Locale Stone Matte Sample Chip	9902-1990-0	828492080771
Locale Glacier Matte Sample Chip	9902-1991-0	828492080788

Marketing support, *Sample Chip Carrying Case*

Anatolia has developed a premium sample chip carrying case to easily and beautifully store, organize, and carry sample chips to meetings and for sample libraries. The case comes empty and can hold up to 24 sample chips.



ITEM DESCRIPTION	CONTENTS	ITEM CODE	UPC
4.1 x 14.8 x 7.5 in / 37.6 x 10.4 x 17.9 cm Sample Chip Carrying Case (Empty)	As per above	9902-1659-0	828492074879

Discover more at
anatolia.com