

Marlow, *Glazed Ceramic.*
Merchandising



anatolia

Marketing support, *Table Top Display*

This collection's beauty is brought to life in a table top display that features the tiles in the collection in compact and efficient display board sets. The display board sets feature various tile formats on the front of the board along with refined room scenes, tile variations and technical specifications on the back. Furthermore, great care has been taken to maximize display space efficiency while providing the most motivating presentation of the collection.



Marlow + Obsidian Mix, *Table Top Display at a glance*



Side angle view of display boards accentuates the beauty and impeccable quality of the designs.

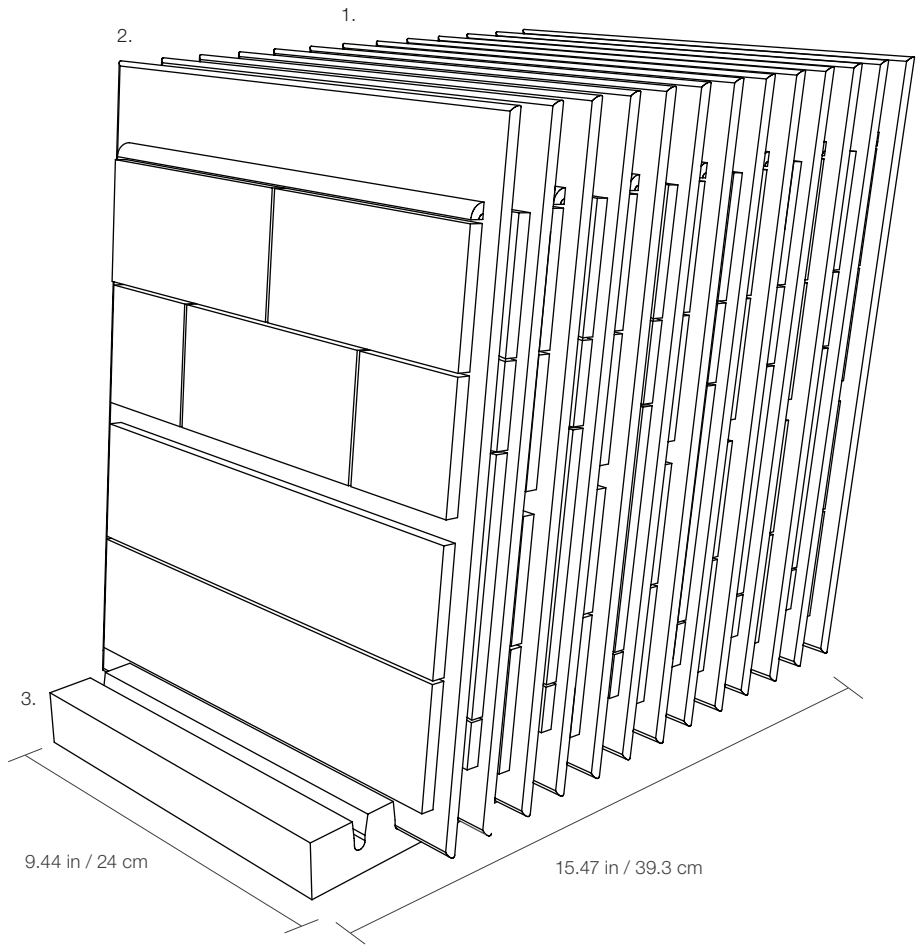


Marlow + Obsidian Mix, *Table Top Display Kit*

Key specifications and item codes

ITEM DESCRIPTION	CONTENTS	ITEM CODE
MARLOW + OBSIDIAN DISPLAY KIT	2 DISPLAY BOARD SETS (12 BOARDS IN TOTAL), 1 DISPLAY BASE	9901-0081-0

1. Obsidian Backsplash Display Board Set (6 total in total)
2. Marlow Backsplash Display Board Set (6 boards in total)
3. 15.5 x 9.5 in / 39.3 x 24 x 4.5 cm MDF Display Base, 12 Slots



Marketing support, *A&D Board*

Today's A&D community and dealer network has very limited space in their design libraries and customer showrooms. Therefore, Anatolia wanted to reinvent the typical contractor board and architectural binder by combining them into one multipurpose and space efficient merchandising tool.

Once opened up the board acts like a traditional contractor board with an easy to hold handle with all the information needed to make design decisions. On the front are sizes and finishes at a glance along with color chips and room renders. On the back are all of the critical technical specifications needed to specify a design space along with room scenes for inspiration.

This unique to Anatolia A&D board sits on shelf folded with a book like spine that clearly identifies the collection name, material type and corresponding inspiration for the collection. When pulled out slightly, one can easily see the collection's colors at a glance.



A&D Board Outside



A&D Board Inside

<i>A&D Board</i>	ITEM DESCRIPTION	ITEM CODE	UPC
A&D Board for Colors Cloud, Desert, Earth, Mist, Smoke, Tide	Marlow A&D Board	9902-1361-0	828492066744

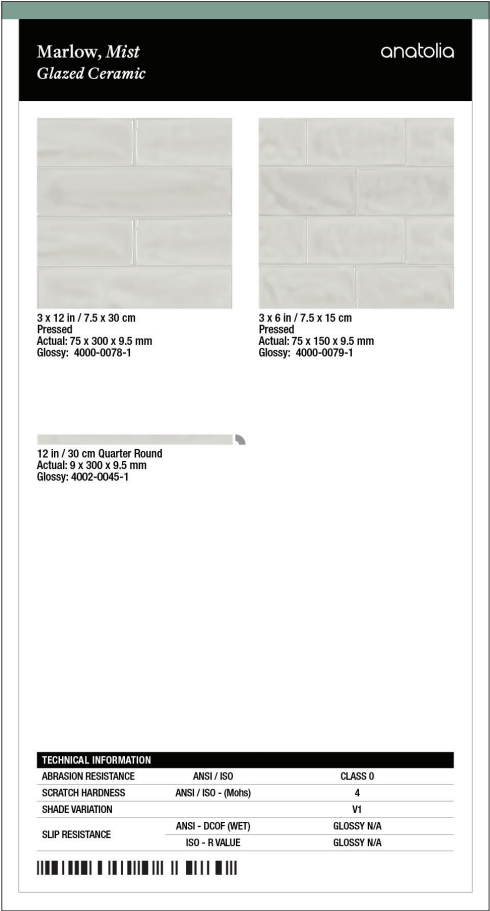
Marketing support, *Sample Chips*

Sample chips are an essential tool to bring mood boards to life and inspire a cohesive design space. They need to be relatively small and yet contain all of the critical design and collection specifications needed.

Anatolia has created a sample chip program that categorizes sample chips into color coded material types, includes a sample chip affixed to an elegant backer card and includes all of the key technical information and formats for that color on its back label. Anatolia also developed a premium sample chip carrying case to easily and beautifully store, organize, and carry sample chips to meetings.



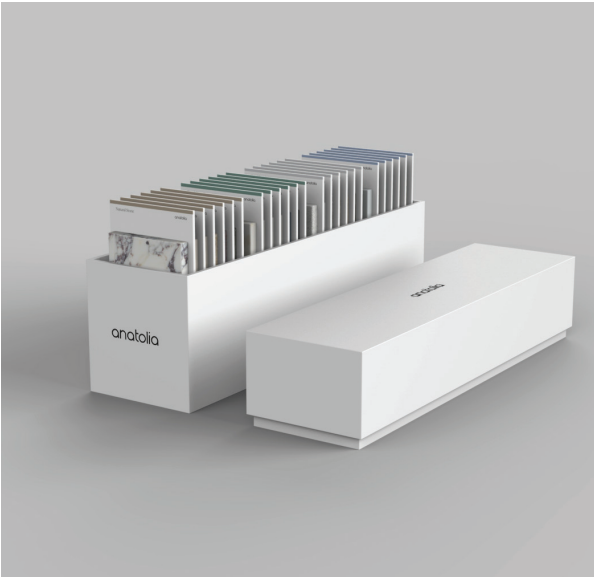
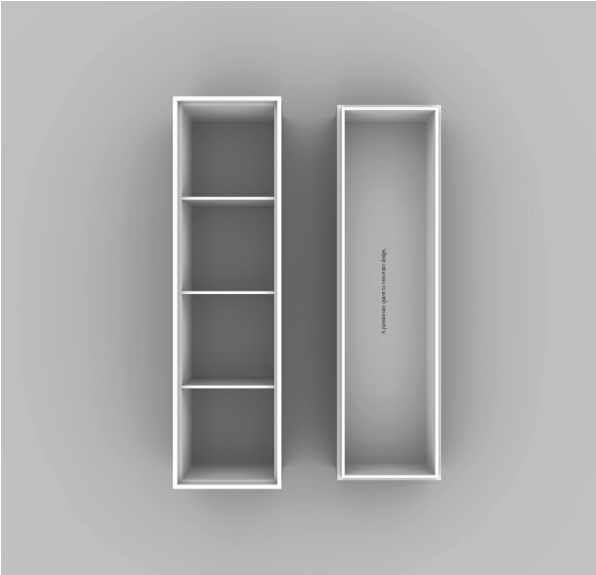
Backer Board Size: 3.25 x 6 in / 8.25 x 15.25 cm



<i>Sample Chips</i>	ITEM CODE	UPC
Marlow Cloud Glossy Sample Chip	9902-1098-0	828492064955
Marlow Cloud Matte Sample Chip	9902-1099-0	828492064962
Marlow Desert Glossy Sample Chip	9902-1100-0	828492064979
Marlow Earth Glossy Sample Chip	9902-1101-0	828492064986
Marlow Mist Glossy Sample Chip	9902-1102-0	828492064993
Marlow Smoke Glossy Sample Chip	9902-1103-0	828492065006
Marlow Tide Glossy Sample Chip	9902-1104-0	828492065013

Marketing support, *Sample Chip Carrying Case*

Anatolia has developed a premium sample chip carrying case to easily and beautifully store, organize, and carry sample chips to meetings and for sample libraries. The case comes empty and can hold up to 24 sample chips.



ITEM DESCRIPTION	CONTENTS	ITEM CODE	UPC
4.1 x 14.8 x 7.5 in / 37.6 x 10.4 x 17.9 cm Sample Chip Carrying Case (Empty)	As per above	9902-1659-0	828492074879

Discover more at
anatolia.com