

Marmiline, *Engineered Stone*.

A dynamic and universal solution, designed to perfectly complete any space.

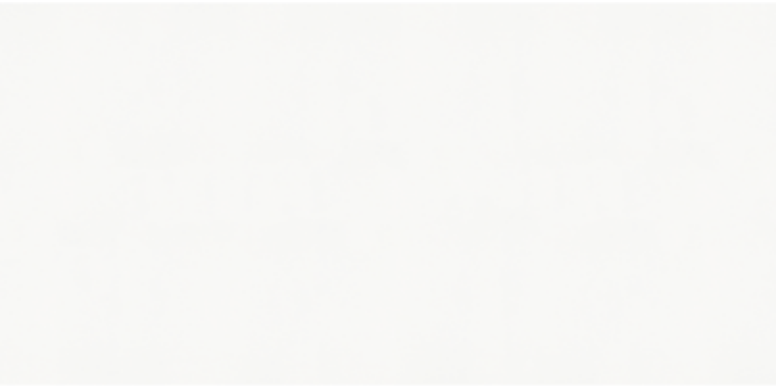


anatolia

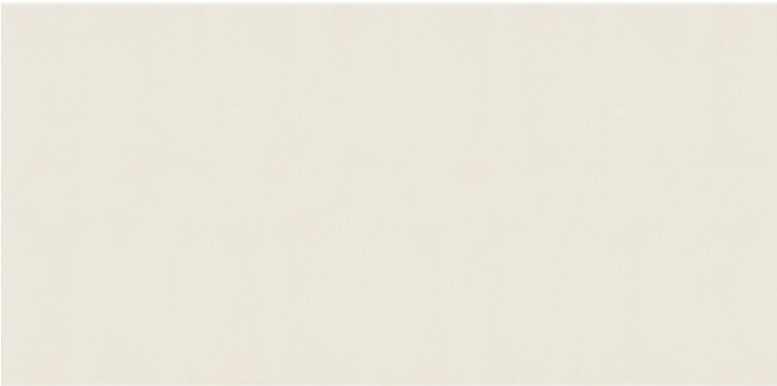
Marmiline, *Engineered Stone*.

The perfect fit for bathrooms,  
showers and doorways.

Colors at a glance



Snow



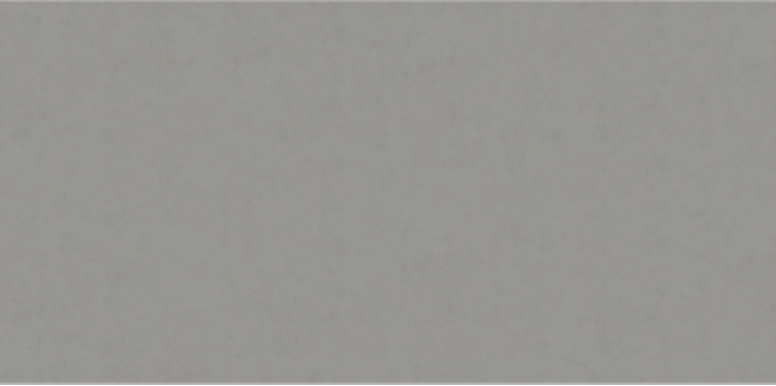
Ivory



Pearl

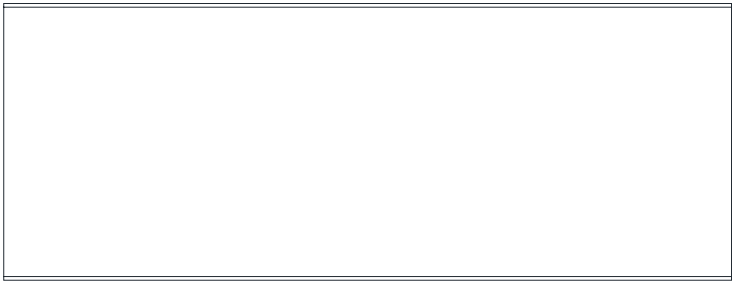


Ash



Shadow

Formats and finishes at a glance



18 x 47.2 in / 45.7 x 119.8 cm  
Bench



6 x 94.5 in / 15.2 x 240 cm  
Sill



6 x 76 in / 15.2 x 193 cm  
Sill



4 x 36 in / 10.2 x 91.4 cm  
Threshold



2 x 36 in / 5.1 x 91.4 cm  
Threshold



8.9 in / 22.6 cm  
Corner Shelf

Marmiline, *Snow*



18 x 47.2 in / 45.7 x 119.8 cm  
Bench  
Polished 5503-0000-0



6 x 94.5 in / 15.2 x 240 cm  
Sill  
Polished 5502-0005-0



6 x 76 in / 15.2 x 193 cm  
Sill  
Polished 5502-0000-0



4 x 36 in / 10.2 x 91.4 cm  
Threshold  
Polished 5502-0015-0



2 x 36 in / 5.1 x 91.4 cm  
Threshold  
Polished 5502-0010-0



8.9 in / 22.6 cm  
Corner Shelf  
Polished 5503-0005-0



18 x 47.2 in / 45.7 x 119.8 cm Marmiline Ivory Polished Engineered Stone Bench  
MARMILINE, ENGINEERED STONE     7

Marmiline, *Ivory*



18 x 47.2 in / 45.7 x 119.8 cm  
Bench  
Polished 5503-0001-0



6 x 94.5 in / 15.2 x 240 cm  
Sill  
Polished 5502-0006-0



6 x 76 in / 15.2 x 193 cm  
Sill  
Polished 5502-0001-0



4 x 36 in / 10.2 x 91.4 cm  
Threshold  
Polished 5502-0016-0



2 x 36 in / 5.1 x 91.4 cm  
Threshold  
Polished 5502-0011-0



8.9 in / 22.6 cm  
Corner Shelf  
Polished 5503-0006-0

Marmiline, *Pearl*



18 x 47.2 in / 45.7 x 119.8 cm  
Bench  
Polished 5503-0003-0



6 x 94.5 in / 15.2 x 240 cm  
Sill  
Polished 5502-0008-0



6 x 76 in / 15.2 x 193 cm  
Sill  
Polished 5502-0003-0



4 x 36 in / 10.2 x 91.4 cm  
Threshold  
Polished 5502-0018-0



2 x 36 in / 5.1 x 91.4 cm  
Threshold  
Polished 5502-0013-0



8.9 in / 22.6 cm  
Corner Shelf  
Polished 5503-0008-0

Marmiline, *Ash*



18 x 47.2 in / 45.7 x 119.8 cm  
Bench  
Polished 5503-0002-0



6 x 94.5 in / 15.2 x 240 cm  
Sill  
Polished 5502-0007-0



6 x 76 in / 15.2 x 193 cm  
Sill  
Polished 5502-0002-0



4 x 36 in / 10.2 x 91.4 cm  
Threshold  
Polished 5502-0017-0



2 x 36 in / 5.1 x 91.4 cm  
Threshold  
Polished 5502-0012-0



8.9 in / 22.6 cm  
Corner Shelf  
Polished 5503-0007-0

Marmiline, *Shadow*



18 x 47.2 in / 45.7 x 119.8 cm  
Bench  
Polished 5503-0004-0



6 x 94.5 in / 15.2 x 240 cm  
Sill  
Polished 5502-0009-0



6 x 76 in / 15.2 x 193 cm  
Sill  
Polished 5502-0004-0



4 x 36 in / 10.2 x 91.4 cm  
Threshold  
Polished 5502-0019-0



2 x 36 in / 5.1 x 91.4 cm  
Threshold  
Polished 5502-0014-0



8.9 in / 22.6 cm  
Corner Shelf  
Polished 5503-0009-0

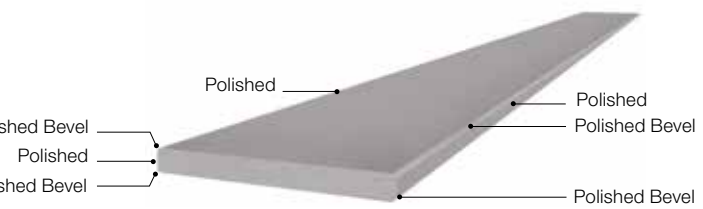


18 x 47.2 in / 45.7 x 119.8 cm Marmiline Ivory Polished Engineered Stone Bench





Marmiline, *Engineered Stone Sill*



*Sealing:*  
All engineered stone must be sealed using a high-quality impregnating sealer prior to installation to minimize staining following the manufacturer’s instructions, and reapply the protective plastic to prevent any damage during installation. It is strongly recommended to seal the engineered stone again after installation to reseal any areas that may have been affected during the installation process. Note that sealing will not prevent staining and etching – it is important that all spills are wiped immediately to avoid setting into the material.

*General Care & Maintenance:*

- Wipe up any spills on the tile immediately and clean the area using a damp cloth or sponge.
- Inspect all product prior to installation by removing plastic for any color/ shade variation and verifying size, thickness, bevel, and polishing defects.
- Seal the engineered stone using a high quality impregnating sealer and re-apply plastic covering onto stone to protect product during installation.
- Do not expose engineered stone to any strong chemicals and solvents, or any acidic or alkali products.
- Do not expose engineered stone to any dyes or color-treating products.
- Do not expose engineered stone to products containing any oils or powders.
- Daily cleaning: use a soft cloth with warm water and small amount of mild PH neutral non-pigmented cleaner (non-abrasive and does not contain bleach).
- Do not use abrasives, steel wool, or any products that may scratch the surface.
- For light stains, gently apply rubbing alcohol to the stain. Rinse and wipe dry. Reseal after this method.

- For heavier stains, soak a cloth with a 50/50 mix of bleach and water. Leave on top of the stain for 10 minutes, but no longer than 30 minutes. Rinse and wipe dry. Reseal after this method.
- Do not expose engineered stone to sudden and rapid temperature changes.
- Note: engineered stone products are not recommended for steam showers.
- Contact a professional stone restoration company to treat any engineered stone with stubborn stains and/or etching

*How to install:*

1. Cut the engineered stone (face side up) to the required length with a circular saw, or wet saw.
2. Clean surface thoroughly prior to adhering the threshold to the shower curb.
3. Seal the engineered stone using a high quality impregnating sealer as noted above, and reapply the protective plastic to prevent any damage during installation.
4. Adhere threshold to curb using a modified polymer thinset.
5. Build up outside edge of curb with thinset to create a ¼” slope towards the inside of the shower for proper drainage when using as a shower sill.
6. Caulk at the walls and under the sill using silicone caulking to prevent water leaks.
7. Refer to the TCNA (Tile Council of North America) Handbook for further information regarding installation requirements at <http://www.tcnatile.com/>

NOTE: NO CLAIMS WILL BE ACCEPTED AFTER THE MATERIAL HAS BEEN INSTALLED.

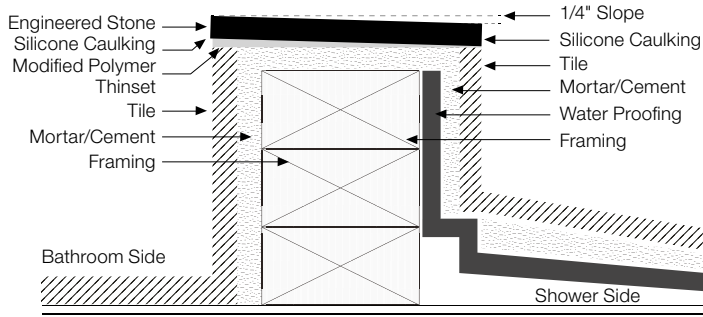
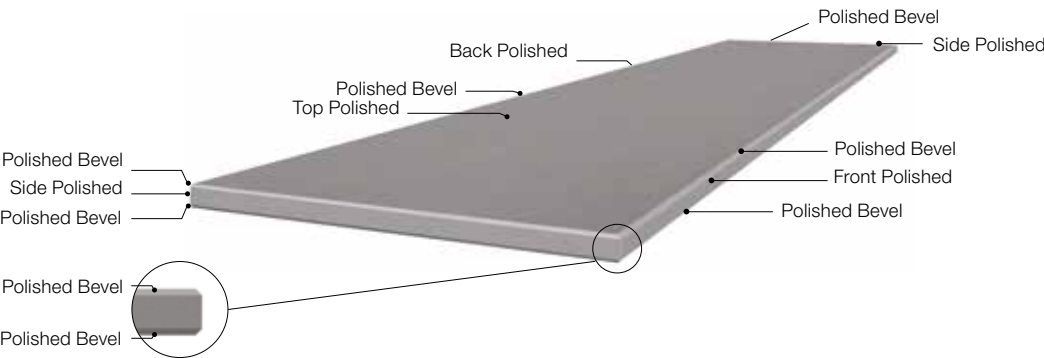


Fig.1 Installation Diagram

Marmiline, *Engineered Stone Bench*



*Sealing:*  
All engineered stone must be sealed using a high-quality impregnating sealer prior to installation to minimize staining following the manufacturer’s instructions, and reapply the protective plastic to prevent any damage during installation. It is strongly recommended to seal the engineered stone again after installation to reseal any areas that may have been affected during the installation process. Note that sealing will not prevent staining and etching – it is important that all spills are wiped immediately to avoid setting into the material.

*General Care & Maintenance:*

- Wipe up any spills on the tile immediately and clean the area using a damp cloth or sponge.
- Inspect all product prior to installation by removing plastic for any color/ shade variation and verifying size, thickness, bevel, and polishing defects.
- Seal the engineered stone using a high quality impregnating sealer and re-apply plastic covering onto stone to protect product during installation.
- Do not expose engineered stone to any strong chemicals and solvents, or any acidic or alkali products.
- Do not expose engineered stone to any dyes or color-treating products.
- Do not expose engineered stone to products containing any oils or powders.
- Daily cleaning: use a soft cloth with warm water and small amount of mild PH neutral non-pigmented cleaner (non-abrasive and does not contain bleach).
- Do not use abrasives, steel wool, or any products that may scratch the surface.
- For light stains, gently apply rubbing alcohol to the stain. Rinse and wipe dry. Reseal after this method.

- For heavier stains, soak a cloth with a 50/50 mix of bleach and water. Leave on top of the stain for 10 minutes, but no longer than 30 minutes. Rinse and wipe dry. Reseal after this method.
- Do not expose engineered stone to sudden and rapid temperature changes.
- Note: engineered stone products are not recommended for steam showers.
- Contact a professional stone restoration company to treat any engineered stone with stubborn stains and/or etching.

*How to install:*

1. Cut the engineered stone (face side up) to the required length with a circular saw, or wet saw.
2. Clean surface thoroughly prior to adhering the threshold to the shower curb.
3. Seal the engineered stone using a high quality impregnating sealer as noted above, and reapply the protective plastic to prevent any damage during installation.
4. Adhere threshold to curb using a modified polymer thinset.
5. Build up outside edge of curb with thinset to create a ¼” slope towards the inside of the shower for proper drainage when using as a shower sill.
6. Caulk at the walls and under the sill using silicone caulking to prevent water leaks.
7. Refer to the TCNA (Tile Council of North America) Handbook for further information regarding installation requirements at <http://www.tcnatile.com/>

NOTE: NO CLAIMS WILL BE ACCEPTED AFTER THE MATERIAL HAS BEEN INSTALLED.

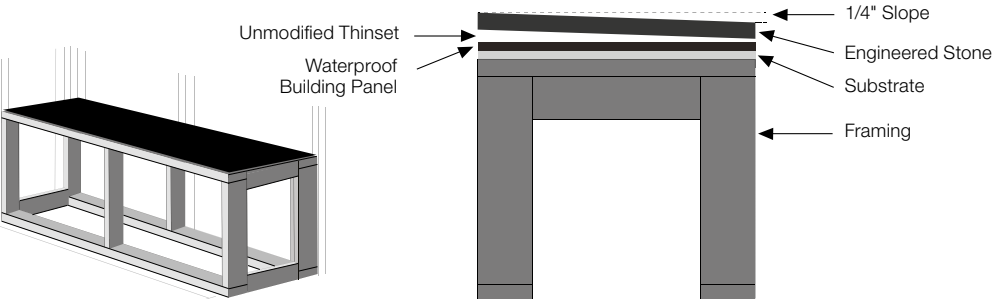
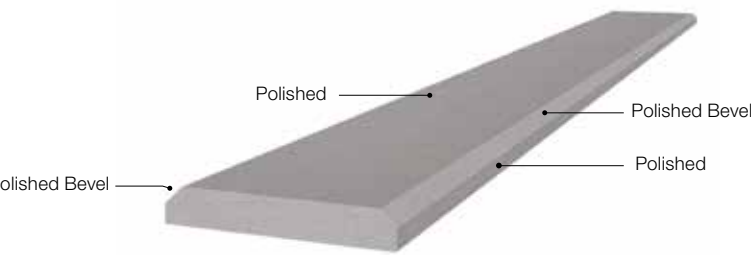


Fig.1 Installation Diagram



Marmiline, *Engineered Stone Threshold*



*Sealing:*  
All engineered stone must be sealed using a high-quality impregnating sealer prior to installation to minimize staining following the manufacturer’s instructions, and reapply the protective plastic to prevent any damage during installation. It is strongly recommended to seal the engineered stone again after installation to reseal any areas that may have been affected during the installation process. Note that sealing will not prevent staining and etching – it is important that all spills are wiped immediately to avoid setting into the material.

*General Care & Maintenance:*  
Wipe up any spills on the tile immediately and clean the area using a damp cloth or sponge.

- Inspect all product prior to installation by removing plastic for any color/ shade variation and verifying size, thickness, bevel, and polishing defects.
- Seal the engineered stone using a high quality impregnating sealer and re-apply plastic covering onto stone to protect product during installation.
- Do not expose engineered stone to any strong chemicals and solvents, or any acidic or alkali products.
- Do not expose engineered stone to any dyes or color-treating products
- Do not expose engineered stone to products containing any oils or powders.
- Daily cleaning: use a soft cloth with warm water and small amount of mild PH neutral non-pigmented cleaner (non-abrasive and does not contain bleach).
- Do not use abrasives, steel wool, or any products that may scratch the surface.
- For light stains, gently apply rubbing alcohol to the stain. Rinse and wipe dry. Reseal after this method.

- For heavier stains, soak a cloth with a 50/50 mix of bleach and water. Leave on top of the stain for 10 minutes, but no longer than 30 minutes. Rinse and wipe dry. Reseal after this method.
- Do not expose engineered stone to sudden and rapid temperature changes.
- Avoid aggressive and heavy foot traffic to the engineered stone.
- Note: engineered stone products are not recommended for steam showers.
- Contact a professional stone restoration company to treat any engineered stone with stubborn stains and/or etching.

*General Care & Maintenance:*

*How to install:*

1. Cut the engineered stone (face side up) to the required length with a circular saw, or wet saw.
2. Clean surface thoroughly prior to adhering the threshold to the shower curb.
3. Seal the engineered stone using a high quality impregnating sealer as noted above, and reapply the protective plastic to prevent any damage during installation.
4. Adhere threshold to curb using a modified polymer thinset.
5. Build up outside edge of curb with thinset to create a ¼” slope towards the inside of the shower for proper drainage when using as a shower sill.
6. Caulk at the walls and under the sill using silicone caulking to prevent water leaks.
7. Refer to the TCNA (Tile Council of North America) Handbook for further information regarding installation requirements at <http://www.tcnatile.com/>

NOTE: NO CLAIMS WILL BE ACCEPTED AFTER THE MATERIAL HAS BEEN INSTALLED.

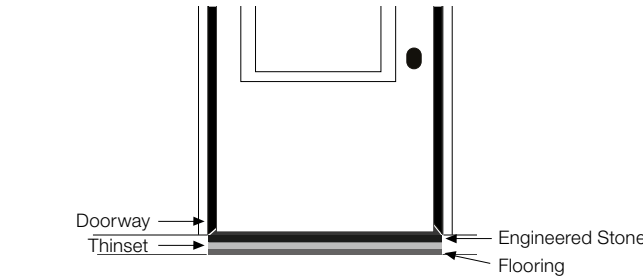


Fig.1 Installation Diagram

Marmiline, *Engineered Stone Round Corner Shelf*



*Sealing:*  
All engineered stone must be sealed using a high-quality impregnating sealer prior to installation to minimize staining following the manufacturer’s instructions. It is strongly recommended to seal the engineered stone again after installation to reseal any areas that may have been affected during the installation process. Note that sealing will not prevent staining and etching – it is important that all spills are wiped immediately to avoid setting into the material.

*General Care & Maintenance:*

*How to install:*

1. Clean the area of installation by sweeping or vacuuming thoroughly, ensuring that no dirt or debris is in the area.
2. Cut the engineered stone (face side up) to the required length with a circular saw, or wet saw.
3. Clean surface thoroughly prior to adhering the threshold.
4. Seal the engineered stone using a high-quality impregnating sealer as noted above, and reapply the protective plastic to prevent any damage during installation.
5. Spread a thin layer of thinset directly onto area of installation, using a ¼” inch notched trowel to spread evenly.
6. Adhere threshold to installation area onto thinset, ensuring that it is lined up correctly before pushing firmly to secure.
7. Wait for 72 hours to allow the thinset to cure and bond to the engineered stone.
8. Refer to the TCNA (Tile Council of North America) Handbook. For further information regarding installation requirements at <http://www.tcnatile.com>.

NOTE: NO CLAIMS WILL BE ACCEPTED AFTER THE MATERIAL HAS BEEN INSTALLED.

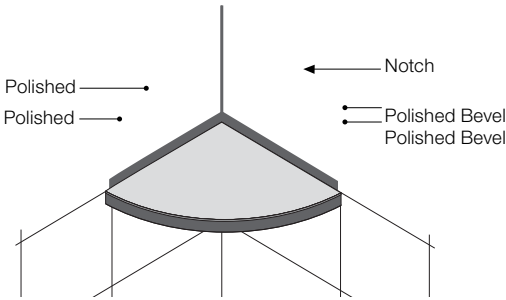


Fig.1 Installation Diagram

*The Anatolia difference*  
Unmatched elegance and unparalleled perfection.

Anatolia reinvents shapes and design compositions through refined color palettes, innovative graphical refinements and creative reinterpretations of traditional, cultural and trend led inspirations. Meticulous care is taken to enhance a product's formation through graphical and technical improvements at every step of the development and execution process. This leads to the most exquisite and discerning tile collections.





*Technical Performance*  
Avant-garde design and attention to detail.

The goal of Anatolia's design department was to create the utmost elegant and sophisticated product, a perfect blend of functionality and style. New technical aspects, innovative shapes, and a new color palette were designed to represent the vibrant and lively nature of metropolitan city life, inspired by its culture and history.

# The World of Anatolia

*We are a constellation of people and places. Get in touch.*

CANADA  
TORONTO HEAD OFFICE,  
SHOWROOM AND DISTRIBUTION  
CENTER

8300 Huntington Road  
Vaughan, ON, L4H 4Z6  
Canada

info@anatolia.com

Tel: +1 905 771 3800  
Toll free tel: 1 877 311 3434  
Fax: +1 905 771 6300  
Fax: +1 866 324 1838

USA  
SAVANNAH OFFICE, SHOWROOM  
AND DISTRIBUTION CENTER  
Anatolia (USA) Inc.  
Tel: +1 877 311 3434

SAVANNAH WAREHOUSE #1  
202 International Trade Pkwy  
Port Wentworth, GA, 31407  
USA  
Tel: +1 912 438 5167

SAVANNAH WAREHOUSE #2  
250 International Trade Pkwy  
Port Wentworth, GA, 31407  
USA  
Tel: +1 912 438 5167

TURKIYE  
IZMIR OFFICE, SHOWROOM  
AND DISTRIBUTION CENTRE

Aliağa Organize Sanayi Bölgesi  
Çoraklar Mah. 5000 Sk. No: 34  
35800 Aliağa, İzmir,  
Türkiye  
Tel: +90 232 520 7300

REGIONAL OFFICES  
TURKIYE  
Oguzhan Mah. Hoca Ahmet Yesevi Cad.  
Ada Plaza No:7 Kat:3 Daire:19  
15300 Bucak, Burdur,  
Türkiye

CHINA  
Room 517 Yi Shu Da Lou Ji Hua 4 Road  
Chan Cheng District, Foshan City  
Guang Dong Province, 528000  
China

INDIA  
206 - Pacific Business Park  
Mahendra Nagar (Part)  
8/A - National High Way  
Morbi, Gujarat, 363642  
India

USA  
Anatolia (USA) Inc.  
131 Crosslake Park Dr., Suite 203  
 Mooresville, NC, 28117  
USA  
Tel: +1 877 311 3434

## Credits

ART DIRECTION  
AND GRAPHIC DESIGN  
Juma

## Partnerships and Associations



*Discover more at*  
anatolia.com

