

Plata, *Glazed Porcelain.*
Merchandising



anatolia

Marketing support, *Floor Display*

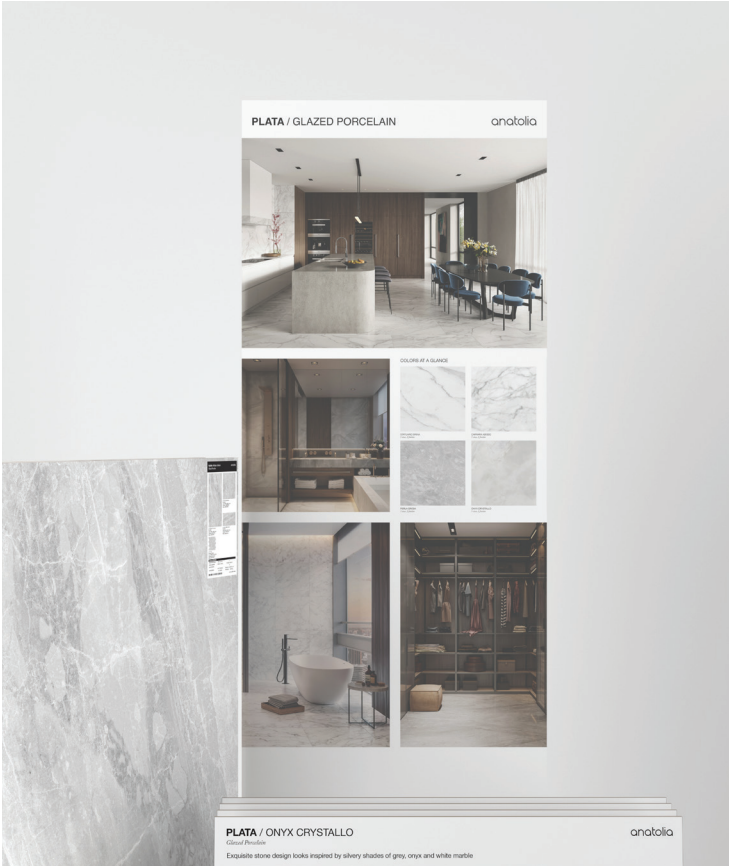
This collection's beauty is brought to life in a floor display that features the tiles in the collection, display board sets and an inspirational branding panel. The large format tiles on the left allow customers to experience Anatolia's ultimate design definition and depth of color and shade rendition. The display board sets on the right feature various tile formats and finishes on the front of the board along with refined room scenes, tile variations and technical specifications on the back. The branding panel at the back provides a variety of elegant and inspirational room scenes along with the colors included within the collection. Furthermore, great care has been taken to maximize display space efficiency while providing the most motivating presentation of the collection.



Plata, *Floor Display at a glance*



Side angle view of display boards accentuates the beauty and impeccable quality of the designs.



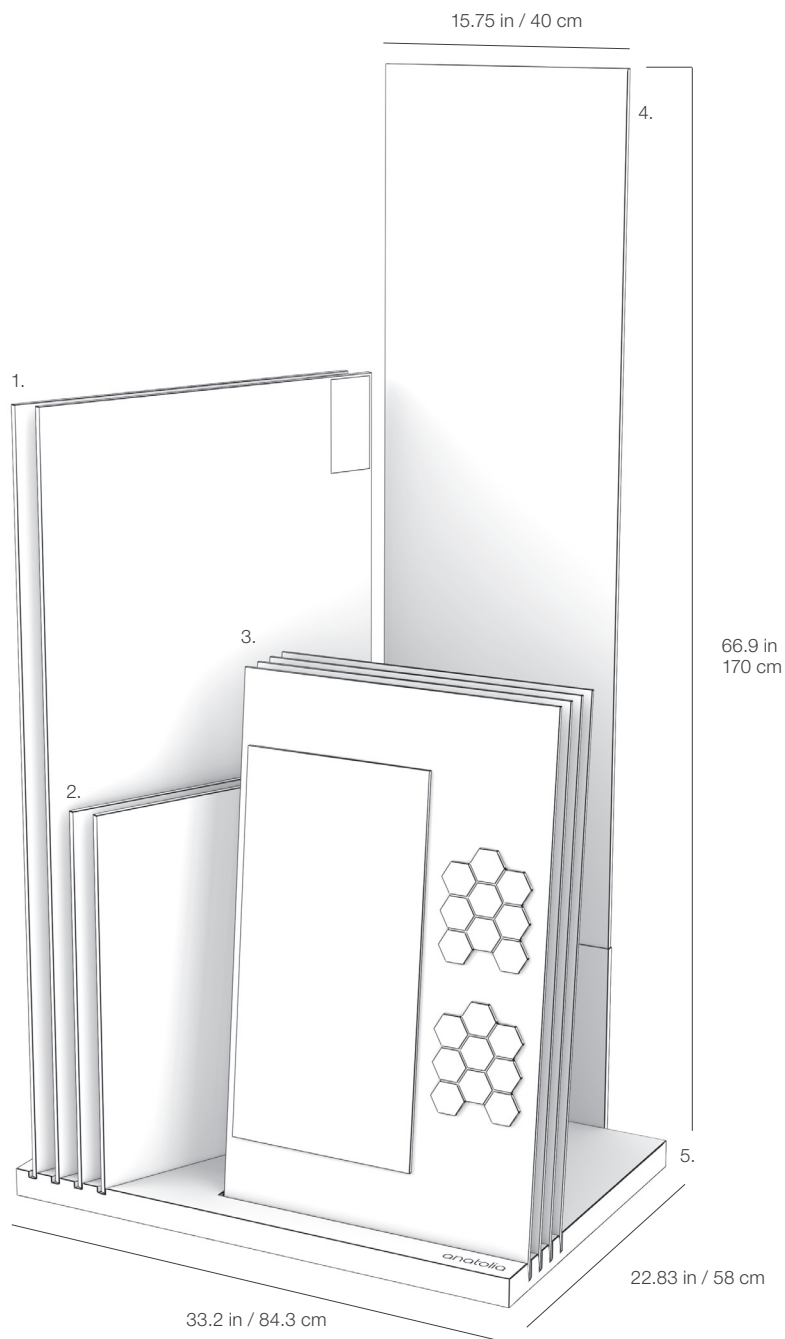
Inspirational branding panel draws consumers' attention with luxurious room scenes and colors at a glance.

Plata, *Floor Display Kit*

Key specifications and item codes

ITEM DESCRIPTION	CONTENTS	ITEM CODE
PLATA DISPLAY BOARD KIT	2 SAMPLE TILE SETS (4 TILES IN TOTAL), 1 DISPLAY BOARD SET (4 BOARDS IN TOTAL), 1 DISPLAY BASE (2 PARTS) AND 1 BRANDING PANEL	9901-0064-0

- 1. 24 x 48 in / 60 x 120 cm Glazed Porcelain Tiles (2 in total)
- 2. 24 x 24 in / 60 x 60 cm Glazed Porcelain Tiles (2 in total)
- 3. 20 x 33 in / 51 x 84 cm Display Boards (4 in total)
- 4. 15.75 x 67 in / 40 x 170 cm MDF Branding Panel (1 in total)
- 5. 843 x 580 x 45 mm White Matte MDF Display Base
- 6. 8 x 13.5 in / 20.2 x 34.5 x 0.2 cm White Matte Metal Fixture



Marketing support, *Sample Tiles*

Anatolia's quality difference and ultra-realistic designs are best experienced with large scale sample tiles. Creative excellence combined with state-of-the-art scanning, printing and photo imaging technology delivers unparalleled quality and realism. Meticulous manufacturing and quality control measures ensure that Anatolia delivers the highest product quality available in the industry.



ITEM DESCRIPTION	CONTENTS	ITEM CODE
24 x 48 in / 60 x 120 cm PLATA GLAZED PORCELAIN SAMPLE TILE SET - PART 1	24 x 48 in / 60 x 120 cm PLATA STATUARIO BRINA POLISHED RECTIFIED GLAZED PORCELAIN TILE	9902-1047-0
	24 x 48 in / 60 x 120 cm PLATA PERLA GRIGIA POLISHED RECTIFIED GLAZED PORCELAIN TILE	
24 x 24 in / 60 x 60 cm PLATA GLAZED PORCELAIN SAMPLE TILE SET - PART 2	24 x 24 in / 60 x 60 cm PLATA ONYX CRYSTALLO POLISHED RECTIFIED GLAZED PORCELAIN SAMPLE TILE	9902-1048-0
	24 x 24 in / 60 x 60 cm PLATA CARRARA ABISSO POLISHED RECTIFIED GLAZED PORCELAIN SAMPLE TILE	

Marketing support, *Display Boards*

Anatolia has designed a premium, compact and efficient display board that allows for it to be easily picked up and moved around for design discussions with clients. The front of the board displays a variety of formats.

The back of the board features elegant and refined rooms scenes specific to each tile color for inspiration. Technical specifications include tile sizes, finishes available, usage recommendations and highlight a sample of tile variations.



20.5 x 33.4 in / 52 x 85 cm Plata Panel, front



20.5 x 33.4 in / 52 x 85 cm Plata Panel, back

<i>Display Board Set</i>		ITEM DESCRIPTION	ITEM CODE
4 Display Boards for colors Statuario Brina, Perla Grigia, Onyx Crystallo, Carrara Abisso		Plata Display Board Set	9902-1049-0
<i>Additional Components</i>			ITEM CODE
33.25 x 22.75 in / 84.3 x 58 cm 45 mm White Matte MDF Display Base 8 Slots (Part 1)			9902-1036-0
8 x 13.5 in / 20.2 x 34.5 cm 2 mm White Matte Metal Display Base (Part 2)			9902-1037-0
15.75 x 67 in / 40 x 170 cm 12 mm Plata MDF Branding Panel			9902-1095-0

Marketing support, A&D Board

Today's A&D community and dealer network has very limited space in their design libraries and customer showrooms. Therefore, Anatolia wanted to reinvent the typical contractor board and architectural binder by combining them into one multipurpose and space efficient merchandising tool.

Once opened up the board acts like a traditional contractor board with an easy to hold handle with all the information needed to make design decisions. On the front are sizes and finishes at a glance along with color chips and room renders. On the back are all of the critical technical specifications needed to specify a design space along with room scenes for inspiration.

This unique to Anatolia A&D board sits on shelf folded with a book like spine that clearly identifies the collection name, material type and corresponding inspiration for the collection. When pulled out slightly, one can easily see the collection's colors at a glance.



A&D Board Outside



A&D Board Inside

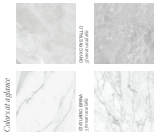
A&D Board	ITEM DESCRIPTION	ITEM CODE	UPC
A&D Board for Colors Statuario Brina, Perla Grigia, Onyx Crystallo, Carrara Abisso	Plata A&D Board	9902-1096-0	828492062852

12 in / 30.5 cm

anatolia

Plata
Glazed Porcelain
Stone Inspiration

Exquisite stone design looks inspired by silvery shades of grey, onyx and white marble.



Color at a Glance

anatolia

Plata

Glazed Porcelain

Stone Inspiration



24 x 48 in / 60 x 120 cm Plata Statuario Brina Matte Rectified Glazed Porcelain Tile

Plata, Glazed Porcelain.
Exquisite stone design looks inspired by silvery shades of grey, onyx and white marble.

The simple beauty of neutral marble tones and silvery grey veining is the essence of this fundamental Plata collection. The tonal range and imagery found across colors are complementary and allows for mixing and matching in this series. This is a versatile collection because of its ability to easily pair with a wide variety of styles, looks and finishes.



24 x 48 in / 60 x 120 cm Plata Brina Matte Rectified Glazed Porcelain Tile

Technical Information		
WATER RESISTANCE	ANSI (C1 - IV)	>100
ABRASION RESISTANCE	ANSI (C1 - III)	CLASS 4
STAIN RESISTANCE	ANSI (C1 - III)	CLASS 4
SLIP RESISTANCE	ANSI (C1 - III)	>100
FLAME RESISTANCE	ANSI (C1 - III)	CLASS 4
SMOOTH RESISTANCE	ANSI (C1 - III)	CLASS 4
CRACK RESISTANCE	ANSI (C1 - III)	CLASS 4
TEAR RESISTANCE	ANSI (C1 - III)	CLASS 4
POSS. RESISTANCE	ANSI (C1 - III)	CLASS 4

See website for more information: <https://www.anatoliatile.com> or call 1-800-451-1111. Please note: All tiles are made in Turkey.

Usage Recommendations		
APPLICATION	WALL	FLOOR
RESIDENTIAL	+	+
COMMERCIAL	+	+
INDUSTRIAL	+	+
OUTDOOR	+	+

Product & Packaging Information		STATUARIO BRINA		CARRARA ABISSO		PERLA GRIGIA		ONYX CRYSTALLO		LUNA		SILVER		SILVER	
AREA	THICKNESS	STATUARIO BRINA	CARRARA ABISSO	PERLA GRIGIA	ONYX CRYSTALLO	LUNA	SILVER	SILVER	SILVER	SILVER	SILVER	SILVER	SILVER	SILVER	SILVER
24 x 48 in / 60 x 120 cm	1/4 in	ANSI (C1 - III)	ANSI (C1 - III)	ANSI (C1 - III)	ANSI (C1 - III)	ANSI (C1 - III)	ANSI (C1 - III)	ANSI (C1 - III)	ANSI (C1 - III)	ANSI (C1 - III)	ANSI (C1 - III)	ANSI (C1 - III)	ANSI (C1 - III)	ANSI (C1 - III)	ANSI (C1 - III)
12 x 24 in / 30 x 60 cm	1/4 in	ANSI (C1 - III)	ANSI (C1 - III)	ANSI (C1 - III)	ANSI (C1 - III)	ANSI (C1 - III)	ANSI (C1 - III)	ANSI (C1 - III)	ANSI (C1 - III)	ANSI (C1 - III)	ANSI (C1 - III)	ANSI (C1 - III)	ANSI (C1 - III)	ANSI (C1 - III)	ANSI (C1 - III)
12 x 12 in / 30 x 30 cm	1/4 in	ANSI (C1 - III)	ANSI (C1 - III)	ANSI (C1 - III)	ANSI (C1 - III)	ANSI (C1 - III)	ANSI (C1 - III)	ANSI (C1 - III)	ANSI (C1 - III)	ANSI (C1 - III)	ANSI (C1 - III)	ANSI (C1 - III)	ANSI (C1 - III)	ANSI (C1 - III)	ANSI (C1 - III)
6 x 12 in / 15 x 30 cm	1/4 in	ANSI (C1 - III)	ANSI (C1 - III)	ANSI (C1 - III)	ANSI (C1 - III)	ANSI (C1 - III)	ANSI (C1 - III)	ANSI (C1 - III)	ANSI (C1 - III)	ANSI (C1 - III)	ANSI (C1 - III)	ANSI (C1 - III)	ANSI (C1 - III)	ANSI (C1 - III)	ANSI (C1 - III)
3 x 12 in / 7 1/2 x 30 cm	1/4 in	ANSI (C1 - III)	ANSI (C1 - III)	ANSI (C1 - III)	ANSI (C1 - III)	ANSI (C1 - III)	ANSI (C1 - III)	ANSI (C1 - III)	ANSI (C1 - III)	ANSI (C1 - III)	ANSI (C1 - III)	ANSI (C1 - III)	ANSI (C1 - III)	ANSI (C1 - III)	ANSI (C1 - III)

anatoliatile.com
info@anatoliatile.com

© 2021 Anatolia Tile & Stone Inc. All Rights Reserved.

Anatolia Tile & Stone Inc. is a registered trademark of Anatolia Tile & Stone Inc. All Rights Reserved.

Board 1 of 1



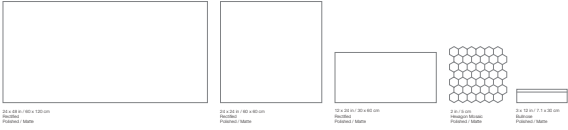
0.7 in
1.8 cm

Fully Open:
21.45 in
54.5 cm

Plata
Glazed Porcelain
Stone Inspiration

anatolia

Formats at a Glance



Statuario Brina

Plata



Onyx Crystallo

Plata



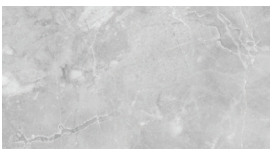
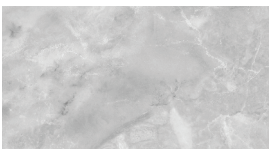
Carrara Abisso

Plata



Perla Grigia

Plata



A&D Board Outside

A&D Board Inside

Marketing support, *Sample Chips*

Sample chips are an essential tool to bring mood boards to life and inspire a cohesive design space. They need to be relatively small and yet contain all of the critical design and collection specifications needed.

Anatolia has created a sample chip program that categorizes sample chips into color coded material types, includes a sample chip affixed to an elegant backer card and includes all of the key technical information and formats for that color on its back label. Anatolia also developed a premium sample chip carrying case to easily and beautifully store, organize, and carry sample chips to meetings.



Backer Board Size: 3.25 x 6 in / 8.25 x 15.25 cm

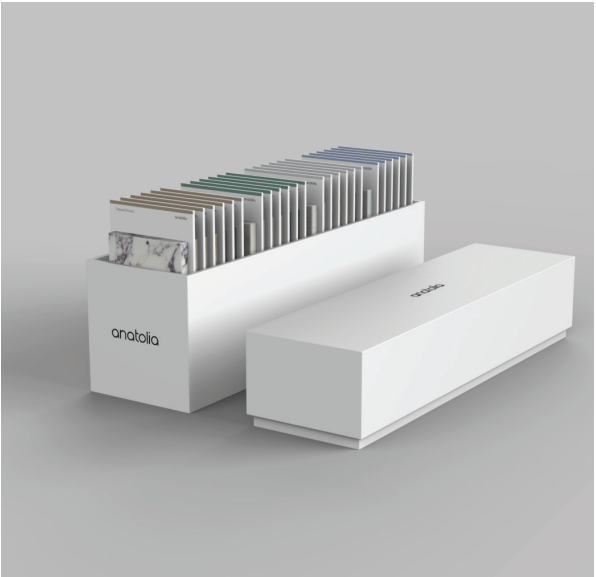
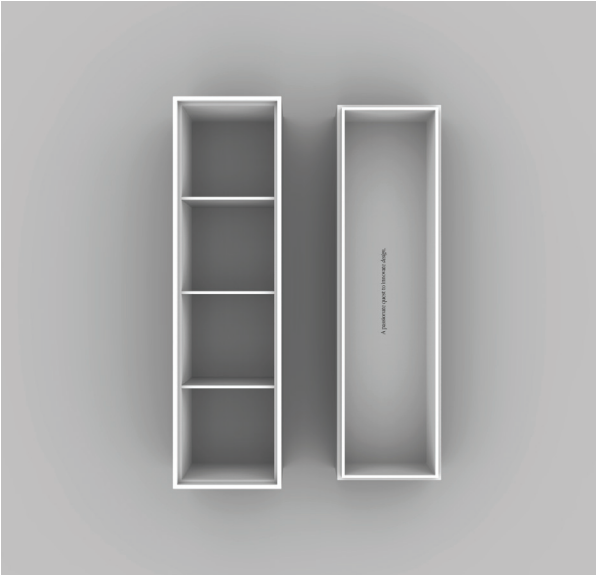


<i>Sample Chips</i>	ITEM CODE	UPC
Plata Statuario Brina Polished Sample Chip	9902-1087-0	828492062067
Plata Perla Grigia Polished Sample Chip	9902-1057-0	828492062081
Plata Onyx Crystallo Polished Sample Chip	9902-1088-0	828492062104
Plata Carrara Abisso Polished Sample Chip	9902-1089-0	828492062128

<i>Sample Chips</i>	ITEM CODE	UPC
Plata Statuario Brina Matte Sample Chip	9902-1056-0	828492062074
Plata Perla Grigia Matte Sample Chip	9902-1058-0	828492062098
Plata Onyx Crystallo Matte Sample Chip	9902-1059-0	828492062111
Plata Carrara Abisso Matte Sample Chip	9902-1060-0	828492062135

Marketing support, *Sample Chip Carrying Case*

Anatolia has developed a premium sample chip carrying case to easily and beautifully store, organize, and carry sample chips to meetings and for sample libraries. The case comes empty and can hold up to 24 sample chips.



ITEM DESCRIPTION	CONTENTS	ITEM CODE	UPC
4.1 x 14.8 x 7.5 in / 37.6 x 10.4 x 17.9 cm Sample Chip Carrying Case (Empty)	As per above	9902-1659-0	828492074879

Discover more at
anatolia.com