

Regency, *Glazed Porcelain*.  
Merchandising



anatolia

# Marketing support, *A&D Board*

Today's A&D community and dealer network has very limited space in their design libraries and customer showrooms. Therefore, Anatolia wanted to reinvent the typical contractor board and architectural binder by combining them into one multipurpose and space efficient merchandising tool.

Once opened up the board acts like a traditional contractor board with an easy to hold handle with all the information needed to make design decisions. On the front are sizes and finishes at a glance along with color chips and room renders. On the back are all of the critical technical specifications needed to specify a design space along with room scenes for inspiration.

This unique to Anatolia A&D board sits on shelf folded with a book like spine that clearly identifies the collection name, material type and corresponding inspiration for the collection. When pulled out slightly, one can easily see the collection's colors at a glance.



A&D Board Outside



A&D Board Inside

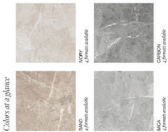
<i>A&amp;D Board</i>	ITEM DESCRIPTION	ITEM CODE	UPC
A&D Board for Colors Carbon, Ivory, Mica, Sand	Regency A&D Board	9902-1325-0	828492068434

12 in / 30.5 cm

anatolia

Regency  
Glazed Porcelain  
Stone Inspiration

Vibrant and impactful natural stone designs that add interest and character to any design space.



anatolia

Regency

Glazed Porcelain

Stone Inspiration



12 x 24 in / 30 x 60 cm Regency Carbon Matte Pressed Glazed Porcelain Tile

**Regency, Glazed Porcelain.**  
Vibrant and impactful natural stone designs that add interest and character to any design space.  
A variety of colors that allow for the strong character of the stone's design to come forward.  
This collection is offered in an essential selection of formats and sizes, including a mosaic and a bushone.

Product & Packaging Information									
FORMAT	FINISH	THICKNESS	AREA	AREA	AREA	AREA	AREA	AREA	AREA
12 x 24 in / 30 x 60 cm	REG-1224	3/8 in	400-000-0-0	400-000-0-0	400-000-0-0	400-000-0-0	400-000-0-0	400-000-0-0	400-000-0-0
12 x 24 in / 30 x 60 cm	REG-1224	3/8 in	400-000-0-0	400-000-0-0	400-000-0-0	400-000-0-0	400-000-0-0	400-000-0-0	400-000-0-0
12 x 24 in / 30 x 60 cm	REG-1224	3/8 in	400-000-0-0	400-000-0-0	400-000-0-0	400-000-0-0	400-000-0-0	400-000-0-0	400-000-0-0
12 x 24 in / 30 x 60 cm	REG-1224	3/8 in	400-000-0-0	400-000-0-0	400-000-0-0	400-000-0-0	400-000-0-0	400-000-0-0	400-000-0-0

anatolia.com  
info@anatolia.com

© 2023 Anatolia Inc. All Rights Reserved.  
Resale and distribution is strictly prohibited without written permission from Anatolia Inc.

Board 1 of 1



0.7 in  
1.8 cm

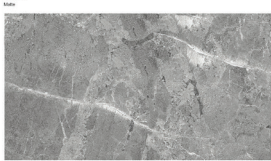
Regency  
Glazed Porcelain  
Stone Inspiration

anatolia

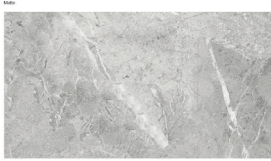
Formats at a Glance



Sand



Mika



Ivory



Carbon



Fully Open:  
21.45 in  
54.5 cm



12 x 24 in / 30 x 60 cm Regency Carbon Matte Pressed Glazed Porcelain Tile

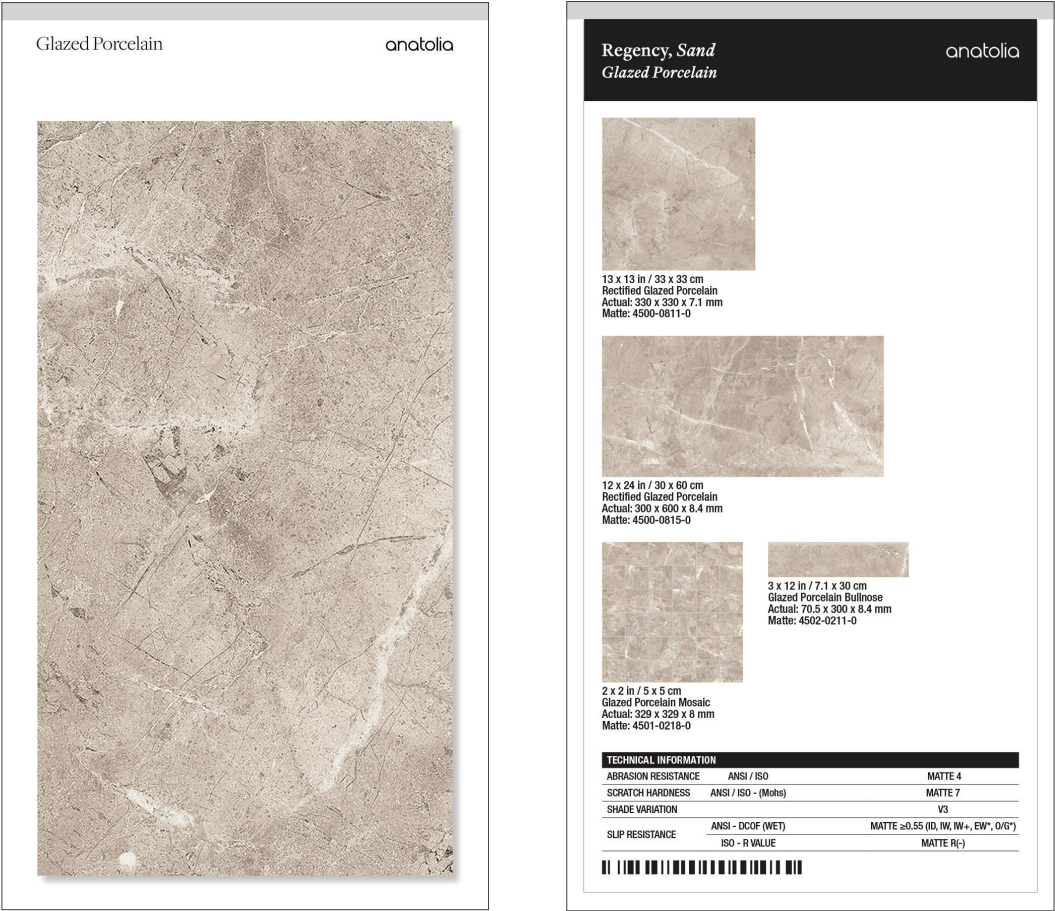
A&D Board Outside

A&D Board Inside

# Marketing support, *Sample Chips*

Sample chips are an essential tool to bring mood boards to life and inspire a cohesive design space. They need to be relatively small and yet contain all of the critical design and collection specifications needed.

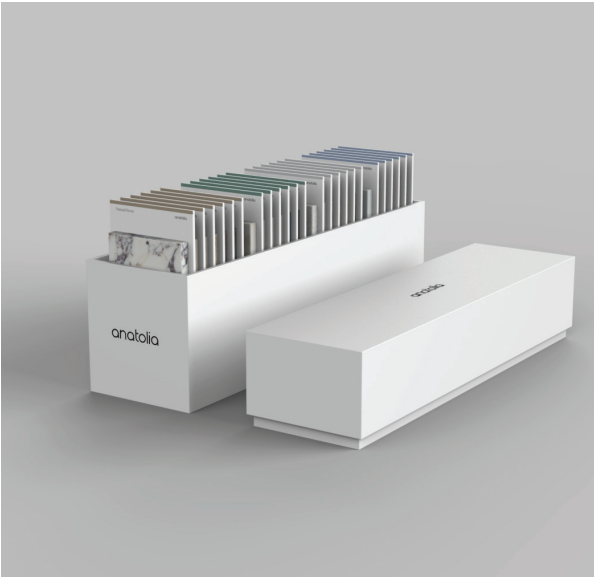
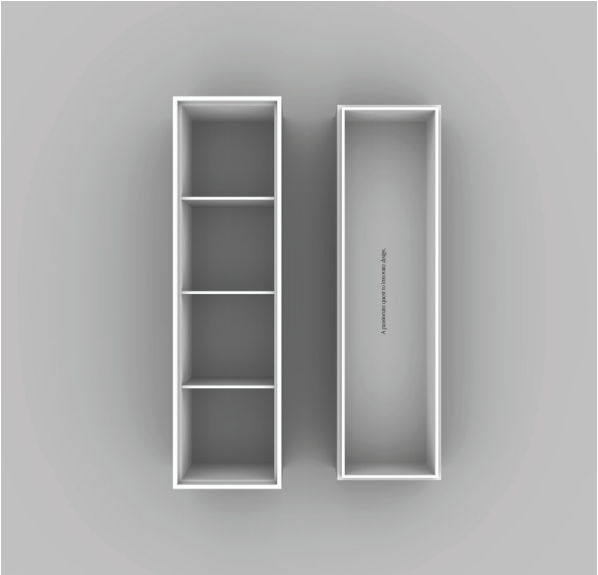
Anatolia has created a sample chip program that categorizes sample chips into color coded material types, includes a sample chip affixed to an elegant backer card and includes all of the key technical information and formats for that color on its back label. Anatolia also developed a premium sample chip carrying case to easily and beautifully store, organize, and carry sample chips to meetings.



Sample Chips	ITEM CODE	UPC
Regency Carbon Matte Porcelain Sample Chip	9902-1237-0	828492066348
Regency Ivory Matte Porcelain Sample Chip	9902-1238-0	828492066355
Regency Mica Matte Porcelain Sample Chip	9902-1239-0	828492066362
Regency Sand Matte Porcelain Sample Chip	9902-1240-0	828492066379

# Marketing support, *Sample Chip Carrying Case*

Anatolia has developed a premium sample chip carrying case to easily and beautifully store, organize, and carry sample chips to meetings and for sample libraries. The case comes empty and can hold up to 24 sample chips.



ITEM DESCRIPTION	CONTENTS	ITEM CODE	UPC
4.1 x 14.8 x 7.5 in / 37.6 x 10.4 x 17.9 cm Sample Chip Carrying Case (Empty)	As per above	9902-1659-0	828492074879

*Discover more at*  
anatolia.com