



**Reynolds**

Stylish window treatments



**STYLE STUDIO**

Roman & Curtain Collection

## FROM CONCEPTION TO CREATION

---

*We are proud to introduce our luxurious Style Studio Roman & Curtain Collection.*

The collection comprises of a spectacular array of exquisite new fabric weaves and prints in varying scale options. A wide display of fabrics are presented within our collection book as well as additional fabrics viewable online. All of the materials have been developed and tested to their limit to guarantee they are of the highest quality, ensuring you receive only *outstanding fabrics*.

*Our trend analysts have been committed and dedicated in the creative process to ensure all designs and tones selected will feature in **current and upcoming trends**.*





## THE COLLECTION

.....

Contained within the collection are a vast assortment of *traditional* and *contemporary* fabrics including delicate botanicals, British heritage-inspired tartans, sumptuous velvets, classic stripes and intricate trellises and geometrics, allowing you to create any look and feel you desire.



Roman Fabric: Elvira Willow  
Curtain Fabric: Sherwood Silver

## THE FULL PACKAGE

.....

All fabrics within the collection can be used to create *beautiful* Roman Blinds, Curtains, Cushions or Tiebacks of your choice.

Romans can have a plain, dovetail or diamanté finish.

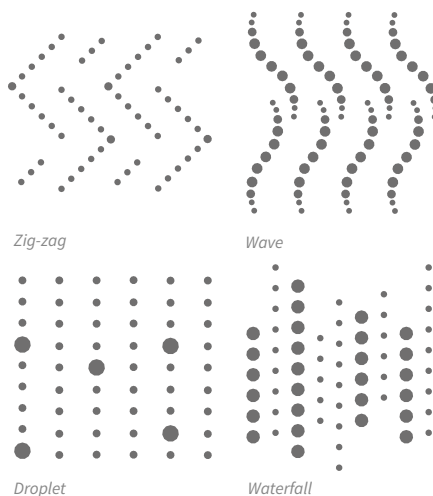


You can order co-ordinating filled or unfilled cushions in a selection of three sizes and depending on the look desired you can either opt for plain or piped cushions.

### Cushion Sizes:

40x40cm, 60x60cm, 30x50cm

For an additional *glamorous* look, cushions can be applied with one of four diamanté finishes.





**DON'T FORGET TO TAKE A LOOK AT OUR  
EXTENSIVE RANGE OF ACCESSORIES**

FABRICS HARMONISE  
*Beautifully*

Roman Fabric: Elgin Heather  
Curtain Fabric: Elgin Praline



Elgin Cranberry



Elgin Denim



Elgin Dijon



Elgin Heather



Elgin Praline



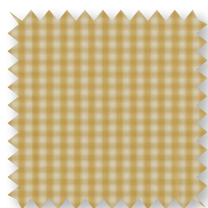
Nairn Charcoal



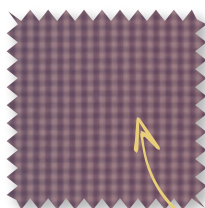
Nairn Cranberry



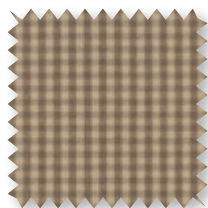
Nairn Denim



Nairn Dijon



Nairn Heather



Nairn Praline



Nairn Sky

## LUXURY TARTAN RANGES

.....

Create a *British heritage-inspired* interior with our tactile woollen-look fabrics *Elgin* and *Nairn*.

*Elgin* is the larger scale construct of the pair and the intricate fabric design consists of a dominating background hue that has been layered with *flecks of complementary colours* to obtain a stunning checked appearance.



*Nairn* is a smaller scale design of a simplistic *tone on tone check*, ensuring whether a statement or understated fabric is desired there is a scale option to suit both tastes.

## LUXURY VELVET RANGE

.....

Create a *vintage-inspired styling* with our exquisite range of deep-pile crushed sumptuous velvets *Elega*.

Velvet is an on-trend fabric that is currently prevalent within interior design. As Velvet is associated with *nobility* it can also give your space a feeling of *grandeur*.

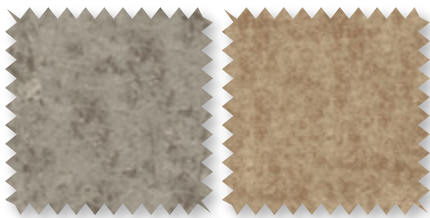
*It is an adaptable fabric that blends effortlessly with other plains or textures and the textured surface reflects light creating a spacious feel.*

The range is complete with **10** colour options



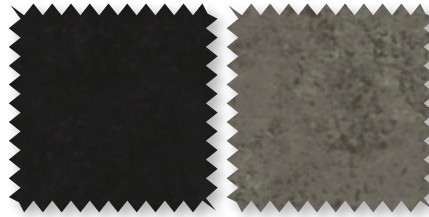
Elegia Fuschia

Elegia Heather



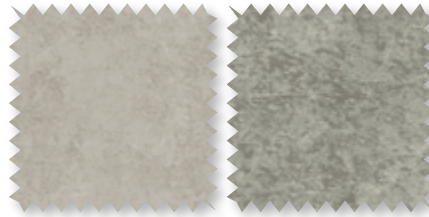
Elegia Ivory

Elegia Mocha



Elegia Noir

Elegia Otter



Elegia Oyster

Elegia Pebble



Elegia Plum

Elegia Silver





Roman Fabric: Elegia Fuschia  
Curtain Fabric: Elegia Heather



VINTAGE INSPIRED

# *the* IMPORTANCE OF COLOUR

---

We recognise that **colour** has the ability to affect our moods which is why extensive research has gone into identifying particular shades that will create a positive ambience within your home.

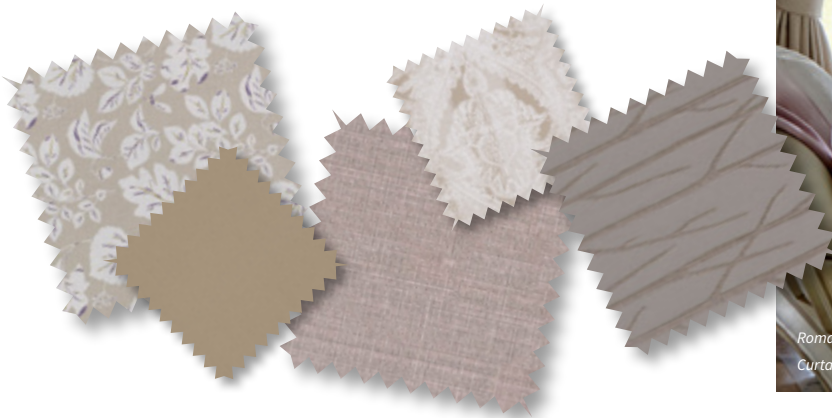
Neutrals are the most *dynamic* colour grouping of all the fabrics as they have the capability to complement all shades on the spectrum.

Depending on the tone you choose, it can alter the mood created within your room.

Rich, deep neutrals can conjure a *welcoming atmosphere* with their warming nature.

Lighter, cooler shades can reflect light and open up a room to create a spacious feel.

Our stunning Harrogate range has a *shimmering stripe* overlay which can further produce an expansive feel.



Roman Fabric: Callie Nougat  
Curtain Fabric: Avery Nougat

Roman Fabric: Regency Blush  
Curtain Fabric: Harrogate Blush

Callie Dove

Dew Ivory

Harewood Dove

Callie Nougat

Harrogate Nougat

THE PERFECT  
*Partnership*

## GREYS & BLACKS

---

*Greys & Blacks* are on-trend colours and their sophisticated nature means they respond beautifully to both warm and cool shades.

They are unobtrusive colours and can be used with confidence in any room within your home.

Use in combination with a bright hue to create a *dramatic look* or pair silvers with muted shades for a *soft and soothing feel*.

Choose from our large assortment of blackened, warm or cool, pale, inky toned greys and blacks.



Roman Fabric: The Lime Slate





CREATIVE COUPLING  
*of colour*

Roman Fabric: *Elvira Willow*  
Curtain Fabric: *Sherwood Silver*



Roman Fabric: Maisie Mauve  
Curtain Fabric: Sherwood Grape

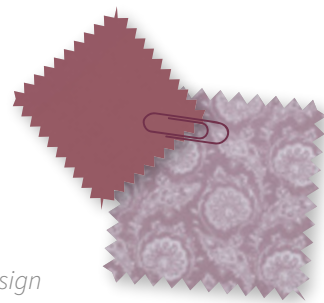
## PINKS & PURPLES

### *Behold Beautiful Copper Blushes*

Currently prevalent within interior design is the use of soft pastel pinks and purples, with particular attention being paid to copper blush pinks.

Pinks and Purples are unassuming colours that have connotations of nurturing and protection, which enables them to induce a comforting environment.

Try our chalky Avery Blush fabric to add a subtle glow of warmth to your home.



Roman Fabric: Avery Blush

PLAYFUL  
&  
ROMANTIC



Use our delicate, *Piamento Rose* in combination with our *Mertan Rose* for a playful, romantic look.

For a more daring style try one of our bold shades



Roman Fabric: *Piamento Rose*  
Curtain Fabric: *Mertan Rose*



**THE DAWN OF THE  
CLEVER COLOUR DUO**





Roman Fabric: Nirvana Cobalt  
Curtain Fabric: Sherwood Teal

## BLUES & GREENS

.....

This year has witnessed *blues teaming up with zesty, citrus greens* to create an interesting colour combination within interior design.

*Blues and Greens combined have the ability to inject vibrancy yet still evoke a calming ambience, as their base tones induce peace and tranquillity into a space.*

They are *practical colours* that are entirely versatile throughout the home as their tones work harmoniously with any room styling.

To obtain a modern, *fresh-feel* use one of our stunning teals Nirvana Cobalt and Sherwood Teal.



Roman Fabric: Harper Aqua  
Curtain Fabric: Kimbel Aqua

## ORANGES & REDS

---

### *Welcome in the Captivating Colours*

Oranges and Reds are powerful colours that *infuse energy* and excitement into a space.

They are vibrant colours that *demand attention* and are ideal as either an accent colour or a dominating hue.

Make a bold statement with our contemporary *Kite Poppy* and *The Lane Rose*.

From striking brights to grounded rustics we have the shade to suit your taste.



Curtain Fabric: Citadel Cherry





Roman Fabric: Kite Poppy  
Curtain Fabric: The Lane Rose

## TRELLIS & GEOMETRICS

.....

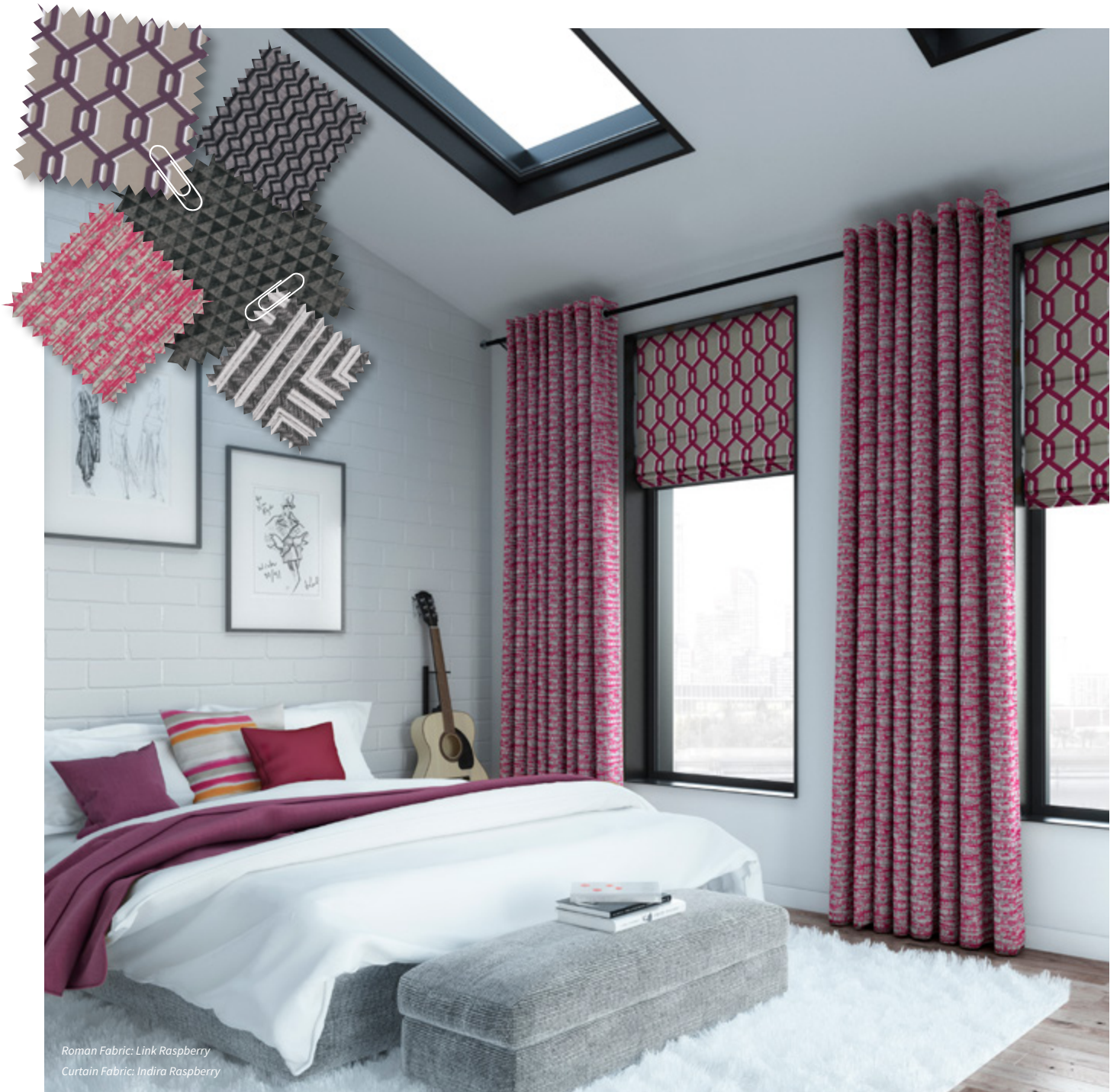
### *On-Trend Intricate Designs*

The Roman and Curtain Collection allows you to adopt the Trellis and Geometric trend whether you want your fabric to blend in or make an impact.

*You can achieve an elegant, understated look by using our neutral fabrics.*

Or inject a colour to produce a daring, contemporary aesthetic.





Roman Fabric: Link Raspberry  
Curtain Fabric: Indira Raspberry





CHILD SAFE  
PRODUCT

# VANTAGE<sup>PLUS</sup>

## VANTAGE PLUS SYSTEM

---

All of our Roman blinds are 100% handmade by a skilled, *dedicated workforce* and use our luxury Vantage Plus System.

The Vantage Plus System is a quality, robust system that is discreetly hidden from view to ensure our sumptuous fabrics take *centre stage*.

The full Roman blind is Child Safety compliant and is operated with a metal chain for durability.



Roman Fabric: Cadence Ochre



Roman Fabric: Lottie Ochre

## CURTAIN POLES & FINIALS

.....

Complete your window covering look with our spectacular complementary curtain poles and finials.

*Choose either deluxe standard or thermal blackout lining in white or cream, depending on the light control required.*



CURTAIN POLES  
*to complement*

Roman Fabric: Harewood Flint  
Curtain Fabric: Feather Noir



# smartfit



Add the convenience and the luxury appeal of motorised control to any of our roller or vertical blinds.

*The quiet and smooth operation motors are concealed inside your blinds to maintain the stylish appearance of the product. Raise, lower, open or close your blind at the touch of a button. For real convenience, control multiple blinds and curtains in your home from one remote control.*

## ***Operation***

*We offer options of remote control operation via handset, wall switch or timer function that will open and close your blinds automatically in the morning and evening or when you are away on holiday.*

## ***Power***

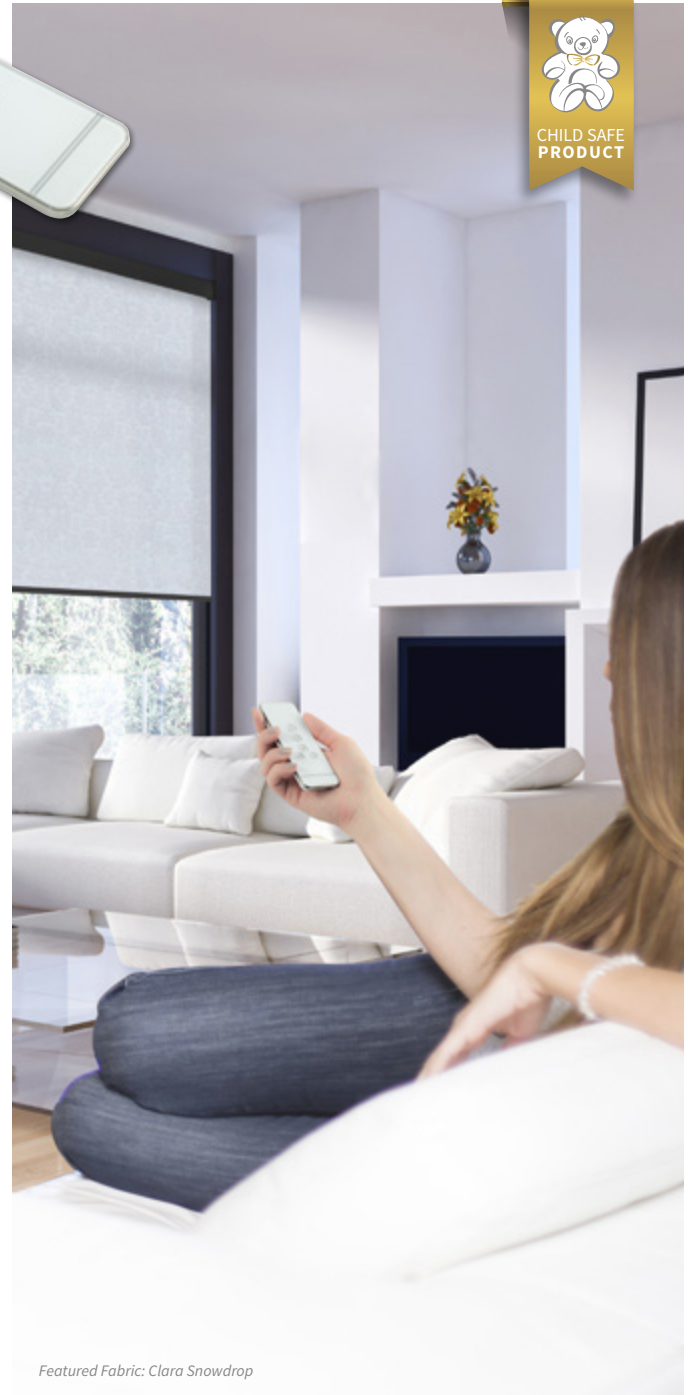
*Our Smartfit motors have the option of being mains powered from a plug or fused spur. Where power is not available, our battery operated motors allow all of the features of a mains powered blind with a fuss free and easy installation.*

## ***Other control options***

*Our blinds are often compatible with third party control options to offer operation from your phone/tablet or integrated into your home management systems. We are here to help and advise on compatibility prior and post purchase.*



CHILD SAFE  
PRODUCT

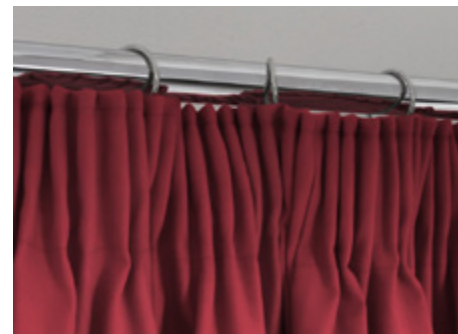


Featured Fabric: Clara Snowdrop



**FIND YOUR  
OWN STYLE**







# DESIGNSPACE

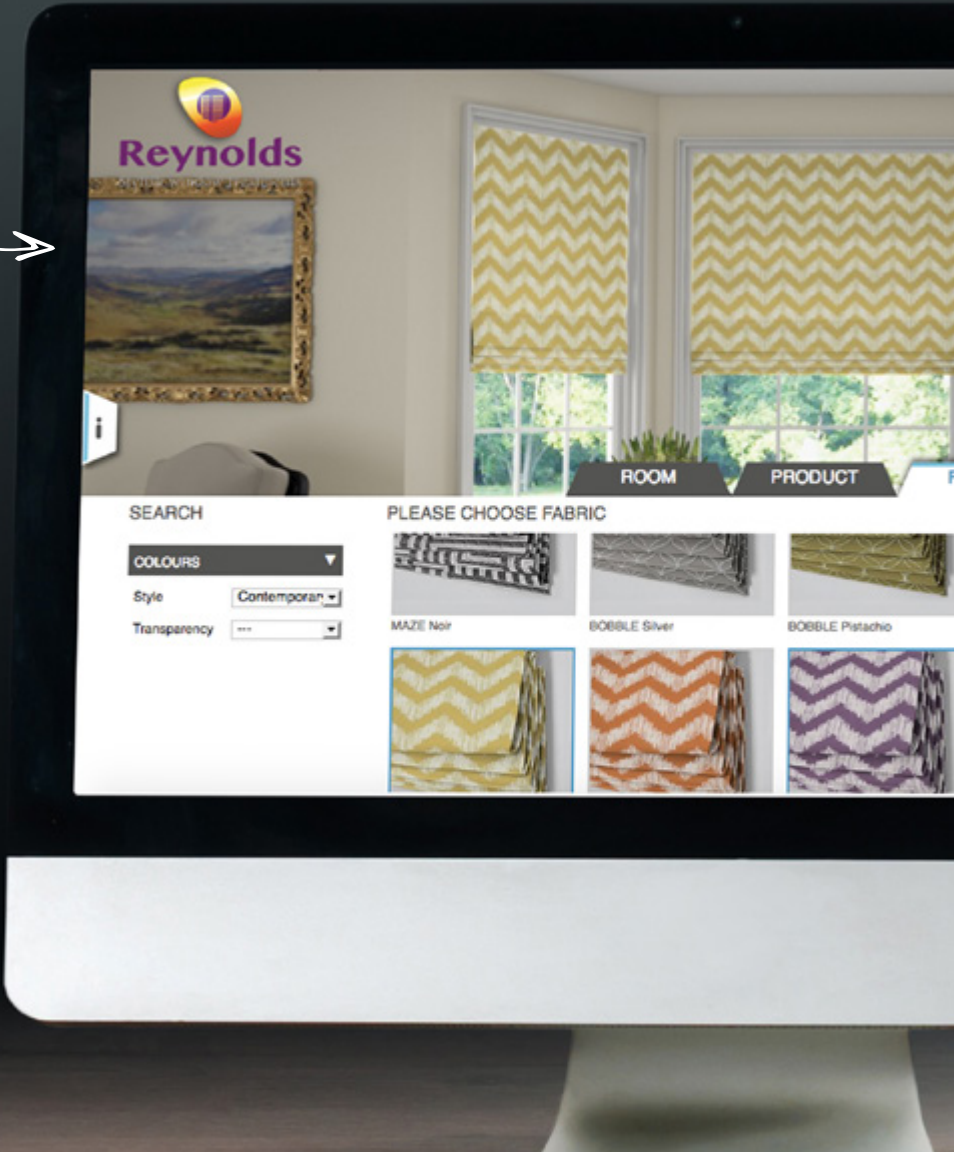
We've created an interactive and innovative tool which allows you to realise your room's potential at the touch of a button.

Browse over 1000 fabrics and choose up to five free fabric samples, to help design your room to suit your taste.

[reynoldsblinds.co.uk](http://reynoldsblinds.co.uk)

## WHY REYNOLDS BLINDS?

With over 25 years experience, all our products are made to measure and come with a free measuring and installation service. Visit one of our friendly local showrooms or head to our website at [reynoldsblinds.co.uk](http://reynoldsblinds.co.uk)



For more information or to book an appointment

 0333 004 4000  [reynoldsblinds.co.uk](http://reynoldsblinds.co.uk)

Blind Rage Ltd t/a Reynolds Blinds. Registered office at 19/25 Melchett Road, Kings Norton, Birmingham B30 3HG.

