



Introducing Demand-Driven Scheduling

Powered by TCP's Humanity Scheduling

Employee schedules are the backbone of your organization. But when you reuse them week over week, you can never really catch up with your business dynamics. It's high time to get more strategic.

With Demand-Driven Scheduling, your managers can fine tune future schedules in reflection of prior customer activity and staffing policies you have in place. The result is the true golden standard for shift schedules: having not too many, not too few, but just enough staff members on deck at all times.

How can your organization benefit from Demand-Driven Scheduling?

- If you are in a heavily regulated industry with strict rules on staffing, Demand-Driven Scheduling will ensure those rules are incorporated in your scheduling process, minimizing compliance risks.
- If your business experiences fluctuations in customer demand, you'll be able to fine-tune your rosters so they are consistent with those changes.
- If your managers cannot seem to find a balance between understaffing and overstaffing, they'll get a clear visual overview of which shifts need to be adjusted so an optimal number of staff members is scheduled.
- If creating schedules takes hours out of your day, you'll be able to automate the process with powerful tools for building and assigning shifts, significantly reducing and simplifying your workload.

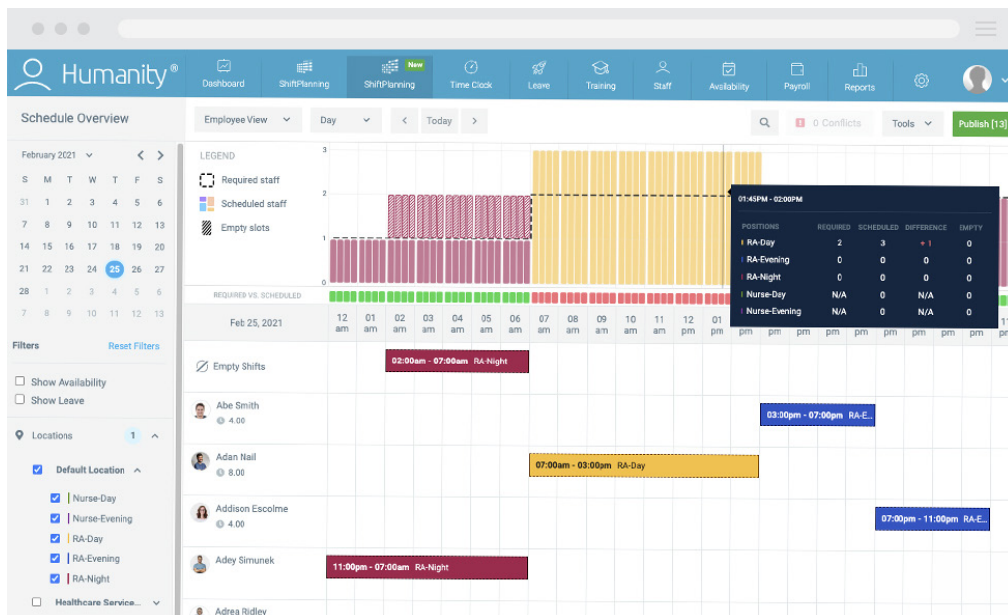
How Demand-Driven Scheduling Works

Follow the Rules of Your Business

Our robust and flexible rule builder uses your demand data and business policies as a basis for building schedules. You can use our convenient API to upload the data or you can import it manually as a .CSV or .XLSX file. Behind the scenes, we'll transform the data into staffing rules tailored to your business.

Recognize and Resolve Staffing Gaps

The practical Staffing Level graph is embedded in the scheduling engine, so you can immediately see how your shifts stack across positions and hours. Hovering over the graph in the Humanity app will get you more details and guidance on what you need to adjust. The handy bar underneath the graph points out over- and understaffing in red and adequate staffing level in green.



Automate the Scheduling Process

The days of manually adding and assigning shifts are behind you. Take advantage of the powerful duo, Auto-Build Schedule and Auto-Fill Schedule, to create and populate new shifts. Going from a blank calendar to a complete and optimized schedule has never been easier.



Want to know more about employee scheduling? Let's talk.

888.973.6030 | www.humanity.com

©2021 TimeClock Plus, LLC. All rights reserved.