

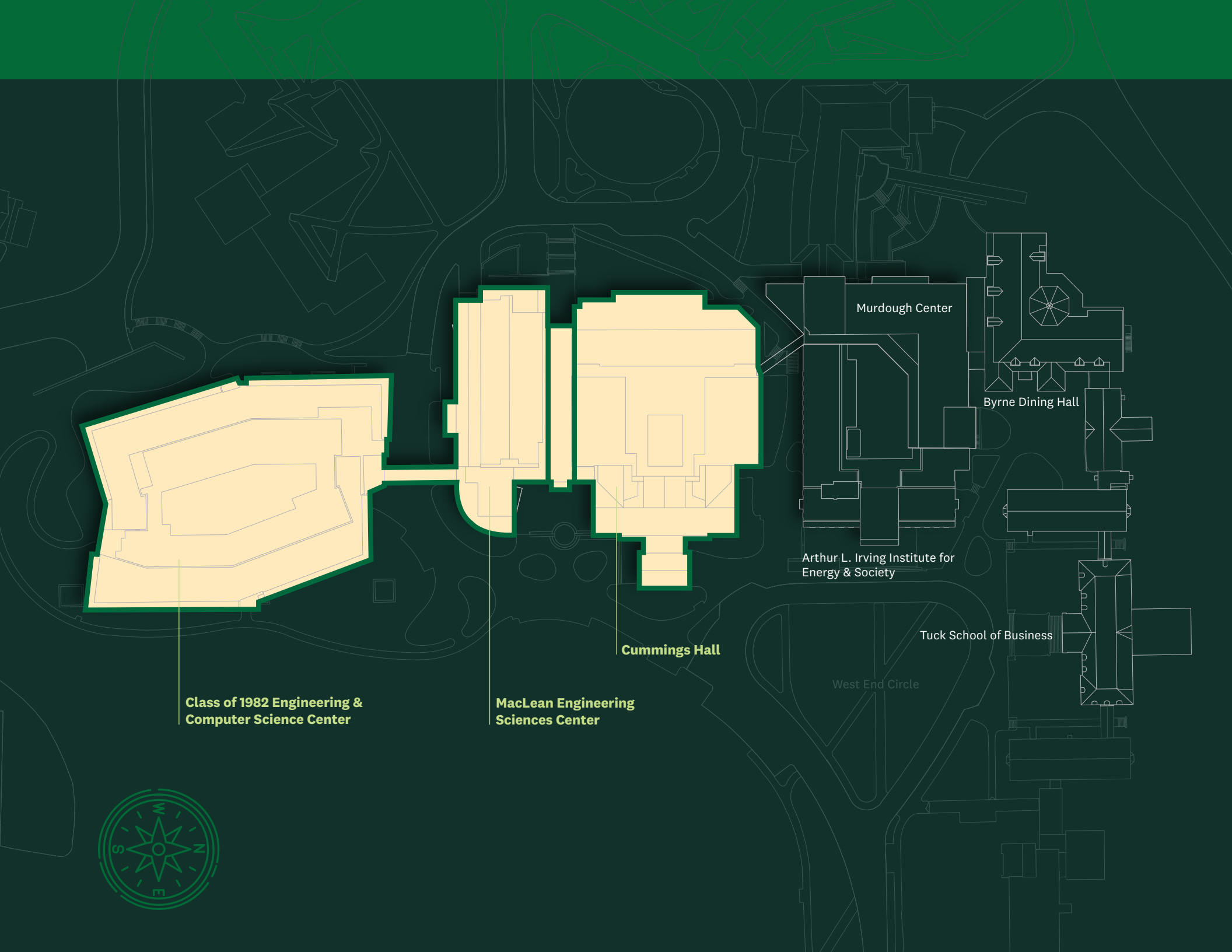
DARTMOUTH

West End District

BUILDING MAPS

Class of 1982 Engineering &
Computer Science Center

Cummings Hall &
MacLean Engineering Sciences Center



West End District

Class of 1982 Engineering & Computer Science Center

An expansion of Thayer School of Engineering, and home to the Department of Computer Science and Magnuson Center for Entrepreneurship, the Class of 1982 Engineering and Computer Science Center (ECSC) brings together key drivers of human-centered impact—interdisciplinary innovation, experiential learning, and technology transfer.

MacLean Engineering Sciences Center

MacLean Engineering Sciences Center (ESC) embodies Dartmouth's integrative approach to engineering with open, flexible spaces to facilitate hands-on learning, teamwork, and collaborative research. Named for donors Barry '60 Th'61 and Mary Ann MacLean, the Center allows for easy observation of works-in-progress and provides a window into the ingenuity and creativity of engineering.

Cummings Hall

Cummings Hall, which opened in 1939, was the first facility built specifically for engineering at Dartmouth, and served as Thayer's primary home until the addition of MacLean ESC in 2006 and the Class of 1982 ECSC in 2022. Along with labs, classrooms, and offices, Cummings still houses the popular MShop, a machine shop and makerspace where students and faculty turn ideas into reality.

Murdough Center

Murdough is home to Feldberg Business and Engineering Library, a two-story, interdisciplinary library for Thayer and Tuck, as well as their joint programs, including the Master of Engineering Management (MEM) program. Murdough connects directly to Irving via a light-filled atrium.

Irving Institute

Situated between Thayer and Tuck School of Business, Irving is where faculty, staff, and students engage in issues related to energy and society. The Institute's headquarters is also home to energy engineering faculty, the Dartmouth Sustainability Office, and Tuck's Revers Center for Energy, Sustainability, and Innovation.

Tuck School of Business

Dartmouth's top-ranked business school offers expertise in management, entrepreneurship, and technology transfer. Tuck facilities include Byrne Dining Hall, the heart of food services in the West End.

Class of 1982 ECSC



LEVEL B (BASEMENT/GARDEN)	4
LEVEL G (GROUND)	5
LEVEL 1	6
LEVEL 2	7

Class of 1982 ECSC

LEVEL B

(BASEMENT/GARDEN)

EB01	Holekamp Family Classroom
EB04	Back of the Napkin Café
EB05	Conference Room
EB07	Digital Arts Lab
EB08	Couch Project Lab II
EB09	Studio Classroom
EB10	Fahey Family Conference Room
EB11	Ballard Conference Room
EB12	Conference Room
EB13-EB19	Graduate Student Carrels
EB23-EB33	Electron Microscopy Suite and Offices
EB34A	SENSE Lab
EB34B	Light of Life Lab
EB35	MINE Lab
EB37A-B	Fitz Lab
EB39-EB46	Thayer Faculty and Staff Offices
EB45	Conference Room
EB47	Thayer Communications and Creative Services
EB47B	Student Group Office
EB48-EB54	Sudikoff Advanced Materials Lab



ROOM KEY	
	Classrooms and conference rooms
	Research and instructional labs
	Faculty and staff offices
	Graduate student and researcher offices
	Services and storage
	Utilities

EMERGENCY KEY	
	Automated External Defibrillator
	Landline telephone
	Safety shower and eyewash
	Safety eyewash

LEVEL G

(GROUND)

E001	Magnuson Center for Entrepreneurship
E002	Digital Applied Learning and Innovation (DALI) Lab
E003	Harold Edward Cable Makerspace
E004, E020	HealthX Lab
E005	Conference Room
E006	Design Research Lab
E007	Design Loft
E008	Tech-Enhanced Active Learning (TEAL) Classroom (48-seat)
E009	Flex Classroom (32-seat)
E010-E019	Computer Science Faculty Offices
E021-E039	Thayer Faculty Offices
E026	Empower Lab
E035	Class of 1993 Conference Room
E040	Graduate Student and Researchers Offices
E041	Flex Classroom (16-seat)
E042	Experiential Design Classroom
R005	Lactation/Nursing Room



LEVEL 1

E102	Graduate Student Offices
E103-E116	Computer Science Faculty Offices
E106	Conference Room
E114	Reality and Robotics Lab
E115	Theory Lab
E116	Reynolds Family Learning Lab (TEAL / 80-seat)
E127	Conference Room
E117-E132	Thayer Faculty Offices
E127	Conference Room
E133	Conference Room
E134	Graduate Student Office
E135-E146	Biotechnology Labs
E136	Graduate Student Carrels
E143	Biotechnology Teaching Lab
E147	Computational Biology Lab



ROOM KEY	
	Classrooms and conference rooms
	Research and instructional labs
	Faculty and staff offices
	Graduate student and researcher offices
	Services and storage
	Utilities

EMERGENCY KEY	
	Automated External Defibrillator
	Landline telephone
	Safety shower and eyewash
	Safety eyewash

LEVEL 2

E201-E227	Computer Science Faculty Offices
E205	Conference Room
E206A	Visual Computing Lab
E206B	Machine Learning Lab
E214	Security and Trust Lab
E228-E231	Thayer Faculty Offices
E232	Graduate Student Offices
E233-E236	Lord Family Energy Technology Lab Suite
E237	Engles Biotechnology Lab Suite
E238A-E238E	Graduate Student Carrels
E239	Rahul Sarpeshkar Lab



ROOM KEY

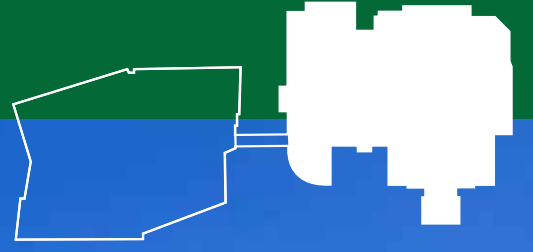
- Classrooms and conference rooms
- Research and instructional labs
- Faculty and staff offices
- Graduate student and researcher offices
- Services and storage
- Utilities

EMERGENCY KEY

- Automated External Defibrillator
- Landline telephone
- Safety shower and eyewash
- Safety eyewash



Cummings Hall & MacLean ESC



BASEMENT	10
GROUND FLOOR	11
FIRST FLOOR	12
SECOND FLOOR	13
THIRD FLOOR	14

Cummings Hall & MacLean ESC

BASEMENT

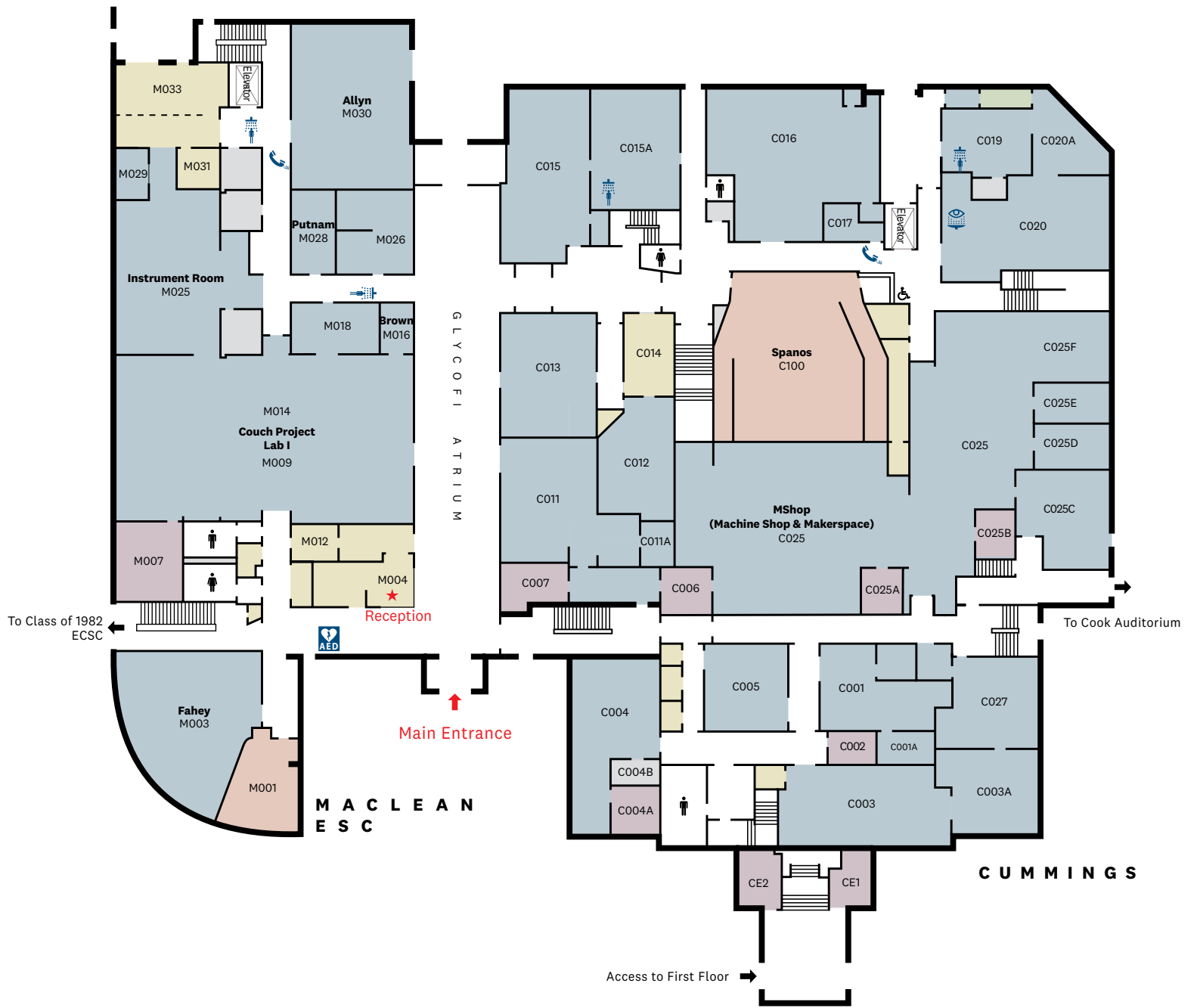
CB01-CB03	John Zhang Lab
CB04	Ice Research Lab
CB11	MShop: Prototype Annex
CB13	Creep Lab
MB01	Zaleski Auditorium
MB02	Yan Li Lab
MB06; MB09	Optics Labs
MB25; MB27	Graduate Student Offices
MB26	Conference Room
MB28	Metallurgy Lab
MB29	Instructional Lab
MB31	Storage Closet
MB32	Crystal Growth Lab
MB34	Metallic Materials Lab



ROOM KEY	
	Classrooms and conference rooms
	Research and instructional labs
	Faculty and staff offices
	Graduate student and researcher offices
	Services and storage
	Utilities
EMERGENCY KEY	
	Automated External Defibrillator
	Landline telephone
	Safety shower and eyewash
	Safety eyewash

GROUND FLOOR

C001	Brain Physiology Lab
C003	Fluids Lab
C004	Power Electronics Lab
C005	MIS Lab
C011	Electronics Projects Lab
C013	Computer-Aided Design (CAD) Lab
C014	Thayer Print and Copy Center
C015	Dartmouth Biomedical Engineering Center (DBEC)
C016	MIS Lab, Bioelectromagnetics Lab
C018-C019	Nanoparticle Core Lab
C020	Biomaterials and Tribology Lab
C025-C028	MShop (Machine Shop and Makerspace)
M001	Conference Room
M003	Fahey Advanced Design Lab
M004	Reception Desk
M009; M014	Couch Project Lab I
M016	Brown Diffractometer Lab
M025	Instrument Room
M026	Materials Processing Lab
M028	Putnam Microscopy Lab
M030	Allyn Large Frame Lab



FIRST FLOOR

C100	Spanos Auditorium
C102	Conference Room
C104	Thayer Finance Office
C105	Classroom
C106-C119	Thayer Faculty and Staff Offices
C117	Graduate Student Carrels
C118	Classroom
C120-C126	Thayer Research Labs
C128-C137	Thayer Faculty and Staff Offices
C135	Graduate Student Lounge
C232	Jackson Conference Room
M101	Conference Room
M103	Thayer Admissions, Financial Aid and Student Affairs
M104	Lunn Graduate Student Office
M106	Graduate Student Carrels
M111	Thayer Faculty Office
M113	Thayer Career Services
M125	Dynamics and Controls Lab
M126	Thayer Computing Services
M132	Classroom
M127; M131; M133-M143	Thayer Faculty and Staff Offices
M134-M134A	Fiona Li Lab

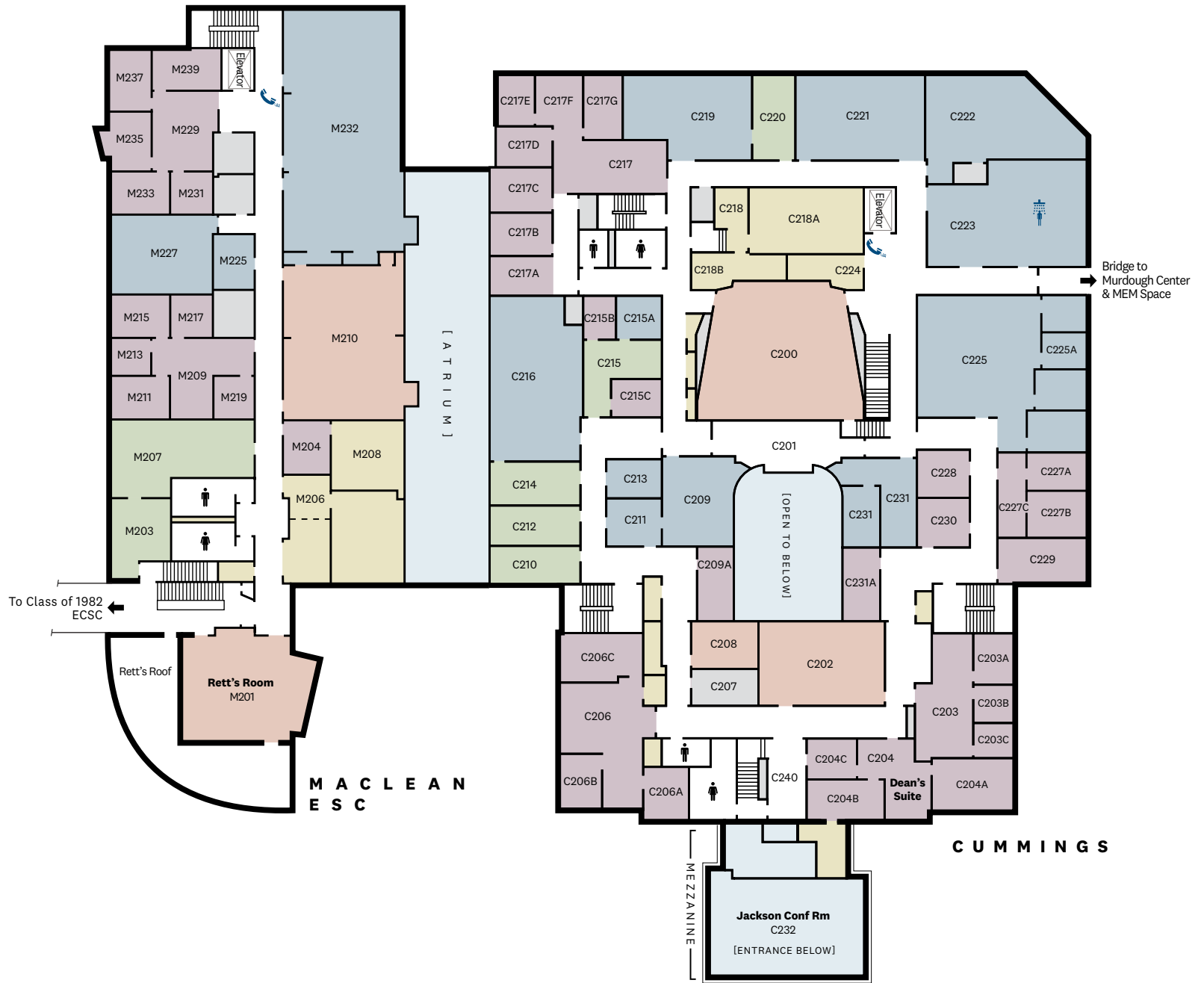
ROOM KEY	
	Classrooms and conference rooms
	Research and instructional labs
	Faculty and staff offices
	Graduate student and researcher offices
	Services and storage
	Utilities

EMERGENCY KEY	
	Automated External Defibrillator
	Landline telephone
	Safety shower and eyewash
	Safety eyewash



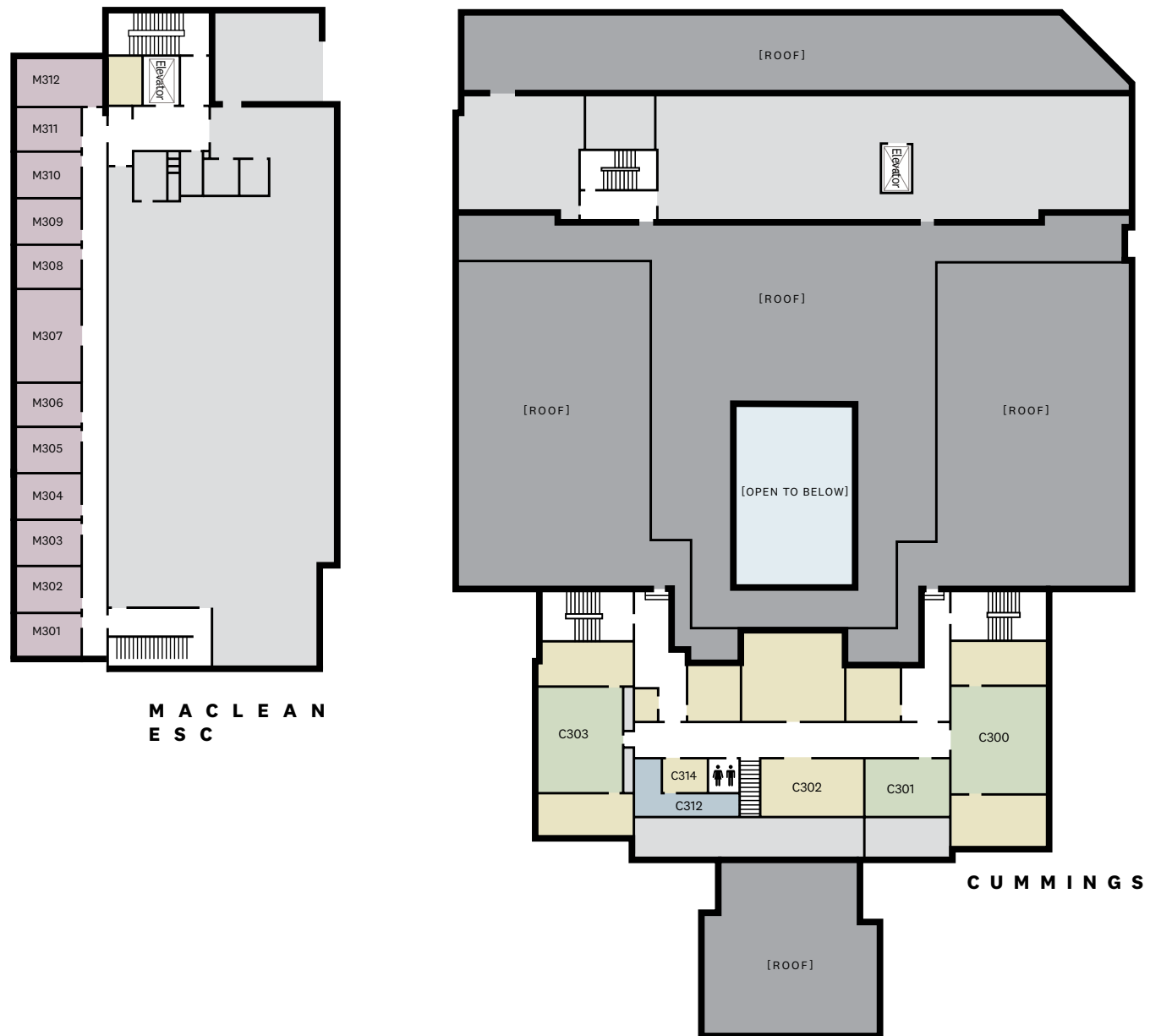
SECOND FLOOR

C200	Auditorium
C202	Classroom
C203	Thayer Faculty and Staff Offices
C204	Thayer Dean's Office Suite
C206	Thayer Advancement Office
C208	Conference Room
C209; C211; C213	LISP Lab
C210; C212-C214; C220	Thayer Faculty and Staff Offices
C215	Graduate Student Office
C216	Analog Lab
C217	Thayer Faculty and Staff Offices
C219	Power and Integrated Electronics Lab
C221	Engineering Systems Lab II
C222	Engineering Systems Lab I
C223	Micro-engineering Lab
C225	Operations Research Group; Wesley Marrero Lab
C227-C230	Thayer Faculty and Staff Offices
C231	Ice and Sea Lab
C232	Jackson Conference Room
M201	Rett's Room
M210	Classroom
M203; M207	Graduate Student Lounge and Carrels
M204; M209; M211-M219	Thayer Faculty and Staff Offices
M229-M239	Thayer Faculty and Staff Offices
M227	Rebecca Jackson Lab
M232	Computer Engineering Lab



THIRD FLOOR

C300; C301; C303	Graduate Student Carrels
M301-M312	Thayer Faculty and Staff Offices



ROOM KEY

- Classrooms and conference rooms
- Research and instructional labs
- Faculty and staff offices
- Graduate student and researcher offices
- Services and storage
- Utilities

EMERGENCY KEY

- Automated External Defibrillator
- Landline telephone
- Safety shower and eyewash
- Safety eyewash