



---

A  
SHADE  
MORE  
EXCLUSIVE

Since 2007, Vermilion has become synonymous for it's food, style and luxurious atmosphere.

Vermilion event spaces have each been designed to accommodate the demands for small to large scale corporate events, and are ideal for a variety of occasions such as conferences, corporate dinners, business network events, charity events, award ceremonies, gala dinners, exhibitions, press and product launches. Vermilion includes a variety of unique spaces, bars/lounges, breakout spaces and a variety of facilities.

—  
The Grand Suite  
The Alan Turing Room  
Abacus Gallery  
Cinnabar  
The Dining Room  
The Maharajah Room

A perfect space for all set ups including cabaret, theatre, boardroom, classroom, state-of-the-art AV and PA system and state-of-the-art bespoke lighting system. This high calibre, audio-visual equipment comprises ceiling HD projectors with large screens, a grid of hooks for installing extra lighting, sound rigs, a stage and high-tech microphone system.

—  
All spaces are fully accessible and include free WiFi  
300 free car park spaces and coach facilities  
24 hour security on the premises



OUR THREE-STOREY  
LABYRINTH  
INCLUDES SIX  
UNIQUE SPACES

—  
THE GRAND SUITE  
THE ALAN TURING ROOM  
ABACUS GALLERY  
CINNABAR  
THE DINING ROOM  
THE MAHARAJA ROOM

---

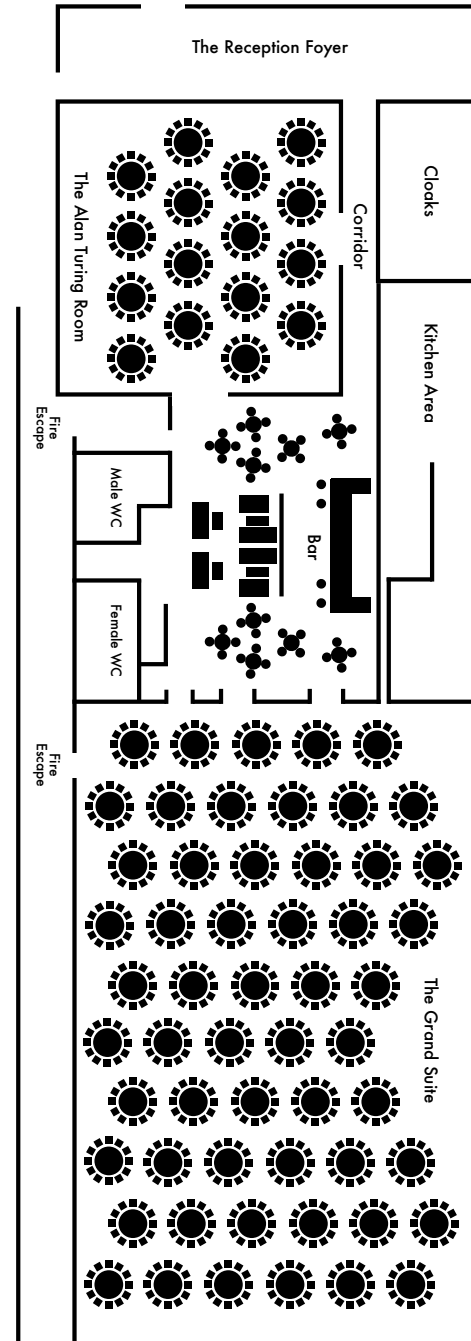
## OUR SPACES

ALL ROOMS ARE FULLY  
ACCESSIBLE

—  
300 FREE CAR PARK

—  
COACH FACILITIES

—  
24 HOUR SECURITY ON THE  
PREMISES



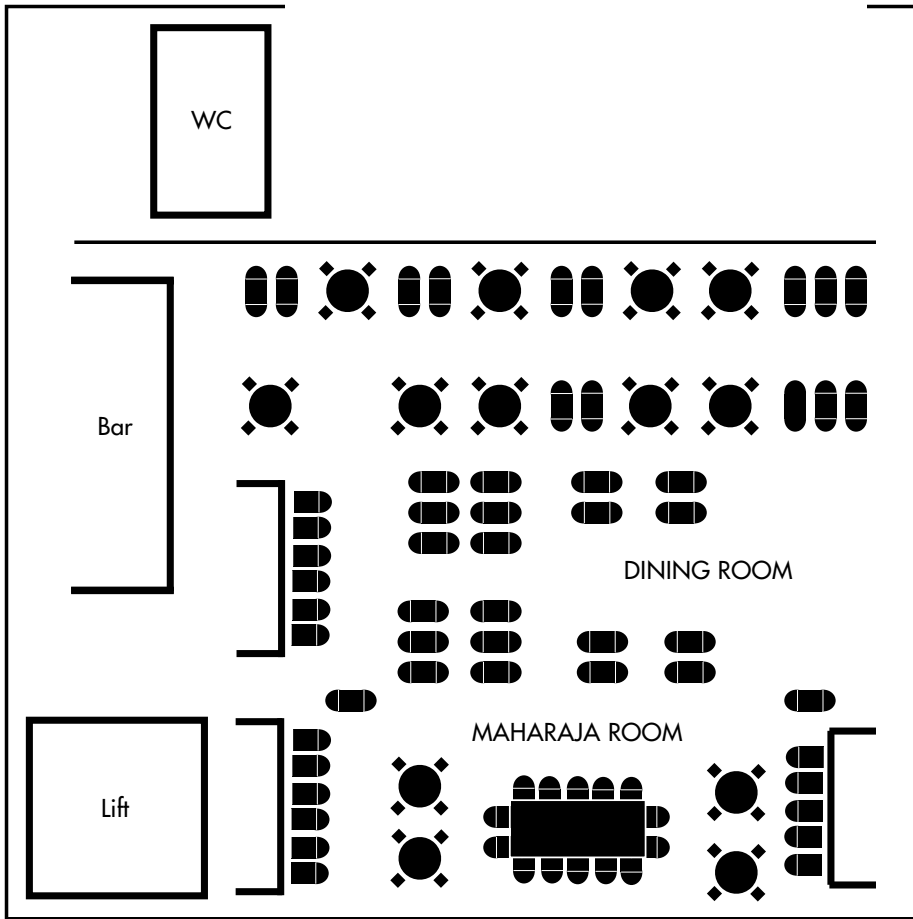
GROUND FLOOR

Comprising:

THE GRAND SUITE  
Capacity 800

THE ALAN TURING ROOM  
Capacity 200

—  
CAPACITY  
TOTALING  
1000



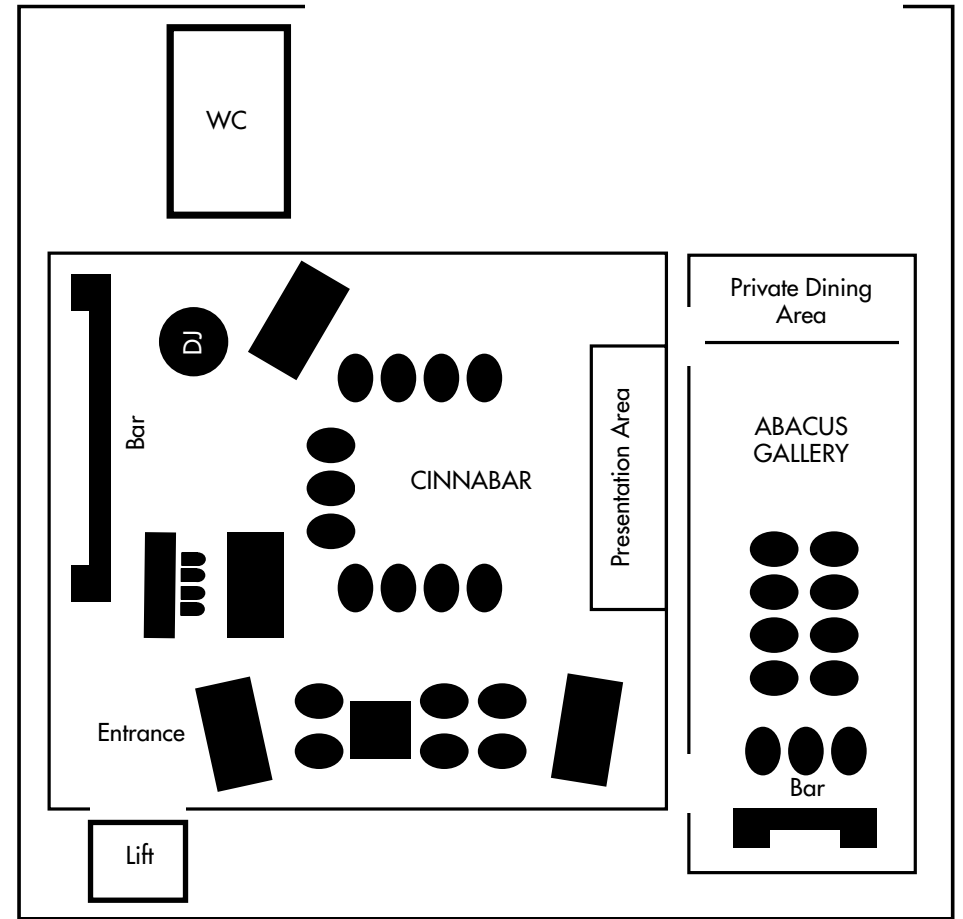
FIRST FLOOR

Comprising:

THE DINING ROOM  
Capacity 200

THE MAHARAJA ROOM  
Capacity 18

—  
CAPACITY  
TOTALING  
218



SECOND FLOOR

Comprising:

THE ABACUS GALLERY  
Capacity 100

CINNABAR COCKTAIL LOUNGE  
Capacity 200

—  
CAPACITY  
TOTALING  
300

THE  
**GROUND**  
FLOOR

OUR GROUND FLOOR OFFERS AN IMPRESSIVE WELCOME AREA, BAR LOUNGE AND TWO BEAUTIFUL ARCHITECTURALLY DESIGNED SPACES; BOASTING A MIX OF BESPOKE MODERN AND ANTIQUE FURNISHINGS, SOURCED FROM AROUND THE WORLD





THE  
**GRAND**  
SUITE

This expansive, open suite has no pillars and features double-height ceilings, elegant chandeliers, bespoke designed carpeting, personalised lighting, a green room / bridal suite, prayer rooms, a twin bar lounge with LCD monitor, and a self contained fully equipped kitchen.

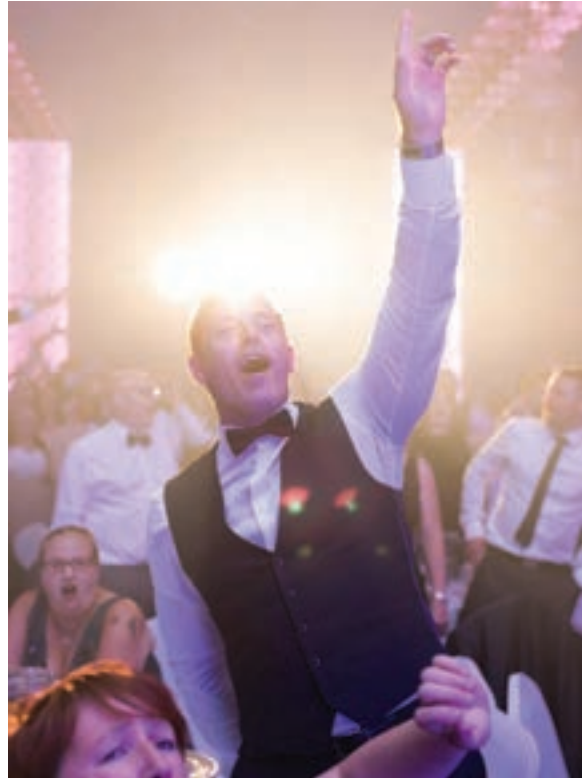
The Grand Suite audio infrastructure was created by the designers of Manchester's Albert Hall. This high calibre, audio-visual equipment comprises ceiling HD projectors with large screens, a grid of hooks for installing extra lighting, sound rigs, a stage and high-tech microphone system.

The suite also provides designated easy access for third party suppliers.

Ground Floor - 848m<sup>2</sup>  
Height - 5.6m

Capacity  
Theatre 1500  
Classroom 400  
Cabaret 450  
Banqueting 800





“Our work colleagues thoroughly enjoyed the beautiful setting, the delicious food and the great service that you and your team provided. We received glowing feedback from our guests and we couldn't be happier.”

Mrs Ahmad





“Massive thank you to you and the team for Friday – they were absolutely amazing. I love that you have dedicated bar and catering managers, and plenty of staff to glass collect and serve food and drink”

Faye Smallwood (Make Events)  
Gala Dinner



GROUND FLOOR

---

ALAN  
**TURING**  
ROOM

Built in 2017, this modern event space, offers greater versatility, with natural light, a full integrated audio and visual system, including a microphone system, bespoke lighting system, HD projector and screen.

This modern event space also benefits from hosting it's own twinned bar lounge.

Perfect for conferences, networking events, meetings, Christmas parties, gala dinners, lectures and classes.

Ground floor - 267m<sup>2</sup>  
Height - 2.5m

Capacity  
350 Theatre  
95 Cabaret  
200 Banqueting  
80 Classroom  
30 Boardroom



“ The Honourable Justice Sir Gerard Barling and The Honourable Justice Dame Geraldine Andrews absolutely loved the ambience, the food and the attention to detail. It was perfect and the feedback from our VIP guests throughout the evening was nothing but praise ”

Dr Robina Shah MBE JP DL FRCGP (HONs)  
High Sheriff of Greater Manchester



THE  
**FIRST**  
FLOOR

OUR FIRST FLOOR HOSTS OUR  
RENOWNED FUSION DINING  
ROOM, MAHARAJA TABLE  
AND LIVELY COCKTAIL BAR.  
MODERN VERSATILE SPACES,  
MANAGED BY A TEAM OF  
PROFESSIONALS WITH VAST  
EXPERIENCE FROM 5 STAR  
HOTELS AND RESTAURANTS  
AROUND THE GLOBE





FIRST FLOOR

---

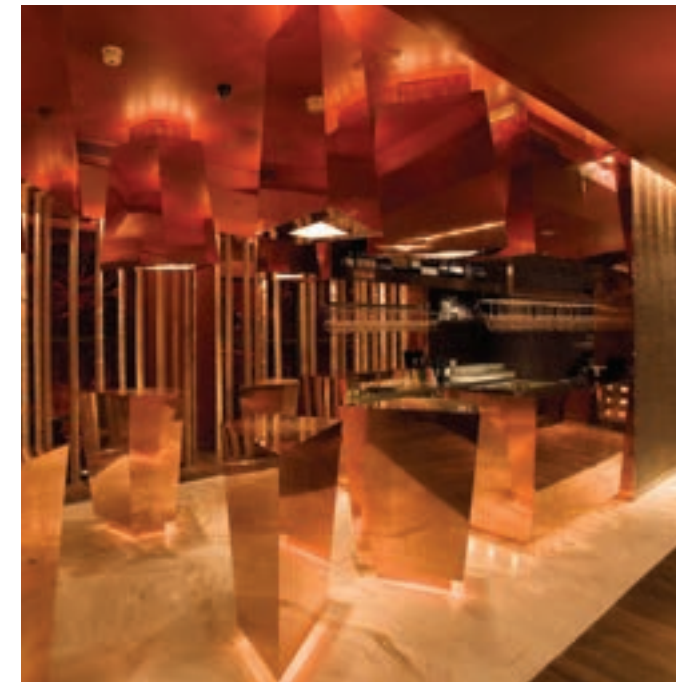
THE  
**DINING**  
ROOM

The Dining Room serves an eclectic mix of Asian Fusion cuisine, specialising in Thai, Seafood and Indian cuisine.

In this opulent room, one is immediately submerged into an enchanting Eastern atmosphere complete with Asian antiques and opulent architecture.

The Dining Room can be hired subject to availability.

Capacity 200



“We had an amazing event, everyone had a wonderful time and we’ve had a lot of positive comments from our employees!”

Susannah Chuter (Radius)  
Gala Dinner

FIRST FLOOR

---

THE  
**MAHARAJA**  
ROOM

Enclosed within this grid partitioned room, is a beautiful, handmade circular table with its rotating centre. This stunning ornate table plays host to the finest cuisine and private dining.

Ideal for intimate dining.

Capacity 18









THE  
SECOND  
FLOOR

OUR SECOND FLOOR IS A CASUAL MIX OF BAR AND DINING SUITE, IDEAL FOR EVENTS THAT REQUIRE A CHIC TOUCH. THE ABACUS GALLERY IS A SELF CONTAINED CATERING SUITE WITH ITS OWN BAR AND AUDIO/VISUAL SYSTEM





THE  
**ABACUS**  
GALLERY

The Abacus Gallery continues the Eastern elegance of Vermilion's design, with a feature wall decorated with Abacuses, a luxury hardwood floor and soft lighting.

Ground floor 130m<sup>2</sup>  
Height 2.8m

Capacity  
Theatre 130  
Cabaret 50  
Banqueting 100  
Boardroom 20

“Great food, drinks, service and your management was flawless. All our guests, including some high profile guests who gave many compliments on the event and general ambience ”

Mr and Mrs Oza



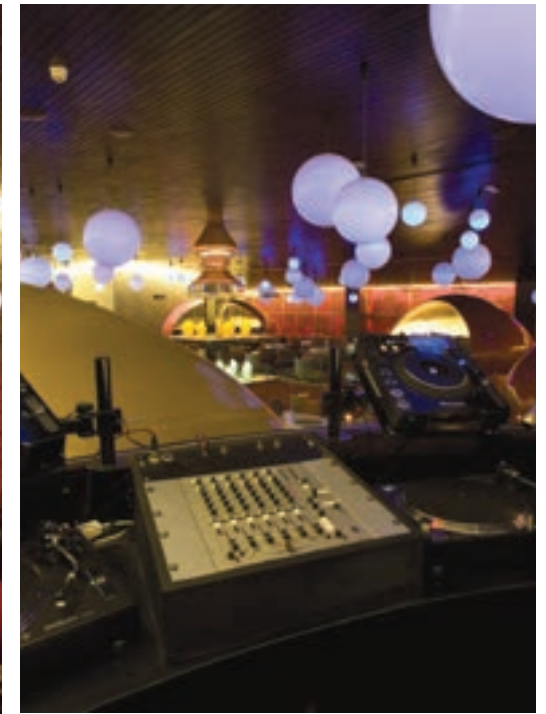
THE  
**CINNABAR**  
LOUNGE

Cinnabar is ideal for events that require a chic touch, from drink receptions to networking events and after parties.

Cinnabar is available for hire subject to availability.

Capacity  
200 seating / 500 standing  
Late License





“Vermilion was a great location for our event. The team was flexible and proactive. Nothing was too much trouble and every idea we had was met with enthusiasm and solutions as to how they could accommodate. Space also offered a multidimensional experience for our guests”

Megan Joanne Grant (Top Banana)  
Awards Ceremony Gala Dinner



---

## EVENTS BANQUETING CONFERENCES

For enquiries and more  
information please contact  
our Events Team on:  
[sales@vermilion.uk.com](mailto:sales@vermilion.uk.com)  
0161 202 8747

Hulme Hall Lane  
Lord North Street  
Sport City  
Manchester  
M40 8AD

Twitter @vermilionuk  
Facebook @vermilionuk  
Instagram @vermilion.uk

[www.vermilion.uk.com](http://www.vermilion.uk.com)

